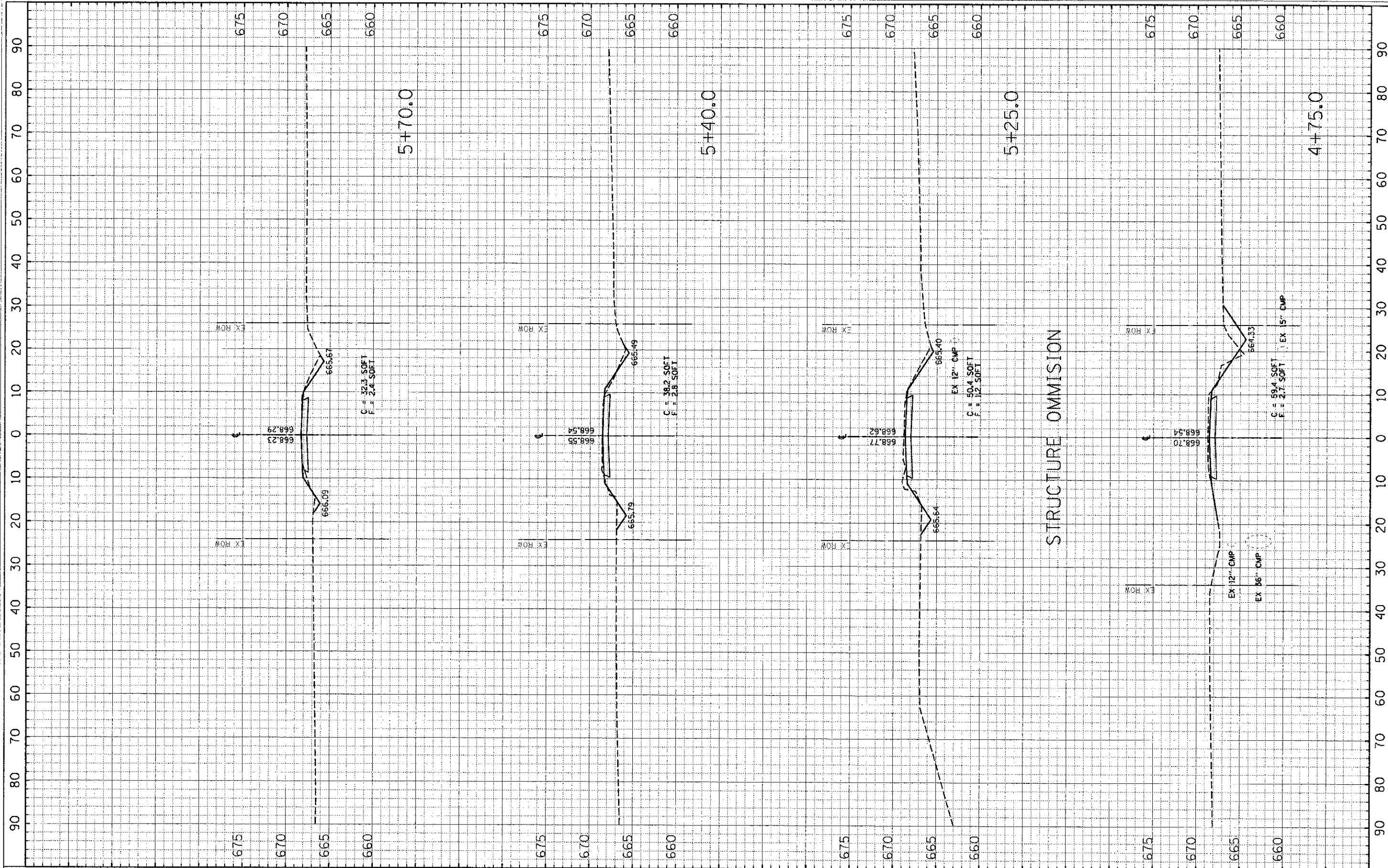


PRINTED DATE: 07/11/2012
 C:\ESICONSULT\PROJECTS\TR 92.XS.dwg



ESI ESI CONSULTANTS, LTD
 731 WINDSOR ROAD
 CARLESTON, IL 61920
 (217) 398-1910
 WWW.ESI-CONSULTANTS.LTD.COM
 ILLINOIS DEPARTMENT OF PROFESSIONAL REGULATION REGISTRATION #184-003025

VERMILION COUNTY
 2732 Batectown Road
 Oakwood, IL 61858
 (217) 431-8882 Ext. 101

NO	DATE	DESCRIPTION OF REVISIONS	NO	DATE	DESCRIPTION OF REVISIONS

ESI PROJECT NO: 11-405
 FILE: 13_TR 92.XS
 DATE: 05-17-2012
 ENGR: ADG
 DRAWN BY: ADG
 QC/QA:

TR 92 OVER JORDAN CREEK
05-09118-00-BR
 JAMAICA TOWNSHIP - VERMILION COUNTY

CROSS SECTIONS
 STA 4+75.0 TO STA 5+70.0
 SHEET 2 OF 3
 SHEET NUMBER **14** OF 15