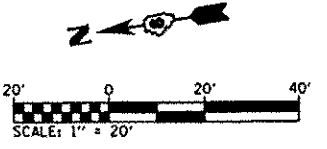
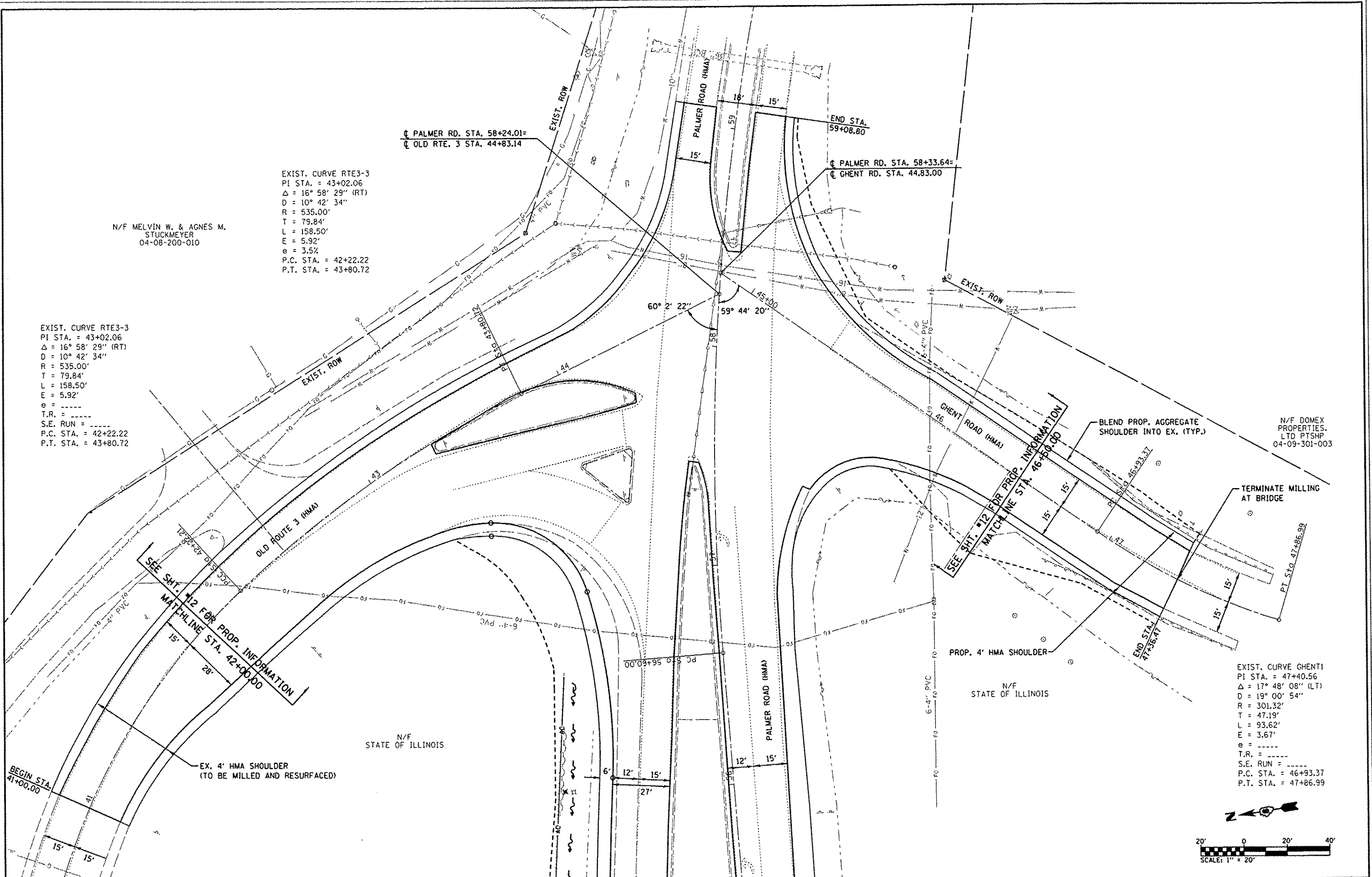


N/F MELVIN W. & AGNES M. STUCKMEYER
04-08-200-010

EXIST. CURVE RTE3-3
PI STA. = 43+02.06
 $\Delta = 16^\circ 58' 29''$ (RT)
D = 10° 42' 34"
R = 535.00'
T = 79.84'
L = 158.50'
E = 5.92'
e = 3.5%
P.C. STA. = 42+22.22
P.T. STA. = 43+80.72

EXIST. CURVE RTE3-3
PI STA. = 43+02.06
 $\Delta = 16^\circ 58' 29''$ (RT)
D = 10° 42' 34"
R = 535.00'
T = 79.84'
L = 158.50'
E = 5.92'
e = 3.5%
P.C. STA. = 42+22.22
P.T. STA. = 43+80.72

EXIST. CURVE GHENT1
PI STA. = 47+40.56
 $\Delta = 17^\circ 48' 08''$ (LT)
D = 19° 00' 54"
R = 301.32'
T = 47.19'
L = 93.62'
E = 3.67'
e = 3.5%
P.C. STA. = 46+93.37
P.T. STA. = 47+86.99



FILE NAME = 0810006-sh1-plan.dgn	USER NAME = default PLOT TIME = 1:54:27 PM PLOT SCALE = 40.0000 / IN. PLOT DATE = 7/18/2012	DESIGNED - DRAWN - CHECKED - DATE -	REVISED - REVISED - REVISED - REVISED -	STATE OF ILLINOIS DEPARTMENT OF TRANSPORTATION		PLAN SHEET		F.A.U. RTE. 9300	SECTION 10-00048-01-PV	COUNTY MONROE	TOTAL SHEETS 33	SHEET NO. 13
				SCALE: 1"=20'		SHEET 03 OF 03 SHEETS STA. TO STA.		CONTRACT NO. 97505 ILLINOIS FED. AID PROJECT				