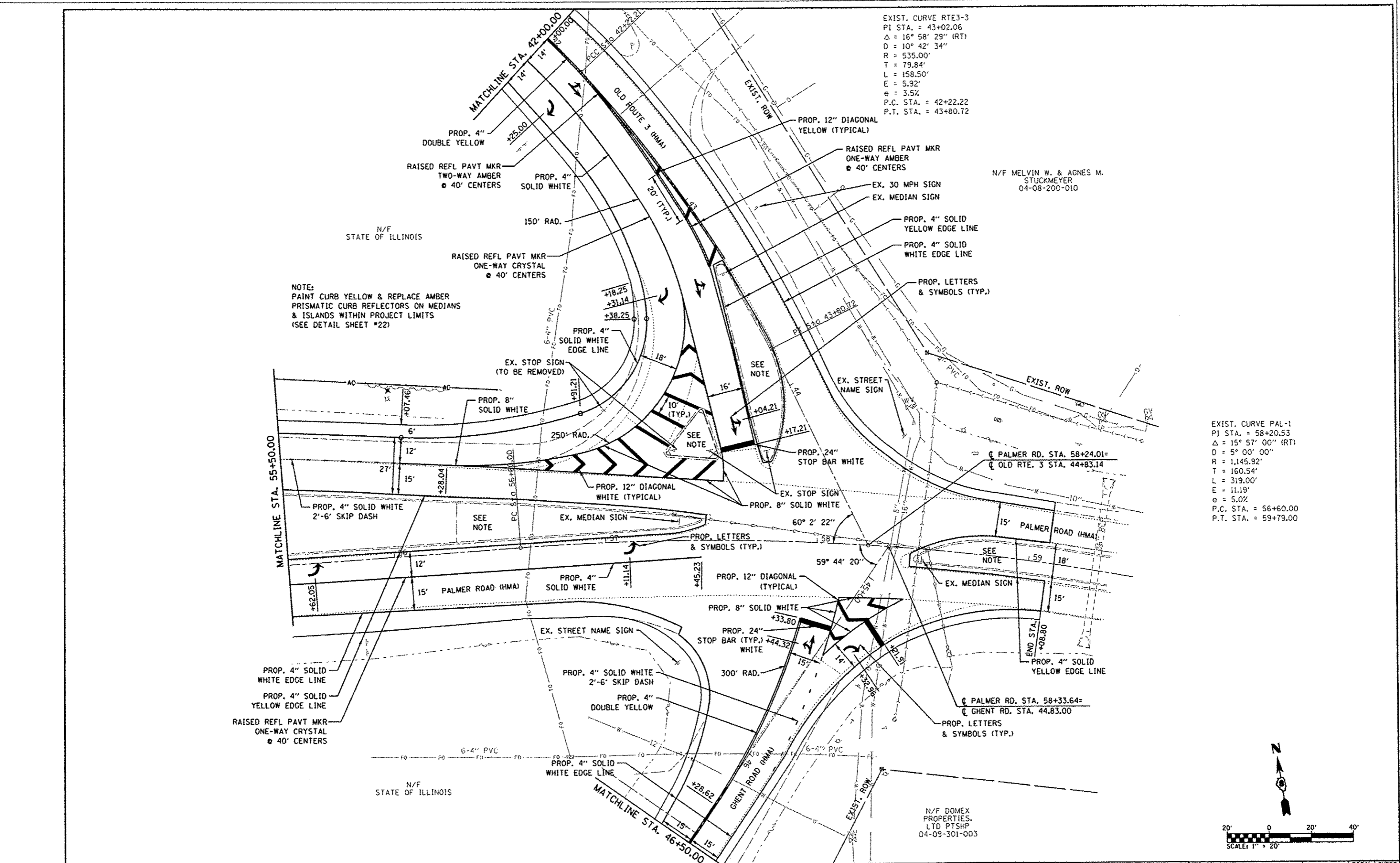


EXIST. CURVE RTE3-3  
 PI STA. = 43+02.06  
 $\Delta = 16^\circ 58' 29''$  (RT)  
 $D = 10^\circ 42' 34''$   
 $R = 535.00'$   
 $T = 79.84'$   
 $L = 158.50'$   
 $E = 5.92'$   
 $e = 3.5\%$   
 P.C. STA. = 42+22.22  
 P.T. STA. = 43+80.72

N/F MELVIN W. & AGNES M.  
 STUCKMEYER  
 04-08-200-010

EXIST. CURVE PAL-1  
 PI STA. = 58+20.53  
 $\Delta = 15^\circ 57' 00''$  (RT)  
 $D = 5^\circ 00' 00''$   
 $R = 1,145.92'$   
 $T = 160.54'$   
 $L = 319.00'$   
 $E = 11.19'$   
 $e = 5.0\%$   
 P.C. STA. = 56+60.00  
 P.T. STA. = 59+79.00

NOTE:  
 PAINT CURB YELLOW & REPLACE AMBER  
 PRISMATIC CURB REFLECTORS ON MEDIANS  
 & ISLANDS WITHIN PROJECT LIMITS  
 (SEE DETAIL SHEET #22)



FILE NAME =	0810006-shr-pmk.dgn
USER NAME =	default
PLOT TIME =	9/22/23 AM
PLOT SCALE =	40,0000' / IN.
PLOT DATE =	7/19/2012

DESIGNED -	REVISD -
DRAWN -	REVISD -
CHECKED -	REVISD -
DATE -	REVISD -

**STATE OF ILLINOIS  
 DEPARTMENT OF TRANSPORTATION**

**PAVEMENT MARKING & SIGNING PLAN**

SCALE: 1"=20' SHEET 02 OF 03 SHEETS STA. 55+50.00 TO STA. 59+08.80

F.A.J. RTE.	SECTION	COUNTY	TOTAL SHEETS	SHEET NO.
9300	10-00048-01-PV	MONROE	33	20
CONTRACT NO. 97505				
ILLINOIS FED. AID PROJECT				