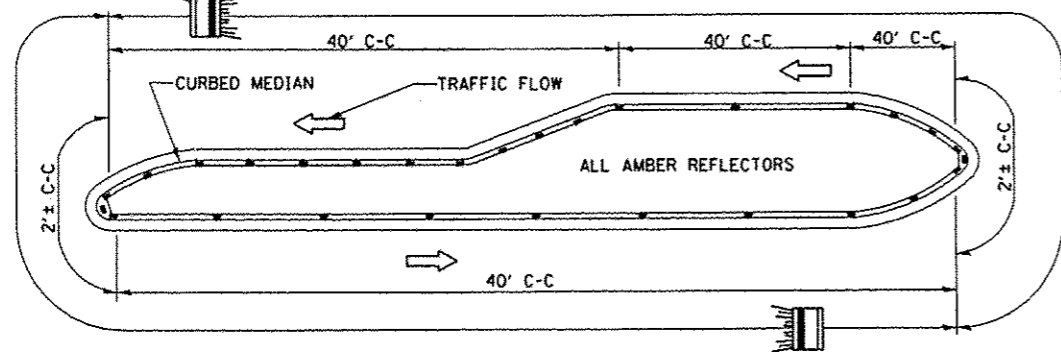
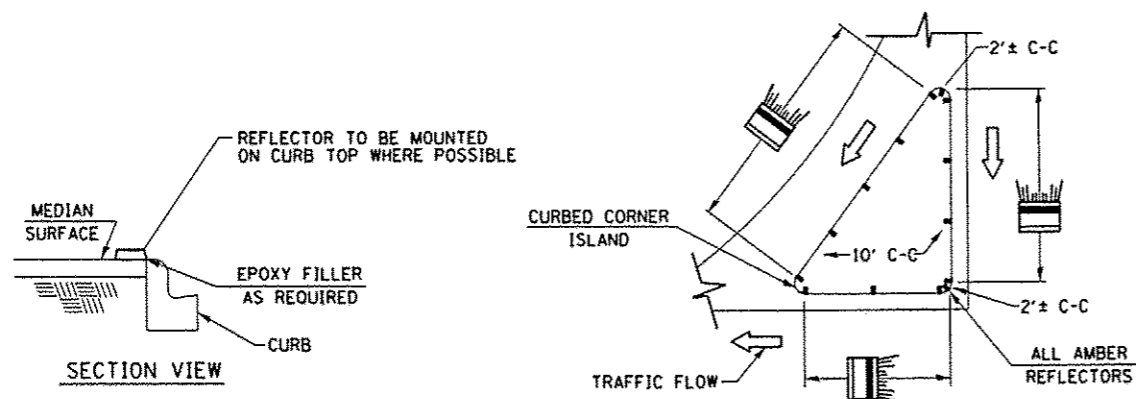


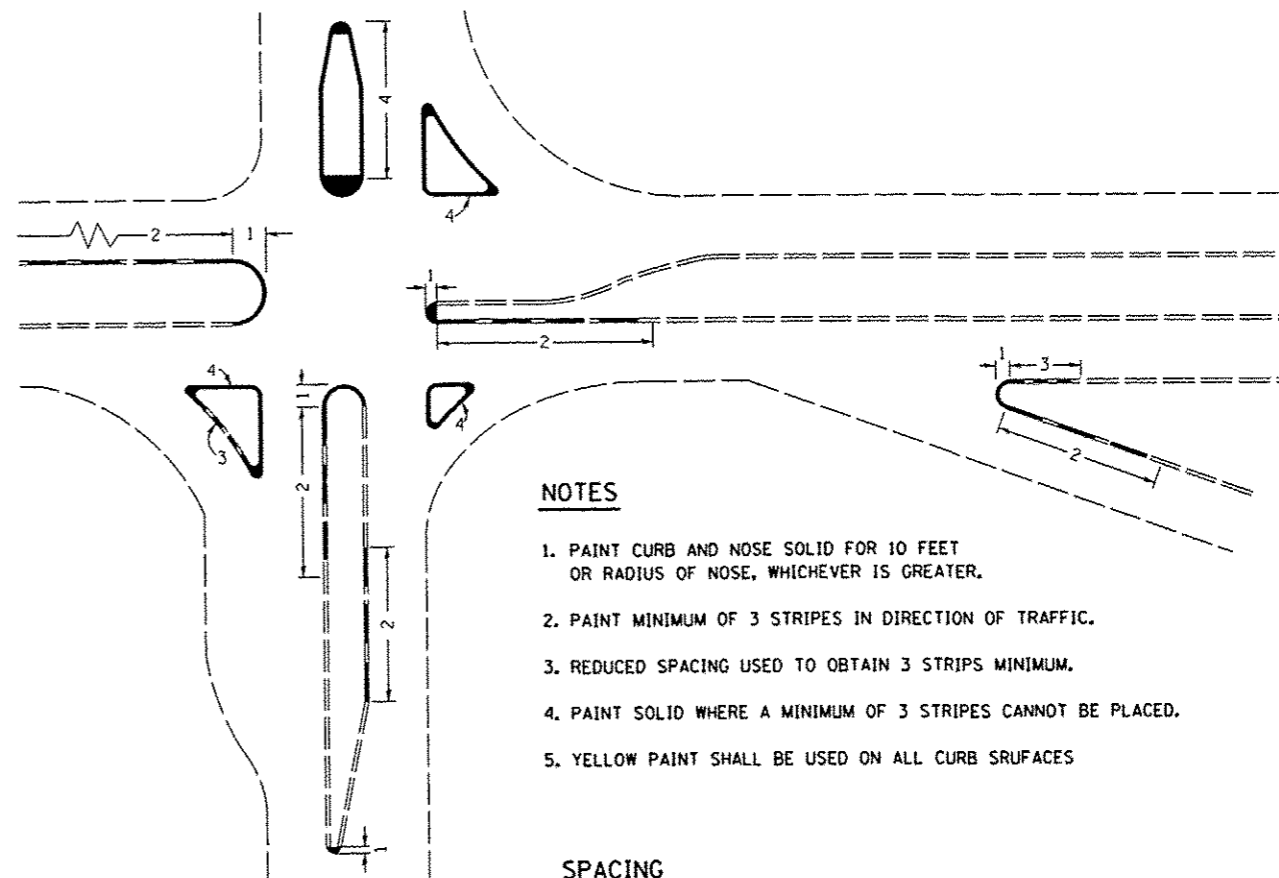
MARKER ORIENTATION
WITHIN LIMITS SHOWN



- NOTES**
1. PRISMATIC REFLECTORS SHALL BE MONO-DIRECTIONAL AND POSITIONED SO THAT THE REFLECTIVE FACE IS FACING THE APPROACHING TRAFFIC.
 2. PRISMATIC REFLECTORS SHALL BE SECURED IN PLACE WITH AN EPOXY ADHESIVE.
 3. PRISMATIC REFLECTORS SHALL BE EITHER AMBER OR CRYSTAL IN COLOR.



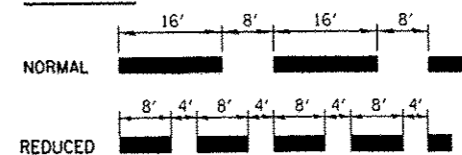
TYPICAL PLACEMENT OF PRISMATIC REFLECTORS ON CURBS
(NO SCALE)



NOTES

1. PAINT CURB AND NOSE SOLID FOR 10 FEET OR RADIUS OF NOSE, WHICHEVER IS GREATER.
2. PAINT MINIMUM OF 3 STRIPES IN DIRECTION OF TRAFFIC.
3. REDUCED SPACING USED TO OBTAIN 3 STRIPS MINIMUM.
4. PAINT SOLID WHERE A MINIMUM OF 3 STRIPES CANNOT BE PLACED.
5. YELLOW PAINT SHALL BE USED ON ALL CURB SURFACES

SPACING



TYPICAL CURB MARKING

FILE NAME = 0810006-shd-details.dgn	USER NAME = default	DESIGNED -	REVISED -
	PLOT TIME = 1:50:37 PM	DRAWN -	REVISED -
	PLOT SCALE = 40.0000' / IN.	CHECKED -	REVISED -
	PLOT DATE = 7/18/2012	DATE -	REVISED -

STATE OF ILLINOIS
DEPARTMENT OF TRANSPORTATION

TYPICAL PLACEMENT OF PRISMATIC REFLECTORS ON CURBS & CURB MARKING DETAIL

SCALE: SHEET 01 OF 01 SHEETS STA. TO STA.

F.A.U. RTE.	SECTION	COUNTY	TOTAL SHEETS	SHEET NO.
9300	10-00048-01-PV	MONROE	33	22
				CONTRACT NO. 97505
ILLINOIS FED. AID PROJECT				