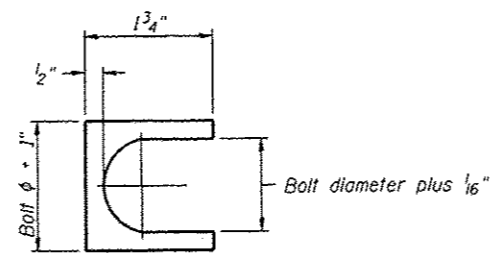
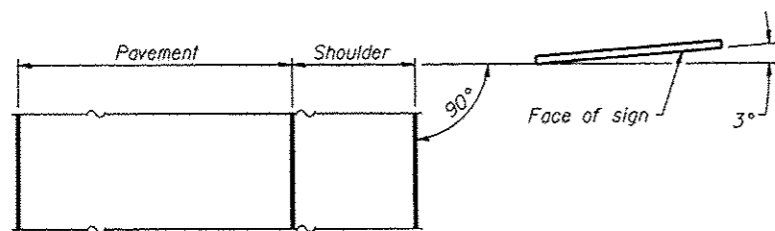


**ELEVATION**

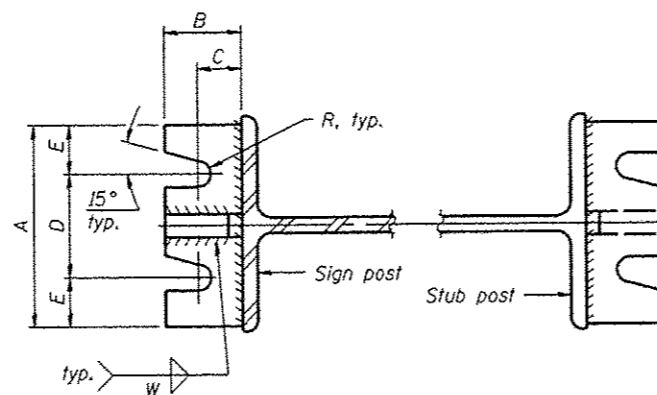


**SHIM DETAIL**

Furnish two 0.01" thick and two 0.03" thick stainless steel or brass (ASTM B36) shims per post.



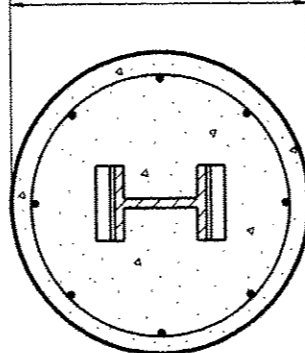
**LOCATION SKETCH**



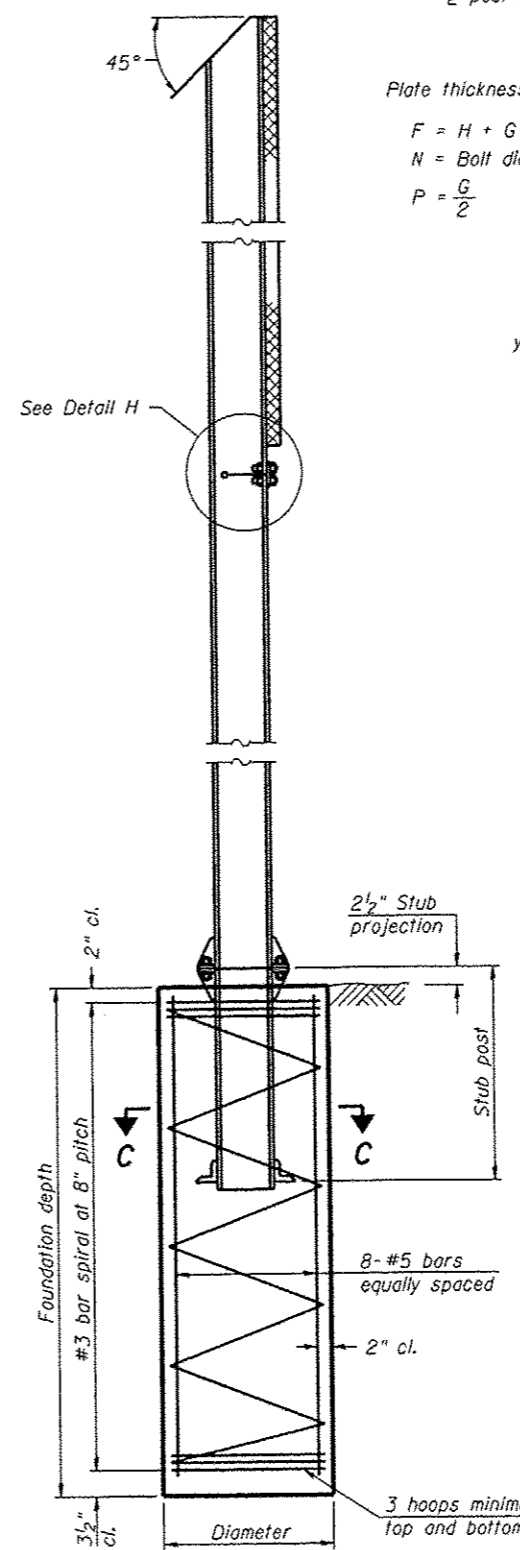
**SECTION A-A**

**SECTION B-B**

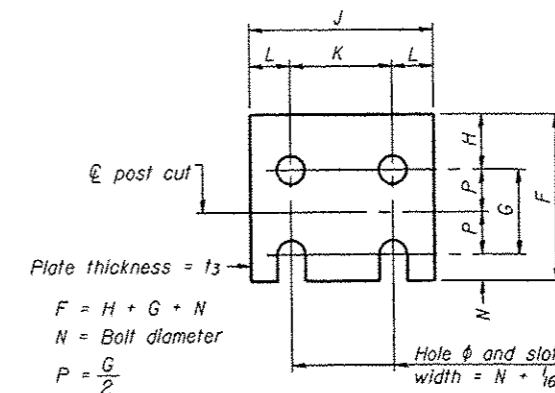
(See table for dimensions.)



**SECTION C-C**



**SECTION D-D**



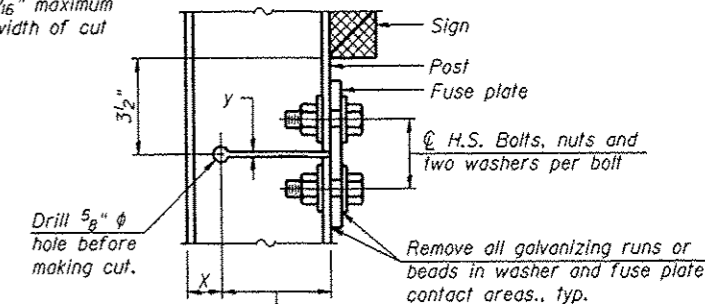
**FUSE PLATE DETAIL**

(Install with notches down.)

Plate thickness =  $t_3$   
 $F = H + G + N$   
 $N = \text{Bolt diameter}$   
 $P = \frac{G}{2}$

FUSE PLATE DATA		
N = Bolt Diameter	G	H
1/2"	2"	1 3/8"
5/8"	2 1/4"	1 1/4"
3/4"	2 1/2"	1 3/8"
7/8"	2 3/4"	1 1/2"
1"	3"	1 5/8"
1 1/8"	3 1/4"	1 3/4"
1 1/4"	3 1/2"	1 7/8"

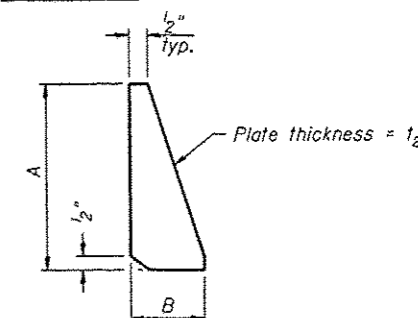
$y = \frac{3}{16}$ " maximum width of cut



**DETAIL H**

$X = \text{flange and fillet depth plus } \frac{3}{8}$ "

Flame cut slot in web and saw cut flange



**STIFFENER PLATE DETAIL**

**GENERAL NOTES**

Posts shall be plumbed by using shims with post-to-stub post connection bolts snug tight only. Final tightening of all High Strength Bolts shall be in accordance with Article 727.05 and threads at the junction of the bolt and nut shall be burred or center punched to prevent the nut from loosening.

LOADING: 80 m.p.h. wind with 30% gust factor, normal to sign.

DESIGN STRESSES:  
 Structural steel - 20,000 p.s.i.  
 Reinforcing steel - 20,000 p.s.i.  
 Concrete - 1,400 p.s.i.  
 Footing soil pressure - 2,000 p.s.f.

After fabrication, the post, fuse plate and upper 6", min. of the stub post shall be hot-dip galvanized in accordance with AASHTO M111. All bolts, nuts and washers shall be hot-dip galvanized in accordance with AASHTO M232.

Work this sheet with Base Sheet BAW-A-2.

(Sheet 1 of 2)

BAW-A-1

6-1-12

FILE NAME :	USER NAME :	DESIGNED -	REVISED
		CHECKED -	REVISED
		DRAWN -	REVISED
		CHECKED -	REVISED

STATE OF ILLINOIS  
 DEPARTMENT OF TRANSPORTATION

BREAK-AWAY WIDE FLANGE  
 STEEL SIGN POST DETAILS

SHEET NO. 01 OF 02 SHEETS

F.A.U. RTE.	SECTION	COUNTY	TOTAL SHEETS	SHEET NO.
9300	10-00048-01-PV	MONROE	33	23
				CONTRACT NO. 97505
ILLINOIS FED. AID PROJECT				