

F.A. RTE.	SECTION	COUNTY	TOTAL SHEETS	SHEET NO.
HWY 37 & COLLINS	10-00004-00-SW	JOHNSON	15	1

STATE OF ILLINOIS DEPARTMENT OF TRANSPORTATION DIVISION OF HIGHWAYS PLANS FOR SAFE ROUTES TO SCHOOLS SIDEWALK IMPROVEMENTS

CENTRAL BUREAU OF
LOCAL ROADS & STREETS
2012 JUL 11 A 10:09

VILLAGE OF GOREVILLE - VARIOUS LOCATIONS
SECTION NO. 10-00004-00-SW
PROJECT NO. SRTS-4009(032)
JOB NO. C-40-110-09
CONTRACT NO. 99447
JOHNSON COUNTY

LENGTH OF PROJECT 820.54 FEET (0.1554 MILES)

SHEET LAYOUT

- 1 COVER SHEET
- 2 NOTES & QUANTITIES
- 3-10 PLAN SHEETS
- 11-12 SIDEWALK PROFILE
- 13-14 SIDEWALK DETAIL
- 15. SIDEWALK SECTIONS

STANDARDS

- 280001-05-TEMPORARY EROSION CONTROL SYSTEMS
- 424001-05-CURB RAMP FOR SIDEWALKS
- 424001-06-PERPENDICULAR CURB RAMP FOR SIDEWALKS
- 701301-01-LANE CLOSURE, 2L, 2W, SHORT TIME OPERATIONS
- 720006-02-SIGN PANEL ERECTION DETAILS
- 729001-01-APPLICATION OF TYPES A & B METAL POST
- 780001-02-TYPICAL PAVEMENT MARKINGS

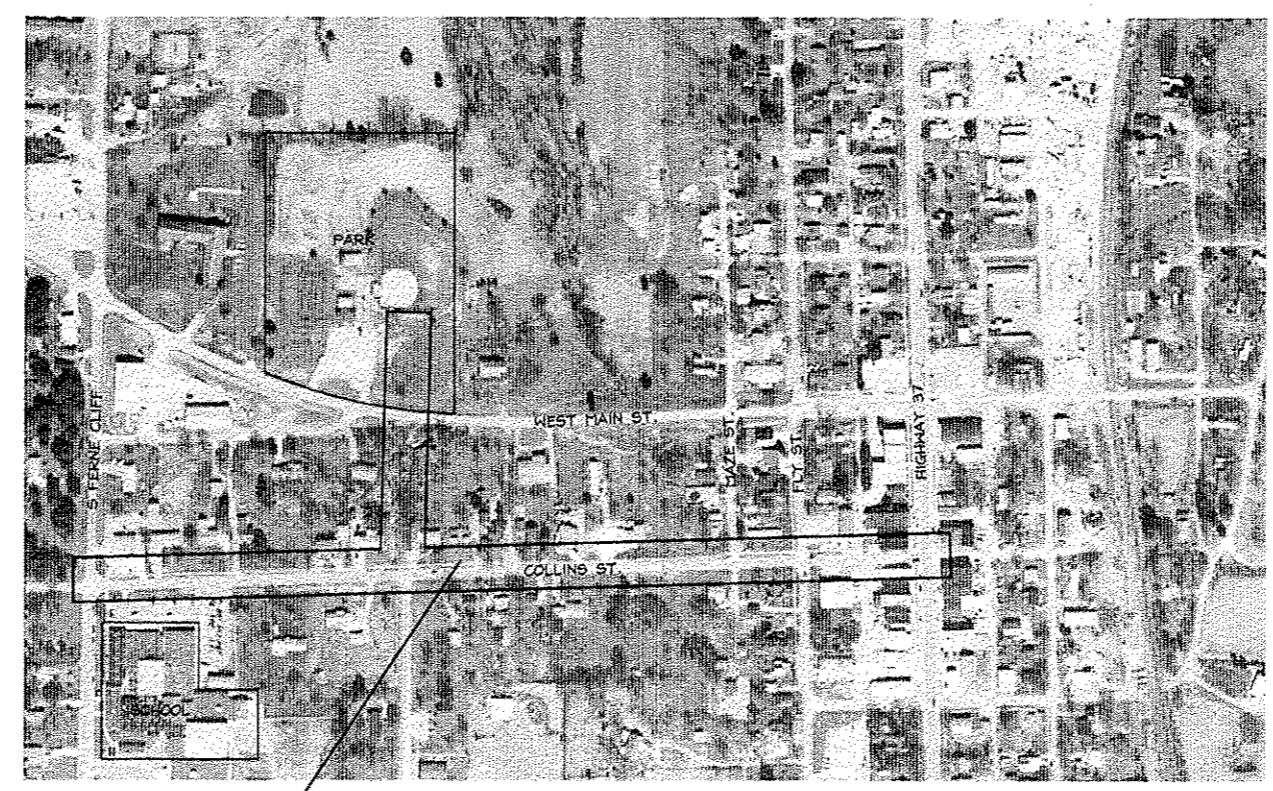
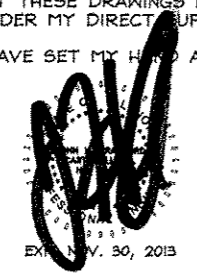
ENGINEER AND SURVEYOR'S CERTIFICATE

STATE OF ILLINOIS)
COUNTY OF WILLIAMSON)

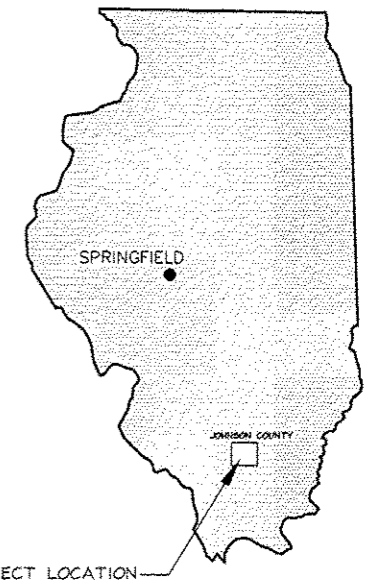
I, JOHN H. CRAWFORD, ILLINOIS PROFESSIONAL ENGINEER NO. 29206 AND ILLINOIS PROFESSIONAL LAND SURVEYOR NO. 2061 DO HEREBY CERTIFY THAT THESE DRAWINGS WERE PREPARED BY ME, OR PREPARED UNDER MY DIRECT SUPERVISION.

IN WITNESS WHEREOF, I HAVE SET MY HAND AND SEAL THIS 29TH DAY OF MAY 2012.

JOHN H. CRAWFORD
I.P.E. NO. 29206
I.P.L.S. NO. 2061
CARTERVILLE, ILLINOIS



PROJECT LOCATION PROJECT AREA MAP



Approved 6/26, 2012
[Signature]
PRESIDENT, VILLAGE OF GOREVILLE

Passed JULY 9, 2012
[Signature]
District 9 Engineer of Local Roads and Streets

Releasing for Bid
Based on Limited
Review 7/9, 2012
[Signature]
Deputy Director of Highways, Region 5 Engineer

NO.	DESCRIPTION	BY	DATE	NO.	DESCRIPTION	BY	DATE
					DESIGNED		
					DRAWN	WDS	3/27/12
					CHECKED	JHC	3/27/12

VILLAGE OF GOREVILLE
JOHNSON COUNTY, IL
SAFE ROUTES TO SCHOOL
COVER PAGE

JOHN H. CRAWFORD & ASSOCIATES, P.C.
CIVIL ENGINEERS, LAND SURVEYORS
201 SOUTH DIVISION STREET, CARTERVILLE, ILLINOIS 62910
PHONE (618) 985-6370 FAX (618) 985-4592
PROFESSIONAL DESIGN FIRM # 184-002855

SHEET NO.	
1	
ISSUE	DATE
A	5/29/12

APPENDIX P - SIDEWALKS TO SCHOOLS SIDEWALKS 2012-05-29 10:11:24 AM