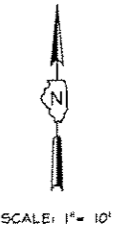
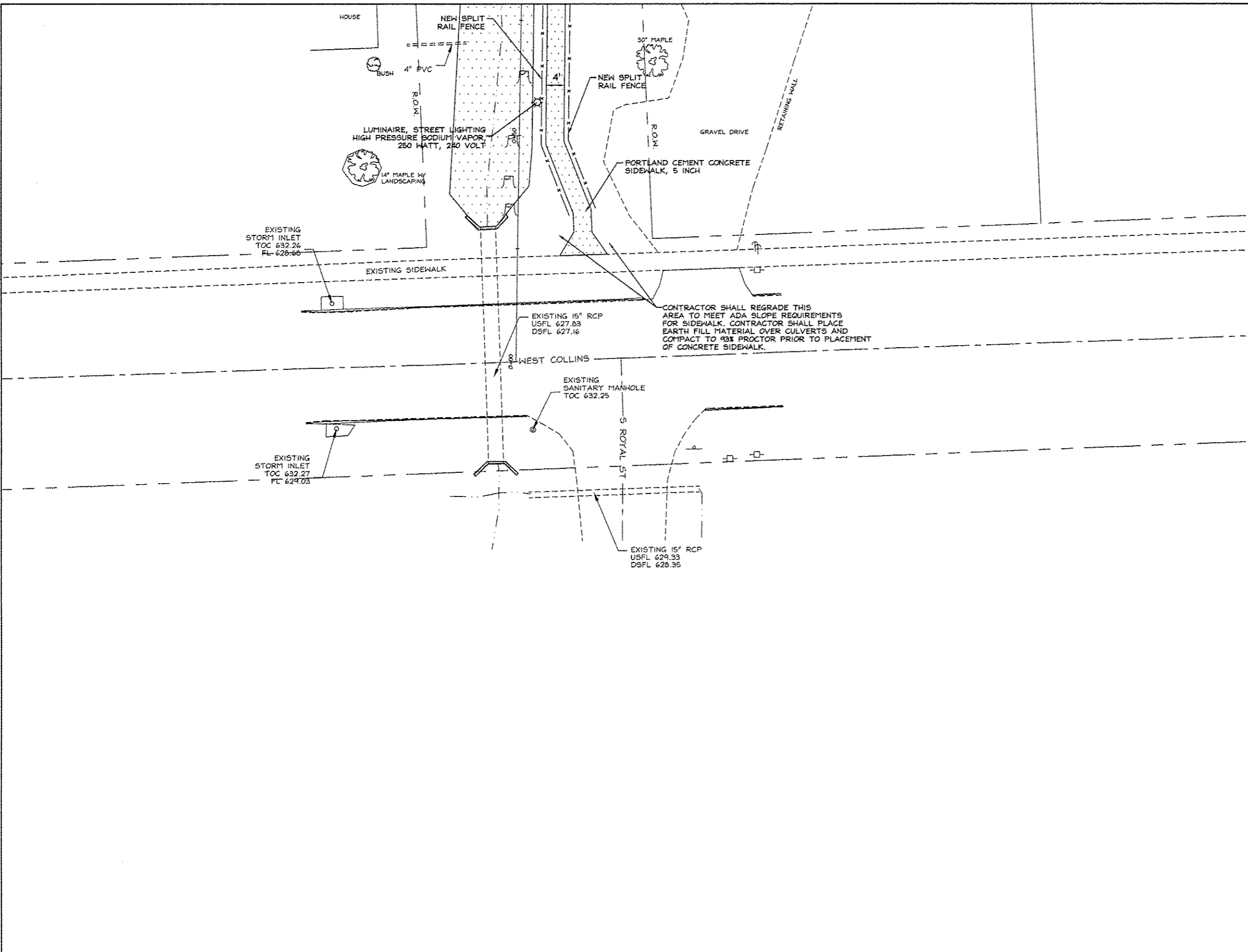


F.A. RTE.	SECTION	COUNTY	TOTAL SHEET	SHEET NO.
HWY 37 & COLLINS	10-00004-00-SW	JOHNSON	15	4



- LEGEND**
- IRON PIN FOUND
 - △ STONE FOUND
 - 1/2" IRON PIN SET
 - CONCRETE MONUMENT SET
 - ⚡ ROAD SIGN
 - ⊕ POWER POLE
 - ⊖ GUY WIRE
 - ⊕ WATER METER
 - ⊕ WATER HYDRANT
 - ⊕ LIGHT POLE

NO.	DESCRIPTION	BY	DATE	NO.	DESCRIPTION	BY	DATE
					DESIGNED		
					DRAWN	WFL	3/27/12
					CHECKED	JHC	3/27/12

VILLAGE OF GOREVILLE
 JOHNSON COUNTY, IL
 SCHOOL SAFE WAY PLAN
 PLAN SHEET

JOHN H. CRAWFORD & ASSOCIATES, P.C.
 CIVIL ENGINEERS, LAND SURVEYORS
 201 SOUTH DIVISION STREET, CARTERSVILLE, ILLINOIS 62910
 PHONE (618) 985-6310 FAX (618) 985-4632
 PROFESSIONAL DESIGN FIRM # 184-002885

SHEET NO.	
4	
ISSUE	DATE
A	3/27/12

1. Verify All Requirements, Easements, Setbacks, Encroachments, Etc. Before Proceeding With This Plan.