

STATE OF ILLINOIS  
DEPARTMENT OF TRANSPORTATION

F.A.S. RTE.	SECTION	COUNTY	TOTAL SHEETS	SHEET NO.
927	D9 BRIDGE REPAIR 2018-4	JOHNSON	15	1
ILLINOIS			CONTRACT NO. 78615	

\* 15 + 1 = 16 TOTAL SHEETS

FOR INDEX OF SHEETS, SEE SHEET NO. 2  
FOR SUMMARY OF QUANTITIES, SEE SHEET NO. 3-5

# PROPOSED HIGHWAY PLANS

FAS ROUTE 927 (TUNNEL HILL)  
OVER I-24  
PROJECT NHPP-4A87(854)  
D9 BRIDGE REPAIR 2018-4  
JOHNSON COUNTY

## TRAFFIC DATA

2018 ADT: 1,480  
SPEED LIMIT: 55 MPH

## TOWNSHIPS

TUNNEL HILL

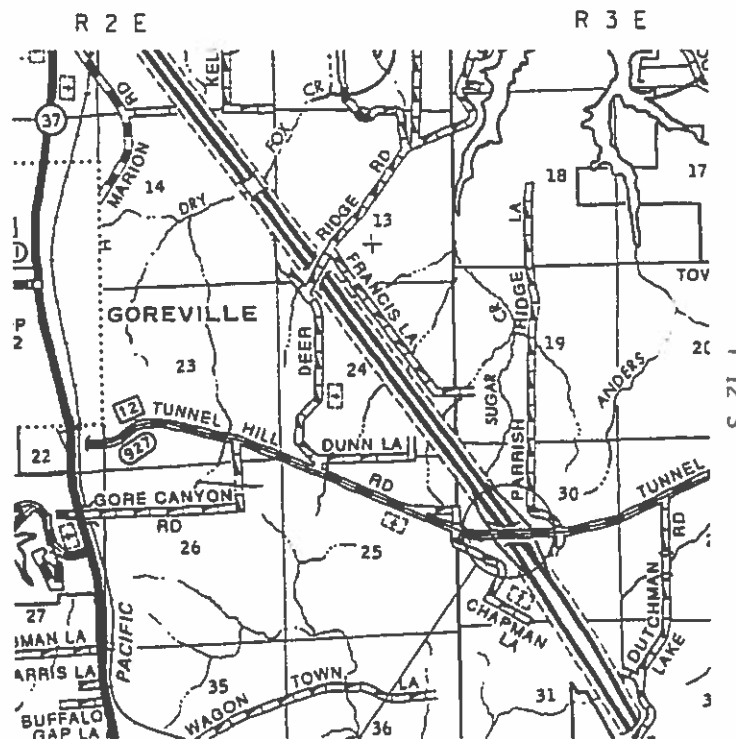
DESIGN DESIGNATION : N/A  
COORDINATE SYSTEM : ILLINOIS COORDINATE SYSTEM, EAST ZONE  
POSTED SPEED : 55 MPH

J.U.L.I.E.  
JOINT UTILITY LOCATION INFORMATION FOR EXCAVATION  
1-800-892-0123  
OR 811

PROJECT ENGINEER: DAVID PICHE  
PROJECT DESIGNER: CHRIS LAMPORT

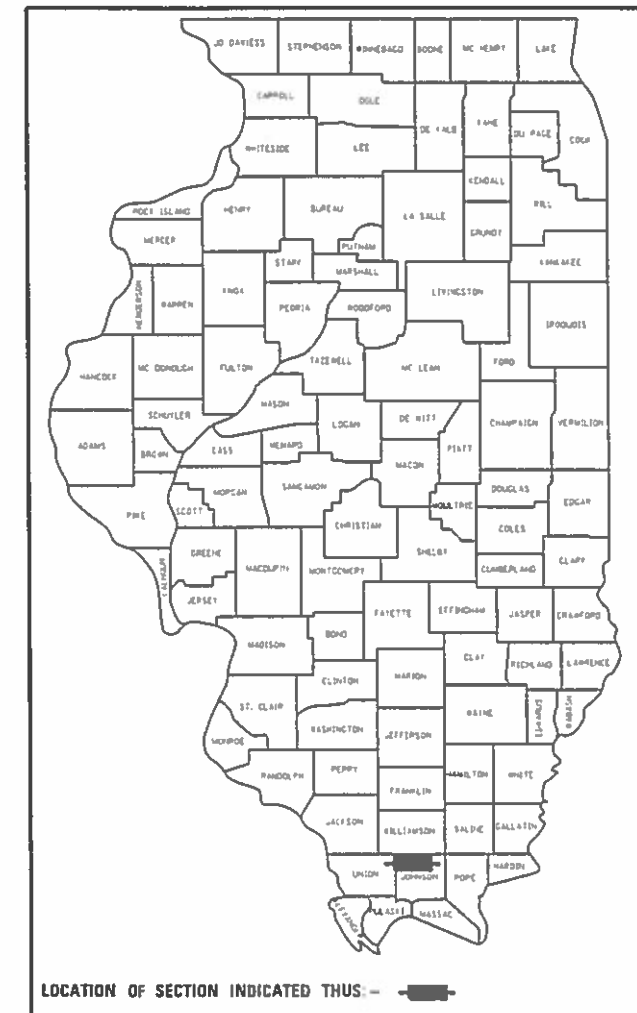
CONTRACT NO. 78615

C-99-007-18



IMPROVEMENT LOCATION  
SN 044-0035

GROSS LENGTH = 292 FT. = 0.05 MILES  
NET LENGTH = 292 FT. = 0.05 MILES



STATE OF ILLINOIS  
DEPARTMENT OF TRANSPORTATION

SUBMITTED June 22 2018  
Jeffrey Z Keiser  
REGION FIVE ENGINEER

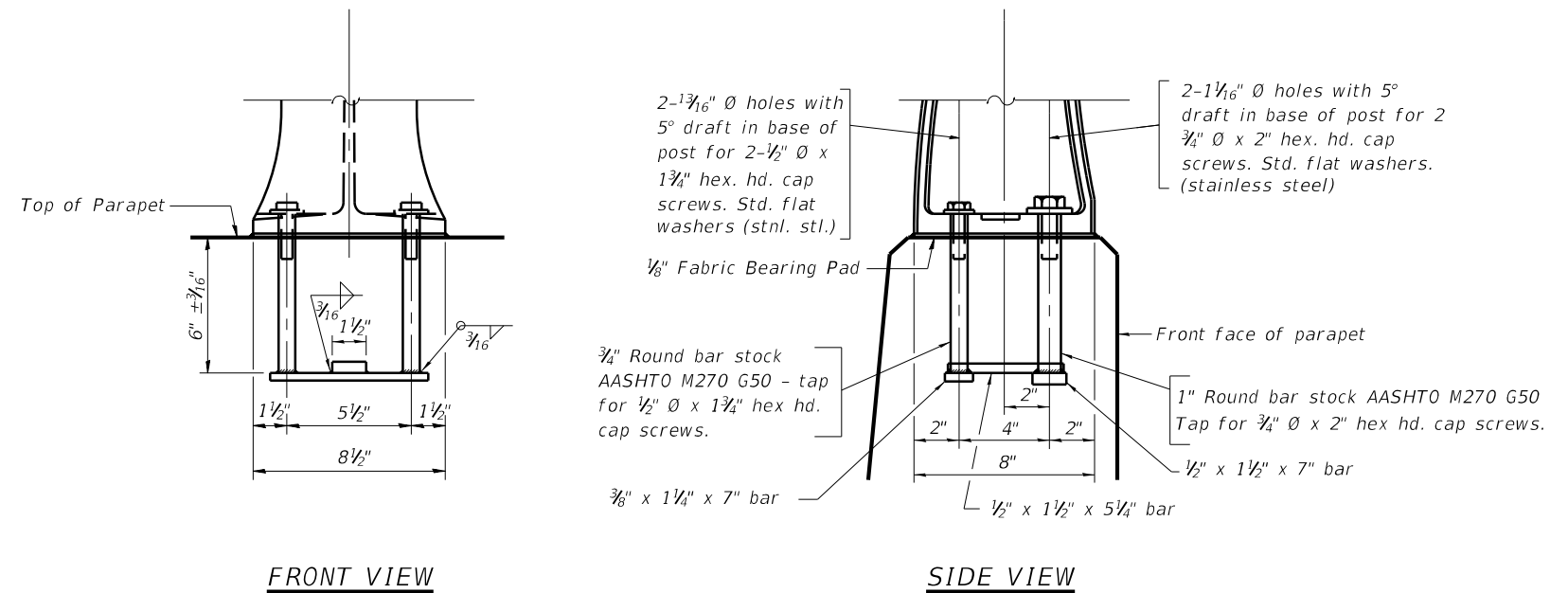
Aug 17 2018  
EA. ETC  
ENGINEER OF DESIGN AND ENVIRONMENT

Aug 17 2018  
Paul P. Chy  
DIRECTOR OF HIGHWAYS PROJECT IMPLEMENTATION

PRINTED BY THE AUTHORITY  
OF THE STATE OF ILLINOIS







RAIL POST ANCHOR ASSEMBLY DETAILS

Notes:

1) The rail on the parapet is to remain in place. In the areas where the anchor assembly will be removed, a new anchor assembly shall be provided. The cost of new anchor assemblies and any removal and re-erection of railings or posts shall be included in the cost of Concrete Removal 50102400 and no other compensation will be allowed.

2) In lieu of the cast-in-place anchor device shown, the Contractor has the option of drilling and setting steel anchor rods of the same diameter and grade as the specified cap screws according to Article 509.06 of the Standard Specifications. Embedment shall be according to the manufacturer's specifications.

1 SHEET ADDED 9-10-2018

MODEL: Default  
 FILE NAME: P:\ILLINOIS\BARDON\ITC\Illinois.gov\PIVDOT\Documents\DOT\_Offices\District 9\Projects\78615\CADD\AutoCAD\Sheet\09-78615-Sheets.dgn

USER NAME = LamportCP	DESIGNED - CPL	REVISED - _____	<b>STATE OF ILLINOIS DEPARTMENT OF TRANSPORTATION</b>	<b>PARAPET RAILING SN 044-0035</b>		F.A.S. RTE.	SECTION	COUNTY	TOTAL SHEETS	SHEET NO.
DRAWN - CPL	REVISED - _____	REVISED - _____		927	D9 BRIDGE REPAIR 2018-4	JOHNSON	15	9A		
PLOT SCALE = 6.7000' / in.	CHECKED - MAS	REVISED - _____		SCALE: _____ SHEET _____ OF _____ SHEETS STA. _____ TO STA. _____		CONTRACT NO. 78615		ILLINOIS FED. AID PROJECT		
PLOT DATE = 9/10/2018	DATE - 09/10/18	REVISED - _____								