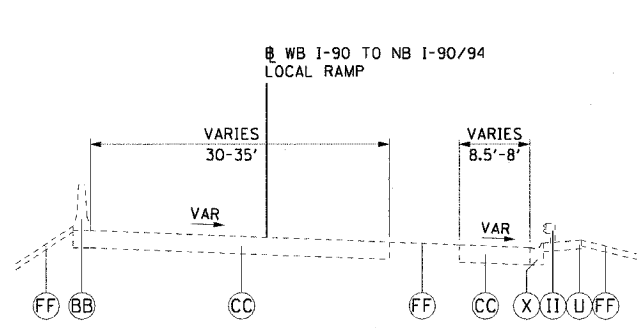
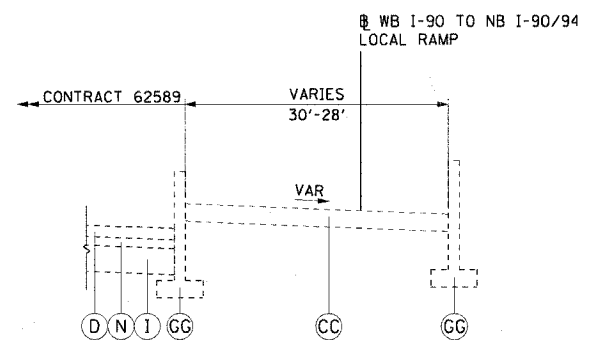


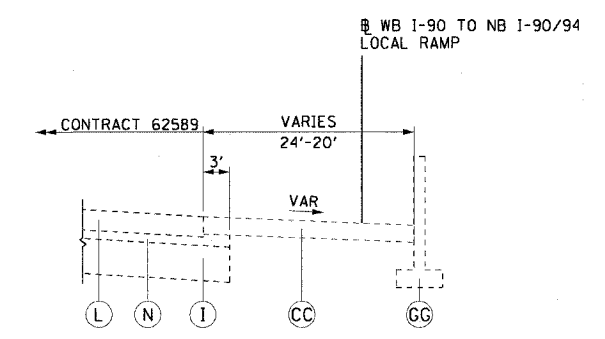
F.A.I. RTE.	SECTION	COUNTY	TOTAL SHEETS	SHEET NO.
90/94		COOK	312	15
STA.	TO STA.			
FED. ROAD DIST. NO. 1	ILLINOIS FED. AID PROJECT			
60A62	1919.15, 2021-922 PT1 & PT2 R-1			



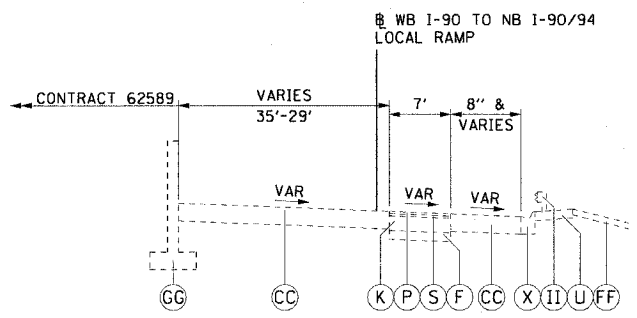
① TYPICAL SECTION
WB I-90 TO NB I-90/94 LOCAL RAMP
STA 6056+05.90 TO STA 6057+50.00



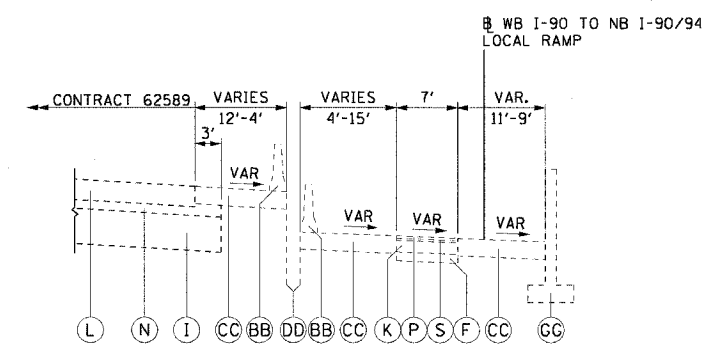
④ TYPICAL SECTION
WB I-90 TO NB I-90/94 LOCAL RAMP
STA 6063+41.33 TO STA 6066+42.70



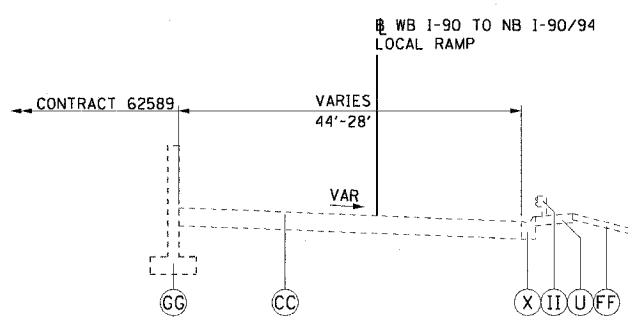
⑦ TYPICAL SECTION
WB I-90 TO NB I-90/94 LOCAL RAMP
STA 6072+40.03 TO STA 6074+29.40



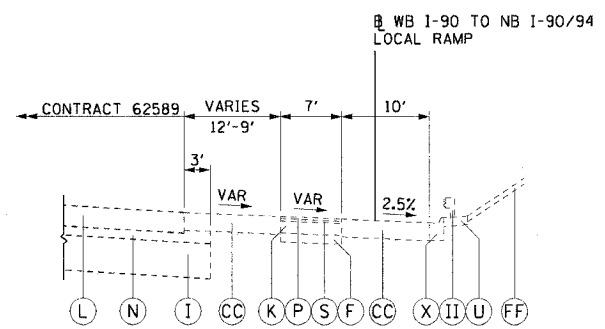
② TYPICAL SECTION
WB I-90 TO NB I-90/94 LOCAL RAMP
STA 6057+50.00 TO STA 6059+42.00



⑤ TYPICAL SECTION
WB I-90 TO NB I-90/94 LOCAL RAMP
STA 6066+42.70 TO STA 6071+37.12



③ TYPICAL SECTION
WB I-90 TO NB I-90/94 LOCAL RAMP
STA 6059+42.00 TO STA 6063+41.33



⑥ TYPICAL SECTION
WB I-90 TO NB I-90/94 LOCAL RAMP
STA 6071+37.12 TO STA 6072+40.03

EXISTING LEGEND:

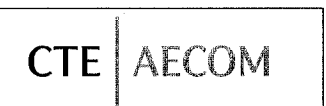
- ⓓ PORTLAND CEMENT CONCRETE SHOULDERS, 14"
- ⓕ SUB-BASE GRANULAR MATERIAL
- ⓖ SUB-BASE GRANULAR MATERIAL, TYPE B, 24"
- ⓗ CONTINUOUSLY REINFORCED PORTLAND CEMENT CONCRETE PAVEMENT, 10"
- ⓓ CONTINUOUSLY REINFORCED PORTLAND CEMENT CONCRETE PAVEMENT, 14"
- ⓓ STABILIZED SUB-BASE, 6"
- ⓓ BITUMINOUS CONCRETE SURFACE COURSE, 1/2"
- ⓓ BITUMINOUS CONCRETE BINDER COURSE, 1/2"
- ⓓ BITUMINOUS SHOULDERS SUPERPAVE, 6"
- ⓓ PIPE UNDERDRAIN, 6"
- ⓓ COMBINATION CONCRETE CURB AND GUTTER
- ⓓ BARRIER BASE
- ⓓ CONCRETE BARRIER, SINGLE FACE, 32" HEIGHT
- ⓓ TEMPORARY CONCRETE BARRIER
- ⓓ TEMPORARY PAVEMENT (INTERSTATE) - 12" P.C.C. OR 14" BITUMINOUS
- ⓓ TEMPORARY SOIL RETENTION SYSTEM
- ⓓ GRASS AREA
- ⓓ RETAINING WALL
- ⓓ GUARDRAIL

NOTE:
THE EXISTING PAVEMENT TYPES AND THICKNESSES WERE TAKEN FROM DAN RYAN DESIGN PLANS OR RECORD DRAWINGS.

REVISIONS		ILLINOIS DEPARTMENT OF TRANSPORTATION F.A.I. 90/94 (DAN RYAN EXPRESSWAY) 63RD STREET TO GARFIELD BLVD (NB LOCAL LANES)
NAME	DATE	
		EXISTING TYPICAL SECTIONS NORTHBOUND LOCAL LANES

SCALE: H₁1"=10' V₁1"=5'
DATE: June 9, 2006

DRAWN BY: NJH
CHECKED BY: RMG



P:\V\46468\CH\NB-Chrs 18 & 19\Sheet\Chrs\Typical Sections\SECTION02\3.dwg 9/4/06 5:46:53 AM