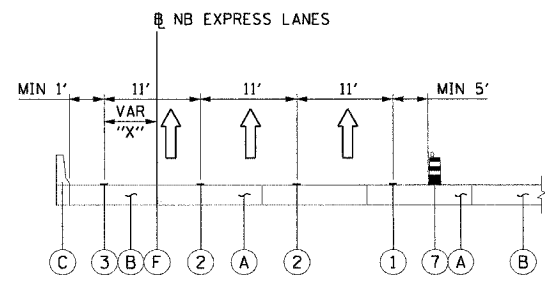


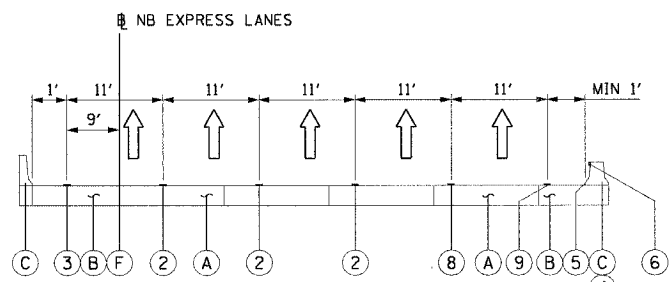
F.A.I. RTE.	SECTION	COUNTY	TOTAL SHEETS	SHEET NO.
90/94		COOK	312	48
STA.	TO STA.			
FED. ROAD DIST. NO. 1	ILLINOIS	FED. AID PROJECT		
60A62	• (1919.15, 2021-922 PT1 & PT2) R-1			

P:\P40468\63rd\11\NB-entrs IB & 15\sta\cncr 180\mca\mca_180\0212157

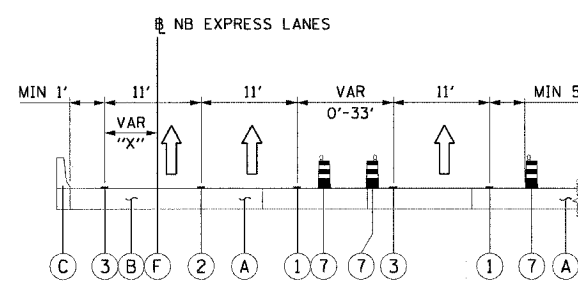


SECTION A-A STATION 2367+00 TO 2412+24.39

"X"	STATION RANGE
4'	2367+00 TO 2371+15.48
4'-0"	2371+15.48 TO 2373+95.50
0'	2373+95.50 TO 2385+00
0'-2'	2385+00 TO 2386+00
2'	2386+00 TO 2412+24.39

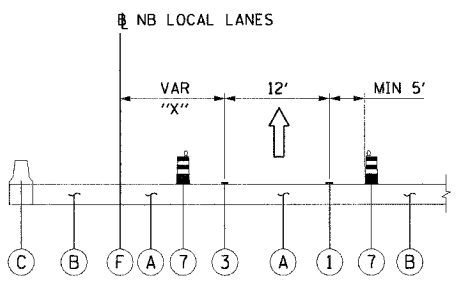


SECTION D-D STATION 2441+00 TO 2455+18.65 (STAGE 1)
SECTION D-D STATION 2454+53.94 TO 2458+00 (STAGE 2 & 3)



SECTION A1-A1 STATION 2367+00 TO 2378+31.08

"X"	STATION RANGE
4'	2367+00 TO 2371+15.48
4'-0"	2371+15.48 TO 2373+95.50
0'	2373+95.50 TO 2378+31.08

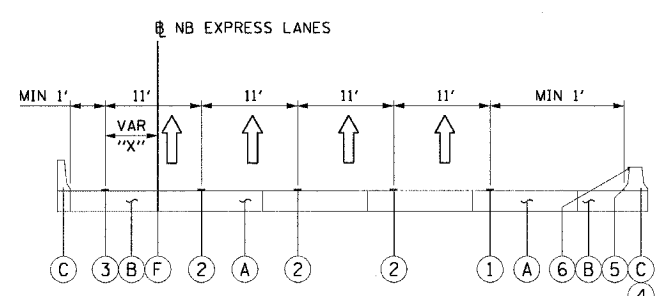


SECTION E-E STATION 4391+36.97 TO 4451+01.01

"X"	STATION RANGE
24'	4391+36.97 TO 4395+11.30
24'-12'	4395+11.30 TO 4401+26.96
12'	4401+26.96 TO 4418+00
12'-24'	4418+00 TO 4424+00
24'	4424+00 TO 4441+00
24'-0"	4441+00 TO 4449+40
0'	4449+40 TO 4451+01.01

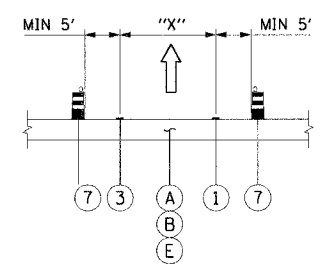
- ① PAVEMENT MARKING - LINE 4" (WHITE)
- ② PAVEMENT MARKING - LINE 5" (WHITE SKIP DASH)
- ③ PAVEMENT MARKING - LINE 4" (YELLOW)
- ④ RELOCATE TEMPORARY CONCRETE BARRIER
- ⑤ TEMPORARY PAVEMENT MARKING - LINE 6"
- ⑥ MONODIRECTIONAL PRISMATIC BARRIER REFLECTOR
- ⑦ DRUM OR BARRICADE TYPE II WITH STEADY BURN LIGHT
- ⑧ PAVEMENT MARKING - LINE 4" (WHITE SKIP DASH)
- ⑨ PAVEMENT MARKING - LINE 8" (WHITE)

- Ⓐ PAVEMENT
- Ⓑ SHOULDER
- Ⓒ EXISTING BARRIER WALL
- Ⓓ EXISTING TEMPORARY BARRIER WALL
- Ⓔ TEMPORARY PAVEMENT
- Ⓕ PAVEMENT-SHOULDER JOINT



SECTION B-B STATION 2412+24.39 TO 2474+50.00

"X"	STATION RANGE
2'	2412+24.39 TO 2428+00
2'-9"	2428+00 TO 2431+50
9'	2431+50 TO 2473+50
9'-4"	2473+50 TO 2474+51.44



SECTION C-C
RAMP SECTIONS

RAMP	"X"
67TH STREET EXIT RAMP	12'
71ST STREET ENTRANCE RAMP	12'
WESTBOUND SKYWAY EXPRESS RAMP	12'
WESTBOUND SKYWAY LOCAL RAMP	16'
63RD STREET ENTRANCE RAMP	16'
59TH STREET EXIT RAMP	16'
55TH STREET EXIT RAMP	16'

NOTES:
1. TYPICAL SECTIONS NEED TO BE VERIFIED WITH THE TRAFFIC CONTROL PLANS WITH REGARDS TO TRAFFIC CONTROL CONDITIONS AND PAVEMENT MARKING SIZES.

REVISIONS	
NAME	DATE

MOTTS-01
ILLINOIS DEPARTMENT OF TRANSPORTATION
F.A.I. 90/94 (DAN RYAN EXPRESSWAY)
63RD STREET TO GARFIELD BLVD (NB LOCAL LANES)
SUGGESTED STAGES OF CONSTRUCTION AND TRAFFIC CONTROL TYPICAL SECTIONS
SCALE: NONE DRAWN BY: PHP
DATE: June 9, 2006 CHECKED BY: RMG



3-35-08 TRH 6/27/2006