

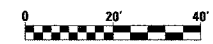
F.A.I. RTE.	SECTION	COUNTY	TOTAL SHEETS	SHEET NO.
90/94	*	COOK	312	88
STA. 6060+50	TO STA. 6065+25			
FED. ROAD DIST. NO. 1 ILLINOIS FED. AID PROJECT				
60A62 * (1919.15, 2021-922 PT1 & PT2) R-1				

- LEGEND: EXISTING**
- INLET
  - CATCH BASIN
  - MANHOLE
  - STORM SEWER
  - COMBINED SEWER
  - PIPE UNDERDRAIN
  - [R] STRUCTURE TO BE REMOVED
  - [AD] STRUCTURE TO BE ADJUSTED
  - //// STORM SEWER REMOVAL
  - //// COMBINED SEWER REMOVAL
  - //// WATER MAIN REMOVAL
  - \*\*\*\*\* ABANDON EXISTING PIPE

**EXISTING CONDITIONS AND REMOVAL**

- PROPOSED IMPROVEMENTS**
- LEGEND: PROPOSED**
- INLET
  - CATCH BASIN
  - MANHOLE
  - STORM SEWER
  - PIPE UNDERDRAIN
  - PROPOSED SWALE
  - HIGH POINT
  - LOW POINT
  - (XX-01) PROPOSED STRUCTURE

- NOTES:**
- SEE DRAINAGE SCHEDULES FOR STRUCTURE, PIPE AND UNDERDRAIN INFORMATION.
  - THE LOCATION OF DRAINAGE STRUCTURES AND PIPES CONSTRUCTED IN PREVIOUS CONTRACTS IS BASED OFF OF CONTRACT PLAN DRAWINGS. THE CONTRACTOR MUST VERIFY LIMITS OF PREVIOUS CONSTRUCTION IN THE FIELD.



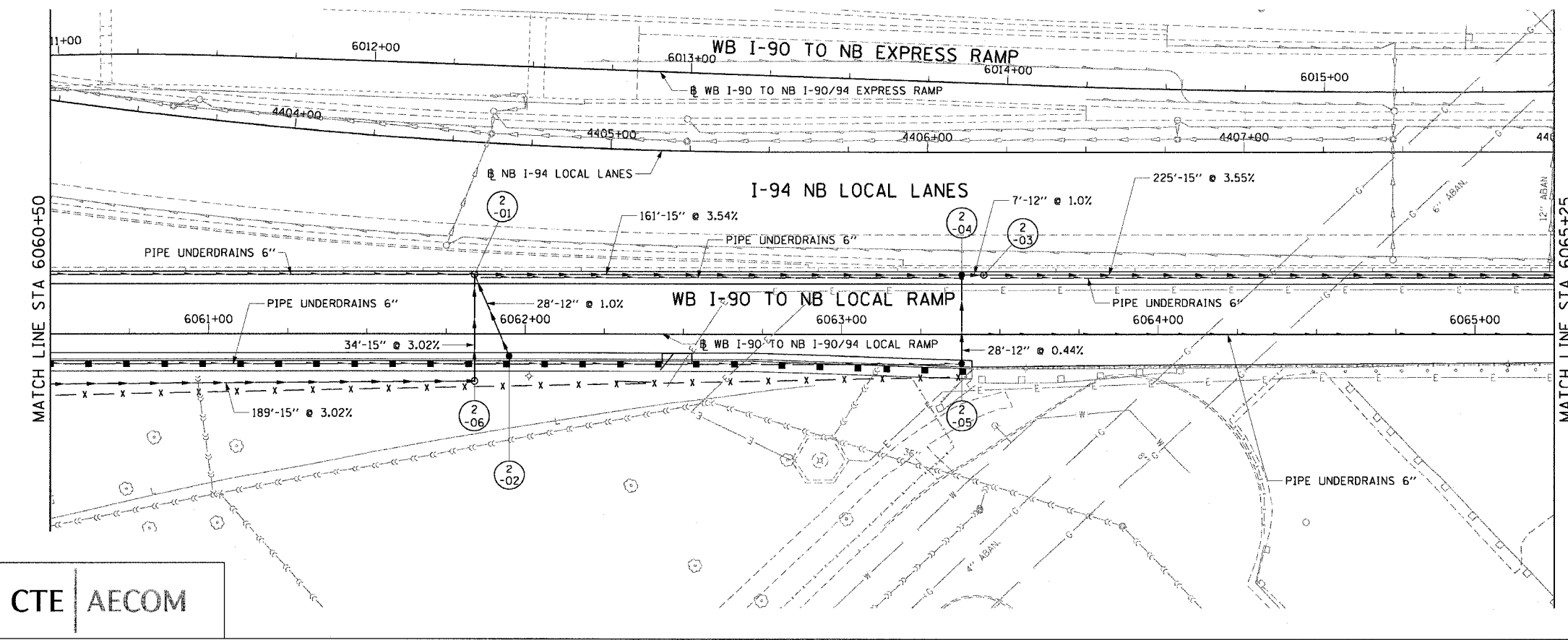
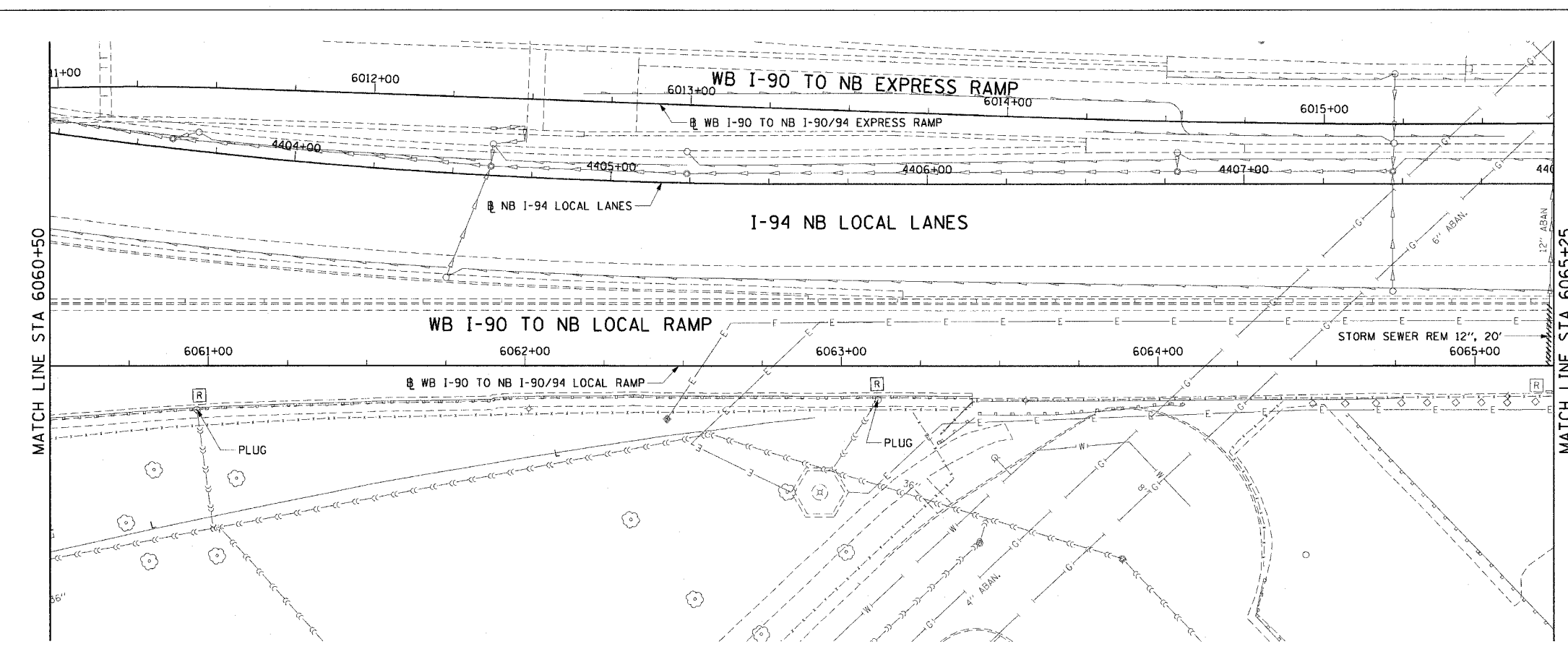
REVISIONS	
NAME	DATE

ILLINOIS DEPARTMENT OF TRANSPORTATION  
 F.A.I. 90/94 (DAN RYAN EXPRESSWAY)  
 63RD STREET TO GARFIELD BLVD (NB LOCAL LANES)

**DRAINAGE AND UTILITY PLANS**

SCALE: 1"=20'  
 DATE: June 9, 2006

DRAWN BY: NJH  
 CHECKED BY: RMC



CTE | AECOM

P:\40465\civil\8-civil\18 & 19\st\cmt\Board\drainage and utility plan\du2.dwg 6/5/2006 9:11:27 AM