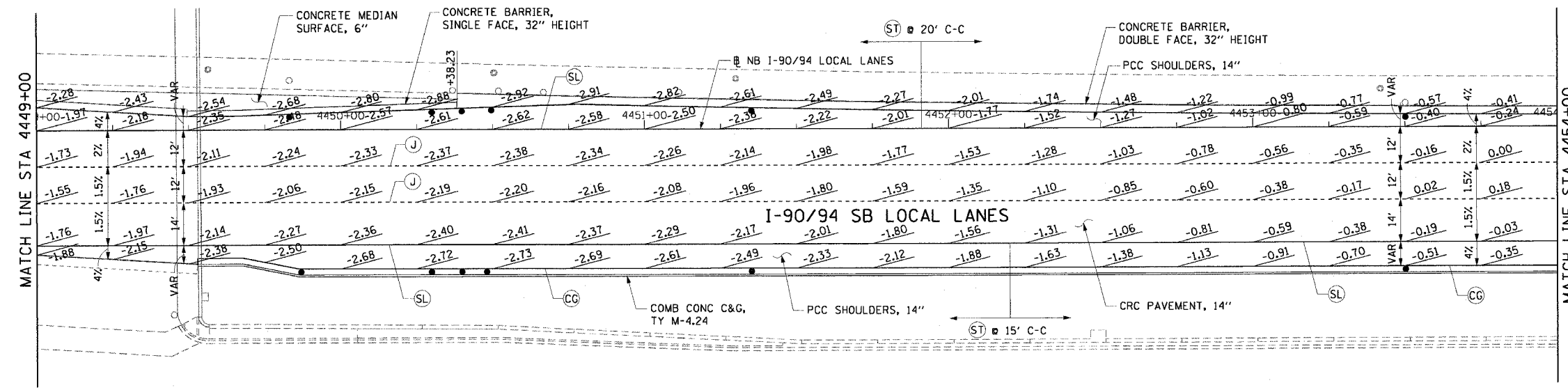


F.A.I. RTE.	SECTION	COUNTY	TOTAL SHEETS	SHEET NO.
90/94	*	COOK	312	109
STA. 4449+00		TO STA. 4459+00		
FED. ROAD DIST. NO. 1		ILLINOIS FED. AID PROJECT		
60A62		• (1919.15, 2021-922 PT1 & PT2) R-1		

W. 59th ST

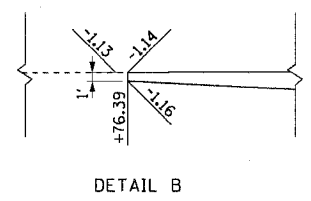
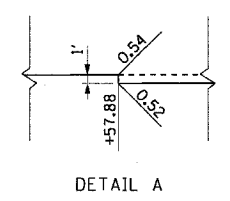
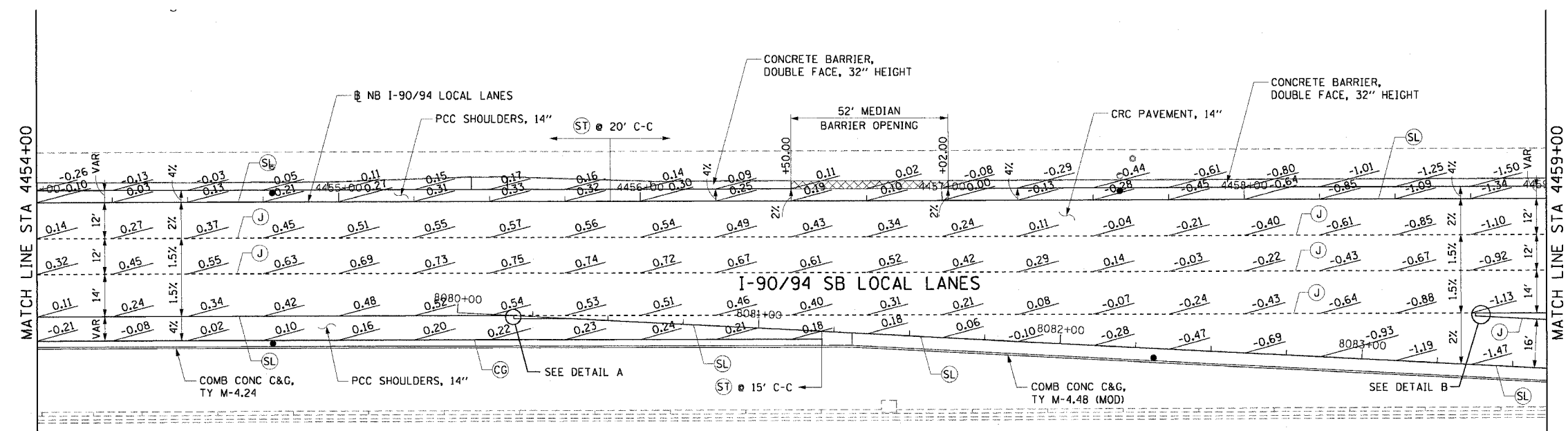


NOTES:

- SEE ALIGNMENT AND TIES SHEETS FOR CURVE INFORMATION.
- SEE ROADWAY PLAN SHEETS FOR BEGINNING AND END TAPER STATIONS AND TAPER RATES.
- PAVEMENT ELEVATIONS ARE SHOWN AT 25' INTERVALS.
- SEE ROADWAY DETAILS FOR THE TYING OF THE BARRIER BASE TO THE PCC SHOULDER.
- AT THE MEDIAN BARRIER OPENING, THE ELEVATION OF THE LOCAL LANE EDGE OF SHOULDER SHALL MATCH THE ELEVATION OF THE EXPRESS LANE EDGE OF SHOULDER.

LEGEND:

- CG LONGITUDINAL CURB AND CUTTER JOINT - NO. 6 EPOXY COATED TIE BARS, 24" LONG AT 24" C-C
- J LONGITUDINAL SAWED JOINT - NO. 6 EPOXY COATED TIE BARS, 30" LONG AT 30" C-C
LONGITUDINAL CONSTRUCTION JOINT - NO. 8 EPOXY COATED TIE BARS, 24" LONG AT 24" C-C
- SL LONGITUDINAL SHOULDER CONSTRUCTION JOINT - NO. 8 EPOXY COATED TIE BARS, 30" LONG AT 24" C-C
- ST TRANSVERSE SHOULDER CONTRACTION JOINT
- SPACED 15' C-C ALONG OUTSIDE SHOULDER
- SPACED 20' C-C AT ALL OTHER LOCATIONS



CTE | AECOM

REVISIONS	
NAME	DATE

PJE-6
ILLINOIS DEPARTMENT OF TRANSPORTATION
F.A.I. 90/94 (DAN RYAN EXPRESSWAY)
63RD STREET TO GARFIELD BLVD (NB LOCAL LANES)
PAVEMENT JOINTING AND ELEVATION PLANS
SCALE: 1"=20'
DATE: June 9, 2006
DRAWN BY: PHP
CHECKED BY: NJH

6/5/2006 9:25:34 AM P:\P\453\CH\118\CH\118.ctb 15:56:11 1600\le sheets\01600002.dwg