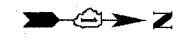
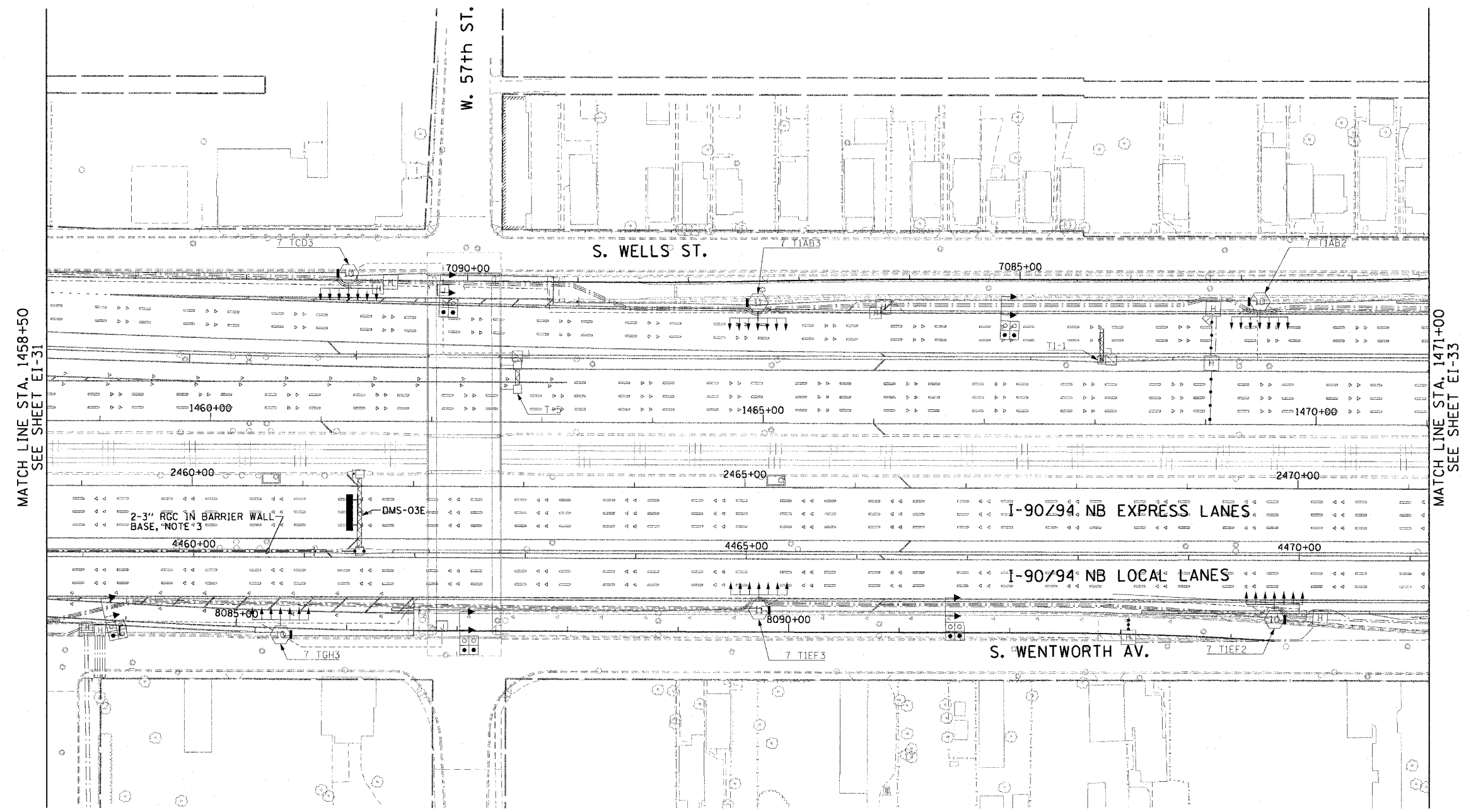


F.A.I. RTE.	SECTION	COUNTY	TOTAL SHEETS	SHEET NO.
90/94		COOK	312	183
STA. 1458+50.00		TO STA. 1471+00.00		
FED. ROAD DIST. NO. 1 ILLINOIS FED. AID PROJECT				
60A62 • (1919.15, 2021-922 PT1 & PT2) R-1				



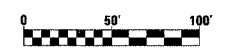
NOTES:

1. SEE DRAWINGS EI-100 AND EI-101 FOR ELECTRICAL SYMBOLS AND ABBREVIATIONS.
2. UNLESS NOTED OTHERWISE, ALL ITEMS AND WORK SHOWN IN HEAVY LINE WEIGHT ON THIS DRAWING ARE PROPOSED NEW ITEMS AND WORK.
3. SEE DRAWING EI-108 FOR CONDUITS ROUTED TO DMS STRUCTURE.



MATCH LINE STA. 1458+50
SEE SHEET EI-31

MATCH LINE STA. 1471+00
SEE SHEET EI-33



EI-32

REVISIONS	
NAME	DATE

ILLINOIS DEPARTMENT OF TRANSPORTATION
 F.A.I. 90/94 (DAN RYAN EXPRESSWAY)
 63RD STREET TO GARFIELD BLVD (NB LOCAL LANES)
ELECTRICAL INFRASTRUCTURE PLAN

SCALE: 1"=50'
 DATE: June 9, 2006

DRAWN BY: HAR
 CHECKED BY: JPC

CTE | AECOM

P:\04066\elect\08\enr\18 & 19\cont\06\1801\180032203.rvt 06/02/2006 03:51:24 PM