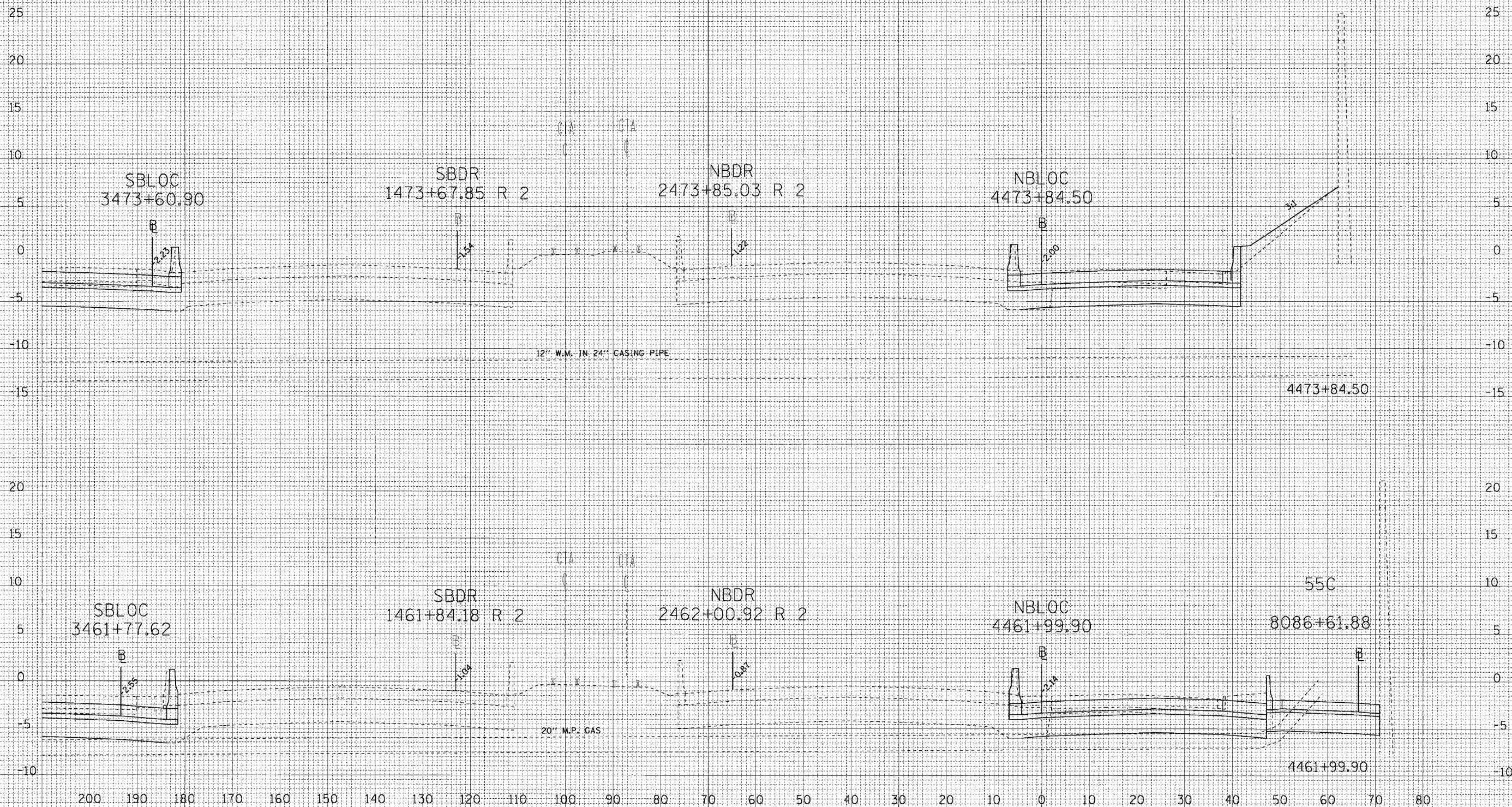


F.A.I. RTE.	SECTION	COUNTY	TOTAL SHEETS	SHEET NO.
90/94	*	COOK	312	288

FED. ROAD DIST. NO. 1	ILLINOIS	FED. AID PROJECT
60A62	*	(1919.15, 2021-922 PT1 & PT2) R-1

DATE	
BY	
FINAL SURVEY	
NOTE BOOK	
NO.	

DATE	
BY	
ORIGINAL SURVEY	
NOTE BOOK	
NO.	



CTE | AECOM

6/17/2006 9:21:05 AM P:\46466\ch\118\entrs B & 19\1\1\ent\B06\cross sections\valve nbloc_utility_2.dwg