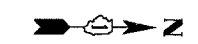
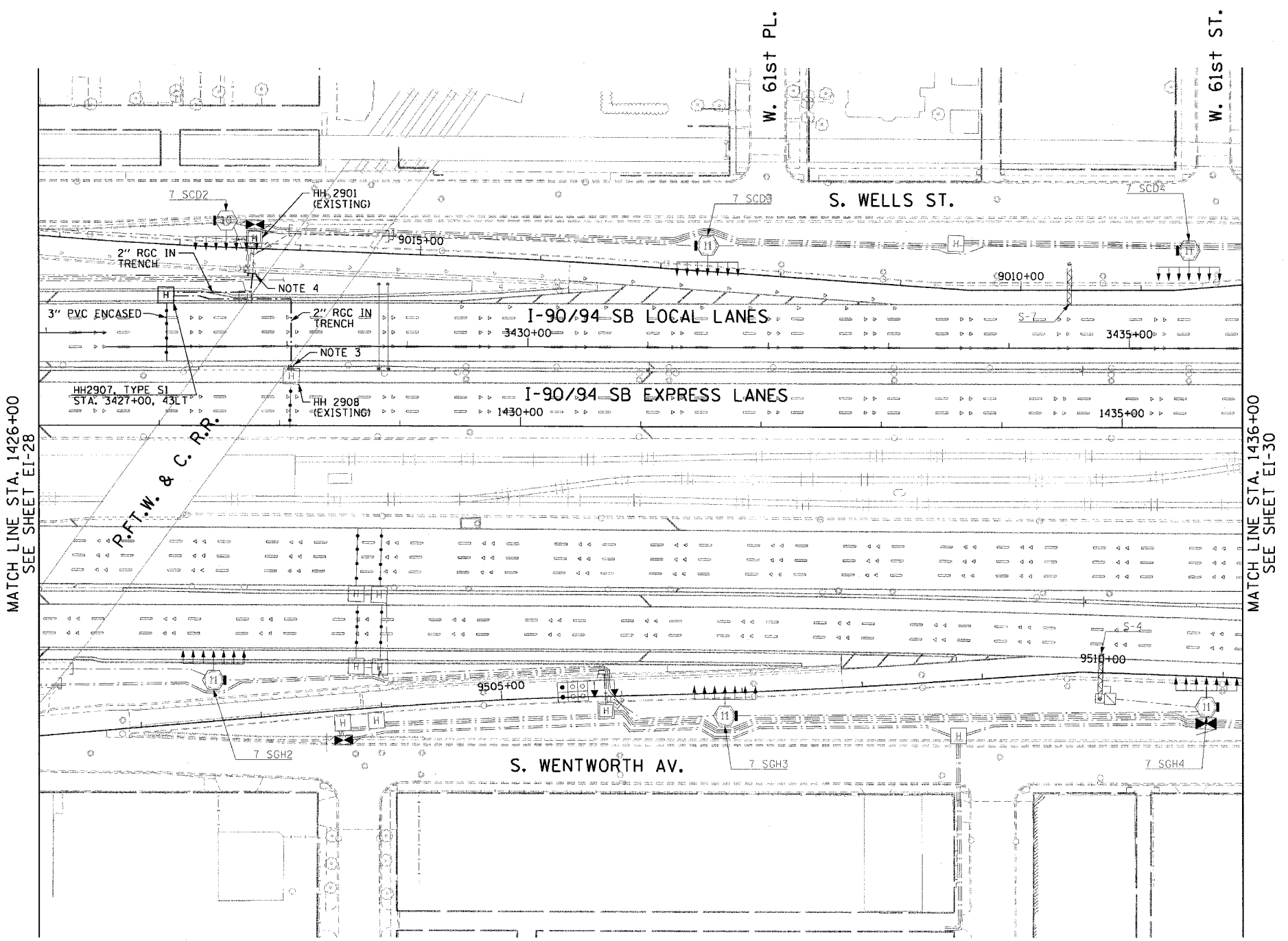


| | | | | |
|---|---------|--------------------|--------------|-----------|
| F.A.I. RTE. | SECTION | COUNTY | TOTAL SHEETS | SHEET NO. |
| 90/94 | * | COOK | 247 | 134 |
| STA. 1426+00.00 | | TO STA. 1436+00.00 | | |
| FED. ROAD DIST. NO. 1 ILLINOIS FED. AID PROJECT | | | | |
| 60A63 • (1919.15, 2021-922 PT1 & PT2) R-2 | | | | |



NOTES:

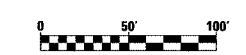
- SEE DRAWINGS EI-100 AND EI-101 FOR ELECTRICAL SYMBOLS AND ABBREVIATIONS.
- SEE DRAWINGS EI-102, EI-103 AND EI-104 FOR TYPICAL HANDHOLE INSTALLATION DETAILS.
- THE CONTRACTOR SHALL LOCATE THE EXISTING CONDUIT STUB-OUTS INSTALLED IN IDOT CONTRACT NO. 62302 AND CONNECT THE PROPOSED CONDUITS.
- THE CONTRACTOR SHALL LOCATE THE EXISTING CONDUIT STUB-OUT INSTALLED IN IDOT CONTRACT NO. 62693 AND CONNECT THE PROPOSED CONDUIT.
- UNLESS NOTED OTHERWISE, ALL ITEMS AND WORK SHOWN IN HEAVY LINE WEIGHT ON THIS DRAWING ARE PROPOSED NEW ITEMS AND WORK.



MATCH LINE STA. 1426+00
SEE SHEET EI-28

MATCH LINE STA. 1436+00
SEE SHEET EI-30

P.F.T.W. & C. R.P.



EI-29

| REVISIONS | |
|-----------|------|
| NAME | DATE |
| | |
| | |
| | |
| | |
| | |
| | |
| | |
| | |
| | |
| | |

ILLINOIS DEPARTMENT OF TRANSPORTATION
F.A.I. 90/94 (DAN RYAN EXPRESSWAY)
63RD STREET TO GARFIELD BLVD (SB LOCAL LANES)

ELECTRICAL INFRASTRUCTURE PLAN

SCALE: 1"=50'
DATE: June 9, 2006

DRAWN BY: HAR
CHECKED BY: JPC

CTE | AECOM

06/09/2006 03:03:36 PM