

F.A.I. RTE.	SECTION	COUNTY	TOTAL SHEETS	SHEET NO.
90/94	*	COOK	247	139
STA.		TO STA.		
60A63		• (1919.15, 2021-922 PT1 & PT2) R-2		
FED. ROAD DIST. NO. 1 ILLINOIS FED. AID PROJECT				

ELECTRICAL SYMBOLS FOR PROPOSED WORK

GENERAL ELECTRICAL CALLOUTS

- LIGHT TOWER FOUNDATION
NUMBER INSIDE HEXAGON INDICATES TOWER TYPE
HANDHOLE LOCATION AS INDICATED
TOWER INSTALLED BY OTHERS,
UNDER A SEPARATE CONTRACT

TYPE	TOWER HEIGHT
10	- 100 FEET
11	- 110 FEET
12	- 120 FEET

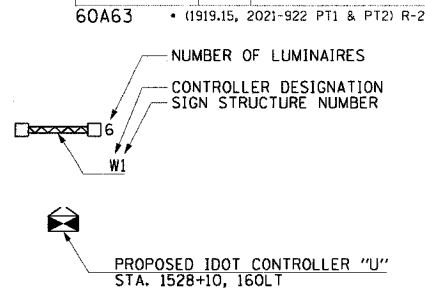
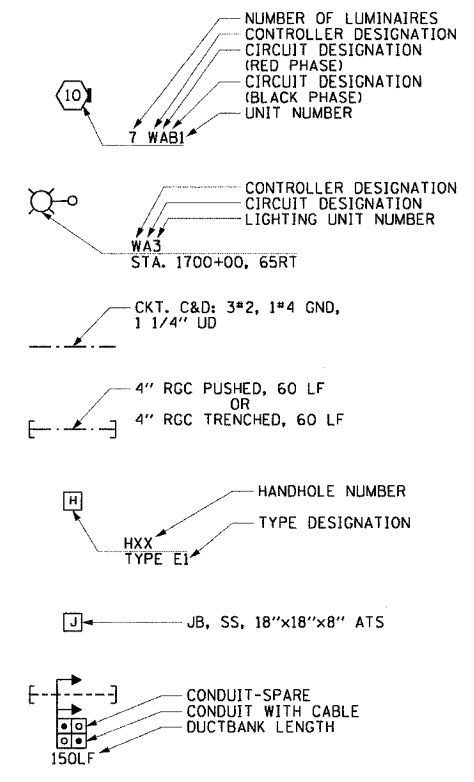
- LIGHT POLE FOUNDATION
POLE INSTALLED BY OTHERS
UNDER A SEPARATE CONTRACT
- TEMPORARY LIGHTING UNIT INCLUDING 60 FOOT
WOOD POLE (CLASS 4), 8'-0" MAST ARM WITH
400 WATT HPS LUMINAIRE
- ELECTRIC HANDHOLE: TYPE AS INDICATED

 - TYPE E1: PC CONCRETE, 21.5"x21.5"x30"
IDOT STANDARD B14001
 - TYPE E2: PC CONCRETE-HEAVY DUTY, 22"x22"x30",
IDOT STANDARD B14001
 - TYPE C1: COMMUNICATIONS VAULT
 - TYPE S1: PC CONCRETE-HEAVY DUTY, 22"x22"x36"
 - TYPE S2: PC CONCRETE-HEAVY DUTY SPECIAL,
30"x30"x36"

- JUNCTION BOX: TYPE AND SIZE AS INDICATED
ON PLANS
- PULL BOX: TYPE AND SIZE AS INDICATED
ON PLANS
- TELEPHONE CONNECTION
- FIBER OPTIC COMMUNICATIONS HUT
- LIGHTED SIGN STRUCTURE-CANTILEVER TYPE
(NUMBER OF FLUORESCENT FIXTURES AS
INDICATED WITH ASSOCIATED DISCONNECT
SWITCH - TYP.) (N.I.C.)

- LIGHTED SIGN STRUCTURE-TRUSS TYPE
- TEMPORARY LIGHTED SIGN STRUCTURE-TRUSS
TYPE, QUANTITY OF LUMINAIRES AS SHOWN
ON SIGNING PLANS
- LIGHTED SIGN STRUCTURE-BRIDGE MOUNT TYPE
- DYNAMIC MESSAGE SIGN
- FLASHING BEACON SIGN
- CLOSED CIRCUIT TELEVISION CAMERA
- MICROWAVE DETECTOR
- DETECTOR LOOP
- CONTROLLER CABINET FOUNDATION
- CONTROLLER CABINET FOUNDATION: SURVEILLANCE
- CONTROLLER CABINET FOUNDATION: SURVEILLANCE,
TYPE 334
- RAMP METER SIGNAL POLE/HEAD FOUNDATION
- RAMP METER FLASHER FOUNDATION
- TEMPORARY WOOD POLE, 50 FOOT LENGTH
(10 FOOT BURIED, 40 FOOT INSTALLED HEIGHT)
- HIGHWAY ADVISORY RADIO ANTENNA
- ELECTRIC UTILITY POLE
- CCTV CAMERA POLE
- PULLING PEDESTAL

- POLE MOUNTED ELECTRIC UTILITY TRANSFORMER(S)
- PAD MOUNTED ELECTRIC UTILITY TRANSFORMER
- GROUND ROD
- MAIN SERVICE FUSED DISCONNECT SWITCH
(RATING AS INDICATED)
- EXISTING RACEWAY OR CONDUIT RUN
AS INDICATED ON PLANS
- RACEWAY EMBEDDED IN STRUCTURE
- RACEWAY OR DIRECT BURIAL CABLE
UNDERGROUND WITHOUT ENCASEMENT
- RIGID GALVANIZED STEEL CONDUIT
SLEEVE, TRENCHED OR PUSHED
- UNDERGROUND REINFORCED CONCRETE ENCASED
DUCTBANK, UNO. (NUMBER, TYPE, AND SIZE OF
DUCTS AS SHOWN)
- RACEWAY OR CONDUIT IN TRENCH, TYPE AS
INDICATED ON PLANS
- AERIAL CABLE, TYPE AS INDICATED ON PLANS
- CONDUIT TURNED DOWN
- CONDUIT TURNED UP



ELECTRICAL SYMBOLS FOR EXISTING CONDITIONS

- EXISTING LIGHTING UNIT, TWIN LUMINAIRE
- EXISTING LIGHTING UNIT
- EXISTING TEMPORARY LIGHTING UNIT
- EXISTING CDOT LIGHTING UNIT
- EXISTING UNDERPASS LUMINAIRE
- EXISTING ELECTRIC HANDHOLE
- EXISTING JUNCTION BOX
- EXISTING PULL BOX
- EXISTING TELEPHONE CONNECTION
- EXISTING FIBER OPTIC COMMUNICATIONS HUT
- EXISTING ELECTRIC HANDHOLE/MANHOLE

- EXISTING CDOT ELECTRIC HANDHOLE/MANHOLE
- EXISTING LIGHTED SIGN STRUCTURE-
CANTILEVER TYPE
- EXISTING LIGHTED SIGN STRUCTURE-TRUSS TYPE
- EXISTING LIGHTED SIGN STRUCTURE-
BRIDGE MOUNT TYPE
- EXISTING DYNAMIC MESSAGE SIGN
- EXISTING FLASHING BEACON SIGN
- EXISTING CLOSED CIRCUIT TELEVISION CAMERA
- EXISTING MICROWAVE DETECTOR
- EXISTING DETECTOR LOOP
- EXISTING LIGHTING CONTROLLER, DUPLEX
- EXISTING CONTROLLER CABINET
- EXISTING RAMP METER SIGNAL POLE/HEAD
- EXISTING PULLING PEDESTAL

- EXISTING RAMP METER FLASHER
- EXISTING HIGHWAY ADVISORY RADIO ANTENNA
- EXISTING CCTV CAMERA POLE
- EXISTING UTILITY SERVICE CONNECTION,
POLE MOUNTED
- EXISTING UTILITY SERVICE CONNECTION,
PAD MOUNTED
- EXISTING CONCEALED CONDUIT IN STRUCTURE
- EXISTING EXPOSED CONDUIT
- EXISTING RACEWAY OR DIRECT BURIED CABLE
WITHOUT ENCASEMENT
- EXISTING CONCEALED CONDUIT UNDERGROUND,
TRENCHED OR PUSHED
- EXISTING ELECTRIC CABLE IN CONDUIT

REVISIONS	
NAME	DATE

ILLINOIS DEPARTMENT OF TRANSPORTATION
F.A.I. 90/94 (DAN RYAN EXPRESSWAY)
63RD STREET TO GARFIELD BLVD (SB LOCAL LANES)

ELECTRICAL SYMBOLS

SCALE: NOT TO SCALE
DATE: June 9, 2006

DRAWN BY: HAR
CHECKED BY: JPC



EI-100

06/09/2006 03:03:29 PM