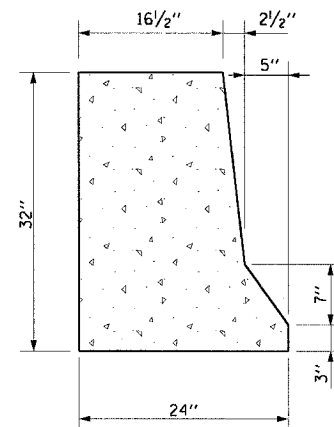
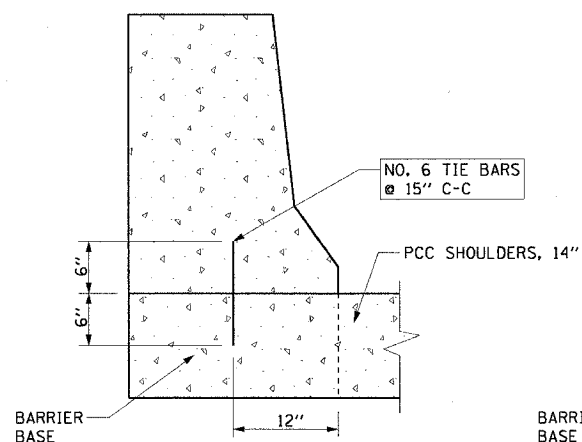


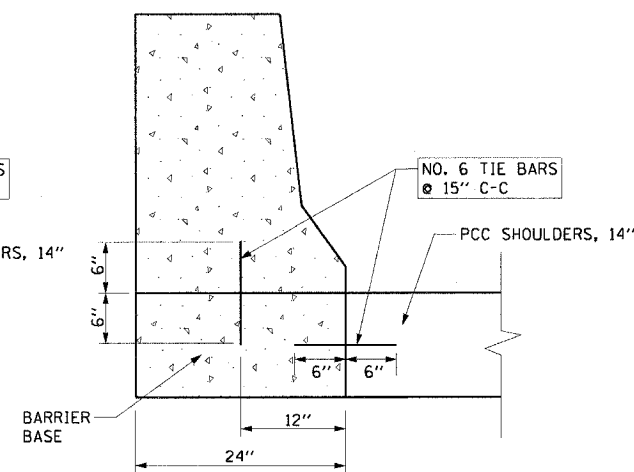
F.A.I. RTE.	SECTION	COUNTY	TOTAL SHEETS	SHEET NO.
90/94	*	COOK	247	162
STA.		TO STA.		
FED. ROAD DIST. NO. 1		ILLINOIS FED. AID PROJECT		
60A63		* (1919.15, 2021-922 PT1 & PT2) R-2		



CONCRETE BARRIER
TYPICAL SECTION



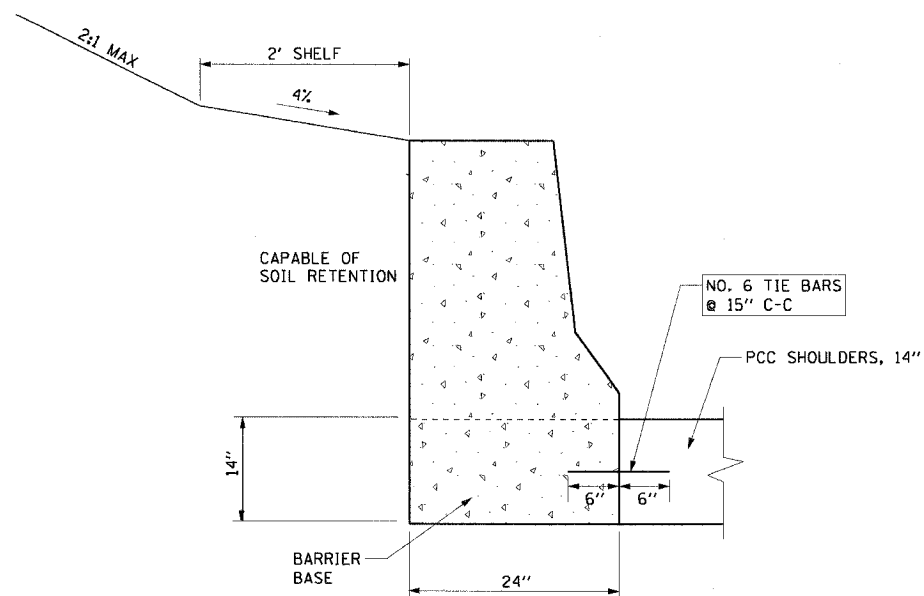
ANCHORING METHOD



CONCRETE BARRIER ON
INDEPENDANT FOUNDATION

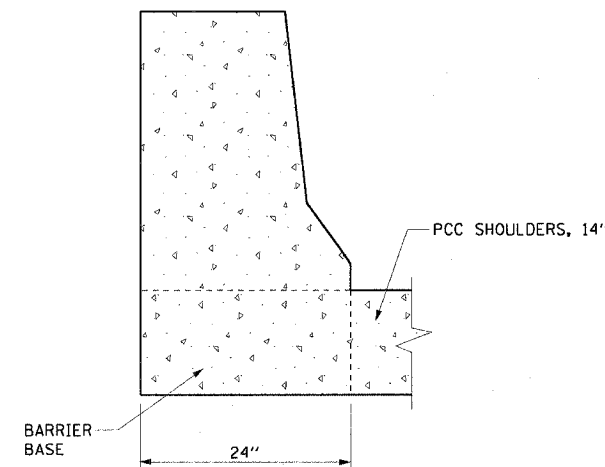
NOTE:

1. TIE BARS SHALL BE EPOXY COATED AND INCLUDED IN THE COST OF CONCRETE BARRIER, SINGLE FACE, 32" HEIGHT AND BARRIER BASE.
2. THE CONTRACTOR HAS THE OPTION OF CHOOSING BETWEEN ANCHORING METHODS SHOWN ON THIS SHEET.



MONOLITHIC CONCRETE BARRIER

IF SOIL RETENTION IS USED, 14" PCC SHOULDER PAVEMENT MUST BE IN PLACE PRIOR TO BACKFILLING BARRIER WALL



CONCRETE BARRIER INTEGRAL
WITH PCC SHOULDERS, 14"

CONCRETE BARRIER, SINGLE FACE, 32" HEIGHT

CTE | AECOM

REVISIONS	
NAME	DATE

ILLINOIS DEPARTMENT OF TRANSPORTATION
F.A.I. 90/94 (DAN RYAN EXPRESSWAY)
63RD STREET TO GARFIELD BLVD (SB LOCAL LANES)

ROADWAY DETAILS
CONCRETE BARRIER, SINGLE FACE, 32" HEIGHT

SCALE: NONE
DATE: June 9, 2006

DRAWN BY: NJH
CHECKED BY: RMG

RDT-2

107:29 PM
6/5/2006