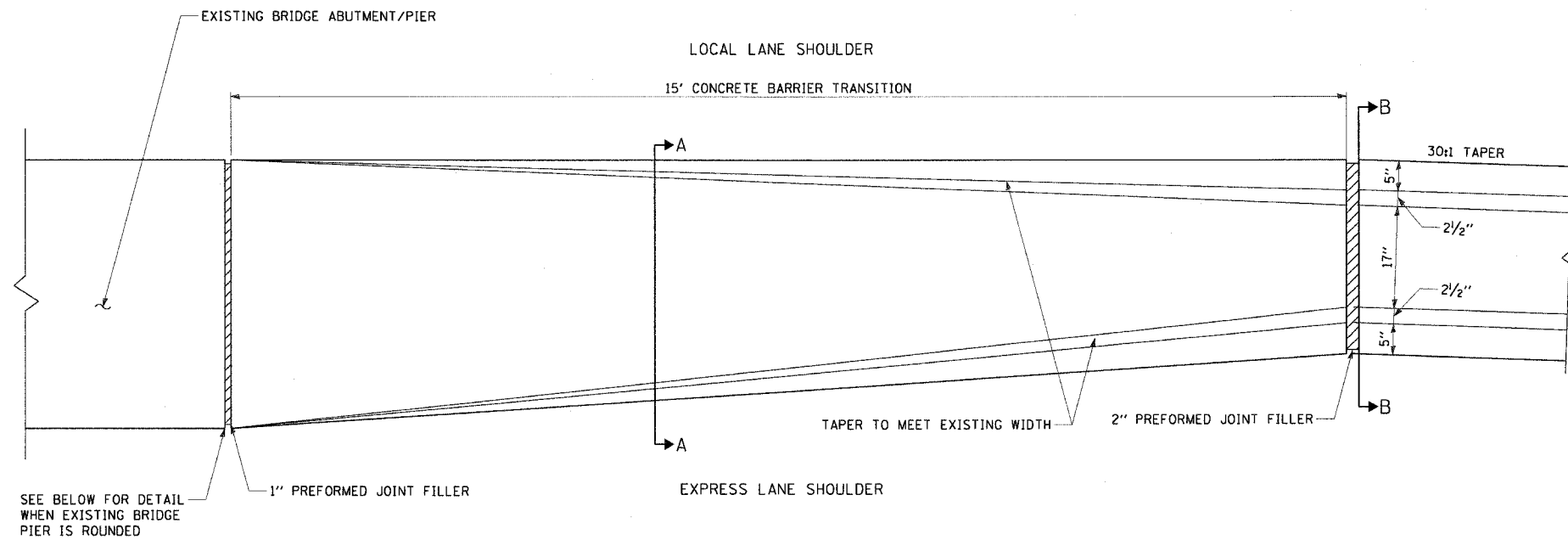
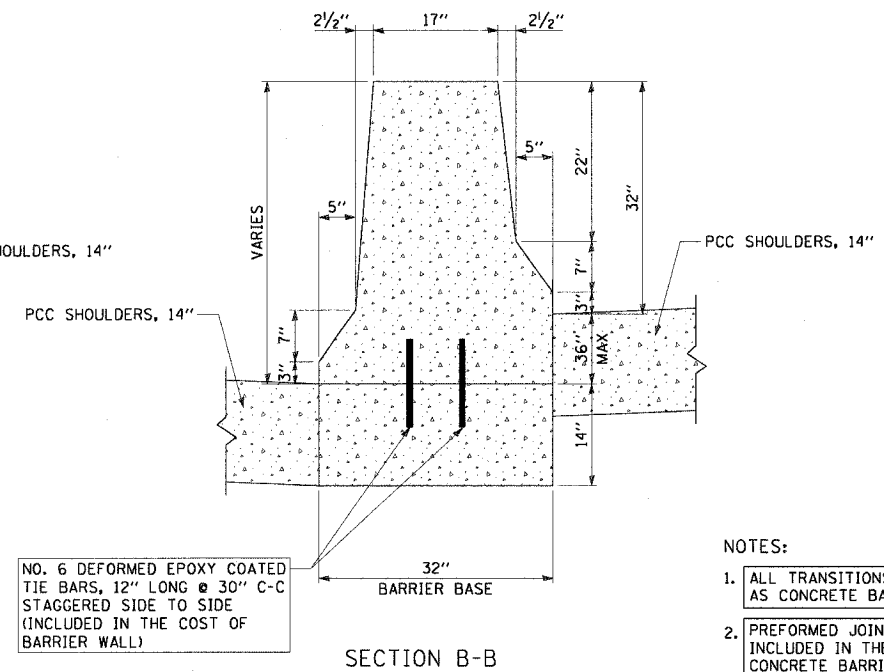
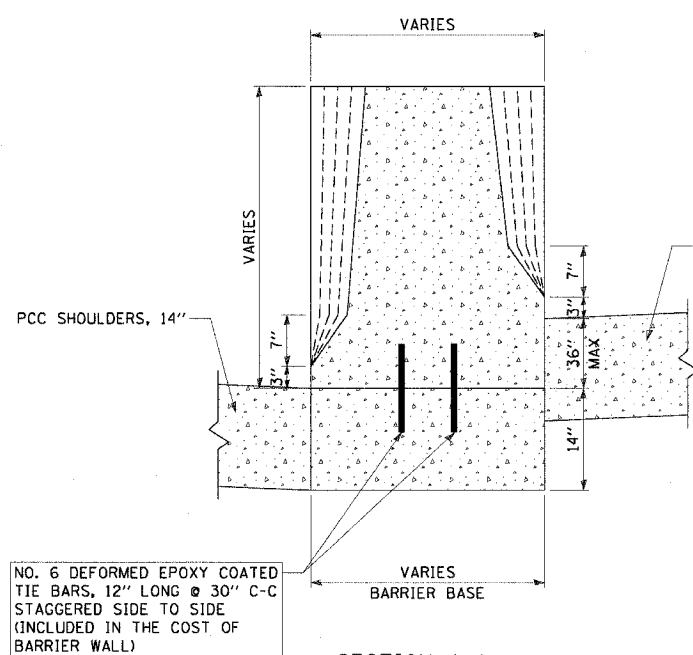
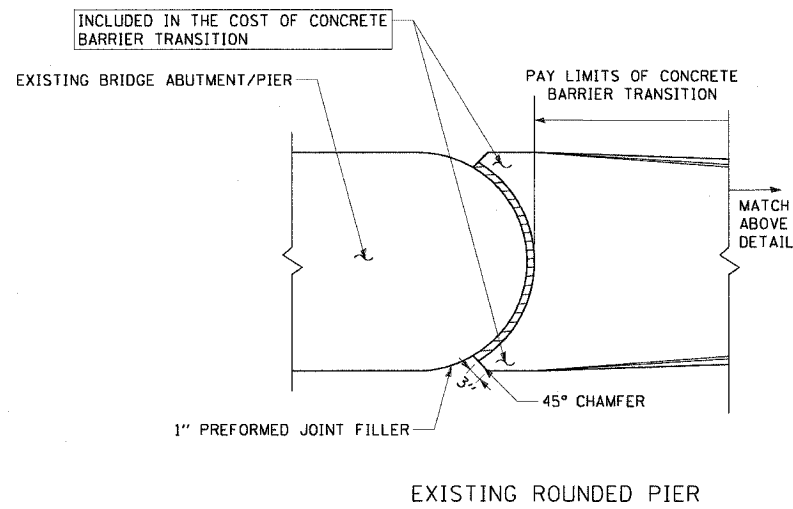


F.A.I. RTE.	SECTION	COUNTY	TOTAL SHEETS	SHEET NO.
90/94	*	COOK	247	166
STA.	TO STA.			
FED. ROAD DIST. NO. 1	ILLINOIS FED. AID PROJECT			
60A63	* (1919.15, 2021-922 PT1 & PT2) R-2			

DOUBLE FACE CONCRETE BARRIER TRANSITION  
N.T.S.



SEE BELOW FOR DETAIL WHEN EXISTING BRIDGE PIER IS ROUNDED



NOTES:

1. ALL TRANSITIONS SHALL BE PAID FOR AS CONCRETE BARRIER TRANSITION
2. PREFORMED JOINT FILLER SHALL BE INCLUDED IN THE COST OF THE CONCRETE BARRIER TRANSITION.

REVISIONS	
NAME	DATE

ILLINOIS DEPARTMENT OF TRANSPORTATION  
F.A.I. 90/94 (DAN RYAN EXPRESSWAY)  
63RD STREET TO GARFIELD BLVD (SB LOCAL LANES)

ROADWAY DETAILS  
DOUBLE FACE CONCRETE BARRIER TRANSITION

SCALE: NONE  
DATE: June 9, 2006

DRAWN BY: NJH  
CHECKED BY: RMC