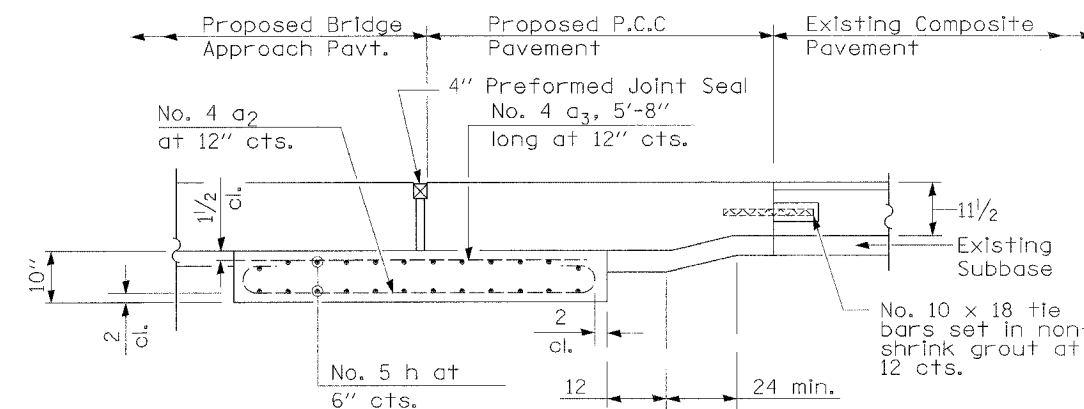
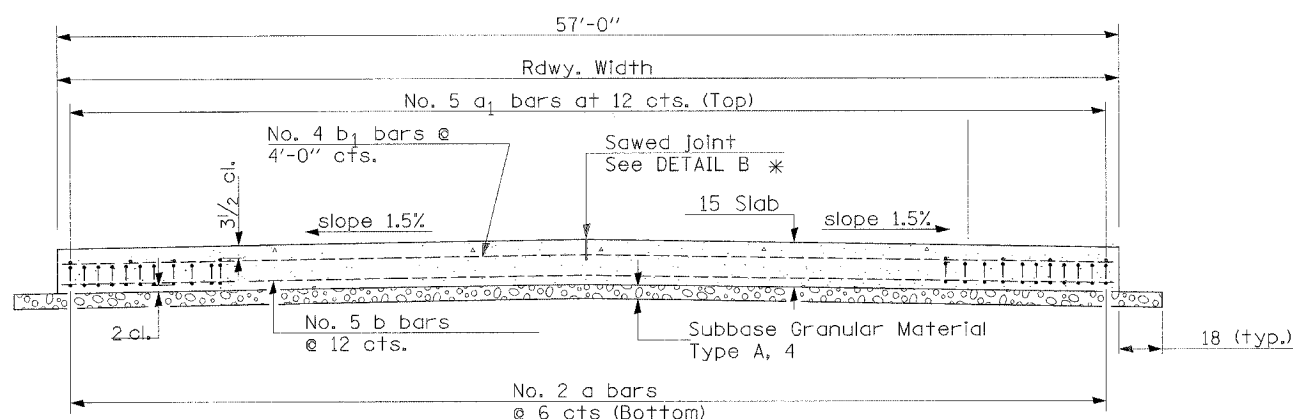


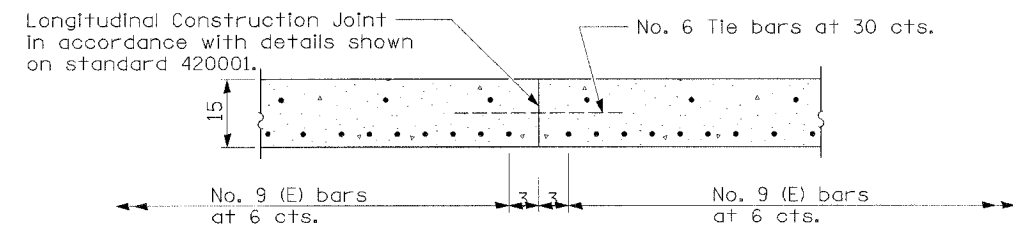
SECTION C-C
 ⓐ Stagger No. 9 a bars as shown on plan - full width



SECTION G-G - RIGID PAVEMENT
 (Showing reinforcement)

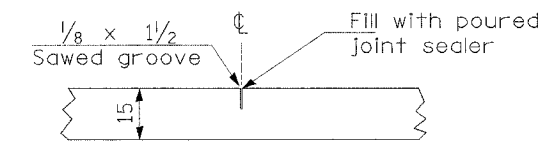


SECTION D-D
 (See Plan for Dimensions not shown)
 All reinforcement bars shall be epoxy coated.

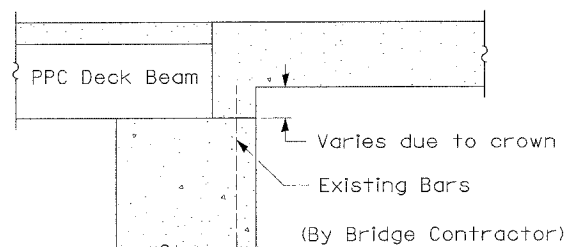


OPTIONAL LONGITUDINAL CONSTRUCTION JOINT

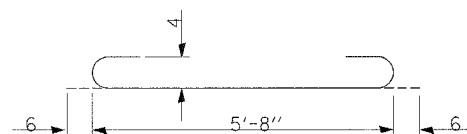
As approved by the Engineer, the Contractor may elect to reduce the widths of pour by use of the Optional Longitudinal Construction Joint shown. Joints shall be located at the edge of a traffic lane.



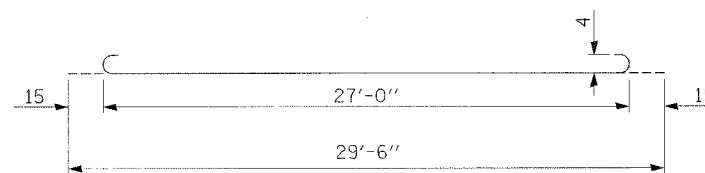
DETAIL B*
 (Reinforcement Not Shown)



SECTION E-E



BAR a2



BAR a

DESIGN STRESSES
 $f_y = 60,000$ p.s.i.
 $f'_c = 3,500$ p.s.i.
 $n = 8.5$

All dimensions are in inches unless otherwise shown.

rjngroup
 Excellence through Ownership
 200 West Front Street
 Wheaton, IL 60187

REVISIONS	
NAME	DATE

ILLINOIS DEPARTMENT OF TRANSPORTATION
 F.A.U. ROUTE 1360 (FOSTER AVENUE)

BRIDGE APPROACH PAVEMENT DETAILS

SCALE: VERT. DRAWN BY: NEC
 HORIZ. CHECKED BY: SPF
 DATE: JUNE 30, 2006

6/29/2006 3:35:38 PM k:\1182519\ccdd\design\182519-App\Part_02.dgn