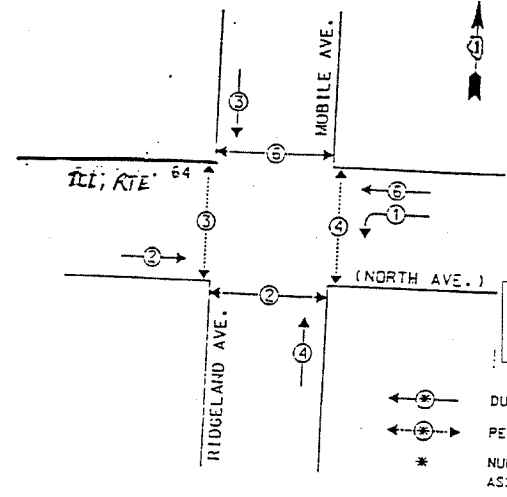


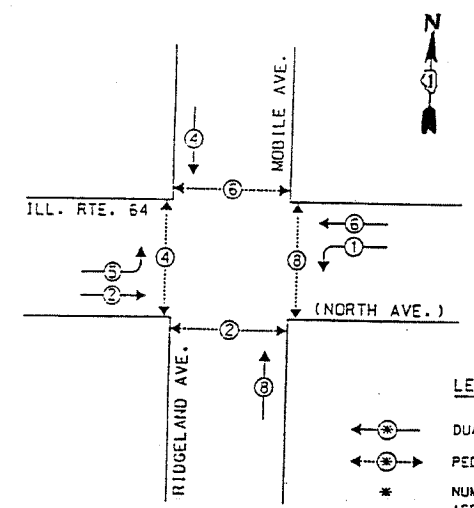
F.A.P. RTE.	SECTION	COUNTY	TOTAL SHEETS	SHEET NO.
344	2006-003 TS	COOK	63	51
STA.		TO STA.		
FED. ROAD DIST. NO.	ILLINOIS	FED. AID PROJECT		
CONTRACT NO. 60B13				

CONTROLLER SEQUENCE



EXISTING PHASE DESIGNATION DIAGRAM

PROPOSED CONTROLLER SEQUENCE



PROPOSED PHASE DESIGNATION DIAGRAM

THE END OF THE TRACER CABLE SHALL BE CONTINUOUS AND EXTEND INTO THE CONTROLLER CABINET.

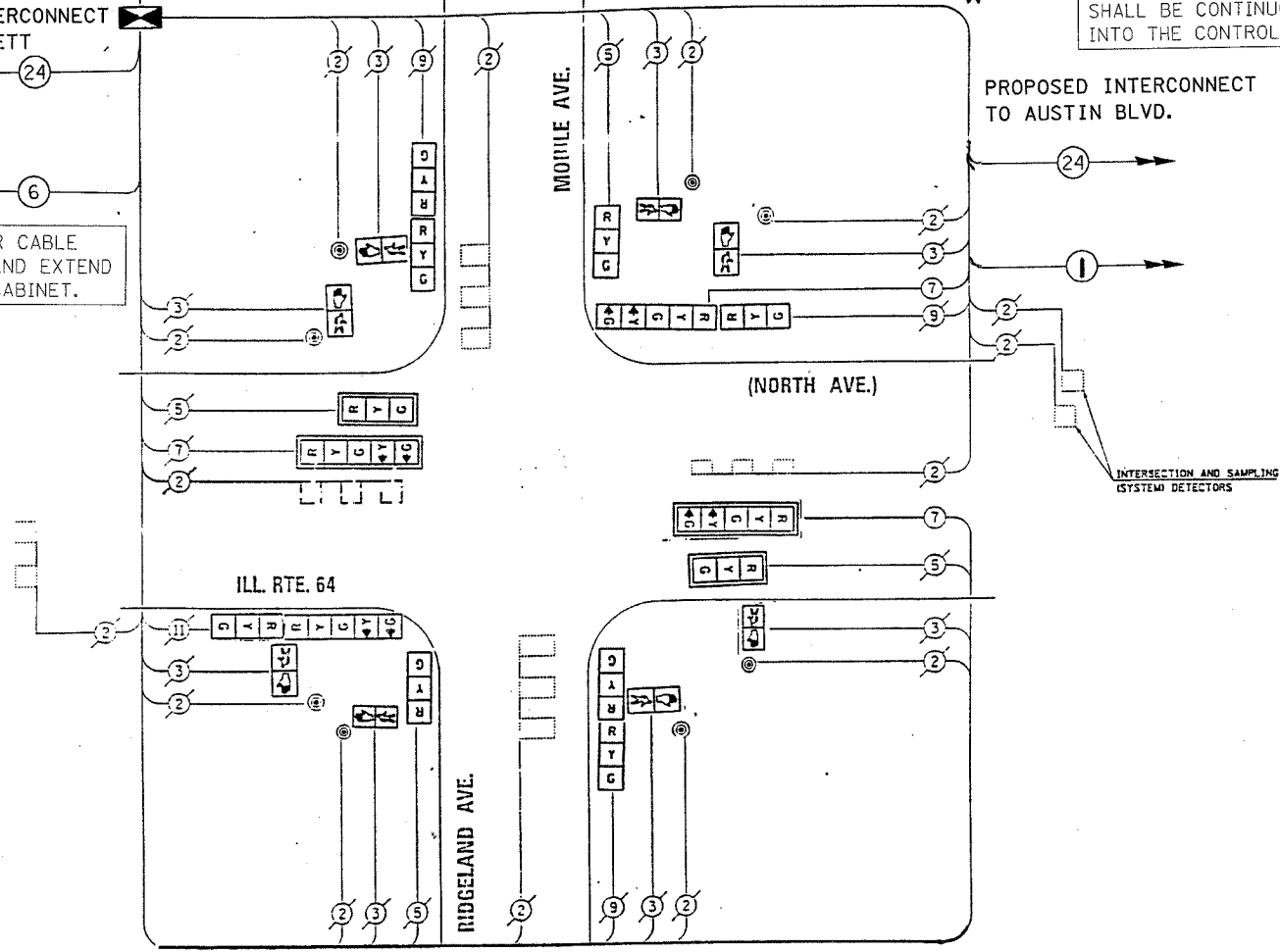
DUAL ENTRY PHASE
PEDESTRIAN PHASE
* NUMBER REFERS TO ASSOCIATED PHASE

LEGEND
DUAL ENTRY PHASE
PEDESTRIAN PHASE
* NUMBER REFERS TO ASSOCIATED PHASE

PROPOSED INTERCONNECT TO NARRAGANSETT

PROPOSED INTERCONNECT TO AUSTIN BLVD.

THE END OF THE TRACER CABLE SHALL BE CONTINUOUS AND EXTEND INTO THE CONTROLLER CABINET.



CABLE PLAN LEGEND

	PROPOSED	EXISTING
CONTROLLER CABINET	[Symbol]	[Symbol]
RAILROAD CONTROL CABINET	[Symbol]	[Symbol]
SERVICE INSTALLATION (P) POLE OR (G) GROUND MOUNT	[Symbol]	[Symbol]
TELEPHONE CONNECTION	[Symbol]	[Symbol]
GROUND ROD AT (C) C (H) HANDHOLE, (P) POST OR (S) SERVICE	[Symbol]	[Symbol]
FIBER OPTIC CABLE IN CONDUIT, NUMBER OF FIBERS AS NOTED	[Symbol]	[Symbol]
ELECTRIC CABLE IN CONDUIT, NO. 14, UNLESS OTHERWISE NOTED, NUMBER OF CONDUCTORS AS NOTED	[Symbol]	[Symbol]
GROUND CABLE IN CONDUIT NO. 6 COPPER (GREEN)	[Symbol]	[Symbol]
SIGNAL FACE WITH BACKPLATE, "P" INDICATES PROGRAMMED HEAD	[Symbol]	[Symbol]
12" (300mm) TRAFFIC SIGNAL SECTION	[Symbol]	[Symbol]
12" (300mm) PEDESTRIAN SIGNAL SECTION	[Symbol]	[Symbol]
ILLUMINATED SIGN "NO LEFT TURN"	[Symbol]	[Symbol]
ILLUMINATED SIGN "NO RIGHT TURN"	[Symbol]	[Symbol]
PUSHBUTTON DETECTOR	[Symbol]	[Symbol]
DETECTOR LOOP	[Symbol]	[Symbol]
PERFORMED DETECTOR LOOP	[Symbol]	[Symbol]
MICROWAVE VEHICLE SENSOR	[Symbol]	[Symbol]
VIDEO DETECTOR	[Symbol]	[Symbol]
CLOSED CIRCUIT TV	[Symbol]	[Symbol]
EMERGENCY VEHICLE SYSTEM DETECTOR	[Symbol]	[Symbol]
CONFIRMATION BEACON	[Symbol]	[Symbol]

SCHEDULE OF QUANTITIES

ITEM	UNIT	QTY.
TRAFFIC CONTROL AND PROTECTION, STANDARD 701501	LSUM	.045
TRAFFIC CONTROL AND PROTECTION, STANDARD 701701	LSUM	.045
TRAFFIC CONTROL AND PROTECTION, STANDARD 701801	LSUM	.045
MAINTENANCE OF EXISTING TRAFFIC SIGNAL INSTALLATION	EACH	1
TRAFFIC SIGNAL POST, GALVANIZED STEEL 14 FT.	EACH	1
SIGNAL HEAD, LED, 1-FACE, 3-SECTION, BRACKET MOUNTED	EACH	2
SIGNAL HEAD, LED, 1-FACE, 3-SECTION, MAST ARM MNTD.	EACH	2
SIGNAL HEAD, LED, 1-FACE, 5-SECTION, MAST ARM MNTD.	EACH	2
SIGNAL HEAD, LED, 2-FACE, 3-SECTION, BRACKET MOUNTED	EACH	2
SIGNAL HEAD, LED, 2-FACE, 1-3 SECTION, 1-5, SECTION BRACKET MOUNTED	EACH	2
PEDESTRIAN PUSH-BUTTON	EACH	8
PEDESTRIAN SIGNAL HEAD, LED, 1-FACE, BRACKET MOUNTED	EACH	8
FULL-ACTUATED CONTROLLER AND TYPE IV CABINET	EACH	1
TRANSCEIVER - FIBER OPTIC	EACH	1
INDUCTIVE LOOP DETECTOR	EACH	7
REMOVE EXISTING TRAFFIC SIGNAL EQUIPMENT	EACH	1
TRAFFIC SIGNAL BACKPLATE, LOUVERED ALUMINUM	EACH	4

I.D.O.T. TRAFFIC SIGNAL INSTALLATION ELECTRICAL SERVICE REQUIREMENTS					TOTAL WATTAGE
TYPE	NO. LAMPS	WATTAGE INCAND.	WATTAGE LED	% OPERATION	
SIGNAL (RED)	14	135	17	0.50	98.00
(YELLOW)	18	135	25	0.25	112.50
(GREEN)	18	135	15	0.25	67.50
ARROW	8	135	12	0.10	9.60
PED. SIGNAL		90	25	1.00	
CONTROLLER		100	100	1.00	
ILLUM. SIGN		84		0.05	

ENERGY COSTS TO: TOTAL = 287.60
 ILLINOIS DEPARTMENT OF TRANSPORTATION
 201 WEST CENTER COURT
 SCHALMBURG, ILLINOIS 60196-1096
 ENERGY SUPPLY CONTACT: LARRY D. SHANK
 PHONE: (847) 291-3214
 COMPANY: COMMONWEALTH EDISON

FOUNDATION (DEPTH)	FT. (m)	CABLE SLACK	FT. (m)	VERTICAL	FT. (m)
TYPE A - POST	4 (1.2)	HANDHOLE	6.5 (2.0)	ALL FOUNDATIONS	3.5 (1.0)
O - CONTROLLER	4 (1.2)	DOUBLE HANDHOLE	13 (4.0)	MAST ARM (L) POLE	20'-H-2' (6m+L-0.6m)
E - M. ARM POLE		SIGNAL POST	2 (1.0)	BRACKET MOUNTED	13 (4.0)
24" (600mm)	10 (3.0)	CONTROLLER CAB.	1 (0.5)	PEDEST. PUSHBUTTON	4 (1.2)
30" (750mm)	15 (4.6)	FIBER OPTIC	13 (4.0)	ELECTRIC SERVICE	13.5 (4.1)
		ELECTRIC SERVICE	1 (0.5)	SERVICE TO GROUND	13.5 (4.1)
		GROUND CABLE	1 (0.5)	POST MOUNTED	6 (1.8)

NOTE: THE TRAFFIC SIGNAL CONTROL EQUIPMENT FOR THIS PROJECT SHALL BE "ECONOLITE" TO MATCH THE EXISTING ADJACENT SYSTEM.

REVISIONS	
NAME	DATE

ILLINOIS DEPARTMENT OF TRANSPORTATION
 CABLE PLAN, PHASE DESIGNATION DIAGRAM, SCHEDULE OF QUANTITIES
 ILL. RTE. 64 (NORTH AVENUE) AND RIDGELAND AVENUE/ MOBILE AVENUE
 SCALE: VERT. NTS
 HORIZ. DATE 6/19/06
 DRAWN BY DESIGNED BY CHECKED BY

3/9/2006 1:48:18 PM c:\p1\105001\101164r\101164r.dgn