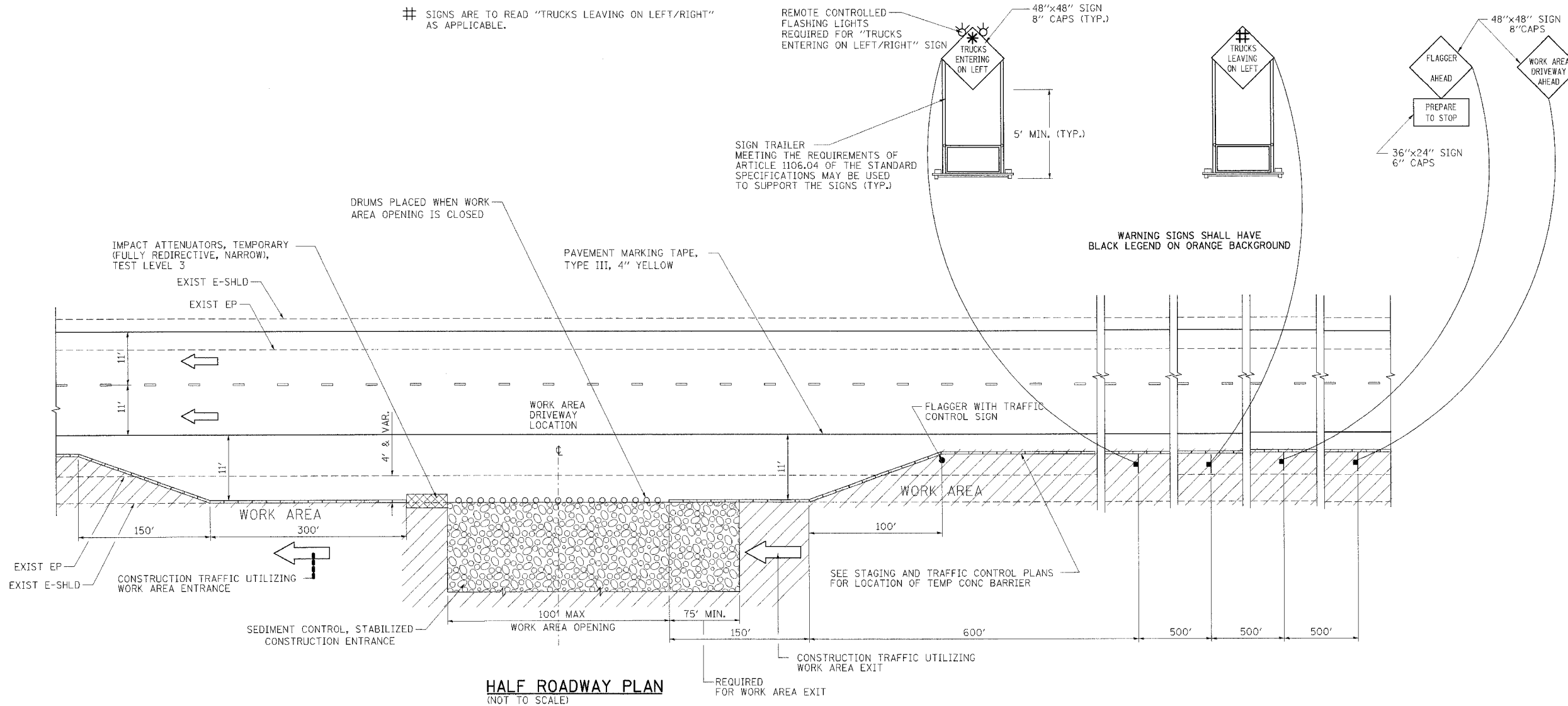


F.A.I. RTE.	SECTION	COUNTY	TOTAL SHEETS	SHEET NO.
55	2006-031	WILL	137	43B
STA.	TO STA.			
FED. ROAD DIST. NO.	ILLINOIS	FED. AID PROJECT		

\* SIGNS ARE TO READ "TRUCKS ENTERING ON LEFT/RIGHT" AS APPLICABLE.  
 # SIGNS ARE TO READ "TRUCKS LEAVING ON LEFT/RIGHT" AS APPLICABLE.



**HALF ROADWAY PLAN**  
(NOT TO SCALE)

**NOTES**

1. THIS DETAIL IS ONLY USED WHEN A SINGLE WORK AREA DRIVEWAY IS USED TO ACCESS AN ISOLATED WORK AREA.
2. THE "FLAGGER AHEAD" AND "TRUCKS ENTERING OR TRUCKS LEAVING ON LEFT/RIGHT" SIGNS SHALL BE COVERED OR TURNED AWAY FROM TRAFFIC WHEN THE FLAGGING OPERATION CEASES.
3. THE FLASHING LIGHTS SHALL MEET THE REQUIREMENTS OF ARTICLE 702.05(g) AND BE OPERATED BY THE FLAGGER REMOTELY. THE LIGHTS SHALL BE FLASHING ONLY WHEN A VEHICLE IS ENTERING THE EXPRESSWAY.
4. THE WORK AREA DRIVEWAY SHALL BE LOCATED A MINIMUM OF 500' FROM ADVANCE WARNING SIGNS FOR DOWNSTREAM WORK AREA OPENINGS AND A MINIMUM OF 2800' FROM UPSTREAM WORK AREA DRIVEWAY LOCATIONS. WORK AREA OPENINGS INTO THE MEDIAN FROM BOTH DIRECTIONS OF TRAFFIC SHALL NOT BE PLACED DIRECTLY ACROSS FROM EACH OTHER. THE WORK AREA OPENING LOCATION SHALL BE APPROVED BY THE ENGINEER.
5. ALL CONSTRUCTION VEHICLES SHALL EXIT THE WORK AREA AT A WORK AREA OPENING.
6. ALL CONSTRUCTION VEHICLES SHALL ENTER THE WORK AREA AT A WORK AREA ENTRANCE OPENING AND SHALL USE THEIR TURN SIGNALS TO WARN MOTORISTS.

7. THE CONTRACTOR SHALL PLACE DRUMS WITH STEADY BURNING MONODIRECTIONAL LIGHTS, SPACED AT 10' CENTERS, ACROSS THE WORK AREA OPENING WHEN THE WORK AREA OPENING IS CLOSED. THE COSTS OF INSTALLING, MAINTAINING AND REMOVING THESE DRUMS AND SIGNS SHALL BE INCLUDED IN THE UNIT PRICE BID FOR "TRAFFIC CONTROL AND PROTECTION (EXPRESSWAYS)".
8. A FLAGGER IS REQUIRED AT ALL TIMES UNLESS THE WORK AREA OPENING IS CLOSED. THE COST OF THE FLAGGER WILL NOT BE PAID FOR SEPARATELY, BUT SHALL BE INCLUDED IN THE UNIT PRICE BID FOR "TRAFFIC CONTROL AND PROTECTION (EXPRESSWAYS)".
9. SEE STAGING AND TRAFFIC CONTROL DETAIL FOR STABILIZED CONSTRUCTION ENTRANCE.

**LEGEND:**

- FLAGGER WITH TRAFFIC CONTROL SIGN
- ← DIRECTION OF TRAFFIC
- SIGN ON SUPPORT
- DRUM W/ MONODIRECTIONAL STEADY BURN LIGHT
- TBT = TRAFFIC BARRIER TERMINAL
- TCB = TEMPORARY CONCRETE BARRIER
- ▨ WORK AREA
- ▩ IMPACT ATTENUATOR

REVISIONS	
NAME	DATE
AG	9/1/06

ILLINOIS DEPARTMENT OF TRANSPORTATION  
 (FAI ROUTE 55 OVER CSX RR AND SUNNYLAND DRAIN)  
 BRIDGE WIDENING  
**STAGING AND TRAFFIC CONTROL  
 DETAIL FOR ISOLATED WORK AREA  
 DRIVEWAY ENTRANCE/EXIT**

SCALE: N.T.S. DRAWN BY SEB  
 DATE 09/01/06 CHECKED BY DDH

**TENG**  
 TENG & ASSOCIATES, INC.  
 ENGINEERS/ARCHITECTS/PLANNERS  
 CHICAGO, ILLINOIS

PLOT DATE = 09/01/06 FILE NAME = I:\FILES\60885\60885.DWG USER = MUSEYV  
 S:\DOCUMENTS\60885\60885.DWG USER = MUSEYV  
 9/01/06 10:59:34 GARCIAAZ