

F.A.I. RTE.	SECTION	COUNTY	TOTAL SHEETS	SHEET NO.
55	2006-031 BY	WILL	137	2
STA.		TO STA.		
FED. ROAD DIST. NO.		ILLINOIS	FED. AID PROJECT	

INDEX OF SHEETS

SHEET NO.	DESCRIPTION
1	COVER SHEET
2	INDEX OF SHEETS, STATE STANDARDS & GENERAL NOTES
3 - 6	SUMMARY OF QUANTITIES
7-7A	TYPICAL SECTIONS
8-8E	SCHEDULE OF QUANTITIES
9 - 14	HORIZONTAL ALIGNMENTS, TIES AND BENCHMARKS
15 - 23	ROADWAY PLANS & ROADWAY PROFILES
24 - 26B	ROADWAY DETAILS
27 - 33	SOIL BORING LOCATION PLANS AND SOIL PROFILES
34 - 43	STAGING AND TRAFFIC CONTROL PLANS
43A-43B	STAGING AND TRAFFIC CONTROL DETAILS
44 - 47	EROSION AND SEDIMENT CONTROL PLANS
48	EROSION AND SEDIMENT CONTROL DETAILS
49 - 52	DRAINAGE AND UTILITY PLANS
53 - 54	DRAINAGE SCHEDULES
55 - 56	DRAINAGE PROFILES
57 - 60	SUB-SURFACE UTILITY ENGINEERING PLANS
61 - 63	PAVEMENT MARKING & LANDSCAPING PLANS
64 - 85	SB I-55 OVER CSX RAILROAD BRIDGE S.N. 099-0312
86 - 98	NB & SB I-55 OVER SUNNYLAND DRAIN S.N. 099-0014 & 099-0015
99 - 106	DISTRICT ONE DETAILS
107 - 137	CROSS SECTIONS

LIST OF STATE STANDARDS

STD. NO.	DESCRIPTION
000001-04	STANDARD SYMBOLS, ABBREVIATIONS, AND PATTERNS
001006	DECIMAL OF AN INCH AND OF A FOOT
280001-02	TEMPORARY EROSION CONTROL SYSTEMS
420001-06	PAVEMENT JOINTS
420401-05	BRIDGE APPROACH PAVEMENT
421001-01	BAR REINFORCEMENT FOR CRC PAVEMENT
421206-04	10.8 M (36') CRC PAVEMENT
442201-01	CLASS C AND D PATCHES
483001-02	PCC SHOULDER
515001-02	NAME PLATE FOR BRIDGES
542101	REINFORCED CONCRETE END SECTIONS FOR PIPE CULVERTS, 375 MM (15") THRU 900 MM (36") DIAMETER AT RIGHT ANGLES WITH ROADWAY
542106	REINFORCED CONCRETE END SECTIONS FOR PIPE CULVERTS, 1050 mm (42") THRU 1500 mm (60") DIA. AT RIGHT ANGLES WITH ROADWAY
542301	PRECAST REINFORCED CONCRETE FLARED END SECTION
545526	INLET BOX TYPE F 600mm (24")
601001	SUB-SURFACE DRAINS
601101	CONCRETE HEADWALL FOR PIPE DRAIN
602001	CATCH BASIN, TYPE A
602401-01	MANHOLE, TYPE A
602406-02	MANHOLE, TYPE A 72" DIAMETER
602601	PRECAST REINFORCED CONCRETE FLAT SLAB TOP
604001-02	FRAME AND LIDS TYPE 1
604036-01	GRATE TYPE 8
606401	PAVED DITCH
609006-02	BRIDGE APPROACH PAVEMENT (DRAIN DETAIL)
630001-06	STEEL PLATE BEAM GUARDRAIL
630201-03	PCC/BITUMINOUS STABILIZATION AT STEEL PLATE BEAM GUARDRAIL
630301-03	SHOULDER WIDENING FOR TYPE I GUARDRAIL TERMINALS
631011-02	TRAFFIC BARRIER TERMINAL, TYPE 2
631026-02	TRAFFIC BARRIER TERMINAL, TYPE 5-5A
631031-05	TRAFFIC BARRIER TERMINAL, TYPE 6
635001	DELINEATORS
635006-02	REFLECTOR AND TERMINAL MARKER PLACEMENT
635011-01	REFLECTOR MARKER AND MOUNTING DETAILS
637006	CONCRETE BARRIER, DOUBLE FACE, 1065mm (42 IN.) HEIGHT
642001	SHOULDER RUMBLE STRIP
701101-01	OFF-ROAD OPERATIONS, MULTILANE LESS THAN 4.5M AWAY FOR SPEEDS > OR = 45 MPH
701106-01	OFF-ROAD OPERATIONS, MULTILANE, MORE THAN 4.5M (15') AWAY
701201-02	LANE CLOSURE, 2L, 2W, DAY ONLY, FOR SPEEDS > 45 MPH
701400-02	APPROACH TO LANE CLOSURE, FREEWAY/EXPRESSWAY
701401-03	LANE CLOSURE, FREEWAY/EXPRESSWAY
701402-05	LANE CLOSURE, FREEWAY/EXPRESSWAY, WITH BARRIER
701411-03	LANE CLOSURE, MULTILANE AT ENTRANCE OR EXIT RAMP FOR SPEEDS > OR = 45 MPH
701446	TWO LANE CLOSURE FREEWAY/EXPRESSWAY
702001-06	TRAFFIC CONTROL DEVICES
704001-02	TEMPORARY CONCRETE BARRIER

DRAINAGE NOTES

- THE STATION AND OFFSET OF ALL DRAINAGE STRUCTURES ARE TO THE CENTER OF THE FRAME.
- INVERT ELEVATIONS FOR EXISTING PIPES HAVE BEEN SHOWN ON THE PLANS WHEN SURVEY INFORMATION WAS AVAILABLE. INVERT ELEVATIONS FOR EXISTING PIPES SHOULD BE VERIFIED IN THE FIELD AT THE TIME OF CONSTRUCTION.
- FOR INSTALLATION OF PROPOSED DRAINAGE STRUCTURES IN EXISTING SEWERS A PORTION OF THE EXISTING PIPE SHALL BE CUT AND REMOVED. THE PROPOSED STRUCTURE SHALL BE PROVIDED WITH ADEQUATELY SIZED OPENINGS SUCH THAT THE EXISTING PIPE MAY BE CONNECTED AT ITS EXISTING INVERT ELEVATIONS. THE COST OF THIS WORK WILL NOT BE PAID FOR SEPARATELY, BUT SHALL BE INCLUDED IN THE CONTRACT UNIT PRICE EACH FOR THE TYPE AND KIND OF DRAINAGE STRUCTURE TO BE INSTALLED.
- IN ADDITION TO THE REQUIREMENTS OF ARTICLE 602.15 OF THE STANDARD SPECIFICATIONS, THE CONTRACT UNIT PRICE FOR THE DRAINAGE STRUCTURE SHALL INCLUDE THE SAND CUSHION, FURNISHING AND INSTALLING STEPS WHEN REQUIRED, ADJUSTING RINGS OR CONCRETE BLOCKS WHEN REQUIRED AND FURNISHING AND COMPACTING THE SPECIFIED BACKFILL MATERIAL.
- FOR PROPOSED STORM SEWER OR PIPE CULVERT CONNECTIONS TO EXISTING PIPES, BOX CULVERTS, OR STRUCTURES, THE CONNECTION AND REMOVAL OF CONCRETE TO MAKE NECESSARY HOLES IN THE EXISTING PIPES, EXISTING BOX CULVERTS, OR EXISTING STRUCTURES WILL NOT BE PAID FOR SEPARATELY, BUT SHALL BE INCLUDED IN THE CONTRACT UNIT PRICE PER FOOT FOR STORM SEWERS OR PIPE CULVERTS OF THE DIAMETER, TYPE, AND CLASS SPECIFIED, AND OF THE PARTICULAR KIND OF MATERIAL WHEN SPECIFIED.
- REMOVAL OF MANHOLES, CATCH BASINS AND ANY OTHER EXISTING DRAINAGE STRUCTURES IN THE EXISTING MEDIAN DITCH OF I-55 OR ELSEWHERE ON THE I-55 EXPRESSWAY, SHALL BE REMOVED IN ACCORDANCE WITH THE APPLICABLE PORTIONS OF SECTION 605 OF THE STANDARD SPECIFICATIONS AND WILL BE PAID FOR AT THE CONTRACT UNIT PRICE EACH FOR "REMOVING MANHOLES", REGARDLESS OF SHAPE, DEPTH OR SIZE OF THE STRUCTURE, EXCEPT FOR MEDIAN INLET BOXES AND INLET BOXES IN BRIDGE APPROACH PAVEMENT, WHICH WILL BE PAID SEPARATELY AS "MEDIAN INLET BOX REMOVAL" AND "REMOVE INLET BOX" RESPECTIVELY. REMOVAL OF EXISTING UNDERDRAINS AND HEADWALLS FOR UNDERDRAINS WILL NOT BE PAID FOR SEPARATELY, BUT SHALL BE INCLUDED IN THE CONTRACT UNIT PRICE PER CU. YD. FOR EARTH EXCAVATION.
- TOP OF GRATE ELEVATIONS FOR EXISTING STRUCTURES SHOWN ON THE PLANS WERE DETERMINED BY COMPUTER TERRAIN MODELING. THE RESIDENT ENGINEER MAY REVISE THE TOP OF GRATE ELEVATIONS AT THE TIME OF CONSTRUCTION BASED ON FIELD CONDITIONS.
- WHEN PIPE CULVERTS ARE TO BE GROUTED, THE COST OF GROUTING END SECTIONS SHALL BE INCLUDED IN THE CONTRACT UNIT PRICE PER FOOT FOR "PIPE CULVERTS TO BE GROUTED", UNLESS OTHERWISE SPECIFIED ON THE PLANS.
- WHEN A PIPE LATERAL IS REMOVED FROM AN EXISTING STORM SEWER, THE COST OF PATCHING THE EXISTING STORM SEWER SHALL BE INCLUDED IN THE CONTRACT UNIT PRICE FOR "PIPE CULVERT REMOVAL".
- THE REMOVAL OF END SECTIONS ON PIPE CULVERTS SHALL BE IN ACCORDANCE WITH THE APPLICABLE PORTIONS OF SECTION 501 OF THE STANDARD SPECIFICATIONS AND WILL BE MEASURED IN PLACE ALONG THE FLOWLINE OF THE CULVERT END SECTION IN FEET AND PAID FOR AS "PIPE CULVERT REMOVAL."

GENERAL NOTES

- BEFORE STARTING ANY EXCAVATION, THE CONTRACTOR SHALL CALL "JULIE" AT 800-892-0123 FOR FIELD LOCATIONS OF BURIED ELECTRIC, TELEPHONE AND GAS FACILITIES. (48 HOURS NOTIFICATION REQUIRED).
- THE CONTRACTOR SHALL COORDINATE CONSTRUCTION ACTIVITIES WITH AFFECTED UTILITY COMPANIES AND MUNICIPALITIES.
- THE CONTRACTOR WILL NOT BE ALLOWED TO SET UP A YARD OR FIELD OFFICE ON STATE PROPERTY WITHOUT WRITTEN PERMISSION FROM THE DEPARTMENT.
- BARRICADES: THE CONTRACTOR SHALL PROVIDE AND INSTALL TWO (2) WEIGHTED SAND BAGS ON EACH TYPE I OR TYPE II BARRICADE USED AND ONE (1) WEIGHTED SAND BAG ACROSS EACH BOTTOM RAIL.
- WHEN ARTIFICIAL LIGHTING IS USED IN NIGHT OPERATIONS THE CONTRACTOR SHALL EXERCISE THE UTMOST PRECAUTIONS IN PREVENTING ADVERSE VISIBILITY TO THE MOTORING PUBLIC AND ADJOINING COMMERCIAL AND RESIDENTIAL AREAS.
- BARRIER WALL MARKERS, TYPE C SHALL BE INSTALLED ON CONCRETE BARRIER WALL AND PARAPETS AT A HEIGHT OF 28 INCHES FROM THE TOP OF SHOULDER TO THE BOTTOM OF THE REFLECTOR AND SPACED AT 50 FEET CENTER-TO-CENTER ON CURVES AND 100 FEET CENTER-TO-CENTER ON TANGENTS OR AS DIRECTED BY THE TRAFFIC OPERATIONS FIELD ENGINEER.
- SINCE THIS IS AN EXPRESSWAY FACILITY, THE CONTRACTOR MAY HAVE CREWS WORKING IN THE NORTHBOUND AND SOUTHBOUND DIRECTIONS AT THE SAME TIME.
- ANY GUARDRAIL REMOVED AND DEEMED SALVAGEABLE BY THE RESIDENT ENGINEER SHALL BE DELIVERED BY THE CONTRACTOR TO THE NEAREST IDOT MAINTENANCE FACILITY. TEMPORARY STORAGE AND DELIVERY SHALL BE INCLUDED IN THE CONTRACT UNIT PRICE FOR "GUARDRAIL REMOVAL".
- IN AREAS BEYOND THE PAVEMENT MILLING AND RESURFACING LIMITS, THE CONTRACTOR SHALL REMOVE THE REFLECTIVE ELEMENT FROM ALL RAISED REFLECTIVE PAVEMENT MARKERS THAT CONFLICT WITH THE TEMPORARY TRAFFIC LANES AS DIRECTED BY THE ENGINEER. THE CONTRACTOR SHALL REPLACE THE REFLECTIVE ELEMENT WITH A NEW REFLECTIVE ELEMENT AT THE END OF THE PROJECT. THE COST OF REMOVAL AND REPLACEMENT OF THE REFLECTIVE ELEMENT SHALL BE INCLUDED IN THE CONTRACT UNIT PRICE FOR "REPLACEMENT REFLECTOR."

LIST OF DISTRICT ONE DETAILS (INCLUDED AS PLAN SHEETS 99-106)

STD. NO.	DESCRIPTION
BD37	MANHOLE TYPE A, 7 FOOT DIAMETER
BD51	BENCHING DETAIL FOR EMBANKMENT WIDENING
TC09	TRAFFIC CONTROL DETAILS FOR FREEWAY SINGLE LANE OR MULTILANE WEAVE
TC11	RAISED REFLECTIVE PAVEMENT MARKERS (SNOW PLOW RESISTANT)
TC12	MULTI-LANE FREEWAY PAVEMENT MARKING
TC17	TRAFFIC CONTROL FOR SHOULDER CLOSURES AND PARTIAL RAMP CLOSURES
TC18	SIGNING FOR FLAGGING OPERATIONS AT WORK ZONE OPENINGS

REVISIONS	
NAME	DATE

ILLINOIS DEPARTMENT OF TRANSPORTATION  
 FAI ROUTE 55 (OVER CSX RR AND SUNNYLAND DRAIN)  
 BRIDGE WIDENING

**INDEX OF SHEETS,  
 STATE STANDARDS,  
 & GENERAL NOTES**

SCALE: N.T.S. DRAWN BY AG  
 DATE 07/21/06 CHECKED BY DDH

**TENG**  
 TENG & ASSOCIATES, INC.  
 ENGINEERS/ARCHITECTS/PLANNERS  
 CHICAGO, ILLINOIS

Rev. 9-1-06

Rev.

PLT DATE = 07/21/06  
 FILE NAME = 072106.DWG  
 USER NAME = MURPHY

S:\DOCUMENT\072106\01\CIVIL\CON\IS91\AR01.SHT

7-19-2006, 13:45:46

F.A.I. RTE.	SECTION	COUNTY	TOTAL SHEETS	SHEET NO.
55	2006-031 BY	WILL	137	5
STA.		TO STA.		
FED. ROAD DIST. NO.	ILLINOIS	FED. AID PROJECT		

URBAN  
100% STATE

CODE NO.	ITEM	UNIT	TOTAL QUANTITY	1000-2A	CSXRR	SUNNYLAND DRAIN	IL 59	SFTY-2A	SFTY-3N
* 63100070	TRAFFIC BARRIER TERMINAL, TYPE 5	EACH	1	1					
* 63100085	TRAFFIC BARRIER TERMINAL, TYPE 6	EACH	2	2					
* 63100167	TRAFFIC BARRIER TERMINAL TYPE 1, SPECIAL (TANGENT)	EACH	1	1					
63200310	GUARDRAIL REMOVAL	FOOT	699	699					
63300800	GUARD RAIL POST VERTICAL ADJUSTMENT	EACH	5	5					
64200105	SHOULDER RUMBLE STRIP	FOOT	987	987					
<del>67000600</del>	<del>ENGINEER'S FIELD LABORATORY</del>	<del>CAL MO</del>	<del>12</del>	<del>12</del>					
67001000	MOBILIZATION	L SUM	1	1					
70300520	PAVEMENT MARKING TAPE, TYPE III 4"	FOOT	39998	39998					
70300530	PAVEMENT MARKING TAPE, TYPE III 5"	FOOT	4786	4786					
70301000	WORK ZONE PAVEMENT MARKING REMOVAL	SQ FT	15313	15313					
70400100	TEMPORARY CONCRETE BARRIER	FOOT	7488	7488					
70400200	RELOCATE TEMPORARY CONCRETE BARRIER	FOOT	467	467					
* 78000200	THERMOPLASTIC PAVEMENT MARKING - LINE 4"	FOOT	12921	12921					
* 78000500	THERMOPLASTIC PAVEMENT MARKING - LINE 8"	FOOT	1742	1742					
* 78000600	THERMOPLASTIC PAVEMENT MARKING - LINE 12"	FOOT	466	466					
* 78003110	PREFORMED PLASTIC PAVEMENT MARKING, TYPE B - LINE 4"	FOOT	103	103					
* 78003120	PREFORMED PLASTIC PAVEMENT MARKING, TYPE B - LINE 5"	FOOT	1596	1596					
* 78008210	POLYUREA PAVEMENT MARKING TYPE I - LINE 4"	FOOT	14505	14505					
* 78008220	POLYUREA PAVEMENT MARKING TYPE I - LINE 5"	FOOT	1803	1803					
* 78008250	POLYUREA PAVEMENT MARKING TYPE I - LINE 12"	FOOT	583	583					
* 78100105	RAISED REFLECTIVE PAVEMENT MARKER (BRIDGE)	EACH	6	6					
* 78100300	REPLACEMENT REFLECTOR	EACH	382	382					
* 78200100	MONODIRECTIONAL PRISMATIC BARRIER REFLECTOR	EACH	1500	1500					
* 78200410	GUARDRAIL MARKERS, TYPE A	EACH	27	27					
* 78200530	BARRIER WALL MARKERS, TYPE C	EACH	4	4					
* 78201000	TERMINAL MARKER - DIRECT APPLIED	EACH	1	1					
* 78300100	PAVEMENT MARKING REMOVAL	SQ FT	12396	12396					
* 81200120	CONDUIT EMBEDDED IN STRUCTURE, 2" DIA., GALVANIZED STEEL	FOOT	453		406	47			
X0322066	PROTECTIVE SHIELD (PERMANENT)	SQ YD	527				527		
X0322256	TEMPORARY INFORMATION SIGNING	SQ FT	340	340					
X0322323	WEED CONTROL, TEASEL	GALLON	2.5	2.5					
X0323426	SEDIMENT CONTROL, DRAINAGE STRUCTURE INLET FILTER CLEANING	EACH	6	6					
X0323973	SEDIMENT CONTROL, SILT FENCE	FOOT	475	475					
X0323974	SEDIMENT CONTROL, SILT FENCE MAINTENANCE	FOOT	475	475					
X0323988	TEMPORARY SOIL RETENTION SYSTEM	SQ FT	2251		1249	1002			
X0324045	SEDIMENT CONTROL, STABILIZED CONSTRUCTION ENTRANCE REMOVAL	EACH	3	3					
X0324774	SEDIMENT CONTROL, STABILIZED CONSTRUCTION ENTRANCE	SQ YD	699	699					
X0324775	SEDIMENT CONTROL, STABILIZED CONSTRUCTION ENTRANCE MAINTENANCE	SQ YD	699	699					
X3120700	STABILIZED SUB-BASE 4, SUPERPAVE	SQ YD	12035	12035					
X4066426	BITUMINOUS CONCRETE SURFACE COURSE, SUPERPAVE, MIX "D", N70	TON	93	93					
X4066616	BITUMINOUS CONCRETE BINDER COURSE, SUPERPAVE, IL-19.0, N70	TON	93	93					
X4073161	BITUMINOUS CONCRETE PAVEMENT (FULL-DEPTH), SUPERPAVE, 14"	SQ YD	300	300					
X6370940	CONCRETE BARRIER, DOUBLE FACE, 42 INCH HEIGHT	FOOT	23	23					
X6700410	ENGINEER'S FIELD OFFICE, TYPE A (SPECIAL)	CAL MO	12	12					
X7011015	TRAFFIC CONTROL AND PROTECTION (EXPRESSWAYS)	L SUM	1	1					
X7013820	TRAFFIC CONTROL SURVEILLANCE, EXPRESSWAYS	CAL DA	274	274					

\* SPECIALTY ITEMS

REVISIONS	
NAME	DATE

ILLINOIS DEPARTMENT OF TRANSPORTATION  
FAI ROUTE 55 (OVER CSX RR AND SUNNYLAND DRAIN)  
BRIDGE WIDENING

SUMMARY OF QUANTITIES  
III

SCALE: N.T.S.  
DATE 07/21/06

DRAWN BY AG  
CHECKED BY DDH

TENG

TENG & ASSOCIATES, INC.  
ENGINEERS/ARCHITECTS/PLANNERS  
CHICAGO, ILLINOIS

Rev. 9-1-06

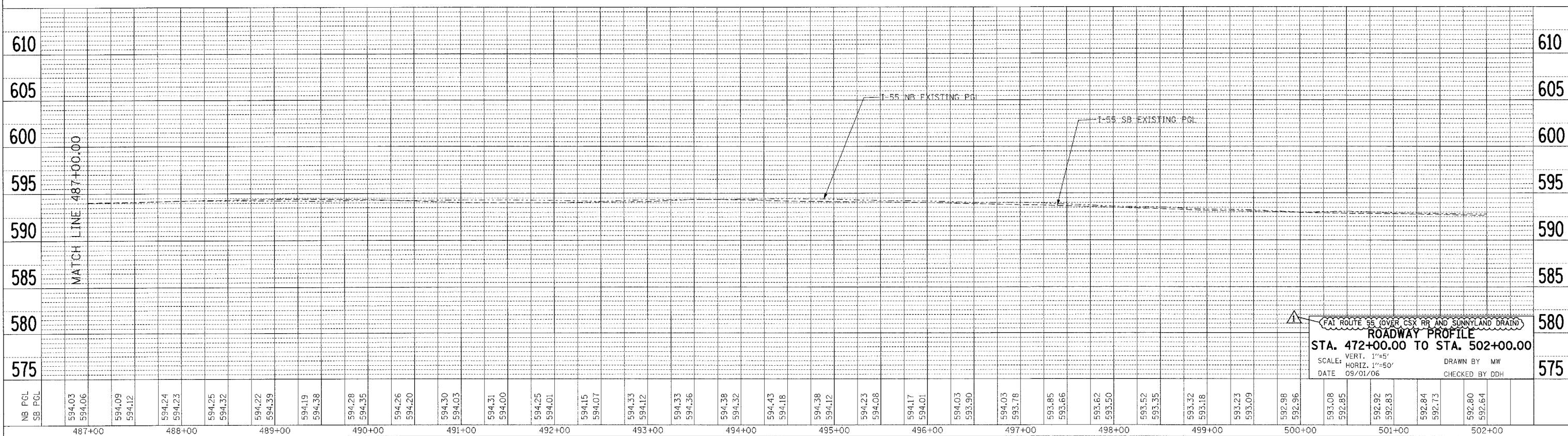
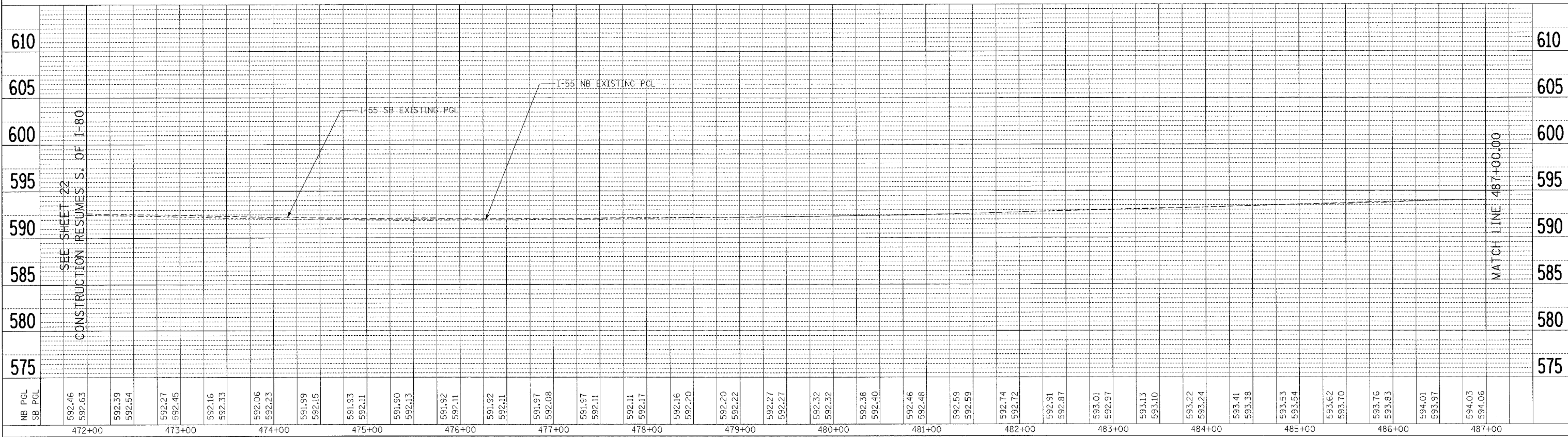
DATE = 07/21/06  
DRAWN BY = AG  
CHECKED BY = DDH  
PLOT DATE = 07/21/06  
PLOT NAME = 7-19-2006-13-6082  
USER NAME = JUSER18  
S:\DOCUMENT\02\3015\1\CL\1\LDN\GD001\0203.SHT

F.A. RTE.	SECTION	COUNTY	TOTAL SHEETS	SHEET NO.
55	2006-031 BY	WILL	137	23
STA.		TO STA.		
FED. ROAD DIST. NO.		ILLINOIS FED. AID PROJECT		

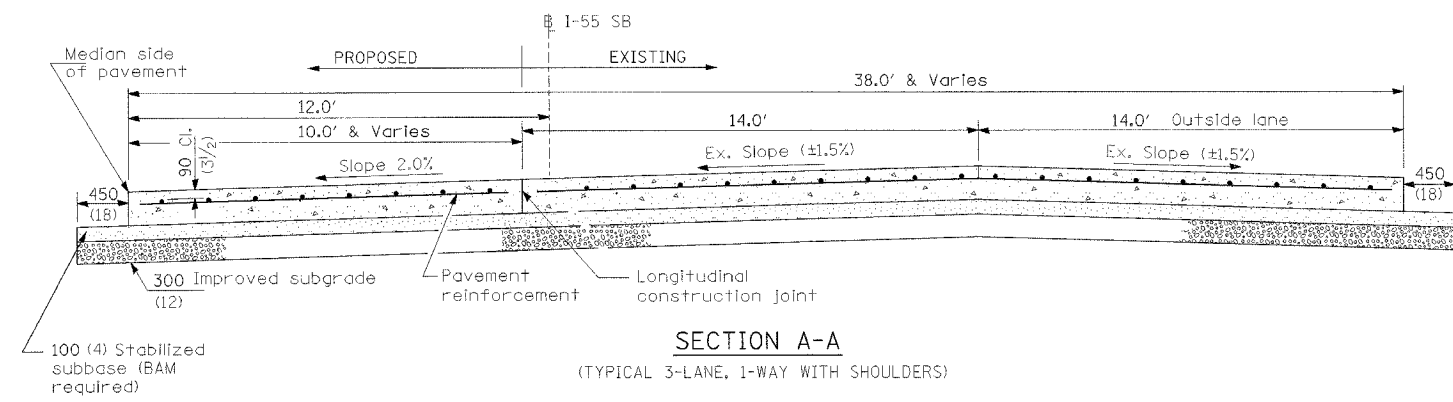
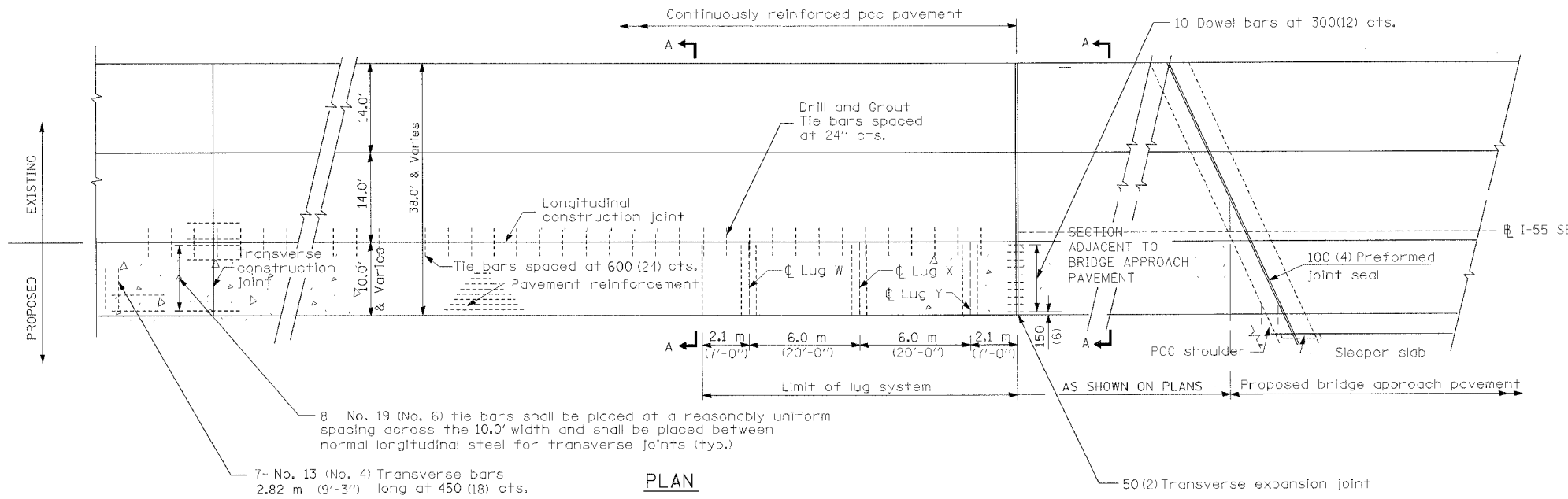
PLAIN	SURVEYED	BY	DATE
NOTE BOOK	ALIGNED CHECKED		
NO.	RT. OF WAY CHECKED		
	PROJ. FILE NAME		

PROFILE	SURVEYED	BY	DATE
NOTE BOOK	GRADES CHECKED		
NO.	STRUCTURE NOTATIONS CHECKED		

PLOT DATE = #DATE#  
 FILE NAME = #FILE#  
 PLOT SCALE = #SCALE#  
 USER NAME = #USER#



F.A.I. RTE.	SECTION	COUNTY	TOTAL SHEETS	SHEET NO.
55	2006-031 BY	WILL	137	26A
STA. TO STA.		FED. ROAD DIST. NO. ILLINOIS FED. AID PROJECT		



NOTES

- SEE ROADWAY PLAN 16 FOR LOCATION OF LUG SYSTEM COMPL 10.
- SEE STANDARD 421206 FOR DETAILS NOT SHOWN.
- SEE STANDARD 421001 FOR DETAILS OF PAVEMENT REINFORCEMENT.
- SEE STANDARDS 420001 AND 420401 FOR JOINT DETAILS NOT SHOWN.
- ALL DIMENSIONS ARE IN MILLIMETERS (INCHES) UNLESS OTHERWISE SHOWN.
- THE REINFORCING SHALL BE PLACED PARALLEL TO THE BASELINE IN TAPER AREAS.
- CRC REINFORCEMENT CHART ON STANDARD 421001 SHALL BE MODIFIED AS FOLLOWS:

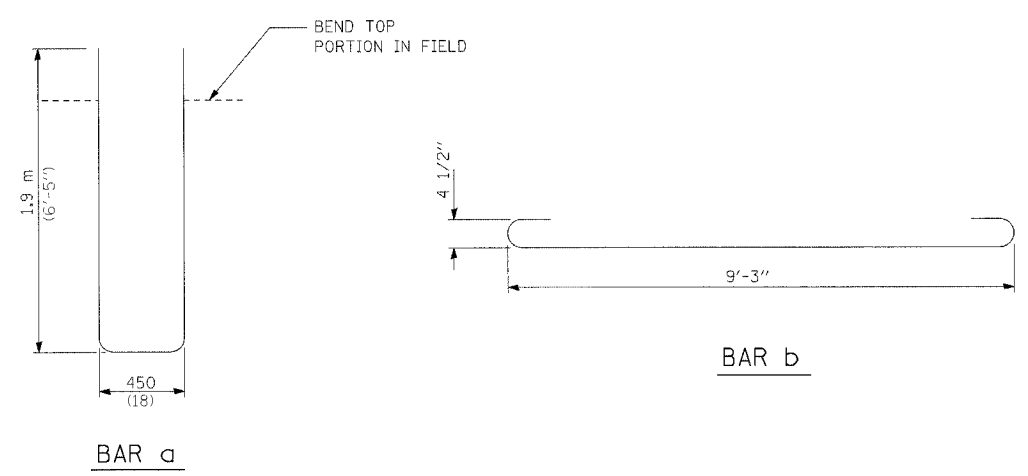
BAR SIZE	PAVEMENT WIDTH	A (Approx. Spacing)	B	C	D
#6	9'-8" (VARIES FROM 9'-7" TO 9'-10")	19 SPACES (20 BARS @ 5 3/4")	3 1/2"	3"	22"
#7	9'-8" (VARIES FROM 9'-7" TO 9'-10")	15 SPACES (16 BARS @ 7 3/8")	3 1/2"	3"	26"

\* CUT TRANSVERSE BARS FOR 9'-8" PAVEMENT WIDTH

MATERIALS REQUIRED FOR (1) ONE LUG SYSTEM  
(Excluding Pavement Concrete and Pavement Reinforcement)

Bar	No.	Size	Length	Shape
a	54	No. 8	14'-0"	
b	18	No. 5	10'-6"	
c	54	No. 5	20'-0"	
d	14	No. 4	9'-6"	

Concrete, (cu. yds.)	8.7
Reinforcing Bars, (lbs.)	3430.9
Concrete Pad, (sq. yds.)	52.1
Improved Subgrade, (sq. yds.)	60.1



PLOT DATE = 09/01/06  
 FILE NAME = #FILES#  
 PLOT SCALE = #Scales#  
 USER NAME = #USER#  
 S:\DOCUMENT\62361581\CTV\1\06\09\01\60B85.SHT  
 9:25:30AM, 9/1/2006

REVISIONS	
NAME	DATE
MRK	9/1/06

ILLINOIS DEPARTMENT OF TRANSPORTATION  
 I-55 OVER CSX RR AND SUNNYLAND DRAIN  
 BRIDGE WIDENING

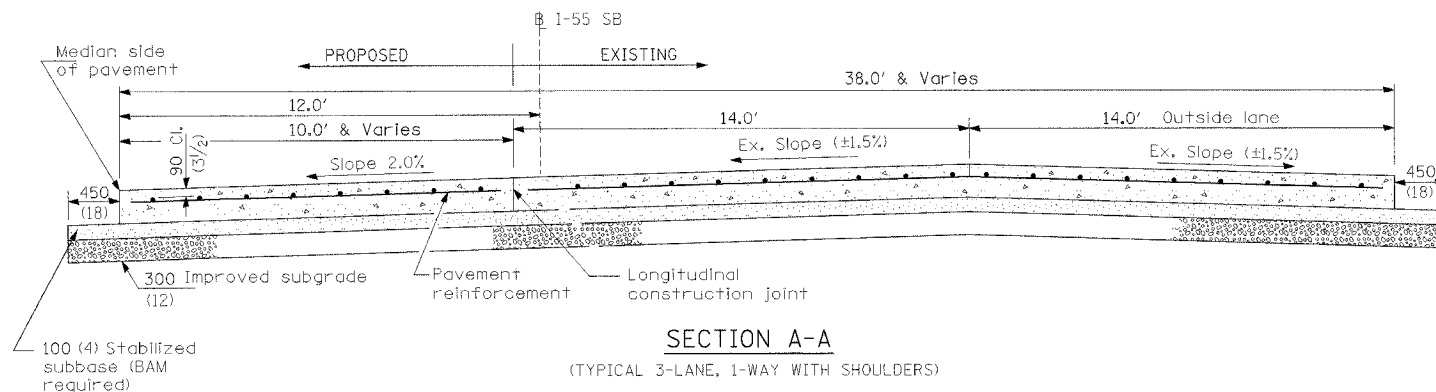
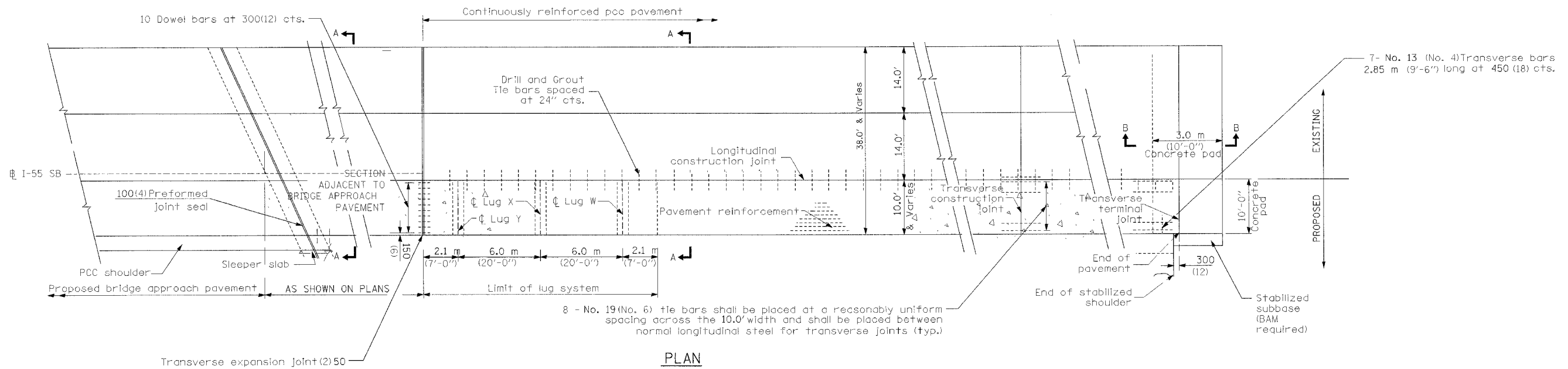
**ROADWAY DETAILS  
 CRC PAVEMENT WITH LUG SYSTEM  
 SOUTH OF CSX RAILROAD**

SCALE: NTS  
 DATE: 09/01/06

DRAWN BY: MRK  
 CHECKED BY: DDH

**TENG**  
 TENG & ASSOCIATES, INC.  
 ENGINEERS/ARCHITECTS/PLANNERS  
 CHICAGO, ILLINOIS

F.A.I. RTE.	SECTION	COUNTY	TOTAL SHEETS	SHEET NO.
55	2006-031 BY	WILL	137	26B
STA.		TO STA.		
FED. ROAD DIST. NO.	ILLINOIS	FED. AID PROJECT		



NOTES

- SEE ROADWAY PLAN 16 FOR LOCATION OF LUG SYSTEM COMPL 10.
- SEE STANDARD 421206 FOR DETAILS NOT SHOWN.
- SEE STANDARD 421001 FOR DETAILS OF PAVEMENT REINFORCEMENT.
- SEE STANDARDS 420001 AND 420401 FOR JOINT DETAILS NOT SHOWN.
- ALL DIMENSIONS ARE IN MILLIMETERS (INCHES) UNLESS OTHERWISE SHOWN.
- THE REINFORCING SHALL BE PLACED PARALLEL TO THE BASELINE IN TAPER AREAS.
- CRC REINFORCEMENT CHART ON STANDARD 421001 SHALL BE MODIFIED AS FOLLOWS:

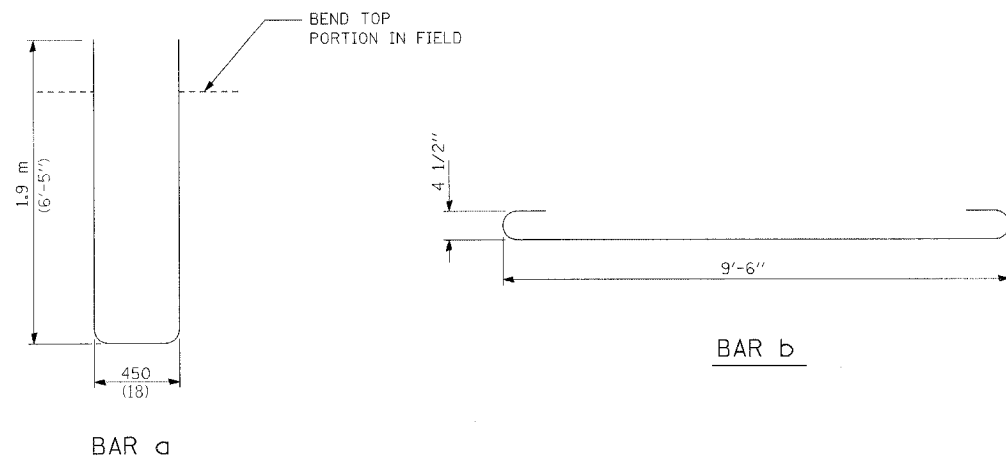
BAR SIZE	PAVEMENT WIDTH	A (Approx. Spacing)	B	C	D
#6	10'-0" (VARIES FROM 9'-11" TO 10'-5")	20 SPACES (21 BARS @ 5 3/4")	3 1/2"	3"	22"
#7	10'-0" (VARIES FROM 9'-11" TO 10'-5")	15 SPACES (16 BARS @ 7 5/8")	3 1/2"	3"	26"

\* CUT TRANSVERSE BARS FOR 10'-0" PAVEMENT WIDTH

MATERIALS REQUIRED FOR (1) ONE LUG SYSTEM  
(Excluding Pavement Concrete and Pavement Reinforcement)

Bar	No.	Size	Length	Shape
a	54	No. 8	14'-0"	
b	18	No. 5	10'-9"	
c	54	No. 5	20'-0"	
d	14	No. 4	9'-9"	

Concrete, (cu. yds.) 8.9  
Reinforcing Bars, (lbs.) 3438.0  
Concrete Pad, (sq. yds.) 53.3  
Improved Subgrade, (sq. yds.) 61.3



REVISIONS	
NAME	DATE
MRK	9/1/06

ILLINOIS DEPARTMENT OF TRANSPORTATION  
FAI ROUTE 55 (OVER CSX RR AND SUNNYLAND DRAIN)  
BRIDGE WIDENING

**ROADWAY DETAILS  
CRC PAVEMENT WITH LUG SYSTEM  
NORTH OF CSX RAILROAD**

SCALE: NTS  
DATE 09/01/06

DRAWN BY MRK  
CHECKED BY DDH

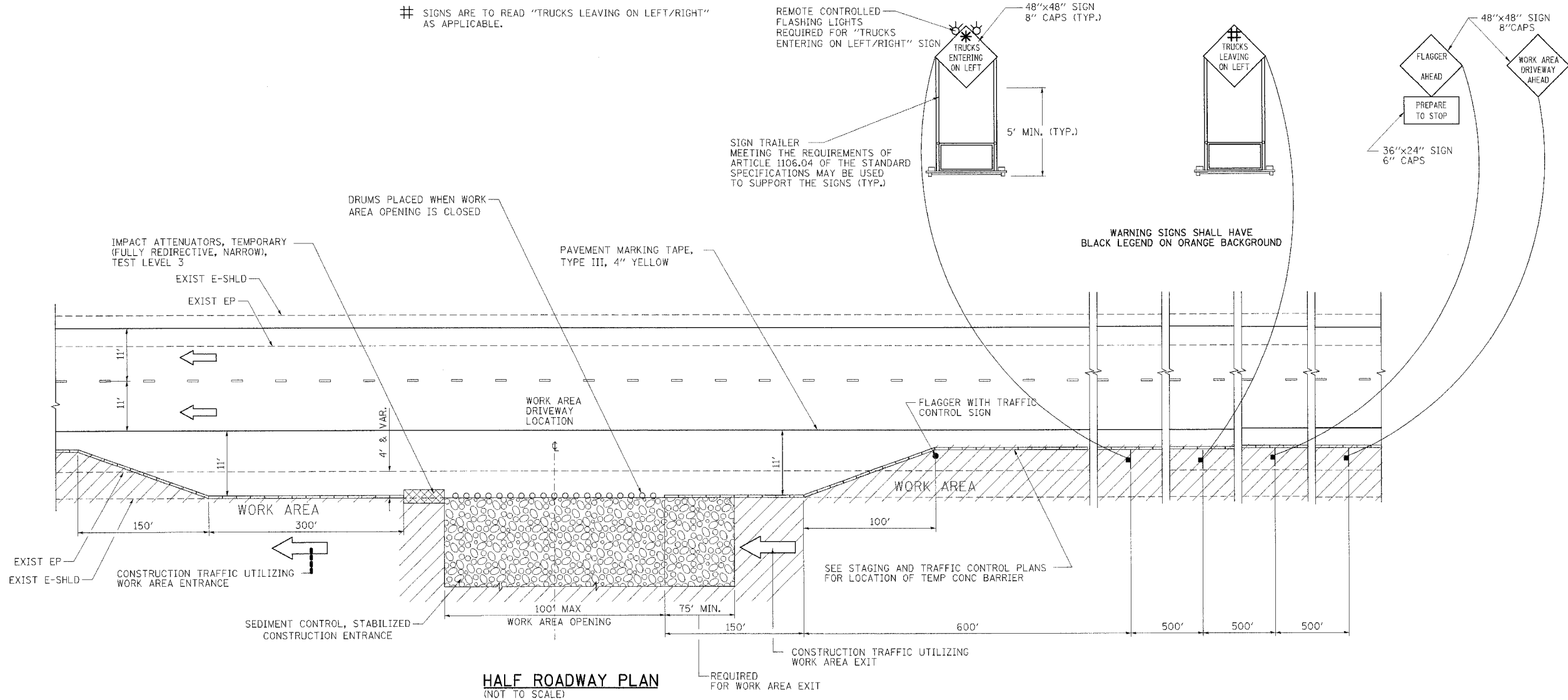
**TENG**  
TENG & ASSOCIATES, INC.  
ENGINEERS/ARCHITECTS/PLANNERS  
CHICAGO, ILLINOIS

PLT DATE = WATER  
FILE NAME = #FILE#  
PLT SCALE = #SCALE#  
USER NAME = #USER#

S:\DOCUMENT\10235158\LEVEL LOG\100714007.SHT

F.A.I. RTE.	SECTION	COUNTY	TOTAL SHEETS	SHEET NO.
55	2006-031	BY WILL	137	43B
STA.	TO STA.			
FED. ROAD DIST. NO.	ILLINOIS	FED. AID PROJECT		

- \* SIGNS ARE TO READ "TRUCKS ENTERING ON LEFT/RIGHT" AS APPLICABLE.
- # SIGNS ARE TO READ "TRUCKS LEAVING ON LEFT/RIGHT" AS APPLICABLE.



**HALF ROADWAY PLAN**  
(NOT TO SCALE)

**NOTES**

1. THIS DETAIL IS ONLY USED WHEN A SINGLE WORK AREA DRIVEWAY IS USED TO ACCESS AN ISOLATED WORK AREA.
2. THE "FLAGGER AHEAD" AND "TRUCKS ENTERING OR TRUCKS LEAVING ON LEFT/RIGHT" SIGNS SHALL BE COVERED OR TURNED AWAY FROM TRAFFIC WHEN THE FLAGGING OPERATION CEASES.
3. THE FLASHING LIGHTS SHALL MEET THE REQUIREMENTS OF ARTICLE 702.05(g) AND BE OPERATED BY THE FLAGGER REMOTELY. THE LIGHTS SHALL BE FLASHING ONLY WHEN A VEHICLE IS ENTERING THE EXPRESSWAY.
4. THE WORK AREA DRIVEWAY SHALL BE LOCATED A MINIMUM OF 500' FROM ADVANCE WARNING SIGNS FOR DOWNSTREAM WORK AREA OPENINGS AND A MINIMUM OF 2800' FROM UPSTREAM WORK AREA DRIVEWAY LOCATIONS. WORK AREA OPENINGS INTO THE MEDIAN FROM BOTH DIRECTIONS OF TRAFFIC SHALL NOT BE PLACED DIRECTLY ACROSS FROM EACH OTHER. THE WORK AREA OPENING LOCATION SHALL BE APPROVED BY THE ENGINEER.
5. ALL CONSTRUCTION VEHICLES SHALL EXIT THE WORK AREA AT A WORK AREA OPENING.
6. ALL CONSTRUCTION VEHICLES SHALL ENTER THE WORK AREA AT A WORK AREA ENTRANCE OPENING AND SHALL USE THEIR TURN SIGNALS TO WARN MOTORISTS.
7. THE CONTRACTOR SHALL PLACE DRUMS WITH STEADY BURNING MONODIRECTIONAL LIGHTS, SPACED AT 10' CENTERS, ACROSS THE WORK AREA OPENING WHEN THE WORK AREA OPENING IS CLOSED. THE COSTS OF INSTALLING, MAINTAINING AND REMOVING THESE DRUMS AND SIGNS SHALL BE INCLUDED IN THE UNIT PRICE BID FOR "TRAFFIC CONTROL AND PROTECTION (EXPRESSWAYS)".
8. A FLAGGER IS REQUIRED AT ALL TIMES UNLESS THE WORK AREA OPENING IS CLOSED. THE COST OF THE FLAGGER WILL NOT BE PAID FOR SEPARATELY, BUT SHALL BE INCLUDED IN THE UNIT PRICE BID FOR "TRAFFIC CONTROL AND PROTECTION (EXPRESSWAYS)".
9. SEE STAGING AND TRAFFIC CONTROL DETAIL FOR STABILIZED CONSTRUCTION ENTRANCE.

**LEGEND:**

- FLAGGER WITH TRAFFIC CONTROL SIGN
- ← DIRECTION OF TRAFFIC
- SIGN ON SUPPORT
- DRUM W/ MONODIRECTIONAL STEADY BURN LIGHT
- TBT = TRAFFIC BARRIER TERMINAL
- TCB = TEMPORARY CONCRETE BARRIER
- ▨ WORK AREA
- ▩ IMPACT ATTENUATOR

REVISIONS	
NAME	DATE
AG	9/1/06

ILLINOIS DEPARTMENT OF TRANSPORTATION  
FAI ROUTE 55 (OVER CSX RR AND SUNNYLAND DRAIN)  
BRIDGE WIDENING

**STAGING AND TRAFFIC CONTROL  
DETAIL FOR ISOLATED WORK AREA  
DRIVEWAY ENTRANCE/EXIT**

SCALE: N.T.S. DRAWN BY SEB  
DATE 09/01/06 CHECKED BY DDH

**TENG**  
TENG & ASSOCIATES, INC.  
ENGINEERS/ARCHITECTS/PLANNERS  
CHICAGO, ILLINOIS

PLOT DATE = 09/01/06 FILE NAME = I:\FILES\60B85\60B85.DWG USER = MUSEV  
 S:\DOCUMENTS\60B85\60B85.DWG\60B85.DWG GARCIAZ 09/01/06 10:59:34