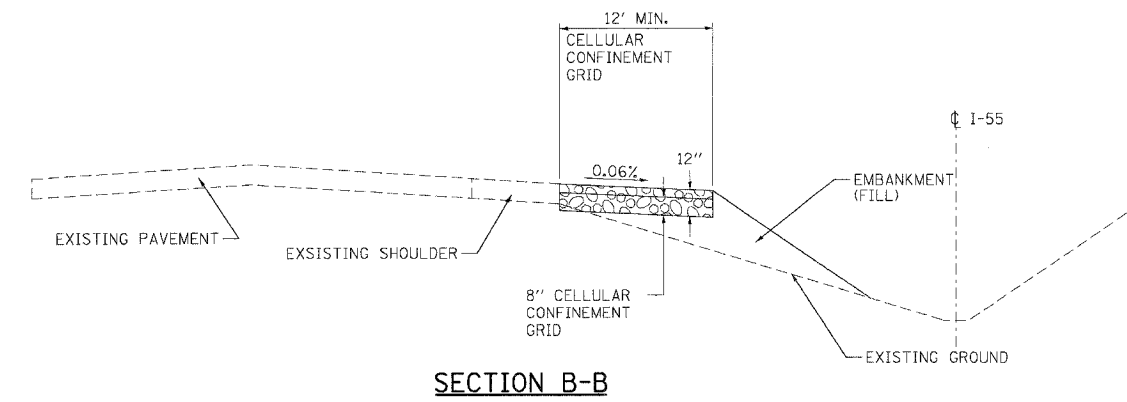
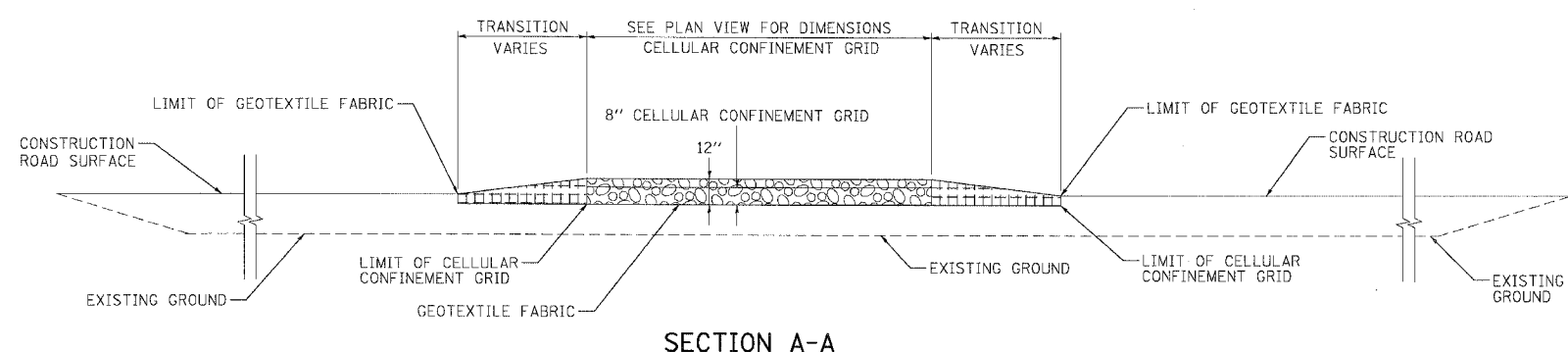
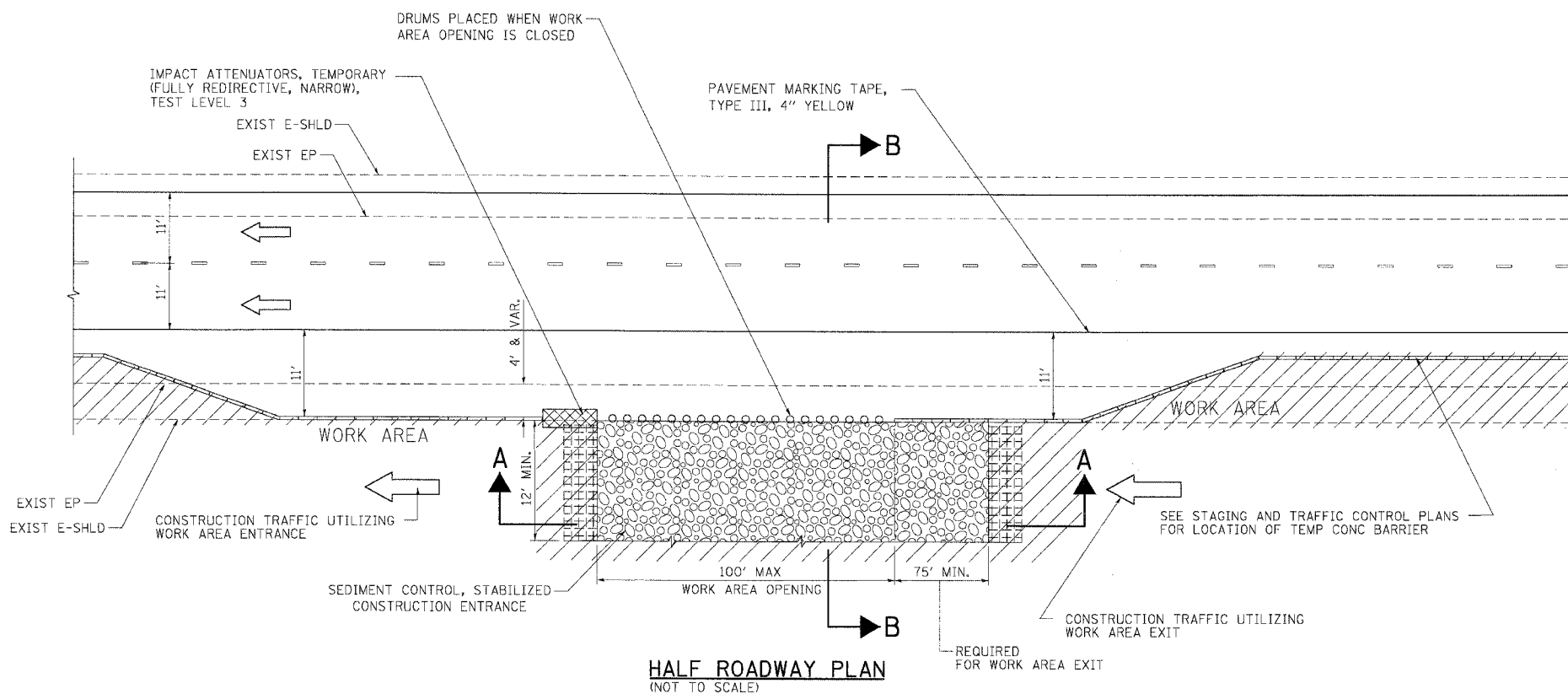


F.A.I. RTE.	SECTION	COUNTY	TOTAL SHEETS	SHEET NO.
55	2006-031 BY	WILL	137	48
STA.		TO STA.		
FED. ROAD DIST. NO.	ILLINOIS	FED. AID PROJECT		



**LEGEND:**

	COURSE AGGREGATE CA-3
	SEDIMENT CONTROL, STABILIZED CONSTRUCTION ENTRANCE
	DIRECTION OF TRAFFIC
	WORK AREA
	IMPACT ATTENUATOR

- NOTES:**
1. THE EXISTING BITUMINOUS SHOULDER SHALL REMAIN IN THE PLACE UNTIL THE STABILIZED CONSTRUCTION ENTRANCE IS REMOVED.
  2. EXISTING DITCH DRAINAGE TO BE MAINTAINED.
  3. THE COST OF ANY COURSE AGGREGATE CA-3 USED FOR TRANSITION FROM THE CONSTRUCTION ROAD TO THE STABILIZED CONSTRUCTION ENTRANCE WILL NOT BE PAID FOR SEPARATELY, BUT SHALL BE INCLUDED IN THE UNIT PRICE BID FOR "SEDIMENT CONTROL, STABILIZED CONSTRUCTION ENTRANCE".
  4. SEE STAGING AND TRAFFIC CONTROL DETAIL FOR WORK AREA DRIVEWAY ENTRANCE/EXIT.
  5. THE SEDIMENT CONTROL, STABILIZED CONSTRUCTION ENTRANCE DIMENSIONS SHALL BE APPROVED BY THE ENGINEER.

**REVISIONS**

NAME	DATE

ILLINOIS DEPARTMENT OF TRANSPORTATION  
 FAI ROUTE 55 (OVER CSX RR AND SUNNYLAND DRAIN)  
 BRIDGE WIDENING

**EROSION AND SEDIMENT CONTROL  
 DETAIL FOR STABILIZED CONSTRUCTION  
 ENTRANCE**

SCALE: N.T.S. DRAWN BY JP  
 DATE 07/07/06 CHECKED BY DDH

**TENG** TENG & ASSOCIATES, INC.  
 ENGINEERS/ARCHITECTS/PLANNERS  
 CHICAGO, ILLINOIS

PLOT DATE = 08/17/06  
 PLOT SCALE = 1/8"=1'-0"  
 USER NAME = RUSER  
 SN\DOCUMENT\02361502\ACT\LDON\ED\0910\01\01.SHT  
 GARCIA\AZ  
 7-95-2006-827452