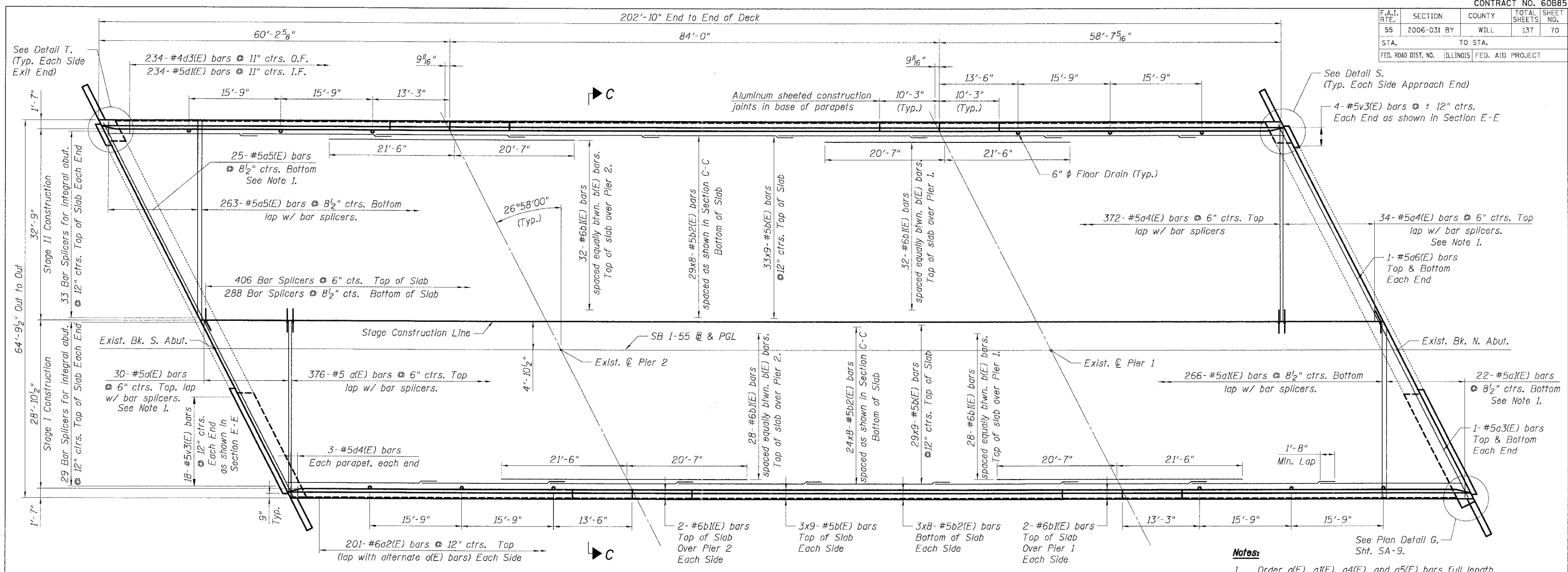
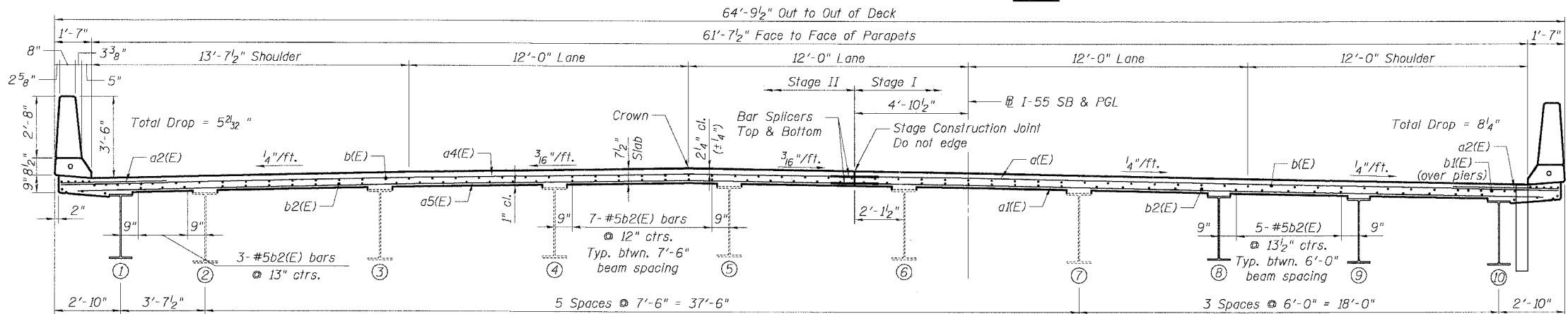


F.A.I. RTE.	SECTION	COUNTY	TOTAL SHEETS	SHEET NO.
55	2006-031	BY WILL	137	70
STA.	TO STA.			
FED. ROAD DIST. NO.	ILLINOIS	FED. AID PROJECT		

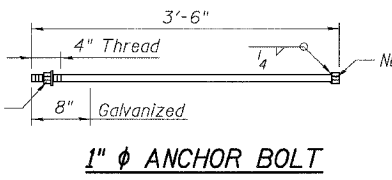


PLAN

- Notes:**
1. Order a(E), a1(E), a4(E), and a5(E) bars full length. Cut to fit skew and use remainder of bars in opposite end.
 2. Work this sheet with Sht. SA-8 & SA-9 & SA-10.
 3. Reinforcement bars designated (E) shall be epoxy coated.
 4. Bars indicated thus 41x8-#5 etc. indicates 41 lines of bars with 8 lengths per line.
 5. See Sht. SA-8 for parapet details.
 6. For Section E-E, see Sht. SA-10.
 7. See Sht. SA-17 for bar splicer details.
 8. All edges shall have a 3/4" chamfer unless noted otherwise.
 9. Space bars to miss drains.
 10. Lap length for #5 bars = 1'-8" min.
 11. I.F. = Inside face, O.F. = outside face, E.F. = each face

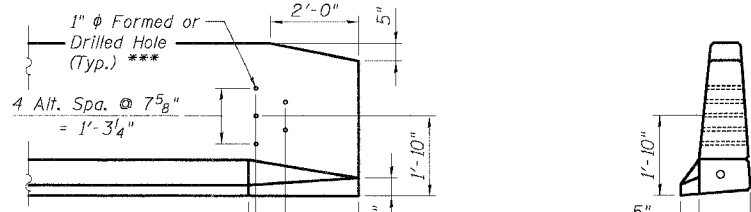


SECTION C-C



DETAIL T

At exit end of both parapets.



DETAIL S

At approach end of both parapets.

SHT. SA-7 OF 21

REVISIONS	
NAME	DATE

ILLINOIS DEPARTMENT OF TRANSPORTATION
 FAI ROUTE 55 (OVER CSX RR AND SUNNYLAND DRAIN)
 BRIDGE WIDENING
 SB I-55 OVER CSX RAILROAD, S.N. 099-0312
 STA. 167+72.58, SECTION 2006-031 BY
 WILL COUNTY

DECK PLAN & CROSS SECTION

SCALE: DRAWN BY MDB
 DATE 07/07/06 CHECKED BY MJK
TENG TENG & ASSOCIATES, INC.
 ENGINEERS/ARCHITECTS/PLANNERS
 CHICAGO, ILLINOIS

PLOT DATE = 07/07/06
 PLOT SCALE = AS SHOWN
 USER NAME = MJB
 S:\DOCUMENT\22361361\STRUCT\CON\B\MS\A001.SHT
 CARGRAZ
 7-05-2006, 8:31:56