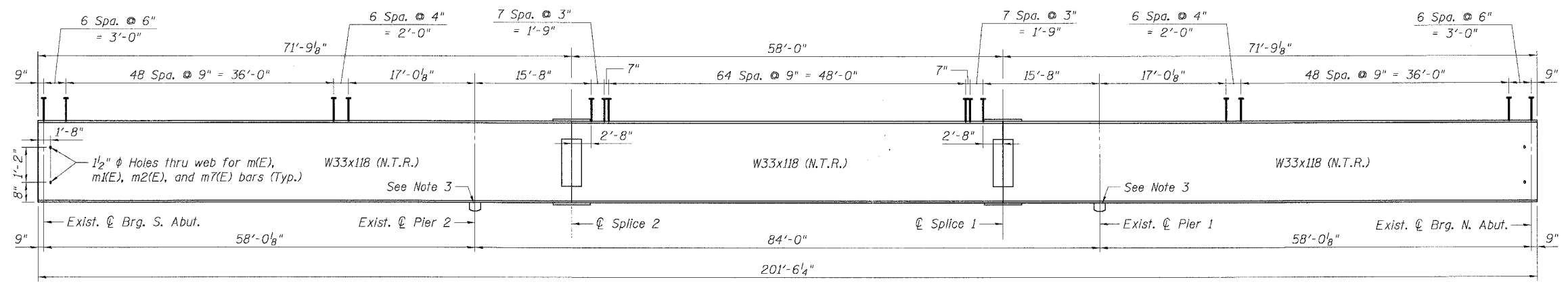
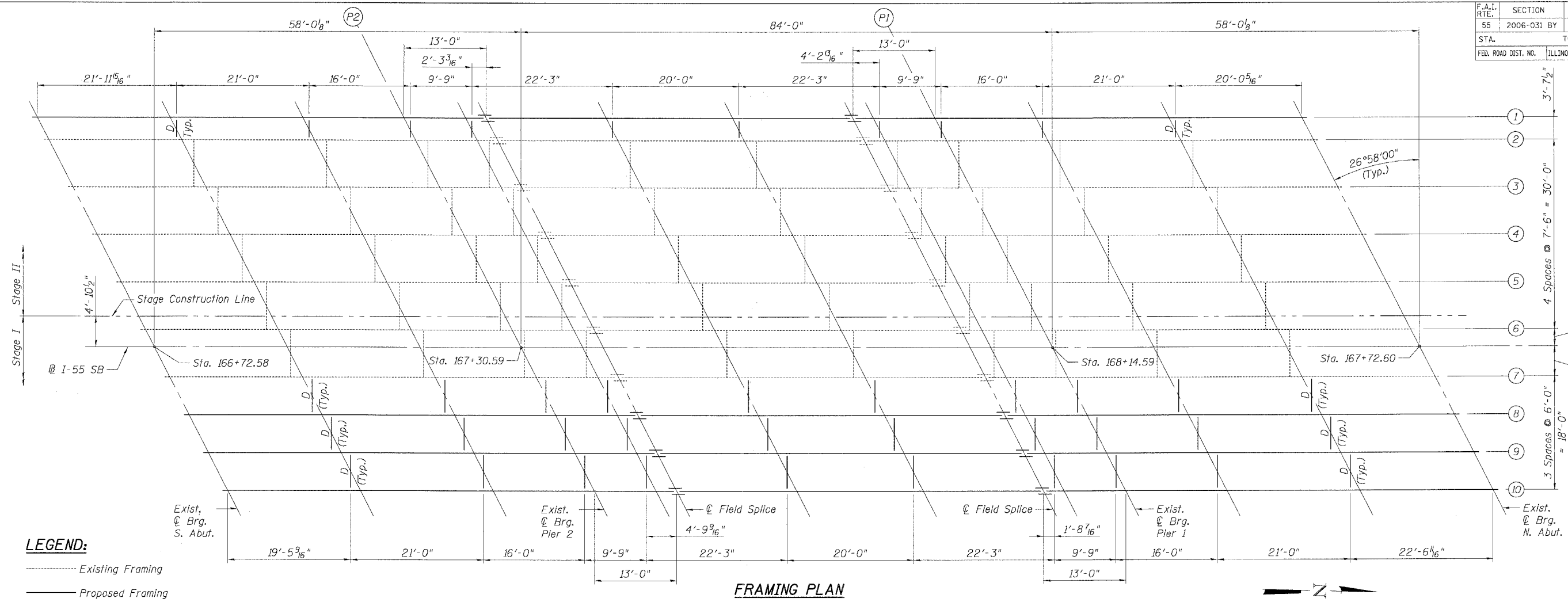


F.A.I. RTE.	SECTION	COUNTY	TOTAL SHEETS	SHEET NO.
55	2006-031 BY	WILL	137	74
STA.		TO STA.		
FED. ROAD DIST. NO.		ILLINOIS FED. AID PROJECT		



- Notes:**
- ** 1. N.T.R. denotes steel is subject to Supplemental Requirements for Notch Toughness. (Zone 2)
 - 2. For bearing, field splice, and diaphragm details, see Sht. SA-12.
 - ** 3. Rocker plates to be shop welded to bottom flange at Pier 1 and 2 locations. See Sht. SA-12 for details.

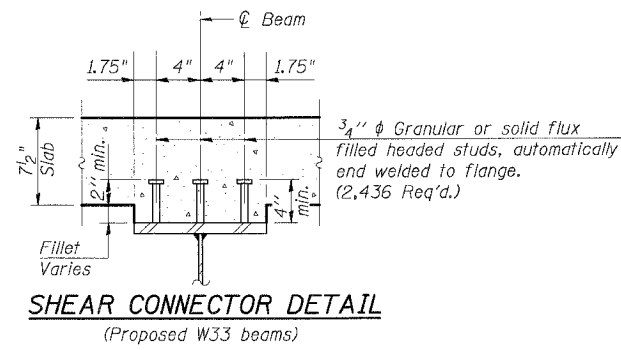
** These notes included in Erection Contract for information only.

TOP OF BEAM ELEVATIONS
(for fabrication use only)

Beam	Exist. φ Brg. S. Abut.	Exist. φ Pier 2	φ Field Splice	φ Field Splice	Exist. φ Pier 1	Exist. φ Brg. N. Abut.
1	578.15	578.21	578.23	578.23	578.22	578.15
8	578.24	578.27	578.28	578.23	578.21	578.08
9	578.12	578.15	578.15	578.10	578.07	577.94
10	578.00	578.02	578.02	577.97	577.94	577.80

BILL OF MATERIAL

Item	Unit	Total
Stud Shear Connectors	Each	2,436



SHT. SA-11 OF 21

REVISIONS	
NAME	DATE

ILLINOIS DEPARTMENT OF TRANSPORTATION
FAT ROUTE 55 (OVER CSX RR AND SUNNYLAND DRAIN)
BRIDGE WIDENING
SB I-55 OVER CSX RAILROAD, S.N. 099-0312
STA. 167+72.58, SECTION 2006-031 BY
WILL COUNTY

**FRAMING PLAN,
TOP OF BEAM ELEVATIONS,
SHEAR STUD DETAILS**

SCALE: DATE 07/07/06 DRAWN BY MDR CHECKED BY MJK

TENG TENG & ASSOCIATES, INC. ENGINEERS/ARCHITECTS/PLANNERS CHICAGO, ILLINOIS

PLOT DATE = 07/07/06
 PLOT SCALE = AS SHOWN
 USER NAME = MUSER88
 S:\DOCUMENT\023151501\STRUCT\00\N\FR09\FR09A10.SHT
 7-95-2805-B-3237 GARCIA/MAZ