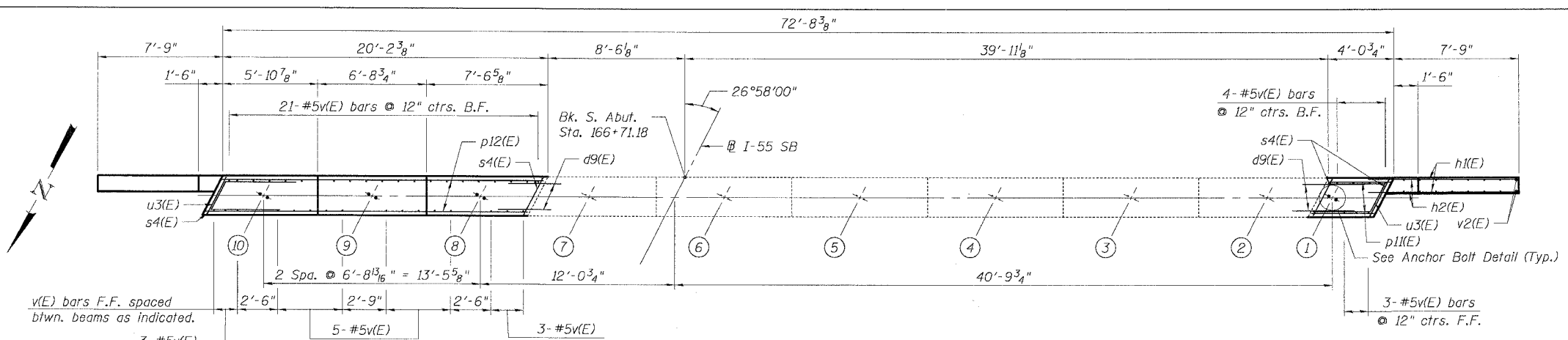
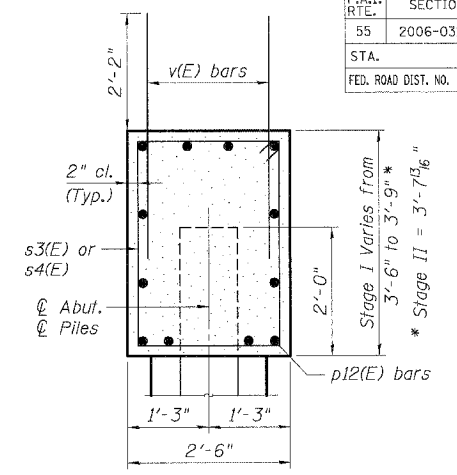


F.A.I. RTE.	SECTION	COUNTY	TOTAL SHEETS	SHEET NO.
55	2006-031 BY	WILL	137	79
STA. TO STA.		FED. ROAD DIST. NO. ILLINOIS FED. AID PROJECT		



SOUTH ABUTMENT TOP PLAN



SEC. THRU S. ABUT.

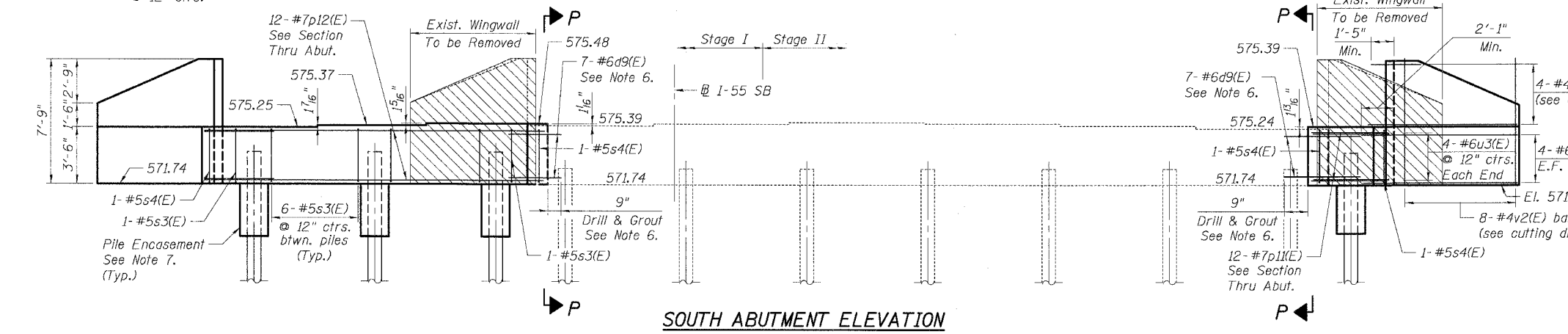
(Stage I widening shown, Stage II widening similar)

BAR LIST

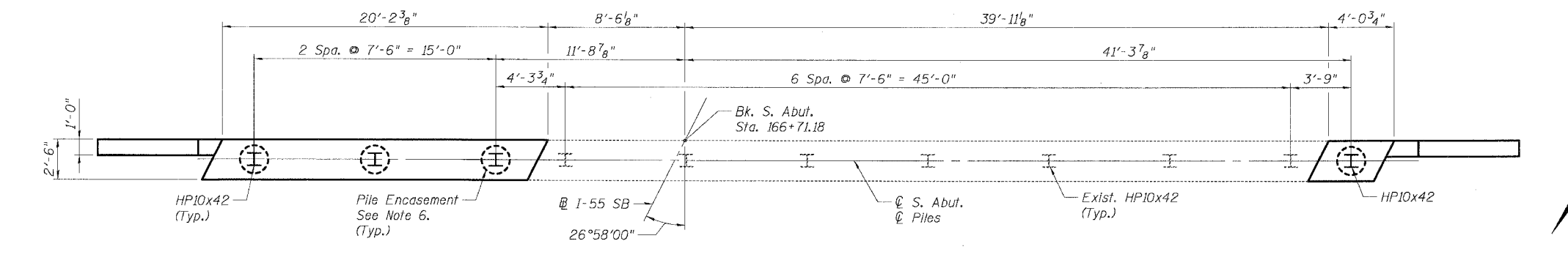
Bar	No.	Size	Length	Shape
d9(E)	14	#6	3'-0"	—
h1(E)	8	#4	12'-3"	—
h2(E)	16	#6	9'-9"	—
p11(E)	12	#7	3'-8"	—
p12(E)	12	#7	19'-10"	—
s3(E)	14	#5	11'-3"	□
s4(E)	4	#5	11'-9"	□
u3(E)	8	#6	9'-2"	∩
v(E)	44	#5	4'-4"	—
v2(E)	16	#4	12'-3"	—

BILL OF MATERIAL

Item	Unit	N. Abut.
Concrete Structures	Cu. Yd.	12.0
Reinforcement Bars, Epoxy Coated	Pound	1,590
Structure Excavation	Cu. Yd.	69
Concrete Removal	Cu. Yd.	3.1



SOUTH ABUTMENT ELEVATION

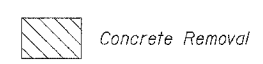


SOUTH ABUTMENT FOOTING PLAN

Notes:

- Space reinforcement in cap to miss anchor bolts.
- Pour steps monolithically with cap.
- For anchor bolt details, see Sht. SA-13.
- Reinforcement bars designated (E) shall be epoxy coated.
- E.F. = Each Face, F.F. = Front Face, B.F. = Back Face
- Drill and epoxy grout d9(E) bars in 9" min. drilled holes according to Section 584 of the Standard Specifications. Method and grout are subject to the approval of the Engineer. Locate dowels to provide a minimum of 4" clear cover. Cost of drilling and grouting bars shall be included with Reinforcement Bars, Epoxy Coated.
- For pile encasement details, see Sht. SA-3.
- For Section P-P, see Sht. SA-14.
- Bars designated (E) shall be epoxy coated.

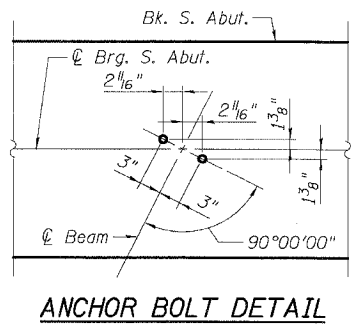
LEGEND



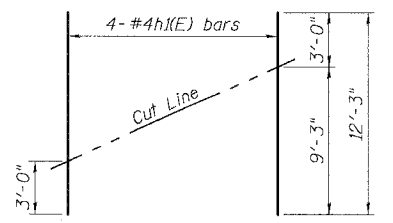
PILE DATA

Stage I
 Type: Steel HP10x42 w/ Metal Pile Shoes Driven to Refusal
 Design Capacity: -
 Required Bearing: 40.0 ft
 Estimated Length: 2 + 1 Test Pile
 Number Required: -

Stage II
 Type: Steel HP10x42 w/ Metal Pile Shoes Driven to Refusal
 Design Capacity: -
 Required Bearing: 37.5 ft
 Estimated Length: 1
 Number Required: -

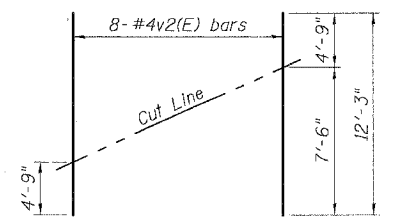


ANCHOR BOLT DETAIL



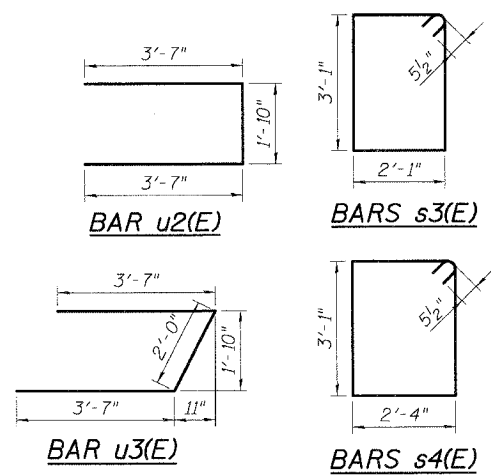
FIELD CUTTING DIAGRAM

Order h1(E) full length. Cut as shown and use remainder of bars in opposite face.



FIELD CUTTING DIAGRAM

Order v2(E) full length. Cut as shown and use remainder of bars in opposite face.



SHT. SA-15 OF 21

REVISIONS	
NAME	DATE

ILLINOIS DEPARTMENT OF TRANSPORTATION
 FAI ROUTE 55 (OVER CSX RR AND SUNNYLAND DRAIN)
 BRIDGE WIDENING
 SB I-55 OVER CSX RAILROAD, S.N. 099-0312
 STA. 167+72.58, SECTION 2006-031 BY
 WILL COUNTY

SOUTH ABUTMENT

SCALE: DRAWN BY MDB
 DATE: 07/07/06 CHECKED BY MJK
TENG TENG & ASSOCIATES, INC.
 ENGINEERS/ARCHITECTS/PLANNERS
 CHICAGO, ILLINOIS

PLOT DATE = 08/07/06
 PLOT SCALE = AS SHOWN
 USER NAME = MJB
 S:\PROJECTS\06-031\06-031-15\DRAWING\06-031-15-079.DWG
 7:05:26AM 8/7/06
 CARCLIAZ