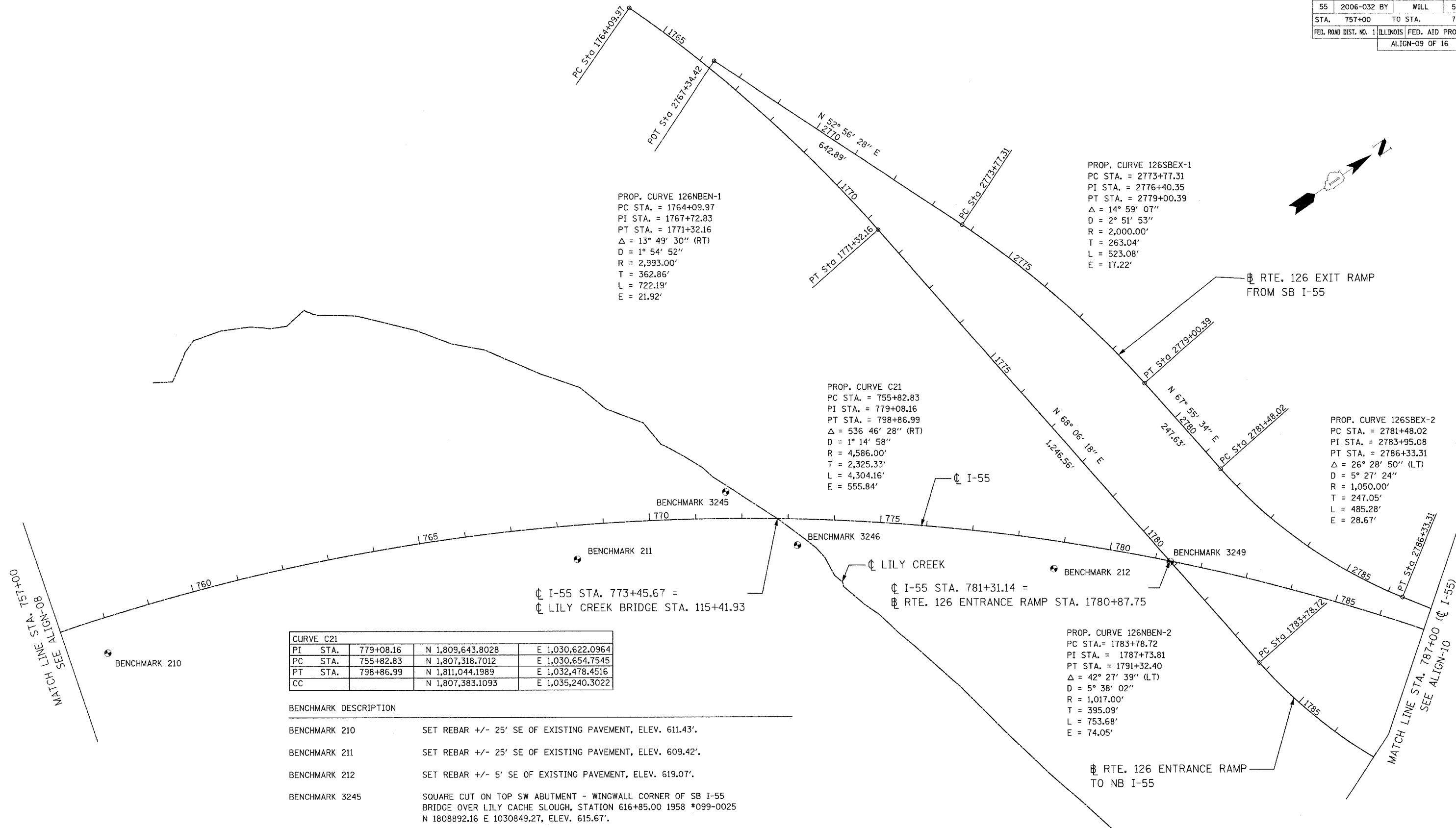


F.A. RTE.	SECTION	COUNTY	TOTAL SHEETS	SHEET NO.
55	2006-032 BY	WILL	505	34
STA. 757+00		TO STA. 787+00		
FED. ROAD DIST. NO. 1 ILLINOIS FED. AID PROJECT				
ALIGN-09 OF 16				



PROP. CURVE 126NBEN-1
 PC STA. = 1764+09.97
 PI STA. = 1767+72.83
 PT STA. = 1771+32.16
 $\Delta = 13^\circ 49' 30''$ (RT)
 $D = 1^\circ 54' 52''$
 $R = 2,993.00'$
 $T = 362.86'$
 $L = 722.19'$
 $E = 21.92'$

PROP. CURVE 126SBEX-1
 PC STA. = 2773+77.31
 PI STA. = 2776+40.35
 PT STA. = 2779+00.39
 $\Delta = 14^\circ 59' 07''$
 $D = 2^\circ 51' 53''$
 $R = 2,000.00'$
 $T = 263.04'$
 $L = 523.08'$
 $E = 17.22'$

PROP. CURVE C21
 PC STA. = 755+82.83
 PI STA. = 779+08.16
 PT STA. = 798+86.99
 $\Delta = 536' 46'' 28''$ (RT)
 $D = 1^\circ 14' 58''$
 $R = 4,586.00'$
 $T = 2,325.33'$
 $L = 4,304.16'$
 $E = 555.84'$

PROP. CURVE 126SBEX-2
 PC STA. = 2781+48.02
 PI STA. = 2783+95.08
 PT STA. = 2786+33.31
 $\Delta = 26^\circ 28' 50''$ (LT)
 $D = 5^\circ 27' 24''$
 $R = 1,050.00'$
 $T = 247.05'$
 $L = 485.28'$
 $E = 28.67'$

PROP. CURVE 126NBEN-2
 PC STA. = 1783+78.72
 PI STA. = 1787+73.81
 PT STA. = 1791+32.40
 $\Delta = 42^\circ 27' 39''$ (LT)
 $D = 5^\circ 38' 02''$
 $R = 1,017.00'$
 $T = 395.09'$
 $L = 753.68'$
 $E = 74.05'$

CURVE C21			
PI	STA.	N	E
PC	STA.	N	E
PT	STA.	N	E
CC		N	E

BENCHMARK DESCRIPTION	
BENCHMARK 210	SET REBAR +/- 25' SE OF EXISTING PAVEMENT, ELEV. 611.43'.
BENCHMARK 211	SET REBAR +/- 25' SE OF EXISTING PAVEMENT, ELEV. 609.42'.
BENCHMARK 212	SET REBAR +/- 5' SE OF EXISTING PAVEMENT, ELEV. 619.07'.
BENCHMARK 3245	SQUARE CUT ON TOP SW ABUTMENT - WINGWALL CORNER OF SB I-55 BRIDGE OVER LILY CACHE SLOUGH, STATION 616+85.00 1958 *099-0025 N 1808892.16 E 1030849.27, ELEV. 615.67'.
BENCHMARK 3246	FD SQUARE CUT ON TOP OF SE CORNER OF ABUTMENT - WINGWALL OF NB I-55 BRIDGE OVER LILY CACHE SLOUGH STATION 616+85.00 1956 *099-0024 N 1809000.07 E 1031009.38, ELEV. 615.57'.
BENCHMARK 3249	SQUARE CUT ON E EDGE AND S END OF MIDDLE PIER OF RTE. 126 BRIDGE OVER I-55. N 1809747.63 E 1031312.57, ELEV. 625.30'.



REVISIONS	
NAME	DATE

ILLINOIS DEPARTMENT OF TRANSPORTATION
 FAI ROUTE 55
 US 30 (PLAINFIELD ROAD) TO LILY CACHE SLOUGH
 ALIGNMENT, TIES AND BENCHMARKS
 SCALE: 1"=100'
 DATE: 06-30-06
 DRAWN BY: ALR
 CHECKED BY: RH

FINAL