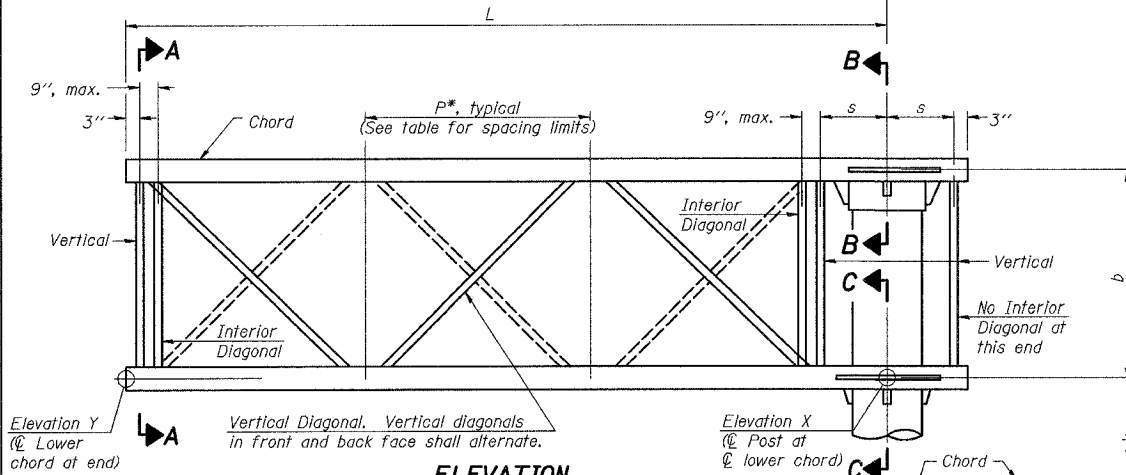
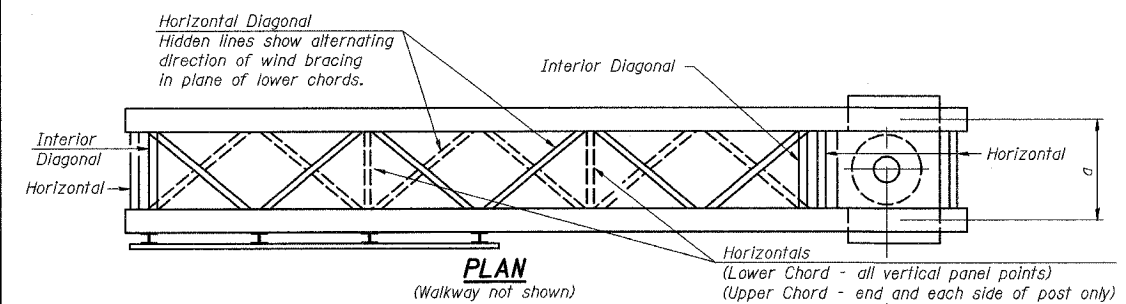
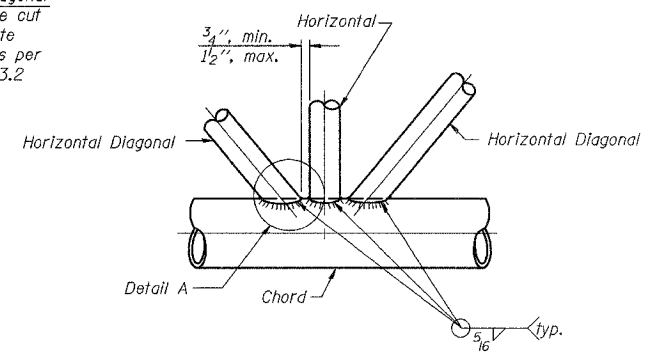
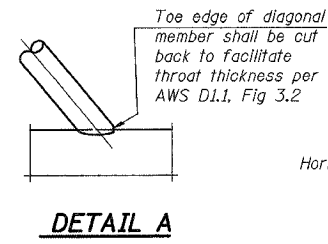
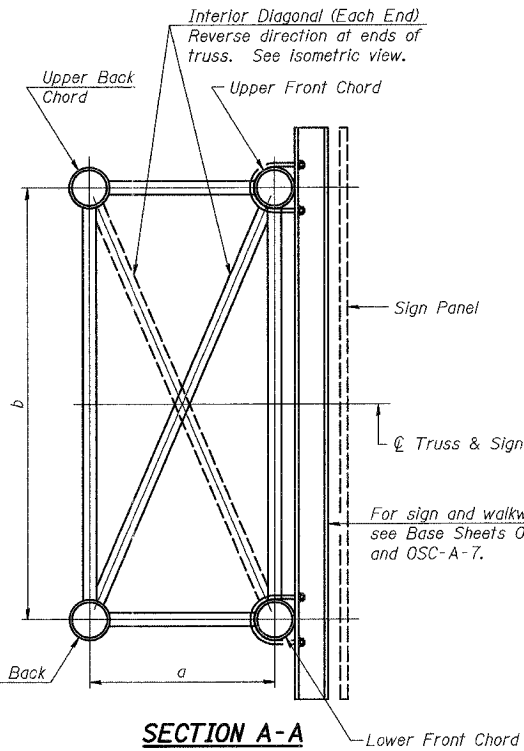


| | | | | |
|---------------------|-------------|--------------------|------------------|-----------|
| F.A.P. RTE. | SECTION | COUNTY | TOTAL SHEETS | SHEET NO. |
| 55 | 2006-032 BY | WILL | 505 | 220 |
| STA. | | TO STA. | | |
| FED. ROAD DIST. NO. | | ILLINOIS | FED. AID PROJECT | |
| | | DETL-220 OF 505 | | |
| | | CONTRACT NO. 60B86 | | |

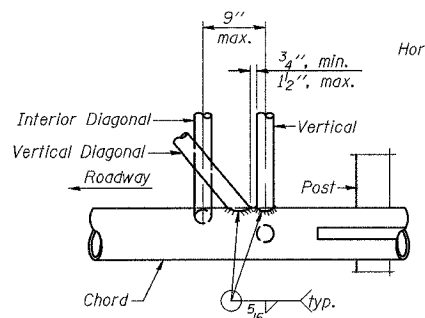


ELEVATION
(Sign and walkway omitted for clarity)
TYPICAL TRUSS UNIT
For Section B-B and Section C-C, see Base Sheet OSC-A-3.

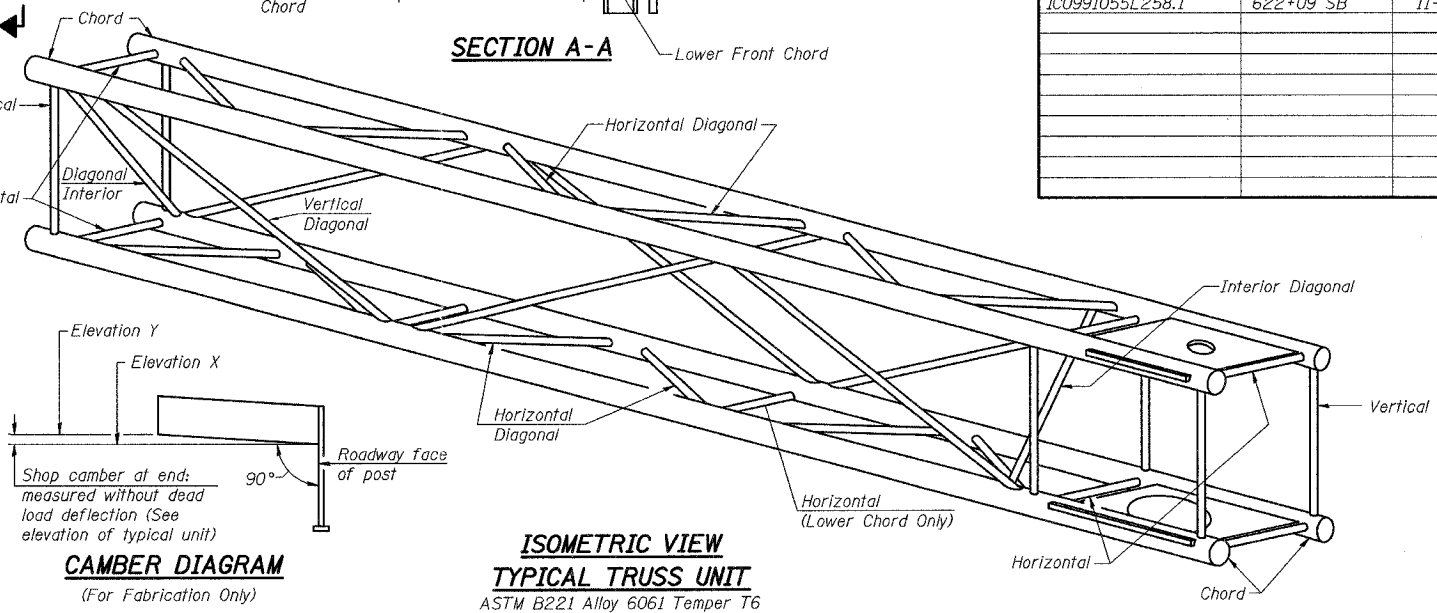


TRUSS INTERIOR JOINT DETAIL

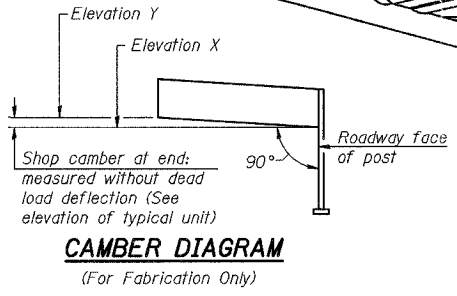
| Structure Number | Station | Truss Type | Design Length (L) | Number of Panels Per Unit | Panel Length (P)* |
|------------------|-----------|------------|-------------------|---------------------------|-------------------|
| IC0991055L258.0 | 615+00 SB | II-C-A | 26.5 | 7 | 42" |
| IC0991055L258.1 | 622+09 SB | II-C-A | 26.5 | 7 | 42" |
| | | | | | |
| | | | | | |
| | | | | | |
| | | | | | |
| | | | | | |
| | | | | | |
| | | | | | |
| | | | | | |



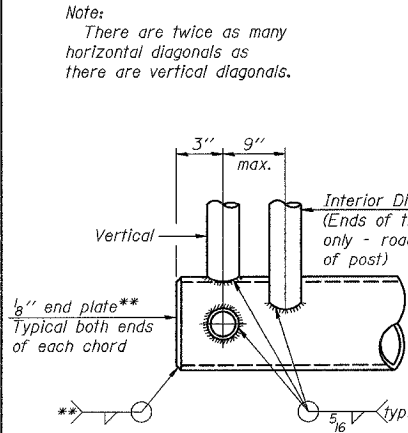
POST END JOINT DETAIL



ISOMETRIC VIEW
TYPICAL TRUSS UNIT
ASTM B221 Alloy 6061 Temper T6



CAMBER DIAGRAM
(For Fabrication Only)



CANTILEVER END JOINT DETAIL
** Contractor may alternatively use standard aluminum drive-fit cap to close ends.

SHOP CAMBER TABLE

| Unit Length (L) | Shop Camber at End |
|-----------------|--------------------|
| 15' | 1 1/2" |
| 16'-17' | 1 3/4" |
| 18'-20' | 2" |
| 21'-22' | 2 1/4" |
| 23'-25' | 2 1/2" |
| 26'-27' | 2 3/4" |
| 28'-30' | 3" |
| 31'-32' | 3 1/4" |
| 33'-35' | 3 1/2" |
| 36'-37' | 4" |
| 38'-40' | 4 1/2" |

TRUSS UNIT TABLE

| Truss Type | Dimension "a" | Dimension "b" | Dimension "s" | Limits for Panel Spacing (P)* | Up. & Low. Chord | | Verticals; Horizontals; Vertical, Horizontal, and Interior Diagonals | |
|-----------------------|---------------|---------------|---------------|-------------------------------|------------------|-------|--|-------|
| | | | | | O.D. | Wall | O.D. | Wall |
| I-C-A | 24" | 54" | 16" | 36" min. to 48" max. | 5" | 5/16" | 2 1/2" | 5/16" |
| II-C-A | 36" | 66" | 21" | 42" min. to 54" max. | 6 1/2" | 5/16" | 3 1/4" | 5/16" |
| III-C-A (35' Max.) | 36" | 84" | 21" | 48" min. to 66" max. | 7" | 3/8" | 3 1/2" | 3/8" |
| III-C-A (>35' to 40') | 36" | 84" | 21" | 48" min. to 66" max. | 8" | 3/8" | 3 1/2" | 3/8" |

*P = $\frac{L-s-3"}{\# \text{ Panels}}$

| NUMBER | REVISION | DATE |
|--------|----------|------|
| | | |
| | | |
| | | |
| | | |
| | | |

OSC-A-2 1-7-05

DAVID MASON & ASSOCIATES
Civil Engineering
Structural Engineering
Surveying
445 E. Illinois, Suite 640
Chicago, IL 60611
(312) 842-0600

PARSONS BRINCKERHOFF

| REVISIONS | |
|-----------|------|
| NAME | DATE |
| | |
| | |
| | |
| | |
| | |

ILLINOIS DEPARTMENT OF TRANSPORTATION
FAI ROUTE 55
US 30 (PLAINFIELD ROAD) TO LILY CACHE SLOUGH
CANTILEVER SIGN STRUCTURES
TRUSS DETAILS
ALUMINUM TRUSS & STEEL POST

SCALE: DATE: 06-30-06
DRAWN BY: LC, JS, TC
CHECKED BY: SE