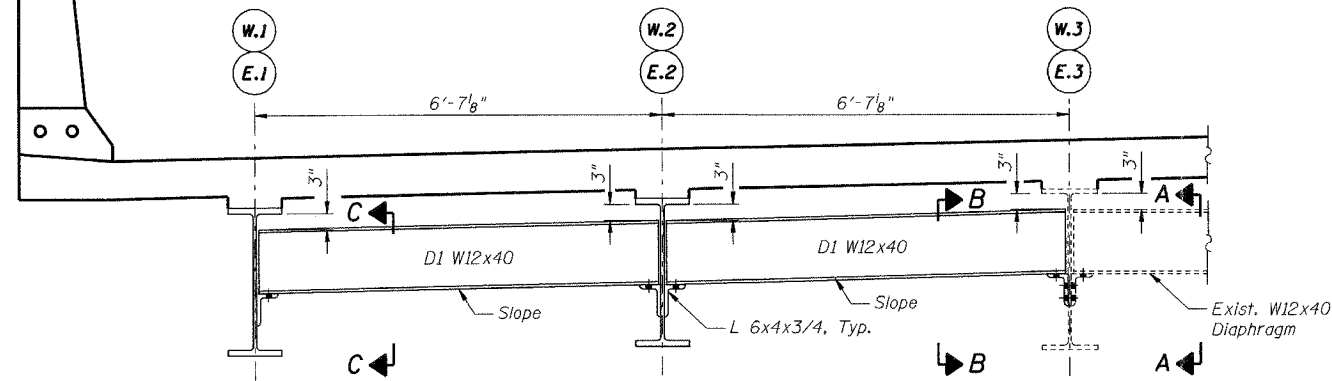
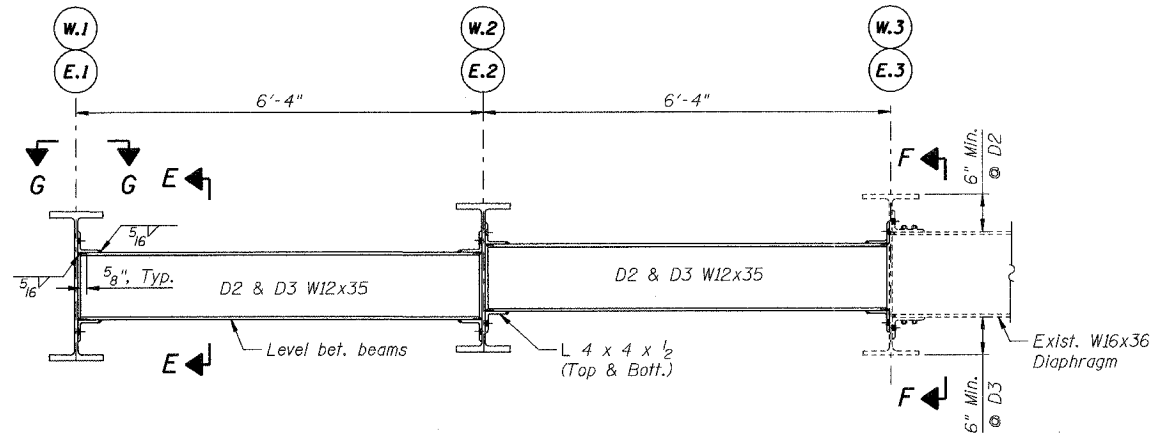


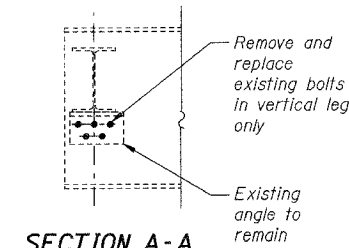
F.A.I. RTE.	SECTION	COUNTY	TOTAL SHEETS	SHEET NO.
55	2006-032 BY	WILL.	505	280
STA.		TO STA.		
FED. ROAD DIST. NO.	ILLINOIS	FED. AID PROJECT		



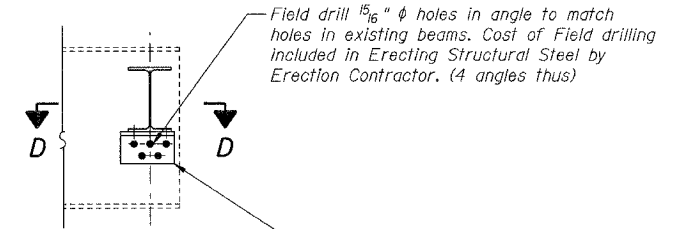
END DIAPHRAGM D1
(8 Required)



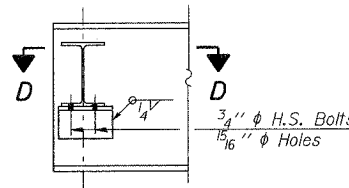
INTERIOR DIAPHRAGM D2 & D3
(D2 - 24 Required)
(D3 - 12 Required)



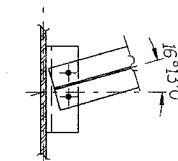
SECTION A-A
(At beams E.3 & W.3)



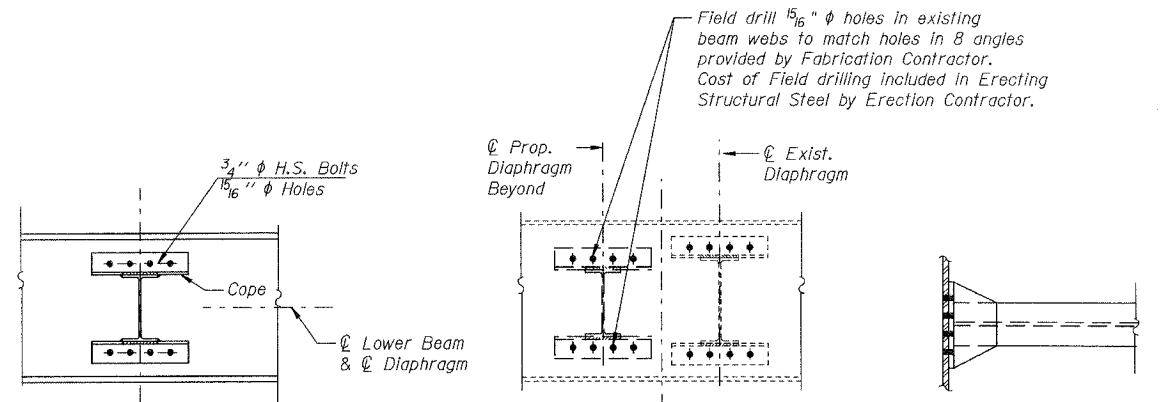
SECTION B-B
(At beams E.3 & W.3)



SECTION C-C
(At beams E.1, E.2, W.1 & W.2)



SECTION D-D



SECTION E-E

SECTION F-F

SECTION G-G

Note:

1. Two hardened washers shall be required over all oversize holes for diaphragms.

PLOT DATE = 05/15/06
 FILE NAME = 05/15/06...
 PLOT SCALE = 1/8"=1'-0"
 USER NAME = MJB

SHT. SC-21 OF 38

REVISIONS	
NAME	DATE

MORCOM, N.V., INC.
CONSULTING ENGINEERS
CHICAGO, ILLINOIS

ILLINOIS DEPARTMENT OF TRANSPORTATION
 FAI ROUTE 55
 US 30 (PLAINFIELD ROAD) TO LILY CACHE SLOUGH
 SB & NB I-55 OVER US RTE. 30, S.N. 099-0016 & 099-0017
 STA. 587+80.82, SECTION 2006-032 BY
 WILL COUNTY

DIAPHRAGM DETAILS

SCALE: DRAWN BY PA
 DATE 07/05/06 CHECKED BY MJK

TENG TENG & ASSOCIATES, INC.
ENGINEERS/ARCHITECTS/PLANNERS
CHICAGO, ILLINOIS