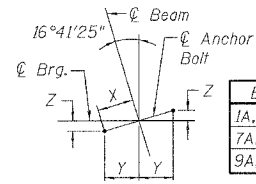


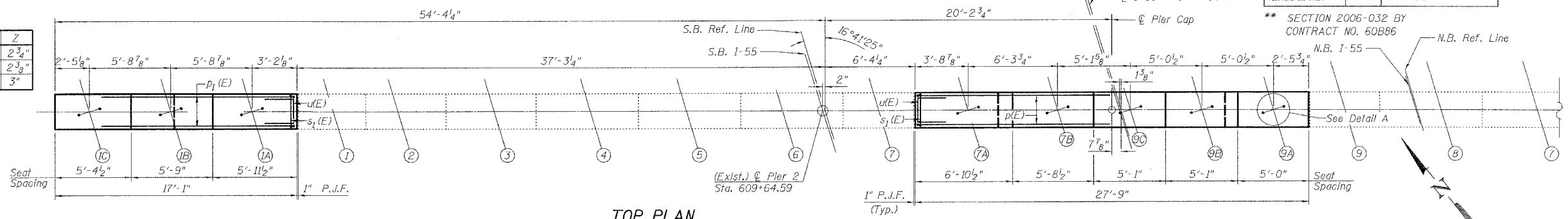
STATE OF ILLINOIS
DEPARTMENT OF TRANSPORTATION

ROUTE NO.	SECTION	COUNTY	SHEET NO.	TOTAL SHEETS	SHEET NO.
FAI-55	**	WILL	505	324	44 SHEETS

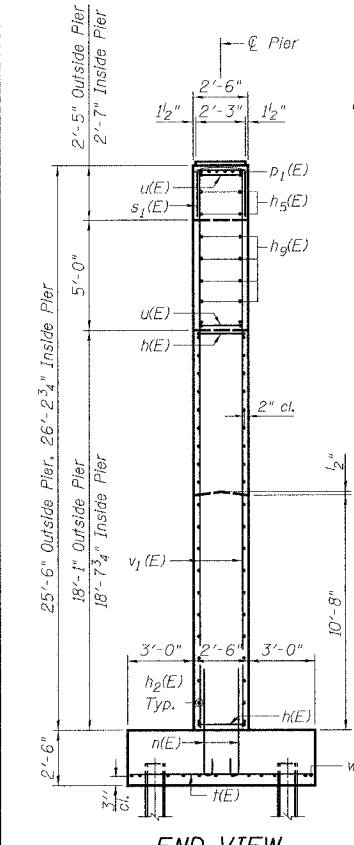


BEAM	X	Y	Z
1A, 1B, 1C	9 ³ / ₄ "	9 ³ / ₈ "	2 ³ / ₄ "
7A, 7B	8 ¹ / ₄ "	7 ⁷ / ₈ "	2 ³ / ₈ "
9A, 9B, 9C	10 ¹ / ₂ "	10"	3"

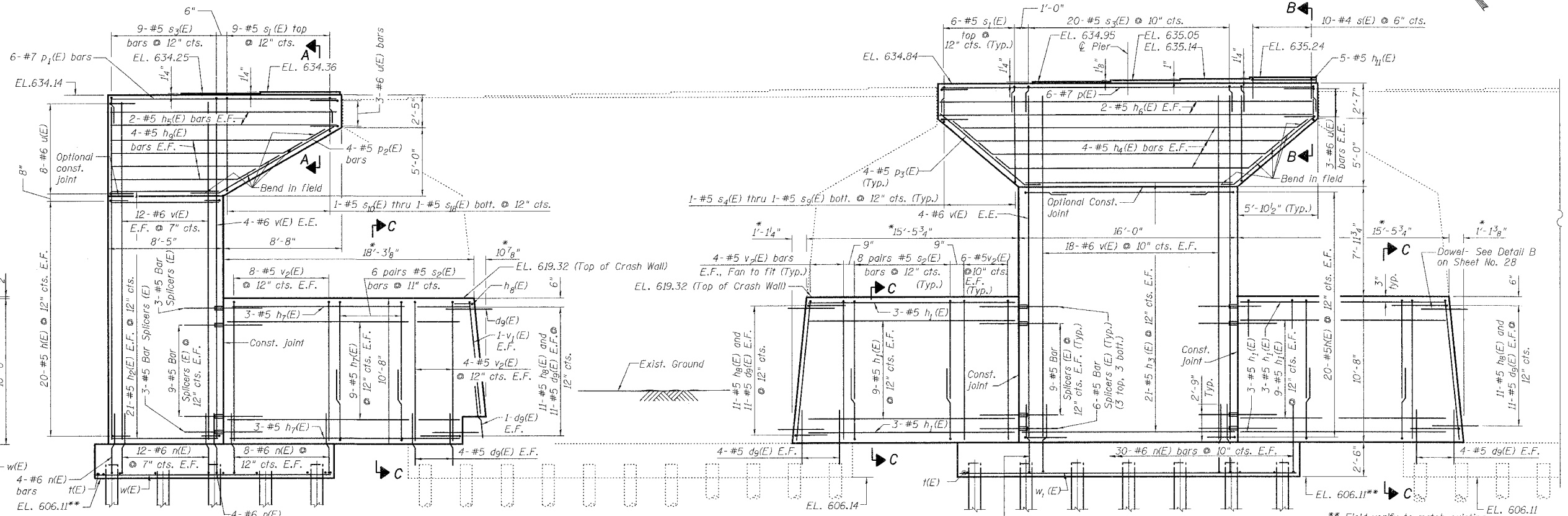
DETAIL A



TOP PLAN



END VIEW



ELEVATION
(Looking North)

LEGEND

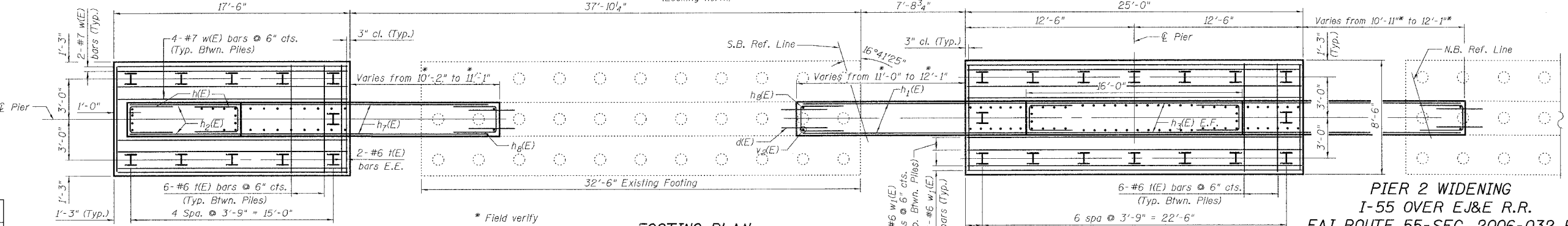
- P.J.F. Preformed Joint Filler
- E.F. Each Face
- E.E. Each End

MIN. BAR LAPS

#5	2'-2"
#6	2'-7"
#7	3'-5"

DESIGNED	P. PILARSKI
CHECKED	M. SHAIKH
DRAWN	P. PILARSKI
CHECKED	M. SHAIKH

Date: 6/30/2006



PILE DATA

FOOTING PLAN

Notes:

- All exposed edges shall have standard 3/4" chamfers except as noted.
- Space reinforcement bars in steps to miss anchor bolts.
- For details of Anchor Bolts, see Sheet No. 35.
- For details of Bar Splicers, see Sheet No. 36.
- Pour steps monolithically with cap.
- For Reinforcement Bar Schedule and Bill of Material, See Sheet 28.
- Reinforcement bars designated (E) shall be epoxy coated.
- For Sections A-A through C-C and Detail B, See Sheet 28



PIER 2 WIDENING
I-55 OVER EJ&E R.R.
FAI ROUTE 55-SEC. 2006-032 BY
WILL COUNTY
STA. 609+29.37
STRUCTURE NO. 099-0018 (NB)
STRUCTURE NO. 099-0019 (SB)

6/30/2006 4:55:55 PM C:\18817A\StructCAD\Pre-Final\I&E R.R\Final Bridge Contract\092206-60B86-000-000-027.dgn