

**STATE OF ILLINOIS
DEPARTMENT OF TRANSPORTATION**

ROUTE NO.	SECTION	COUNTY	SHEET NO.	SHEET	SHEET NO.
FAI-55	**	WILL	505	343	32 SHEETS

** SECTION 2006-032 BY
CONTRACT NO. 60B86

GENERAL NOTES:

- Fasteners shall be high strength bolts. Bolts $\frac{7}{8}$ " ϕ , open holes $\frac{15}{16}$ " ϕ , unless otherwise noted.
 - Expansion joint plates and attached bars shall be shop painted with the inorganic zinc rich primer.
 - Field welding of construction accessories will not be permitted to beams.
 - Anchor bolts shall be set before bolting diaphragms over supports.
 - The main load carrying member components subject to tensile stress shall conform to the Supplemental Requirements for Notch Toughness Zone 2. These components are the wide flange beams and all splice plate material except fill plates.
 - Reinforcement bars shall conform to the requirements of AASHTO M 31M, or M322 Grade 60.
 - Plan dimensions and details relative to existing structure have been taken from subject to nominal construction variations. It shall be the Contractor's responsibility to verify such dimensions and details in the field and make necessary approved adjustments prior to construction or ordering of materials. Such variations shall not be cause for additional compensation for a change in the scope of the work; however, the Contractor will be paid for the quantity actually furnished at the unit price for the work.
 - Bearing seat surfaces shall be constructed or adjusted to the designated elevations of $\frac{1}{8}$ inch. Adjustment shall be made either by grinding the surface or by shimming the bearing. Two $\frac{1}{8}$ inch adjusting shims, of the dimensions of the bottom bearing plate, shall be provided for each bearing in addition to all other plates or shims. For Type I Elastomeric Bearings, two $\frac{1}{8}$ inch adjusting shims shall be provided for each bearing and placed as detailed.
 - The contractor shall drive one test pile in a permanent location at each abutment as directed by the Engineer before ordering the remainder of piles.
 - Bridge Seat Sealer shall be applied to the seat area of both abutments.
 - Prior to pouring the new concrete deck, all loose rust, loose mill scale, and other loose detrimental foreign material shall be removed from the surfaces of the beams or girders in contact with concrete. The cost of this work will be included in the pay item covering removal of the existing concrete. All heavy rust and other tightly adhered potentially detrimental foreign matter shall also be removed from the surfaces of the beams or girders in contact with concrete. Tightly adhered paint may remain unless otherwise noted. This removal shall be accomplished by methods that will not damage the steel. The cost of this work will be paid for according to Article 109.04. All existing construction accessories welded to the top flange over the pier between the quarter points of the beams or girders shall be removed. The remaining weld shall be ground smooth and inspected for cracks using magnetic particle testing. Any cracks that can not be removed by grinding approximately $\frac{1}{4}$ inch deep shall be identified and reported to the Bureau of Bridges and Structures for further disposition. The cost of this work will be paid for according to Article 109.04.
 - The existing structural steel coating contains lead. The Contractor shall take appropriate to deal with the presence of lead on this project. Prepare the surface and paint the existing steel structures in areas that will be in contact with the new steel. See special provisions for "Cleaning and Painting Contact Surface Areas of Existing Steel Structures".
 - Partial depth saw cutting of the existing concrete deck over the top of the beam flanges shall be permitted. See Special Provision of Existing Non-Composite Bridge Decks.
 - The Organic Zinc-Rich/Epoxy/Urethane Paint System shall be used by the Fabrication Contractor for painting of new structural steel except where otherwise noted. The entire system shall be shop applied, with the exception that masked off connection surfaces, field installed fasteners and damaged areas shall be touched in the field. The color of the final finish coat for all new interior steel surfaces shall be gray, Munsell No. 5B 7/1. See Special Provision for "Cleaning and Painting New Metal Structures". The Erection Contractor shall use care when working with beams. Touch up in the field will be performed by the Erection Contractor. The cost for touch up painting shall be included in the contract unit price for Erecting Structural Steel.
 - Calculated weight of Structural Steel = 62,180 lbs.
 - All Construction joints shall be bonded.
- * These notes included in Mainline Contract for information only.

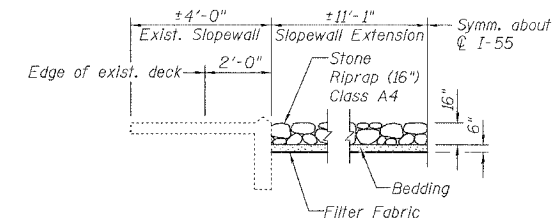
INDEX OF SHEETS

- General Plan & Elevation
- General Notes & Bill of Materials
- Stage Construction
- Top of Slab Elevation Layout
- Top of Slab Elevation I
- Top of Slab Elevation II
- NB Deck Plan & Section
- SB Deck Plan & Section
- Superstructure Details I
- Superstructure Details II
- Bridge Joint System - Expansion (Preformed Joint Seal)
- Bridge Joint System - Expansion (Alternate Strip Seal)
- Drainage Scupper, DS-II
- Framing Plan
- Structural Steel Details I
- Structural Steel Details II
- Elastomeric Bearing Assembly, Type I
- Elastomeric Bearing Assembly, Type II
- South Abutment Widening
- North Abutment Widening
- Abutment Details
- Pier 1 Widening
- Pier 2 Widening
- Pier 1 & 2 Details
- Anchor Bolt Details
- Bar Splicer Details
- Temporary Concrete Barrier
- Cantilever Farming Bracket
- Pile Details
- Boring Log I
- Boring Log II
- Boring Log III

TOTAL BILL OF MATERIAL

ITEM	UNIT	SUPER	SUB	TOTAL
Removal and Disposal of Unsuitable Material	Cu. Yd.		11	11
Granular Embankment, Special	Cu. Yd.		11	11
Porous Granular Embankment, Special	Cu. Yd.		54	54
Stone Riprap, Class A4	Sq. Yd.		270	270
Filter Fabric	Sq. Yd.		289	289
Concrete Removal	Cu. Yd.	115.2	26.2	141.4
Structure Excavation	Cu. Yd.		432	432
Floor Drains	Each	10		10
Preformed Joint Seal, 2 1/2"	Foot	120		120
Concrete Structures	Cu. Yd.		176	176
Concrete Superstructure	Cu. Yd.	214.0		214.0
Bridge Deck Grooving	Sq. Yd.	579		579
Protective Coat **	Sq. Yd.	1,631		1,631
Erecting Elastomeric Bearing Assembly, Type I	Each	4		4
Erecting Elastomeric Bearing Assembly, Type II	Each	4		4
Erecting Structural Steel	L. Sum	0.15		0.15
Furnishing and Erecting Structural Steel *	Pound	110		110
Reinforcement Bars, Epoxy Coated	Pound	50,300	14,410	64,710
Furnishing Metal Pile Shells 12"	Foot		288	288
Driving and Filling Shells	Foot		288	288
Test Pile Metal Shells	Each		2	2
Temporary Sheet Piling	Sq. Ft.		3,016	3,016
Name Plates	Each	2		2
Bridge Seat Sealer	Sq. Ft.		151	151
Geocomposite Wall Drain	Sq. Yd.		33	33
Pipe Underdrains For Structures 4"	Foot		98	98
Conduit Embedded In Structure, 2" Dia., Galvanized Steel	Foot		240	240
Bridge Joint System (Expansion), 1"	Foot		211.5	211.5
Drainage Scuppers DS-II	Each		2	2
Bar Splicers	Each		232	232

* For Anchor Bolts Only.
** Quantity shown includes existing construction.
Apply in accordance with Section 503.19 of the standard specifications.



SECTION B-B

STATION 710+34.86 REBUILT BY STATE OF ILLINOIS FAI RT. 55 SEC. 2006-032 BY LOADING HS20 & ALT. STR. NO. 099-0022	STATION 710+34.86 REBUILT BY STATE OF ILLINOIS FAI RT. 55 SEC. 2006-032 BY LOADING HS20 & ALT. STR. NO. 099-0023
---	---

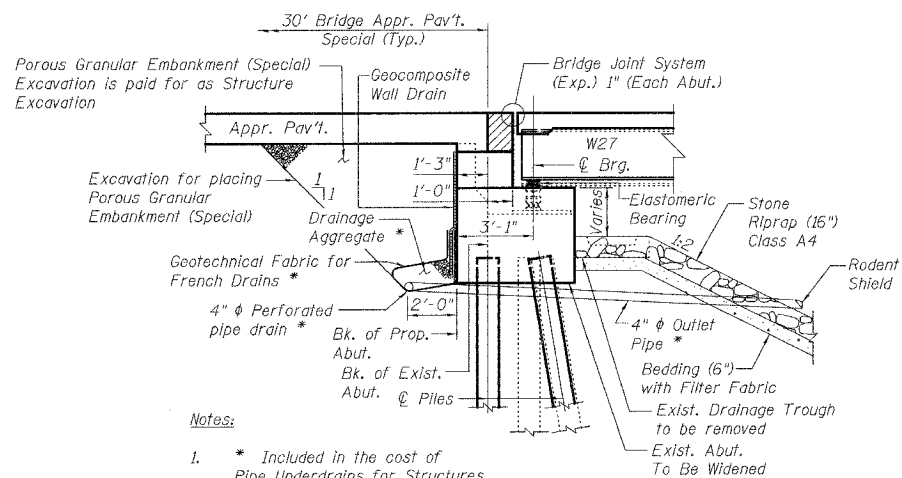
NAME PLATE
See Std. 515001

NAME PLATE
See Std. 515001

Notes:

- The new name plate for the SB structure shall be located next to the existing name plate. The name plate shall be attached to the existing concrete using concrete anchors and set in a bed of epoxy. Concrete anchors and epoxy shall be subject to approval of the Engineer. Cost included with Name Plate.
- The existing name plate for the NB structure shall be cleaned and relocated next to the new name plate. Cost included with Name Plate.

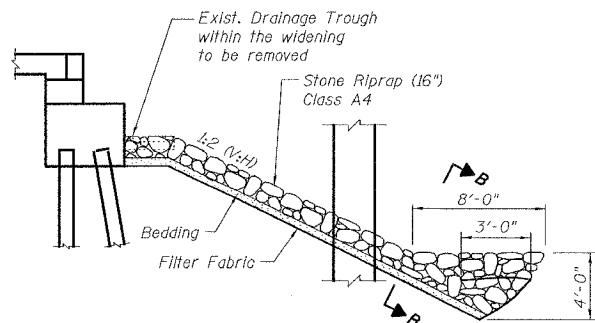
**GENERAL NOTES &
BILL OF MATERIAL
I-55 OVER MS (ABANDONED) RR
FAI ROUTE 55-SEC. 2006-032 BY
WILL COUNTY
STA. 710+34.86
STRUCTURE NO. 099-0022 (NB)
STRUCTURE NO. 099-0023 (SB)**



Notes:

- * Included in the cost of Pipe Underdrains for Structures.
- Connect 4" ϕ Perforated Pipe Drain to 4" ϕ Outlet Pipe and extend until it intersects and passes through slope wall. The end of the Outlet Pipe shall be protected by a permanent Rodent Shield. Rodent Shield shall be according to Section 601 of the Standard Specifications and cost shall be included with Pipe Underdrain for Structures, 4".

SECTION THRU ABUTMENTS
(Dimension ϕ Rt. L's)



SECTION THRU SLOPEWALL
(Dimension ϕ Rt. L's)

DESIGNED	S.CHELBIAN
CHECKED	J.GRAINAWI
DRAWN	S.CHELBIAN
CHECKED	J.GRAINAWI

Date: 7/21/2006