

STATE OF ILLINOIS
DEPARTMENT OF TRANSPORTATION

ROUTE NO.	SECTION	COUNTY	SHEET NO.	SHEET	SHEET NO.
FAI-55	**	WILL	505	351	32 SHEETS

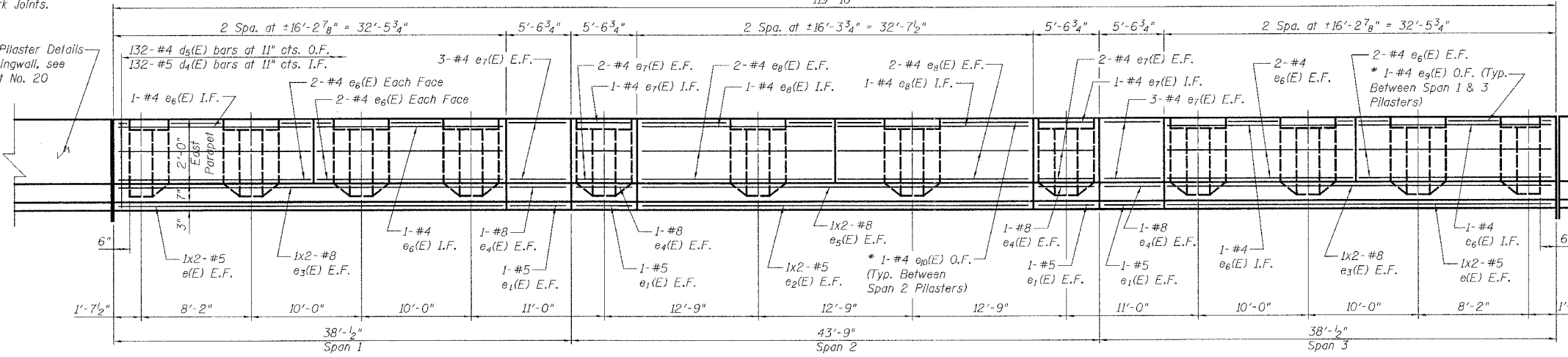
** SECTION 2006-032 BY
CONTRACT NO. 60B86

Note:

* e₃(E) & e₆(E) bars shall be cut in field to clear 1/2" Preformed Self Expanding Cork Joints.

For Pilaster Details on wingwall, see Sheet No. 20

For Pilaster Details on wingwall, see Sheet No. 20



INSIDE ELEVATION OF NB EAST PARAPET

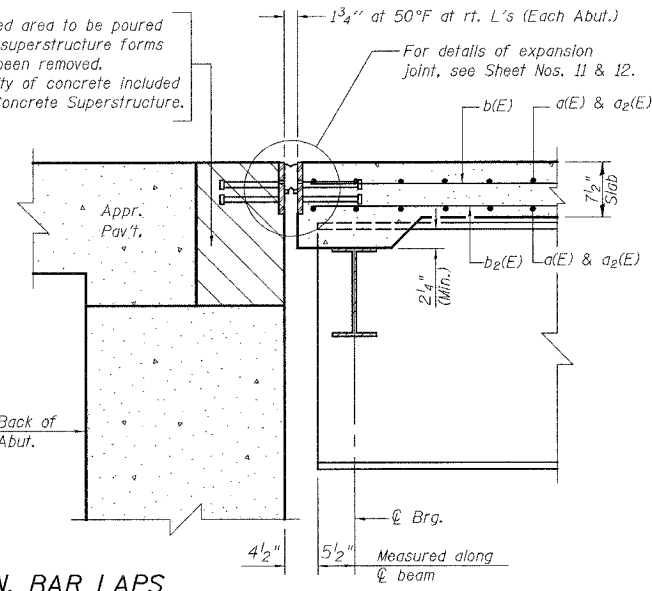
BILL OF MATERIAL
NB & SB SUPERSTRUCTURE

Bar	No.	Size	Length	Shape
a(E)	676	#6	21'-1"	—
a ₁ (E)	288	#6	4'-0"	—
a ₂ (E)	338	#5	6'-2"	—
a ₃ (E)	16	#5	1'-6"	—
b(E)	216	#5	31'-7"	—
b ₁ (E)	96	#6	14'-0"	—
b ₂ (E)	226	#5	25'-9"	—
d(E)	264	#5	3'-8"	—
d ₁ (E)	264	#4	3'-8"	—
d ₂ (E)	402	#5	2'-5"	—
d ₃ (E)	264	#4	3'-11"	—
d ₄ (E)	138	#5	3'-0"	—
d ₅ (E)	138	#4	3'-0"	—
d ₆ (E)	114	#4	3'-9"	—
d ₇ (E)	24	#4	4'-0"	—
d ₈ (E)	36	#5	4'-0"	—
e(E)	24	#5	17'-4"	—
e ₁ (E)	24	#5	5'-4"	—
e ₂ (E)	12	#5	17'-5"	—
e ₃ (E)	24	#8	18'-6"	—
e ₄ (E)	24	#8	5'-4"	—
e ₅ (E)	12	#8	18'-7"	—
e ₆ (E)	84	#4	16'-0"	—
e ₇ (E)	86	#4	5'-4"	—
e ₈ (E)	42	#4	16'-1"	—
e ₉ (E)	6	#4	5'-0"	—
e ₁₀ (E)	3	#4	7'-9"	—
s(E)	60	#4	2'-7"	—
s ₁ (E)	36	#5	4'-4"	—
s ₂ (E)	30	#5	8'-10"	—
s ₃ (E)	6	#5	7'-11"	—
Reinforcement Bars, Epoxy Coated		Pound	50,300	
Concrete Superstructure		Cu. Yds.	214.0	
Bridge Deck Grooving		Sq. Yds.	579	
Protective Coat *		Sq. Yds.	1,631	
Floor Drains		Each	10	
Preformed Joint Seal, 2 1/2"		Foot	120	
Conduit Embedded in Structure, 2" Dia., Galvanized Steel		Foot	240	

* Includes existing construction.

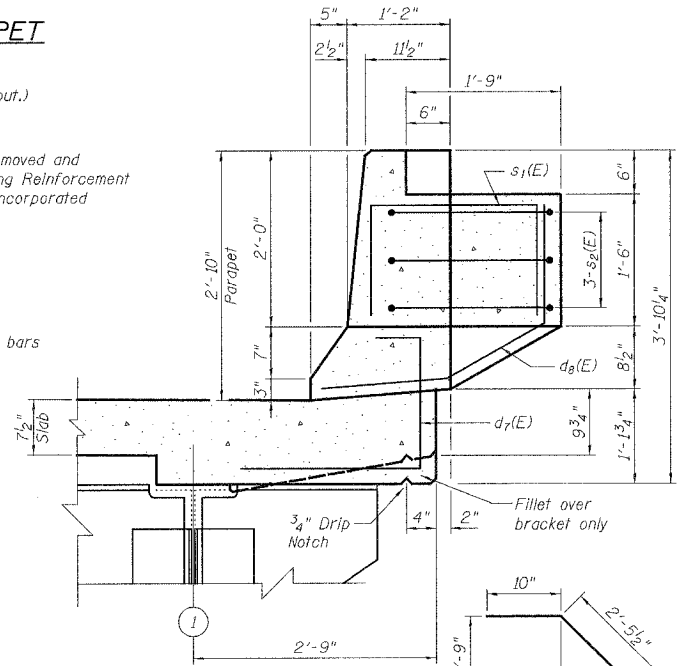
Hatched area to be poured after superstructure forms have been removed. Quantity of concrete included with Concrete Superstructure.

For details of expansion joint, see Sheet Nos. 11 & 12. Hatched area to be removed & replaced after superstructure forms have been removed. Quantity of concrete included with Concrete Superstructure.

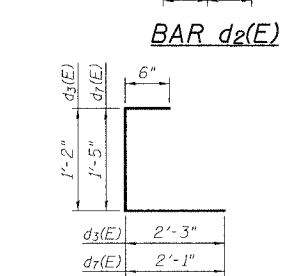


SECTION A-A

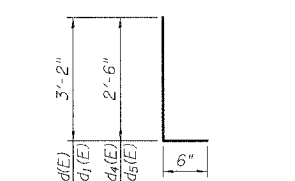
SECTION B-B



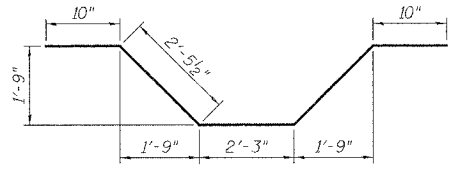
SECTION D-D
(Noise Abatement Wall Post, Segments, and Anchor Bolt Assembly not shown for clarity.)



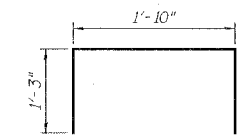
BAR d₂(E)



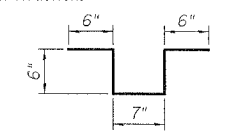
BARS d(E), d₁(E), d₄(E), & d₅(E)



BAR s₂(E)



BAR s₁(E)



BAR s(E)

MIN. BAR LAPS

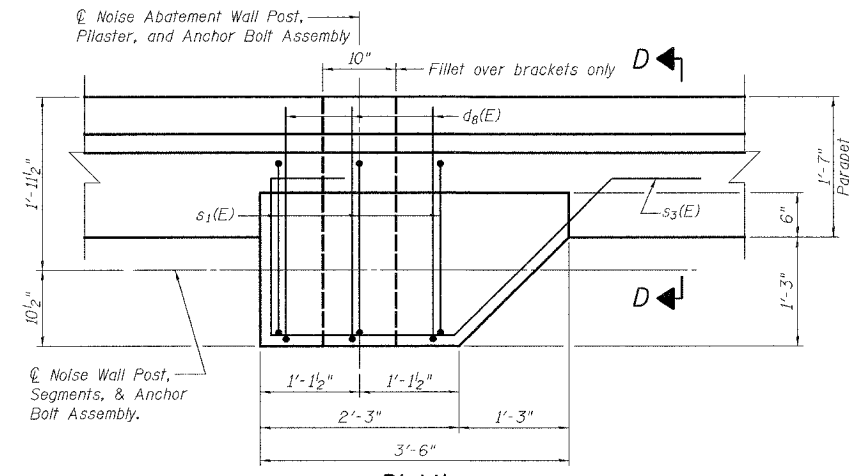
#4	1'-8"
#5	2'-2"
#8	4'-6"

Notes:

1. Reinforcement bars designated (E) shall be epoxy coated.
2. Bars indicated thus 1 x 2-#5 etc. indicates 1 line of bars with 2 lengths per line.
3. Cut longitudinal reinforcement to clear Drainage Scuppers & Floor Drains.
4. Work this sheet with Sheet Nos. 7, 8, & 9.

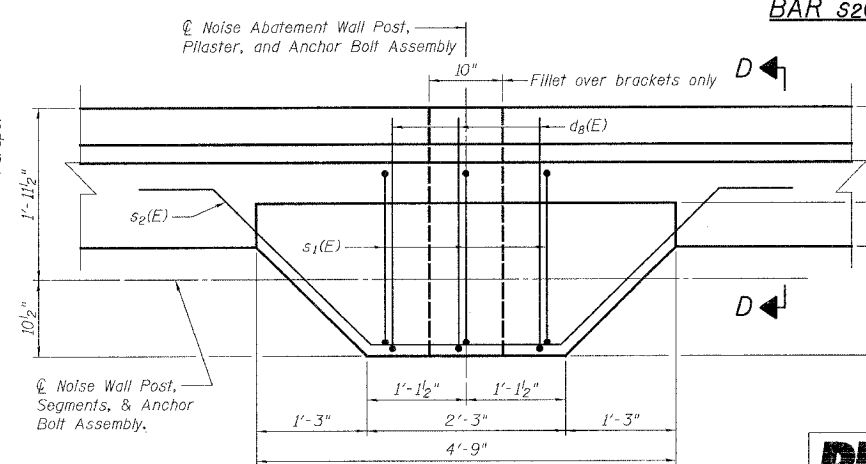
DESIGNED	S.CHELBIAN
CHECKED	J.GRAINAWI
DRAWN	S.CHELBIAN
CHECKED	J.GRAINAWI

Date: 6/30/2006

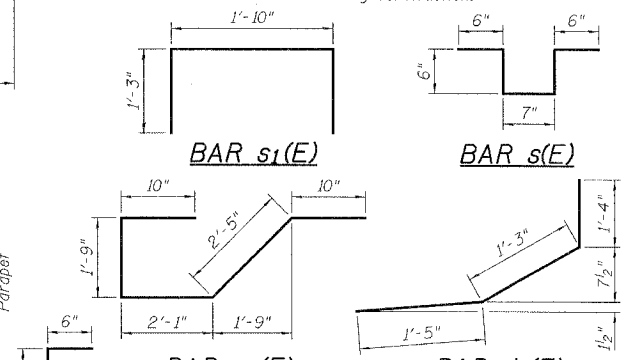


PLAN

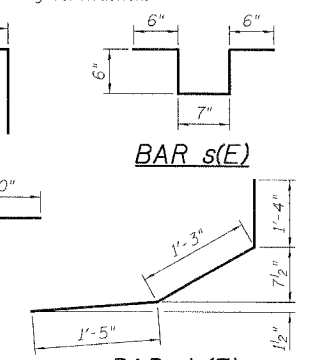
(Typical at both ends of bridge.)



PLAN



BAR s₃(E)



BAR d₈(E)



BAR d₆(E)

SUPERSTRUCTURE DETAILS II
I-55 OVER MS (ABANDONED) R.R.
FAI ROUTE 55-SEC. 2006-032 BY
WILL COUNTY
STA. 710+34.86
STRUCTURE NO. 099-0022 (NB)
STRUCTURE NO. 099-0023 (SB)



6/30/2006 4:18:25 PM C:\16817\AS\Struct\Case\Pre-Files\IMS RRF\Final Bridge Contract\022006-06B86-000-000-010.dgn