

STATE OF ILLINOIS  
DEPARTMENT OF TRANSPORTATION

ROUTE NO.	SECTION	COUNTY	TOTAL SHEETS	SHEET NO.	SHEET NO. 21
FAI-55	**	WILL	505	362	32 SHEETS
FED. ROAD DIST. NO. 7	ILLINOIS	FED. AID PROJECT-			

Note:  
Quantity of concrete in end post included with Concrete Superstructure on Sheet No. 10.

\*\* SECTION 2006-032 BY  
CONTRACT NO. 60BB6

**BILL OF MATERIAL  
SOUTH ABUTMENT**

Bar	No.	Size	Length	Shape
d <sub>8</sub> (E)	6	#5	4'-0"	
d <sub>9</sub> (E)	28	#5	3'-1"	
h <sub>1</sub> (E)	4	#5	25'-10"	
h <sub>1</sub> (E)	8	#6	22'-9"	
h <sub>2</sub> (E)	8	#6	33'-2"	
h <sub>3</sub> (E)	5	#4	11'-3"	
h <sub>4</sub> (E)	1	#4	11'-10"	
p(E)	10	#7	25'-10"	
s <sub>1</sub> (E)	6	#5	4'-4"	
s <sub>3</sub> (E)	6	#5	7'-11"	
s <sub>4</sub> (E)	34	#4	15'-3"	
v(E)	26	#5	2'-10"	
v <sub>1</sub> (E)	26	#4	2'-10"	
v <sub>2</sub> (E)	52	#4	3'-10"	
v <sub>3</sub> (E)	12	#6	2'-9"	

Porous Granular Embankment, Special	Cu. Yd.	27	
Stone Riprap, Class A4	Sq. Yd.	135	
Filter Fabric	Sq. Yd.	144	
Concrete Removal	Cu. Yd.	13.1	
Structure Excavation	Cu. Yd.	38	
Concrete Structures	Cu. Yd.	18.7	
Reinforcement Bars, Epoxy Coated	Pound	2,160	
Furnishing Metal Pile Shells 12"	Foot	144	
Driving and Filling Shells	Foot	144	
Test Pile Metal Shells	Each	1	
Bridge Seat Sealer	Sq. Ft.	65	
Geocomposite Wall Drain	Sq. Yd.	16	
Pipe Underdrain for Structures, 4"	Foot	49	

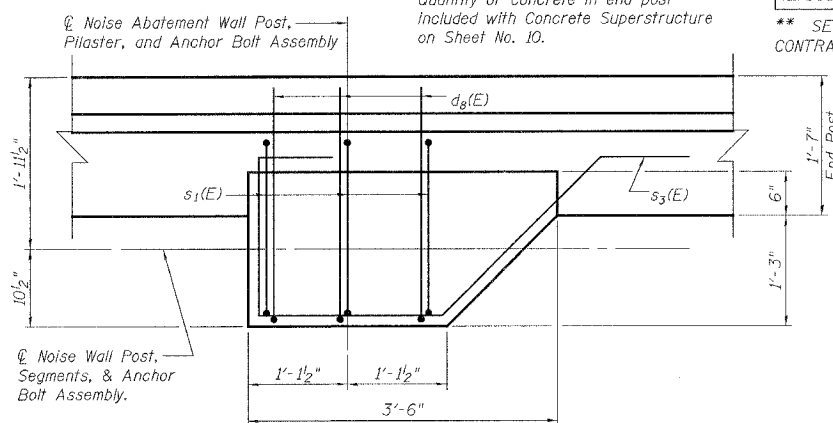
**BILL OF MATERIAL  
NORTH ABUTMENT**

Bar	No.	Size	Length	Shape
d <sub>8</sub> (E)	6	#5	4'-0"	
d <sub>9</sub> (E)	28	#5	3'-1"	
h <sub>1</sub> (E)	4	#5	25'-10"	
h <sub>1</sub> (E)	8	#6	22'-9"	
h <sub>2</sub> (E)	8	#6	33'-2"	
h <sub>3</sub> (E)	5	#4	11'-3"	
h <sub>4</sub> (E)	1	#4	11'-10"	
p(E)	10	#7	25'-10"	
s <sub>1</sub> (E)	6	#5	4'-4"	
s <sub>3</sub> (E)	6	#5	7'-11"	
s <sub>4</sub> (E)	34	#4	15'-3"	
v(E)	26	#5	2'-10"	
v <sub>1</sub> (E)	26	#4	2'-10"	
v <sub>2</sub> (E)	52	#4	3'-10"	
v <sub>3</sub> (E)	12	#6	2'-9"	

Porous Granular Embankment, Special	Cu. Yd.	27	
Stone Riprap, Class A4	Sq. Yd.	135	
Filter Fabric	Sq. Yd.	145	
Concrete Removal	Cu. Yd.	13.1	
Structure Excavation	Cu. Yd.	38	
Concrete Structures	Cu. Yd.	19.5	
Reinforcement Bars, Epoxy Coated	Pound	2,170	
Furnishing Metal Pile Shells 12"	Foot	144	
Driving and Filling Shells	Foot	144	
Test Pile Metal Shells	Each	1	
Bridge Seat Sealer	Sq. Ft.	66	
Geocomposite Wall Drain	Sq. Yd.	17	
Pipe Underdrain for Structures, 4"	Foot	49	

ABUTMENT DETAILS  
I-55 OVER MS (ABANDONED) R.R.  
FAI ROUTE 55-SEC. 2006-032 BY  
WILL COUNTY  
STATION 710+34.86  
STRUCTURE NO. 099-0022 (NB)  
STRUCTURE NO. 099-0023 (SB)

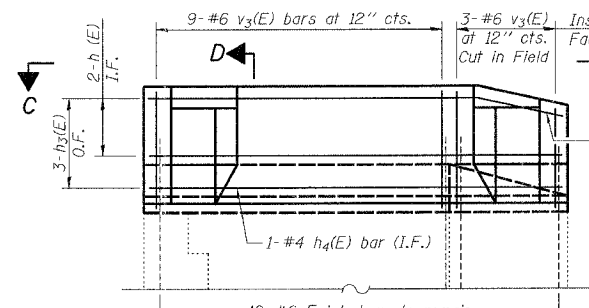
**NOISE ABATEMENT WALL PLAN**  
(Typical at North & South Abutment)



- Notes:
- All exposed edges shall have standard 3/4" chamfers except as noted.
  - Space reinforcement bars in steps to miss anchor bolts.
  - Pour steps monolithically with cap.
  - For details of Anchor Bolts, see Sheet No. 25.
  - For details of Bar Splicers, see Sheet No. 26.
  - For details of Noise Abatement Wall Anchor Bolt Assembly see Sheet No. 9.
  - Existing reinforcement extending into the removal area shall be cleaned, straightened and incorporated into the new construction. Any reinforcement bars that are damaged during concrete removal shall be replaced with an approved bar splicer or anchorage system. Cost shall be included with Concrete Removal.
  - Elevations shown on existing structure were taken from survey data, unless noted otherwise. Contractor shall verify all existing dimensions in field prior to ordering any material.
  - Reinforcement bars designated (E) shall be epoxy coated.
  - Bar indicated thus 4x3-#4 etc. indicates 4 lines of bars with 3 equal lengths per line.
  - Work this sheet with Sheets 19 and 20.

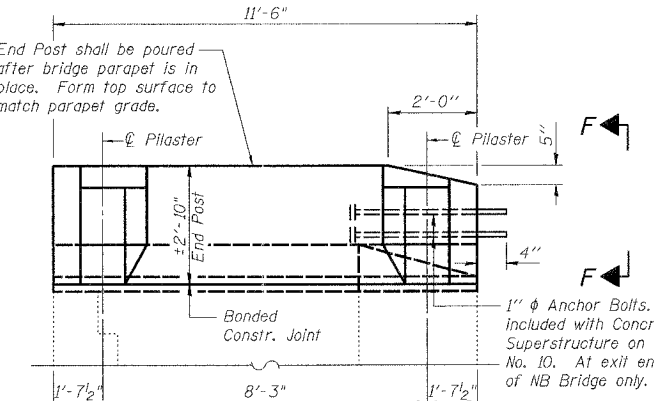
**SECTION D-D**

(Noise Abatement Wall Post, Segments, and Anchor Bolt Assembly not shown for clarity.)

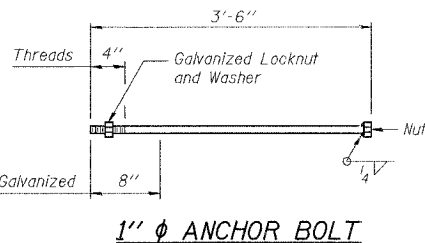


**WINGWALL ELEVATION**

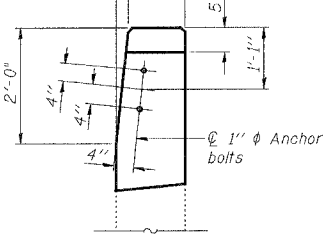
(Noise Abatement Wall Pilaster reinforcement not shown for clarity.)



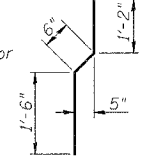
**WINGWALL ELEVATION**  
(Showing Dimensions)



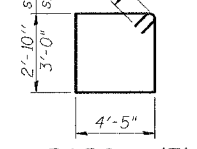
**VIEW F-F**



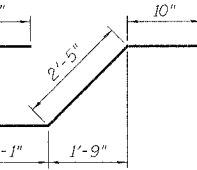
**BAR v1(E)**



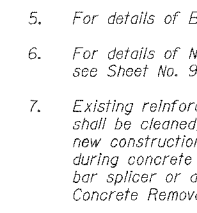
**BARS s4(E) & s5(E)**



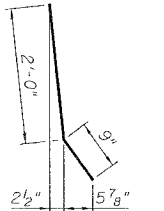
**BAR s3(E)**



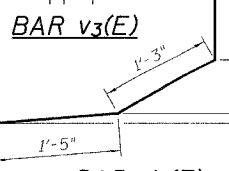
**BAR h4(E)**



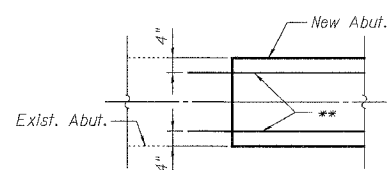
**BAR v3(E)**



**BAR d8(E)**



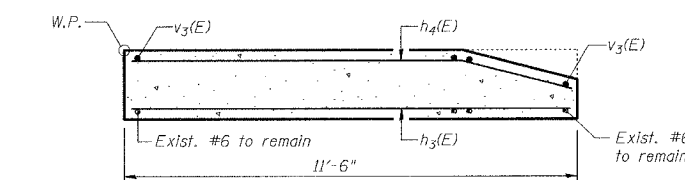
**SECTION B-B**



**DETAIL B**

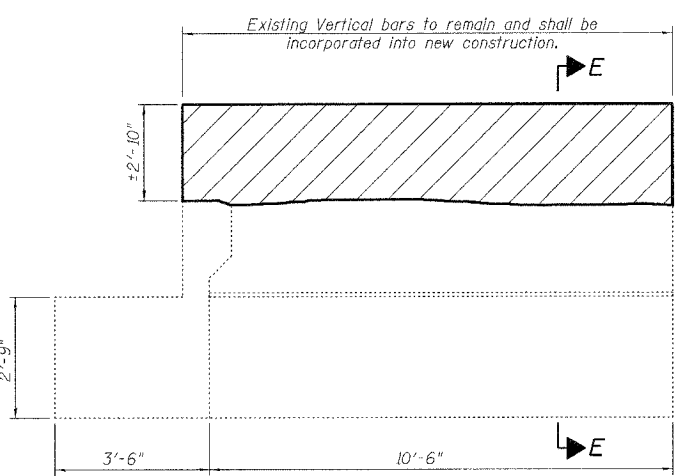
\*\* Drill and grout #5 d<sub>9</sub>(E) bars in 9" min. drilled holes according to Section 584 of the Standard Specifications. Method and grout are subject to the approval of the Engineer. Cost included with Reinforcement Bars, Epoxy Coated.

**SECTION A-A**



**SECTION C-C**

(Noise Abatement Wall Pilasters not shown for clarity.)



**WINGWALL REMOVAL DETAIL**

DESIGNED	P. PILARSKI
CHECKED	J. BRISBOIS
DRAWN	S. CHELBIAN
CHECKED	J. BRISBOIS

**MIN. BAR LAPS**

#4	1'-8"
#5	2'-2"
#6	2'-7"

Date: 6/30/2006



6/30/2006 4:21:05 PM C:\16817A\StructCAD\Pre-Final\MS RRI\Final Bridge Contract\092206-06B6-000-00-021.dgn