

B.M. 3208 -  
 Square cut on S. end of a headwall of a 30" CMP under E. Frontage Rd. and about 1/4 mile  
 N. of Renwick Rd.  
 El. 607.15

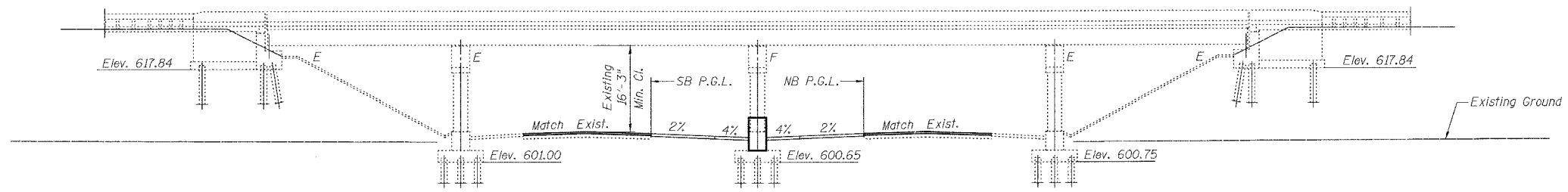
STATE OF ILLINOIS  
 DEPARTMENT OF TRANSPORTATION

ROUTE NO.	SECTION	COUNTY	TOTAL SHEETS	SHEET NO.	SHEET NO. /
FAI 55	**	WILL	505	390	5 SHEETS

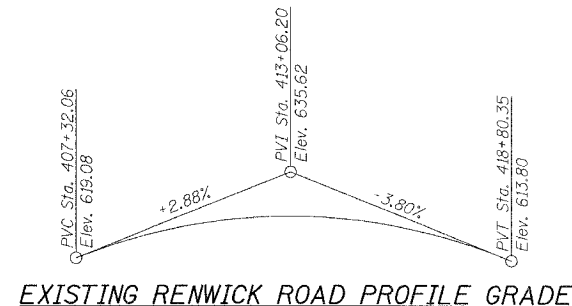
\*\* SECTION 2006-032 BY  
 CONTRACT NO. 60B86

Existing Structure -  
 Structure No. 099-0212 was rehabilitated as Renwick Road Section 99-1HB 3-BR in 2002.  
 The Existing structure is 188'-6" Bk. to Bk. of Abutments and is a four-span structure consisting  
 of a 38'-8 3/4" wide reinforced concrete deck supported on a continuous steel wide flange beam  
 superstructure. The existing substructure was rehabilitated and incorporated into the 2002  
 improvement and consists of stub type abutments and concrete piers supported on a pile foundation.

Salvage -  
 None



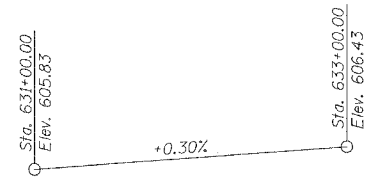
**ELEVATION**



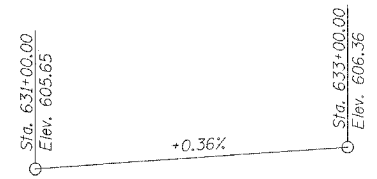
**EXISTING RENWICK ROAD PROFILE GRADE**

**SCOPE OF WORK**

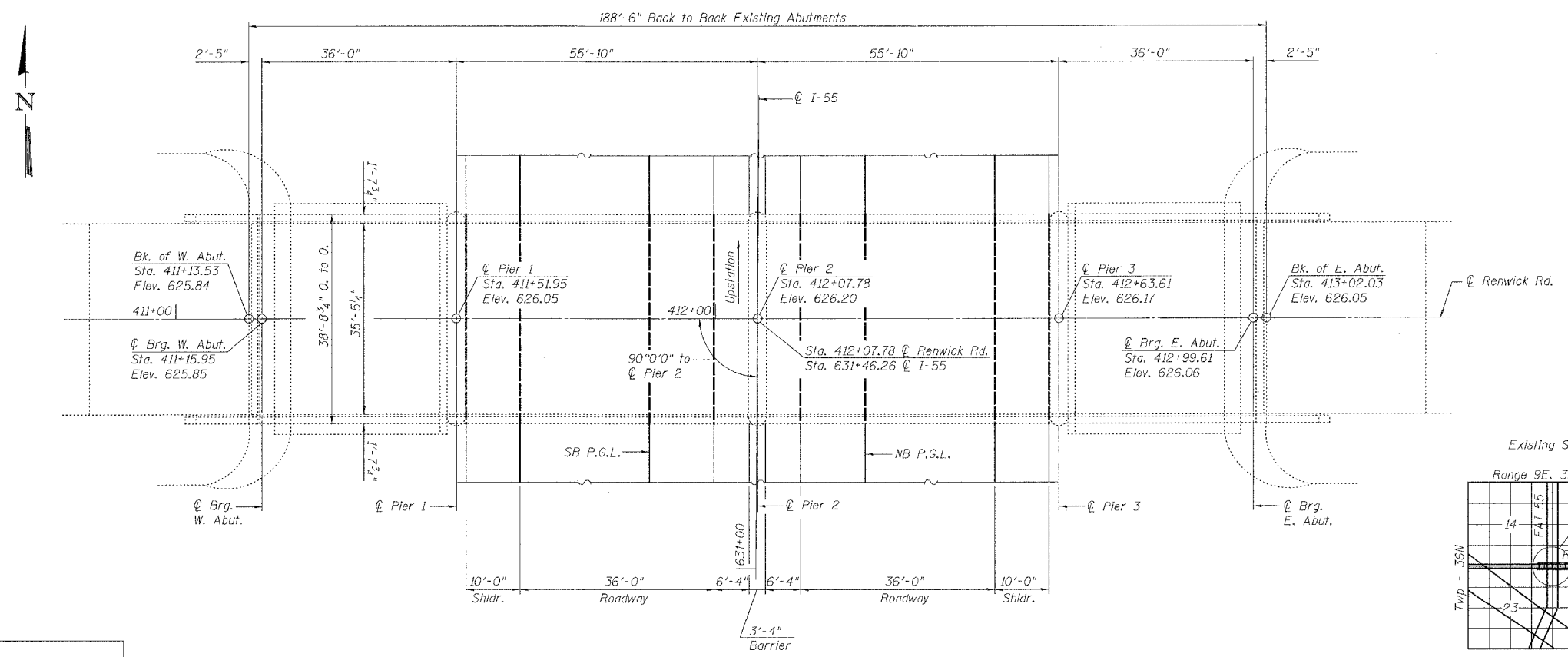
1. Repair substructure defects at Pier 1, Pier 2, & Pier 3 with Structural Repair of Concrete and/or Epoxy Crack Sealing.
2. The Pier 2 Crashwall will be extended to a height equal to 42" from edge of pavement to match the proposed I-55 mainline median barrier configuration.



**SB I-55 PROFILE GRADE**



**NB I-55 PROFILE GRADE**



**PLAN**

**DESIGN SPECIFICATIONS**

AASHTO 2002

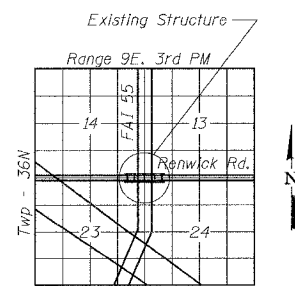
**LOADING HS20-44**

Allow 50#/Sq. Ft. for future wearing surface.

**DESIGN STRESSES**

FIELD UNITS

$f'_c = 3,500$  psi  
 $f_y = 60,000$  psi (reinforcement)



**LOCATION SKETCH**



Signed Jamal I. Grainawi  
 Jamal I. Grainawi, S.E., IL Lic. No. 081-005361  
 Expires 11-30-2006  
 Date 07-25-2006

GENERAL PLAN AND ELEVATION  
 RENWICK ROAD OVER I-55  
 SECTION 2006-032 BY  
 WILL COUNTY  
 STA. 412+07.78  
 STRUCTURE NO. 099-0212



DESIGNED	S.CHELBIAN
CHECKED	J.GRAINAWI
DRAWN	D.C.PATEL
CHECKED	J.GRAINAWI

Date: 7/21/2006

7/25/2006 2:08:38 PM G:\18617\AS\Struct\Cadd\Pre-Final\RENWICK\Final Plans\02206-60B86-00-00-00-01.dgn