

STATE OF ILLINOIS
DEPARTMENT OF TRANSPORTATION

ROUTE NO.	SECTION	COUNTY	SHEET NO.	SHEET	SHEET NO.
FAT 55	**	WILL	505	393	5 SHEETS
FED. ROAD DIST. NO. 7	ILLINOIS	FED. AID PROJECT			

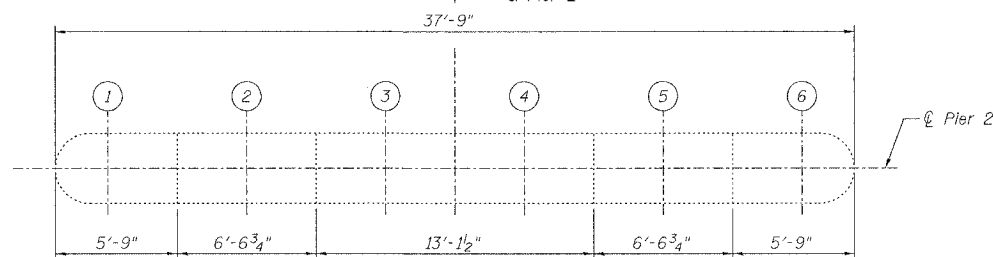
** SECTION 2006-032 BY
CONTRACT NO. 60B86

Notes:

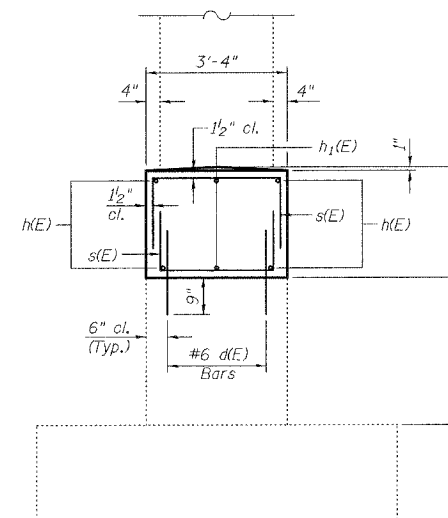
- Reinforcement designated "(E)" shall be epoxy coated.
- Drill and grout #6 d(E) in 9" min. drilled holes according to Section 584 of the Standard Specifications. Method and grout are subject to the approval of the Engineer. Cost included with Reinforcement Bars, Epoxy Coated.
- Existing reinforcement extending into the removal area shall be cleaned, straightened, and incorporated into the new construction. Any reinforcement bars that are damaged during concrete removal shall be replaced with an approved bar splicer or anchorage system. Cost shall be included with Concrete Removal.
- Minimum lap shall be 1'-8" for #4 bars & 2'-2" for #5 bars.

LEGEND

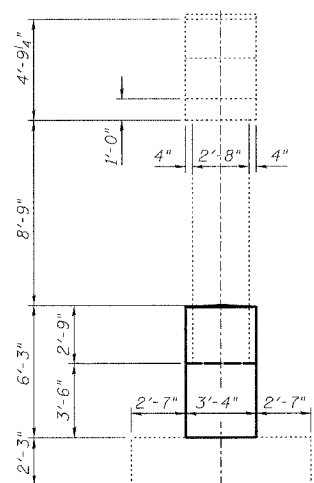
	Structural Repair of Concrete (Depth equal to or less than 5")
	Concrete Removal



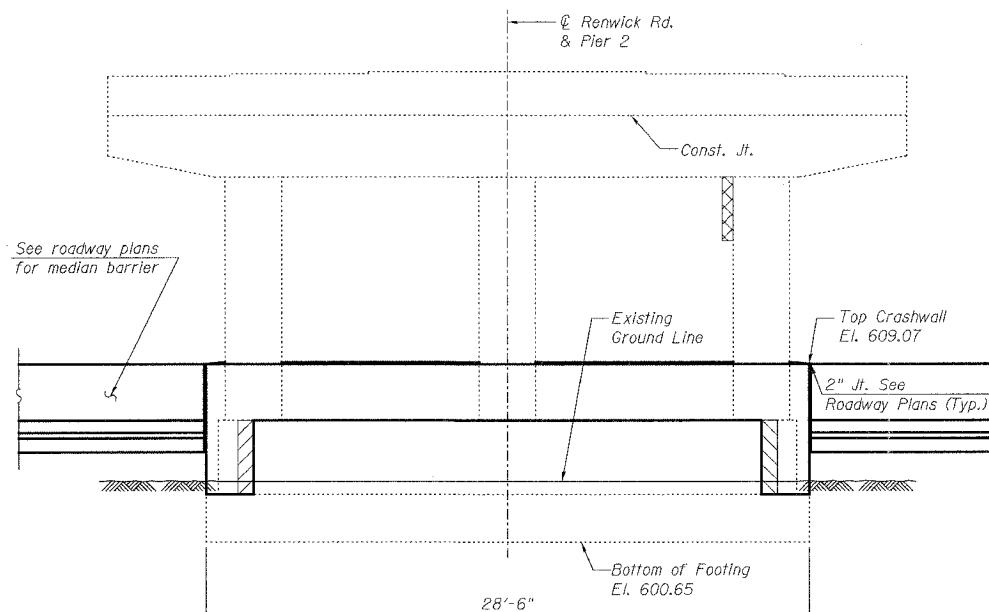
TOP PLAN



SECTION A-A

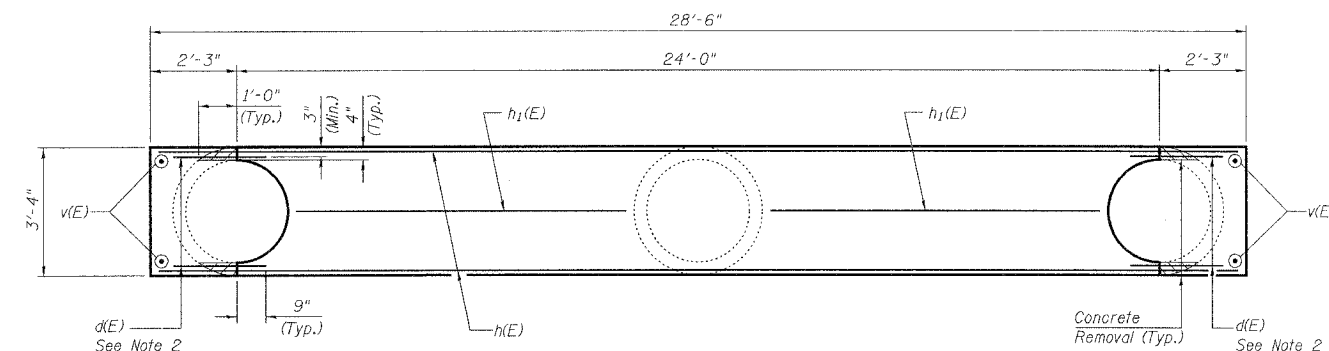


END VIEW
(Looking South)
(Reinforcement Not Shown)

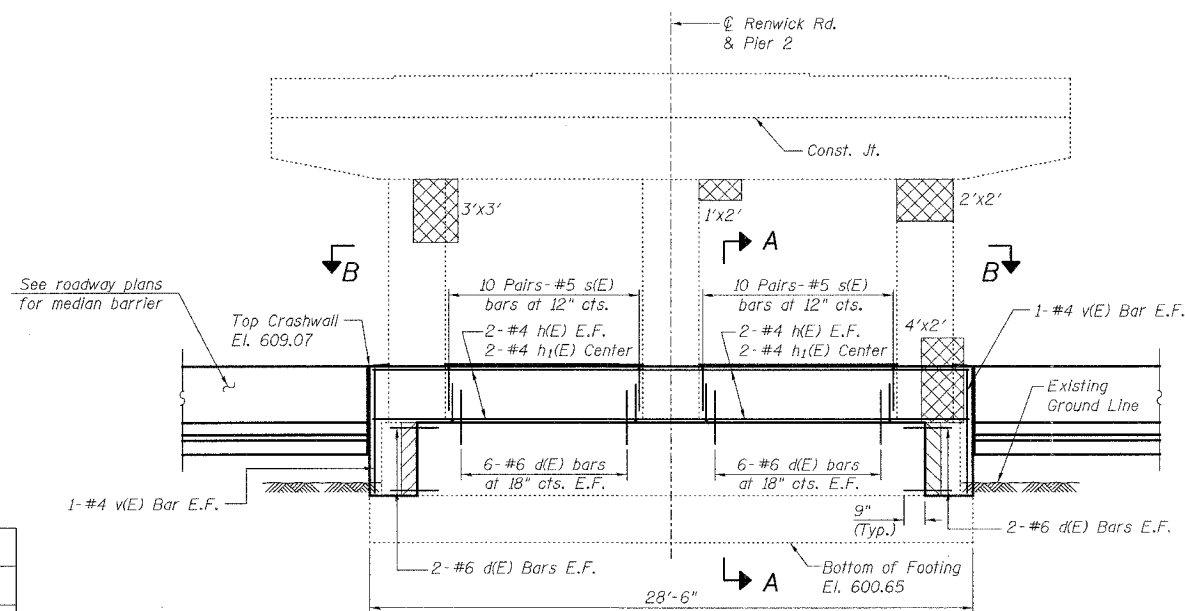


PIER ELEVATION

(Looking East)
(Reinforcement Not Shown)

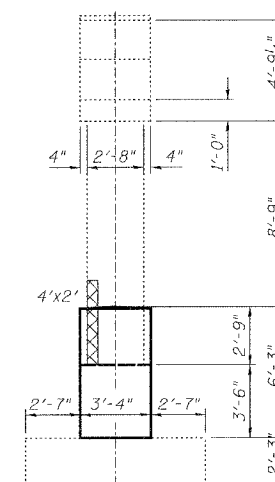


SECTION B-B

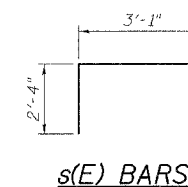


PIER ELEVATION

(Looking West)
(Reinforcement Shown)



END VIEW
(Looking North)
(Reinforcement Not Shown)



BILL OF MATERIAL

Bar	No.	Size	Length	Shape
d(E)	32	#6	2'-9"	—
h(E)	4	#4	28'-3"	—
h1(E)	4	#4	9'-1"	—
v(E)	4	#4	5'-11"	—
s(E)	40	#5	7'-9"	⌊
Item		Unit	Total	
Concrete Structures		Cu. Yd.	9.8	
Concrete Removal		Cu. Yd.	0.2	
Reinforcing Bars, Epoxy Coated		Pound	580	
Structural Repair of Concrete (Depth Equal to or Less Than 5")		Sq. Ft.	23.0	

PIER 2 REPAIR DETAILS
RENWICK ROAD OVER I-55
SECTION 2006-032 BY
WILL COUNTY
STA. 412+07.78
STRUCTURE NO. 099-0212



DESIGNED	S.CHELBIAN
CHECKED	J.GRAINAWI
DRAWN	D.C.PATEL
CHECKED	J.GRAINAWI

Date: 7/21/2006