

STATE OF ILLINOIS
DEPARTMENT OF TRANSPORTATION

ROUTE NO.	SECTION	COUNTY	DISTRICT	SHEET NO.
F.A.I. 55	2006-032 BY	WILL	505	401
FED. ROAD DIST. NO.		ILLINOIS	FED. AID PROJECT-	
CONTRACT #: 60886				

SHEET NO. S-2
S-10 SHEETS

INDEX OF SHEETS

- S-1 GENERAL PLAN & ELEVATION
- S-2 GENERAL NOTES, BILL OF MATERIALS & INDEX OF SHEETS
- S-3 STAGE CONSTRUCTION DETAILS
- S-4 STAGE CONSTRUCTION DETAILS
- S-5 TEMPORARY SHEET PILING DETAILS
- S-6 END SECTION DETAILS
- S-7 END SECTION DETAILS
- S-8 END SECTION AND HEADWALL DETAILS
- S-9 TEMPORARY CONCRETE BARRIERS FOR STAGE CONSTRUCTION
- S-10 SOIL BORINGS

TOTAL BILL OF MATERIAL

ITEM	UNIT	TOTAL
Removal and Disposal of Unsuitable Materials	Cu. Yd.	563
Porous Granular Embankment	Cu. Yd.	563
Stone Riprap, Class A4	Sq. Yd.	130
Filter Fabric	Sq. Yd.	130
Removal of Existing Structures	Each	2
Temporary Sheet Piling	Sq. Ft.	4157
Name Plates	Each	1
Box Culvert End Sections	Each	2
Precast Concrete Box Culvert 12' x 6' (M 273)	Foot	372
Precast Concrete Box Culvert 12' x 7' (M 273)	Foot	186

GENERAL NOTES

PRECAST CONCRETE BOX CULVERT sections shall conform to the requirements of Article 540.06 of the Standard Specifications and the applicable requirements of AASHTO M 273.

Fill = varies from 1'-0" to 5'-8" (for Ultimate Roadway profile grade anticipated in the future)

Shop plans for the PRECAST CONCRETE BOX CULVERT sections shall be submitted according to the requirements of Article 504.04.

Lifting holes shall be filled with concrete plugs and mastic after box sections are in place.

Excavation behind existing abutment walls shall be performed before removing the existing superstructure. The Contractor shall sawcut the existing abutments at the stage removal line before Stage I removal.

All construction joints shall be bonded.

If the Contractor chooses to alter the temporary cantilevered sheet piling design requirements shown on the plans, a design submittal sealed by a State of Illinois Structural Engineer including plan details and calculations will be required for review and acceptance by the Engineer.

The Contractor shall connect the first sheet piling to the existing abutment wall to ensure stability of sheets driven to the top of the existing footing. This connection shall be reviewed and accepted by the Engineer and included in the cost for Temporary Sheet Piling.

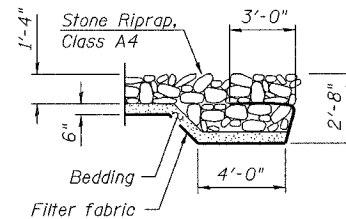
Hard driving may be encountered during the sheet piling installation. The Contractor shall provide the appropriate driving equipment for the soil condition indicated on the boring logs.

Plan dimensions and details relative to existing structure have been taken from existing plans and are subject to nominal construction variations. It shall be the Contractor's responsibility to verify such dimensions and details in the field and make necessary approved adjustments prior to construction or ordering of materials. Such variations shall not be cause for additional compensation for a change in the scope of the work, however, the Contractor will be paid for the quantity actually furnished at the unit price for the work.

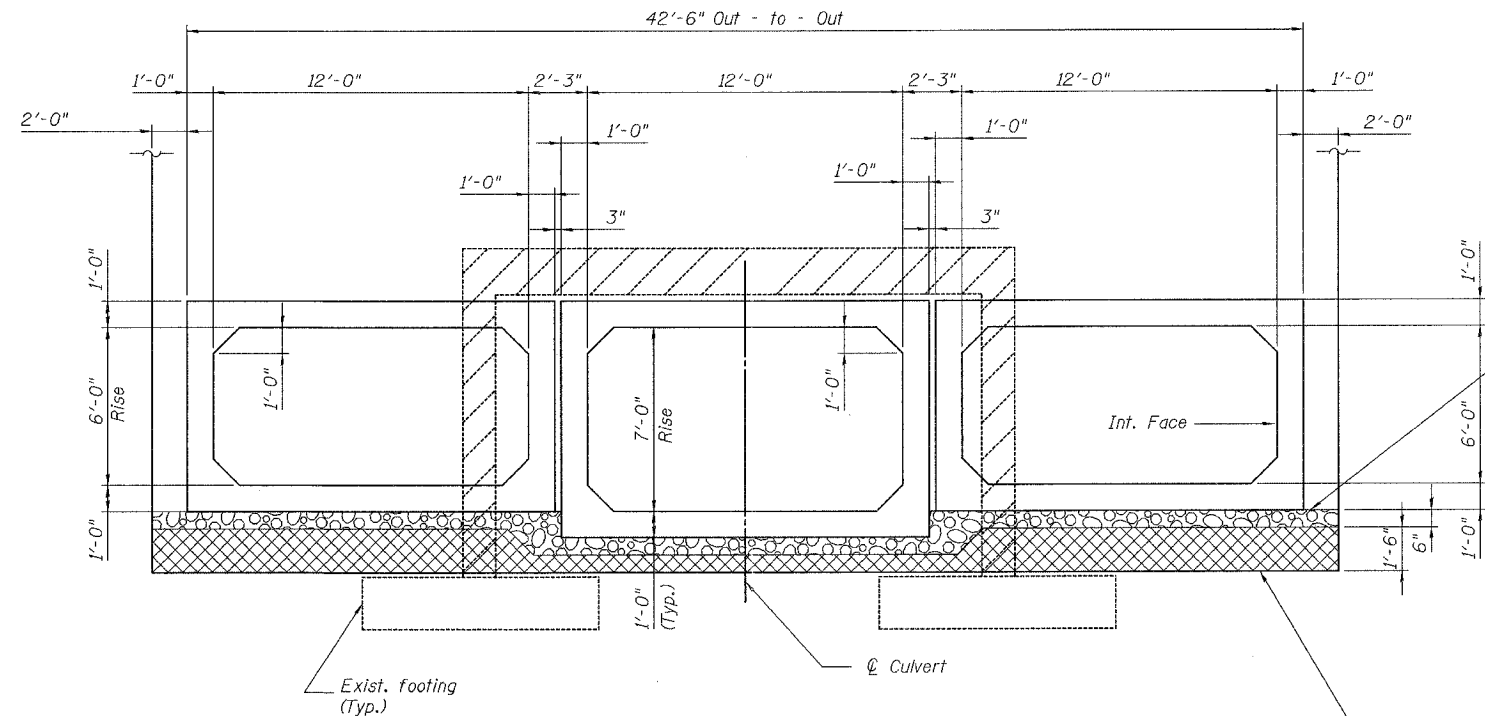
Reinforcement bars shall conform to the requirements of AASHTO M 31 or M 322, Grade 60.

The estimated quantity for Reinforcement Bars is 100,150 pounds. Cost is included in BOX CULVERT END SECTIONS.

The estimated quantity for Epoxy Coated Reinforcement Bars, is 390 pounds. Cost is included in BOX CULVERT END SECTIONS.



**FLANK STONE RIPRAP
TREATMENT DETAIL**



Excavation, Bedding and Backfill shall be provided in accordance with Article 540, Precast Concrete Box Culverts and Box Culvert End Sections.

Removal and Disposal of Unsuitable Material to approx. Elev. 603. Backfill with Porous Granular Embankment to bedding elevation.

PRECAST CONCRETE BOX CULVERT

CROSS SECTION

AASHTO M 273

Reinforcement must conform to AASHTO M273 and the shop drawings
Horizontal Dimensions @ Rt. L's to ϕ Culvert

Indicates portions of Existing Structure to be removed

STATION 772+61.10
BUILT BY
STATE OF ILLINOIS
F.A.I. RT. 55
SEC. 2006-032 BY
LOADING HS20 & ALT.
STR. NO. 099-0407

NAME PLATE
See Std. 515001

DESIGNED	M Harding
CHECKED	N Fakroddin
DRAWN	M Williams
CHECKED	N Fakroddin

REVISIONS	
NAME	DATE



ILLINOIS DEPARTMENT OF TRANSPORTATION
GENERAL NOTES, BILL OF MATERIAL & INDEX OF SHEETS
I-55 OVER
LILY CACHE SLOUGH
F.A.I. ROUTE 55 SECTION 2006-032 BY
WILL COUNTY
STA. 772+61.10
SN 099-0407
DATE 07-05-2006

COMPANY NAME, SEC. NO., PROJECT CONTACT, PROJECT NO., DATE, DRAWN BY, CHECKED BY, DESIGNED BY, SCALE, SHEET NO., SHEETS, CONTRACT NO., COUNTY, DISTRICT, ROAD DIST. NO., PROJECT NO., CONTRACT NO.