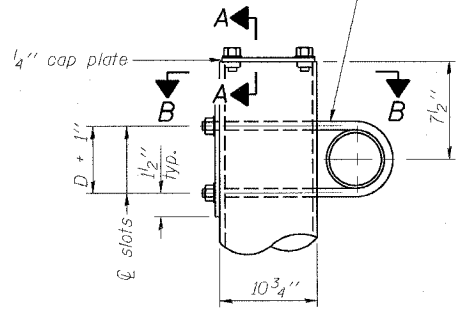


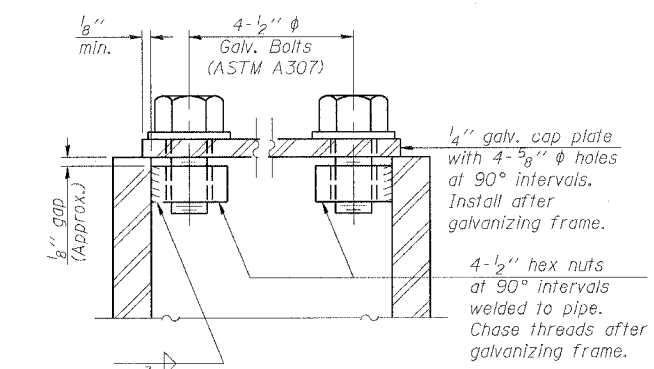
STATE OF ILLINOIS
DEPARTMENT OF TRANSPORTATION

ROUTE NO.	SECTION	COUNTY	SHEET NO.	SHEET TOTAL
F.A.I. RTE. 90/94		COOK	565	260
FED. ROAD DIST. NO. 1	ILLINOIS	FED. AID PROJECT		
10816, ETC., 2394.6-1(F) R-10			62301	

3/4" φ stainless steel U-bolt.
Provide two washers and two hexagon locknuts. (4)
1 5/16" x 2" slots on 10" φ pipe.
(4 slots required per pipe)

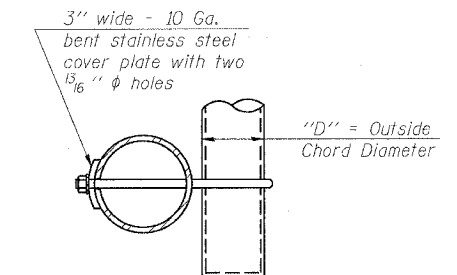


DETAIL A

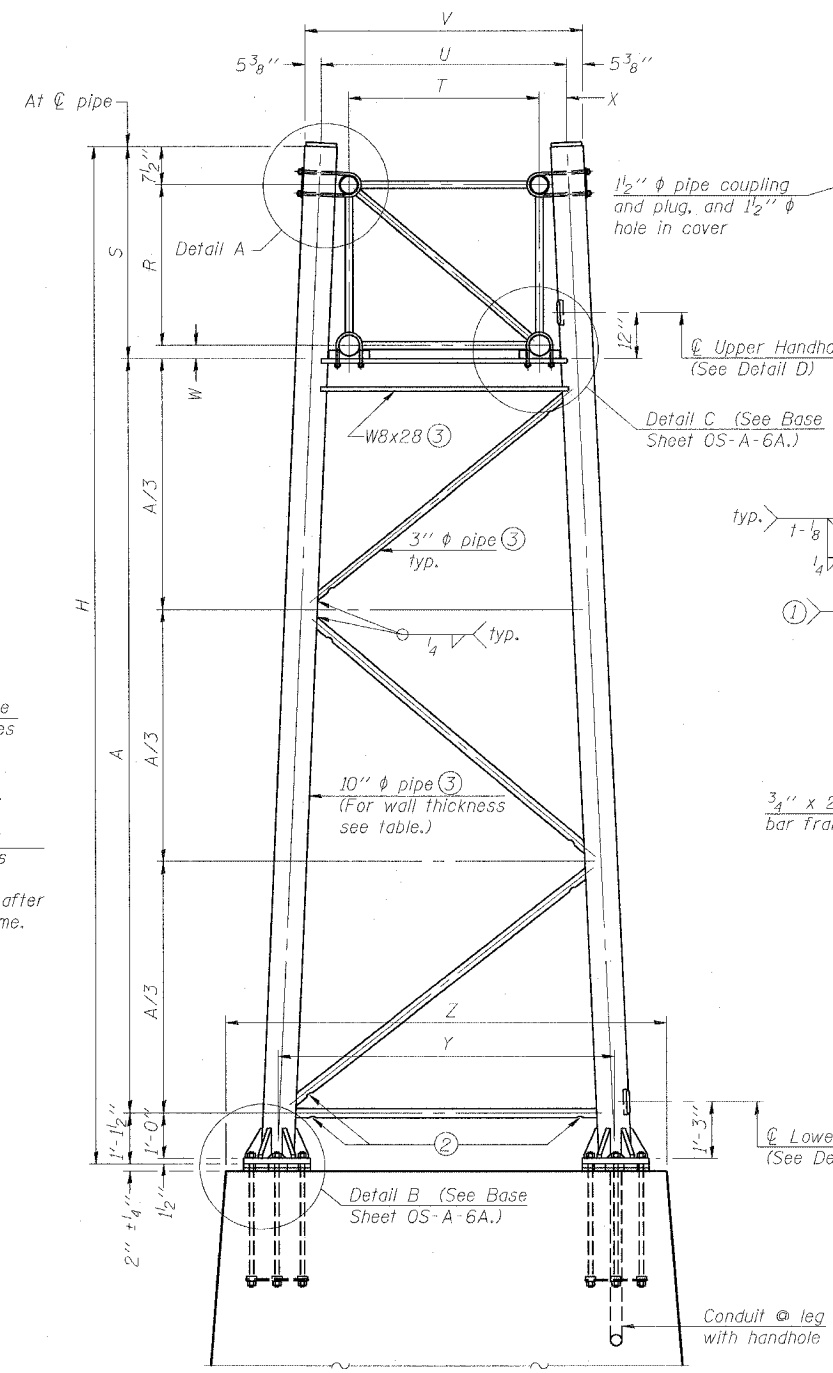


SECTION A-A

As an alternate to bolts, may use galvanized drive-fit caps installed after galvanizing frame.

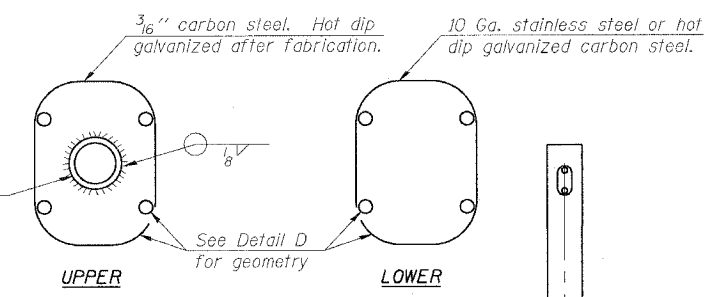


SECTION B-B

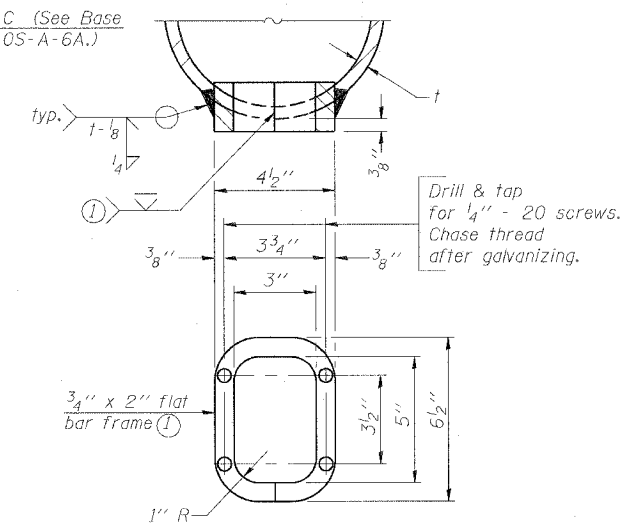


For Foundation Details, see base sheet OS-F3 (Spread Footing) or OS4-F3 (Drilled Shaft).

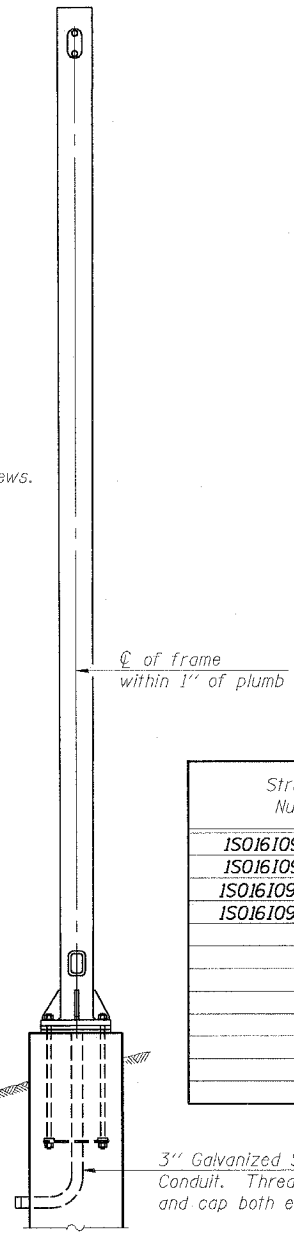
SIDE ELEVATION



HANDHOLE COVERS



DETAIL D



END ELEVATION

Support Design Loads: See Base Sheet OS-A-1 for design and loading criteria.
Load combinations checked include deadload plus:
a) 100% wind normal to sign, 20% parallel to sign
b) 60% wind normal to sign, 30% parallel to sign

- In lieu of fabricated handhole frame as shown, may cut from 2" plate (rolling direction vertical). All cut faces to be ground to ANSI Roughness of 500 μin or less.
- Galvanizing vent holes of adequate size shall be provided on underside at each end of bracing pipes. Alternately, holes may be provided in wall of pipe column. All vent holes shall be drilled and de-burred, typ.
- Steel pipe, plate, carbon steel handhole covers and rolled sections shall be hot dip galvanized after fabrication. Painting is not permitted. See Base Sheet OS-A-1.
- See General Notes for fasteners.
- Dimensions shown are based on selection criteria in the Sign Structures Manual. Nonstandard applications must have dimensions verified or amended as appropriate.

Structure Number	Station	Support		Truss Type	Pipe Wall Thickness	H	A
		Left	Right				
ISO161094L056.9	4518+40.00	X		II-A	0.365 (Std)	23.15'	15.76'
ISO161094L056.9	4518+40.00		X	II-A	0.365 (Std)	22.12'	14.73'
ISO161094L056.60	4535+80.00	X		II-A	0.365 (Std)	27'-3 1/4"	19'-10 1/2"
ISO161094L056.60	4535+80.00		X	II-A	0.365 (Std)	25'-9 3/4"	18'-5"

10" φ PIPE TRUSS SUPPORT FRAME

Truss Type	Dimensions									
	R	S	T	U	V	W	X	Y	Z	
I-A	4'-6"	5'-5 1/2"	4'-0"	5'-6"	6'-4 3/4"	4"	9"	8'-3"	11'-3"	
II-A (5)	5'-3"	6'-3 1/4"	4'-6"	6'-1"	6'-11 3/4"	4 3/4"	9 1/2"	8'-3"	11'-3"	

DESIGNED	JSS
CHECKED	RDP
DRAWN	JSS
CHECKED	RDP

EXAMINED	20
PASSED	ENGINEER OF STRUCTURAL SERVICES
	ENGINEER OF BRIDGES AND STRUCTURES

NUMBER	REVISION	DATE
1	MSA/AS	8/7/06

OS-A-6

1-7-05

OVERHEAD SIGN STRUCTURES
SUPPORT FRAME for ALUMINUM TRUSS

F.A.I. 90/94 (DAN RYAN EXPRESSWAY)
GARFIELD BLVD TO 31ST STREET (NB LOCAL LANES)
PROPOSED IMPROVEMENT
GARFIELD BLVD TO 31ST STREET

SGN-18

F:\P\4665\4665-18 & 19\Struct\18\Signing\SS180826A.dgn 06/08/2006 02:46:50 PM