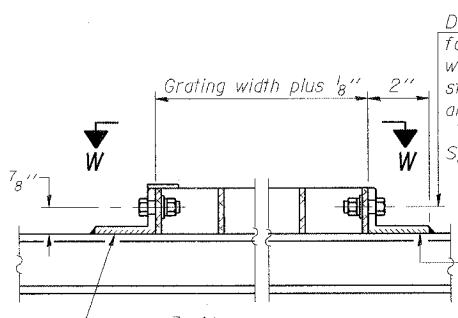
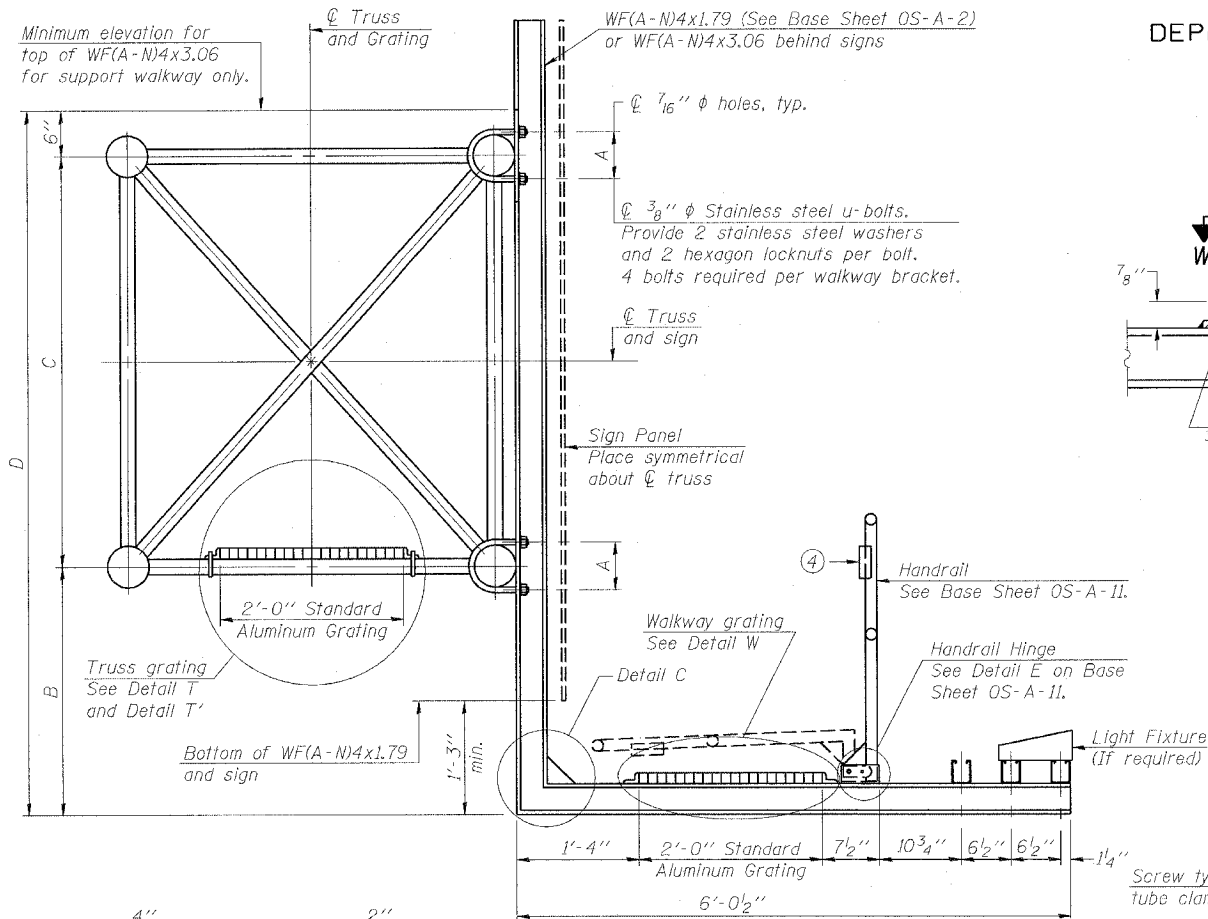
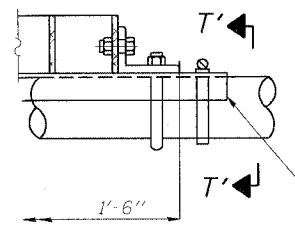


STATE OF ILLINOIS
DEPARTMENT OF TRANSPORTATION

ROUTE NO.	SECTION	QUANTITY	TOTAL SHEETS	SHEET NO.
F.A.I. RTE. 90/94		COOK	565	265
FED. ROAD DIST. NO. 1	ILLINOIS	FED. AID PROJECT-		
(1816, ETC. 2324.6-1P) R-10				62301

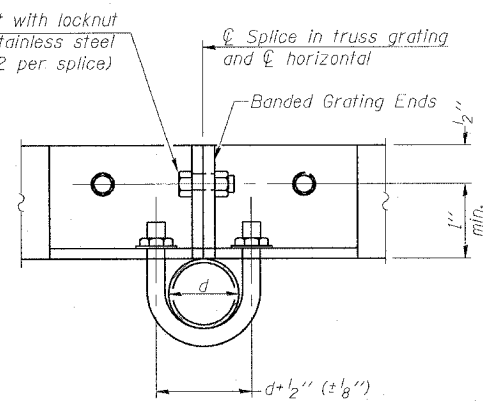


DETAIL W
(Walkway grating)

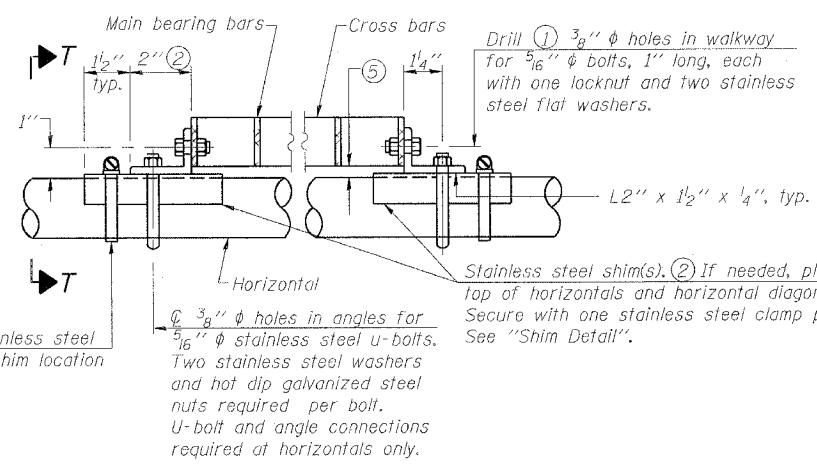


DETAIL T'

(Truss grating splice)
Details not shown same as Detail T.
Alternate materials may be used subject to the Engineer's review and approval.

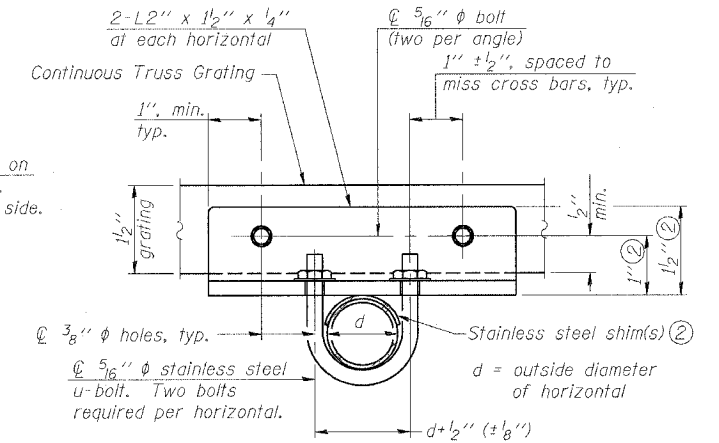


SECTION T'-T'



DETAIL T

(Continuous Truss grating)



SECTION T-T

SPECIFICATIONS FOR STANDARD ALUMINUM GRATING

Main Bearing Bars shall be 3/16" x 1 1/2" on 1 3/8" centers and conform to ASTM B221 Alloy 6061-T6.
Cross bars shall be 3/16" x 1 1/2" on 4" centers and conform to ASTM B221 Alloy 6063-T5 or 6061-T6.

OR

Aluminum Grating with modified "I" sections for main bearing bars shall meet the following requirements:
Main bars shall conform to ASTM B221 Alloy 6061-T6 and have a minimum section modulus equal to 0.0705 in.³ per bar, a depth of 1 1/2", spaced on 1 3/8" centers.
Cross bars shall conform to ASTM B221 Alloy 6063-T5 or T-42 and spaced on 4" centers.

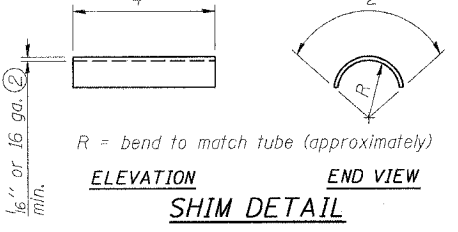
Structure Number	Station	A	B	C	D
ISO161094L057.3	4498+00	5 1/2"	3'-0"	4'-6"	8'-0"
ISO161094L057.1	4506+75	5 1/2"	5'-3"	4'-6"	10'-3"
ISO161094L056.9	4518+40	6 1/2"	3'-0"	4'-6"	8'-0"
ISO161094L056.60	4535+80	6 1/2"	4'-10 1/16"	5'-3"	10'-7 1/16"
ISO161094L056.43	4545+35	5 1/2"	3'-3"	4'-6"	8'-3"
ISO161094L055.94	4571+00	5 1/2"	3'-9"	4'-6"	8'-9"

- Drilling holes in grating may be done in shop or field, based on Contractor's preference and subject to accurate alignment.
- Stainless steel shims shall be placed as shown in Detail T if needed to compensate for alignment variations between horizontal and diagonal pipes beyond adjustment provided by angles. Thicker shims may be used subject to shims performing properly.
- If Handrail Joint present, weld angle to WF(A-N)4 and 1/4" extension bars. (See Base Sheet OS-A-II.)
- 1/8" x 1/2" x 2" welded to handrail posts to protect locations that contact grating.
- Tube to grating gap may vary from 0 to 1/2", max. to align walkway, allow for camber, etc.

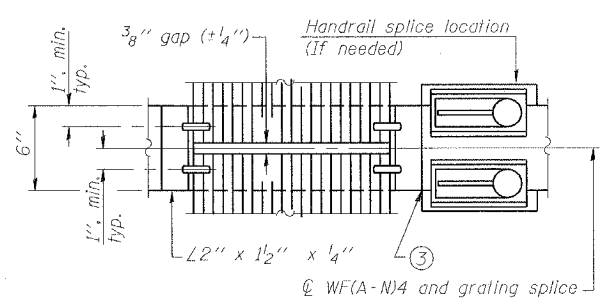
SGN-23

**OVERHEAD SIGN STRUCTURES
ALUMINUM WALKWAY DETAILS**

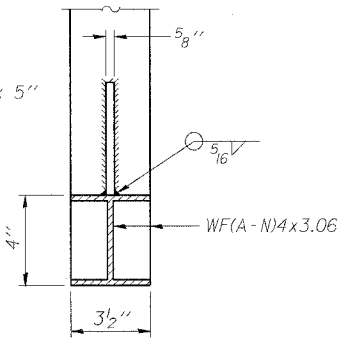
F.A.I. 90/94 (DAN RYAN EXPRESSWAY)
GARFIELD BLVD TO 31ST STREET (NB LOCAL LANES)
PROPOSED IMPROVEMENT
GARFIELD BLVD TO 31ST STREET



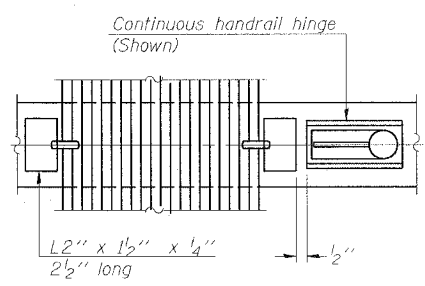
SECTION B-B



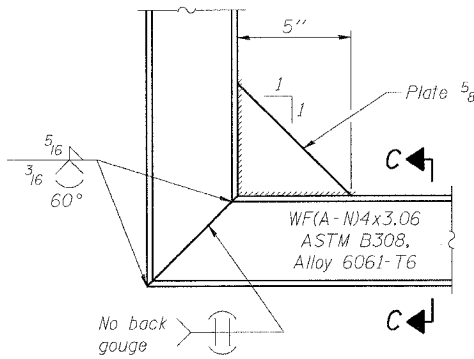
(AT WALKWAY GRATING SPLICE)



SECTION C-C



SECTION W-W



(See Detail P, Base Sheet OS-A-II.)

DESIGNED	JSS
CHECKED	RDP
DRAWN	JSS
CHECKED	RDP

EXAMINED	20
PASSED	

ENGINEER OF STRUCTURAL SERVICES
ENGINEER OF BRIDGES AND STRUCTURES

NUMBER	REVISION	DATE
2	MSA/AS	8/7/06

08/08/2006 02:49:27 PM P:\A\466\CH\NB-Cntfr IB & 19\SIGN\CTR IB\SIGNING\SS\IB0232A.DGN