

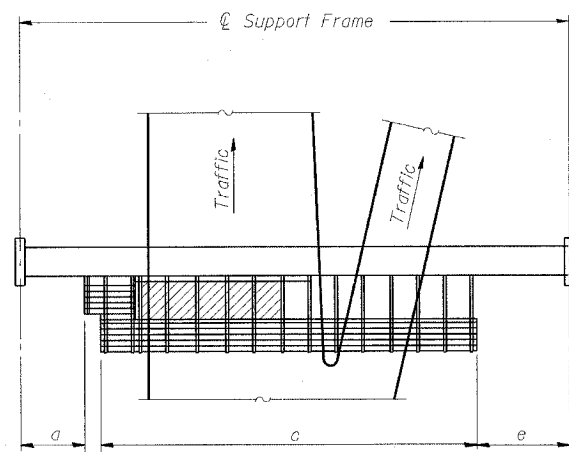
STATE OF ILLINOIS
DEPARTMENT OF TRANSPORTATION

Top of WF6x5.40 walkway support and sign bracket

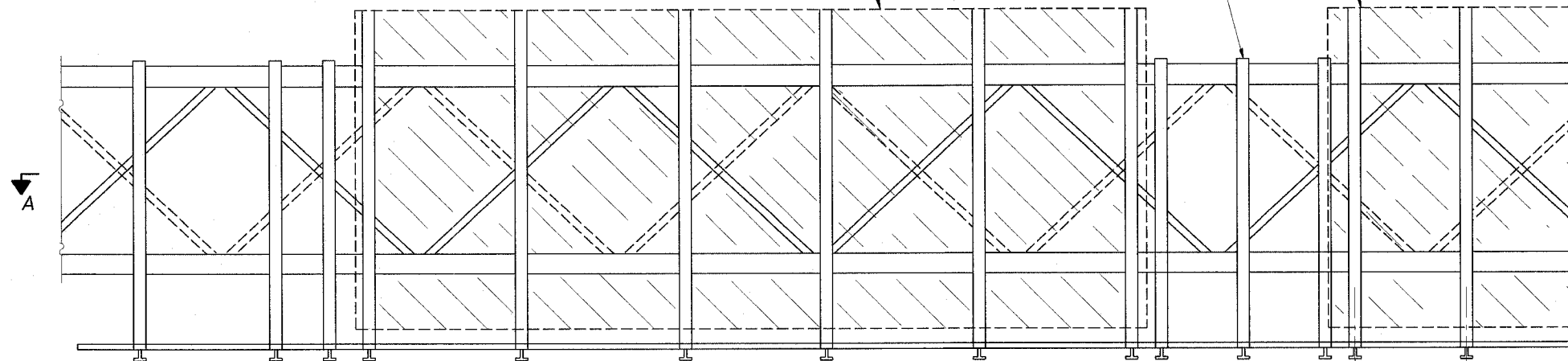
Top of WF6x5.40 for walkway support only

Sign panel. For location, see sign detail sheet(s).

ROUTE NO.	SECTION	COUNTY	TOTAL SHEETS	SHEET NO.
90/94	*	COOK	565	267
FED. ROAD DIST. NO. 1		ILLINOIS	FED. AID PROJECT	
* 62301 (2021-922 P12 ECT 2324.6-1P1 R-10				



PLAN
WALKWAY AND HANDRAIL SKETCH
(Road plan beneath truss varies)



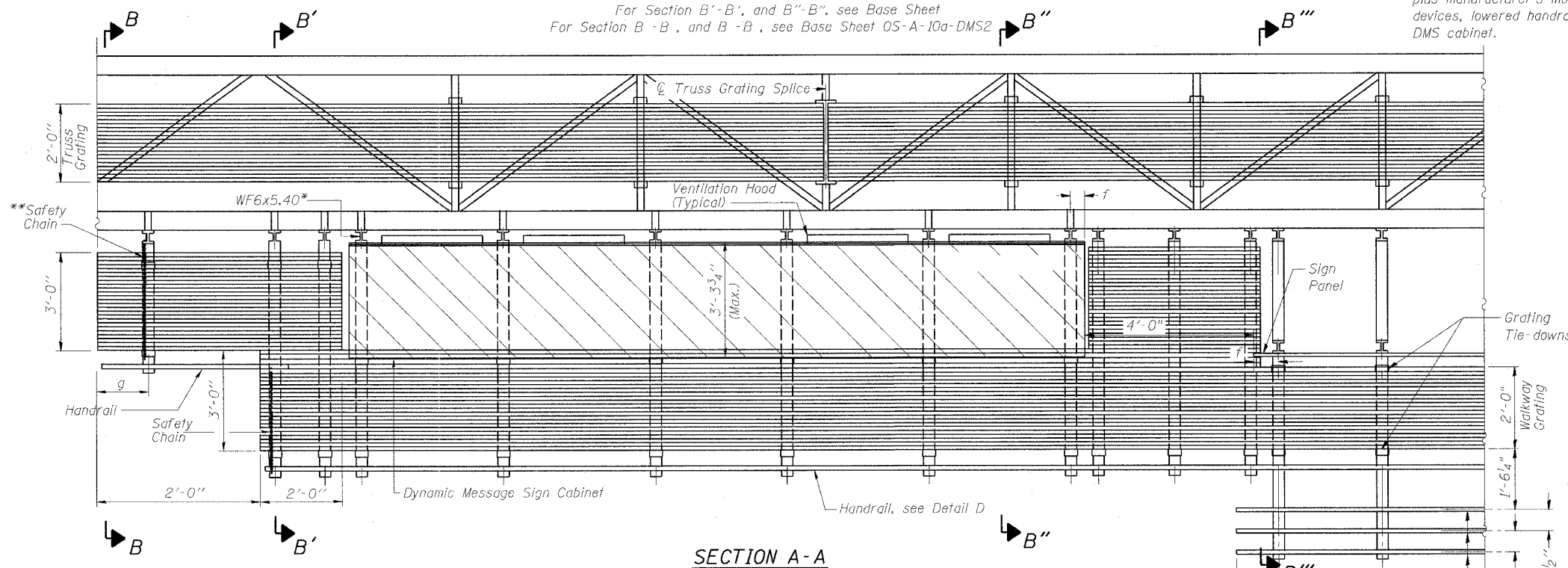
TYPICAL FRONT ELEVATION
With handrail omitted for clarity.
For Section B-B, see Base Sheet OS-A-10-DMS2
For Section B'-B', and B''-B'', see Base Sheet OS-A-10-DMS2
For Section B-B', and B-B'', see Base Sheet OS-A-10a-DMS2

Bracket and grating dimensions are nominal and will vary based on actual DMS cabinet dimensions plus manufacturer's mounting devices, lowered handrail and DMS cabinet.

Walkway and Truss Grating width dimensions are nominal and may vary $\pm 1/2$ " based on available standard widths.

BRACKET TABLE

WF6x5.40 ASTM B308, Alloy 6061-T6	
Sign Width	Number Brackets Required
26'-1"	6
12'-0"	6



SECTION A-A

Notes: *Space WF6x5.40 brackets for efficiency and within limits shown:

- f = 12" maximum, 4" minimum (End of sign to ϕ of nearest bracket)
- g = 12" maximum, 4" minimum (End of walkway grating to ϕ of nearest support bracket)
- h = 6'-0" maximum (ϕ to ϕ or walkway support brackets, WF6x5.40)

**If walkway bracket at safety chain location is behind sign, add angle to bracket, see Alternate Safety Chain Attachment on Base Sheet OS-A-11-DMS2

For Details T and W, Section B-B and Grating Splice Details, see Base Sheet OS-A-10-DMS2.
For Details D, F, G and P and Handrail Splice Details, see Base Sheet OS-A-11-DMS2.

Handrail and walkway shall span a minimum of three brackets between splices and/or gap joints. Place all sign and walkway brackets as close to panel points as practical. Grating and handrail splices placed as needed.

Truss grating to facilitate inspection shall run full length (center to center of support frames) ± 12 " on overhead trusses. Cost of truss grating is included in "Overhead Sign Structure"

Light fixture supports. Length as required for lighting fixtures. (If required)

SGN-25

DESIGNED	AC
CHECKED	AS
DRAWN	RV
CHECKED	MSA

EXAMINED	20
PASSED	ENGINEER OF STRUCTURAL SERVICES
	ENGINEER OF BRIDGES AND STRUCTURES

NUMBER	REVISION	DATE
2	MSA/AS	8/7/06

Structure Number	Station	a	b	c	d	e	Walkway Grating and Handrail Lengths
IS0161094L055.41	4599+00	3'-10"	2'-0"	45'-6"	0	22'-1"	47'-6"

MODIFIED BY CTE ENGINEERS, INC FROM OS-A-9-DMS2 7/1/2001

**OVERHEAD SIGN STRUCTURES
ALTERNATE ALUMINUM WALKWAY DETAILS
FOR DMS**

ILLINOIS DEPARTMENT OF TRANSPORTATION
F.A.I. 90/94 (DAN RYAN EXPRESSWAY)
63RD STREET TO GARFIELD BLVD (NB LOCAL LANES)

**OVERHEAD SIGN STRUCTURES
(SPAN)**

P:\P\40468\CH\IN\B-C\18 & 19\3\CH\18-Signing\SS1802262.dwg 08/07/2006 01:16:35 PM