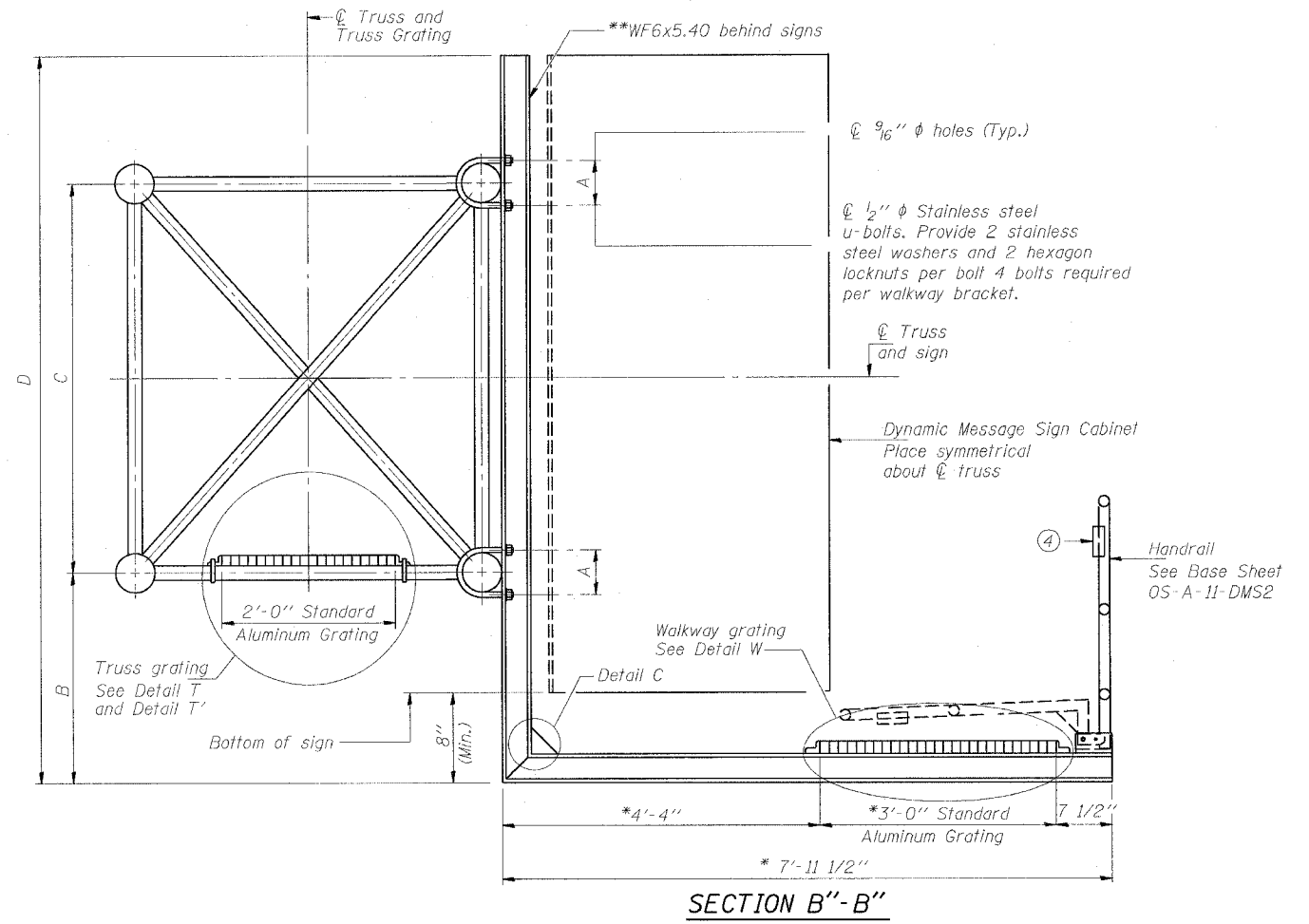
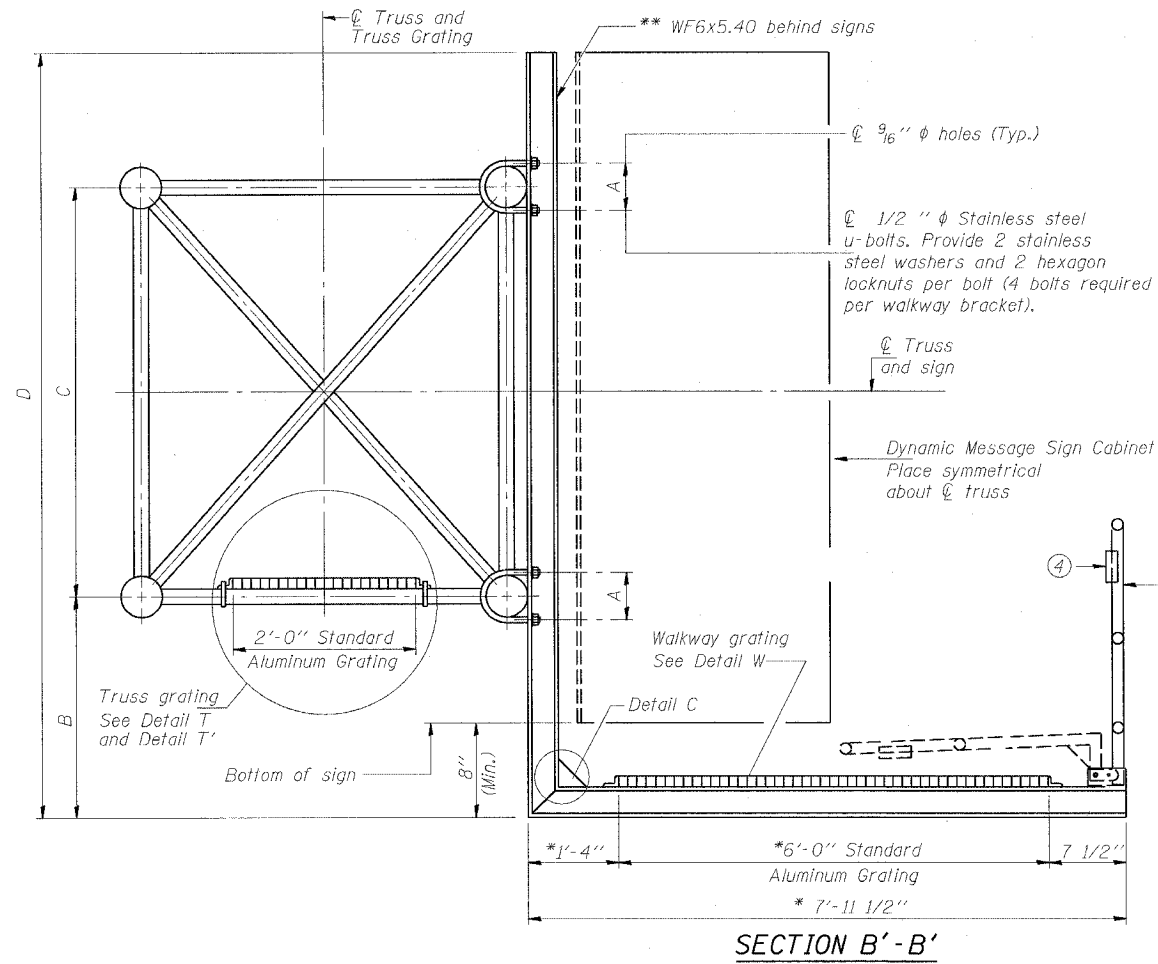


STATE OF ILLINOIS
DEPARTMENT OF TRANSPORTATION

ROUTE NO.	COUNTY	TOTAL SHEETS	SHEET NO.
94/90	COOK	565	269
FED. ROAD DIST. NO. 1	ILLINOIS	FED. AID PROJECT-	

* 62301 (2021-922 PT2 ETC 2324.6-IP) R-10



* Bracket and grating dimensions are nominal and will vary based on actual DMS cabinet dimensions plus manufacturer's mounting devices, and providing clearance between the lowered handrail and DMS cabinet.

** Cabinet manufacturer must design and supply hardware for connection of cabinet to WF6's. Bolts must be stainless steel or hot dip galvanized high strength per IDOT specifications.

Note:

For dimensions "A" to "D" and remaining details, see sheet OS-A-10-DMS2

DESIGNED	AC
CHECKED	AS
DRAWN	RV
CHECKED	MSA

EXAMINED	19
PASSED	ENGINEER OF STRUCTURAL SERVICES
	ENGINEER OF BRIDGES AND STRUCTURES

NUMBER	REVISION	DATE
1	MSA/AS	8/7/06

OS-A-10a-DMS2 1/7/2005

SGN-27

**OVERHEAD SIGN STRUCTURES
ALTERNATE ALUMINUM WALKWAY DETAILS**

ILLINOIS DEPARTMENT OF TRANSPORTATION
F.A.I. 94/90 (DAN RYAN EXPRESSWAY)
GARFIELD BLVD TO 31ST STREET (NB LOCAL LANES)

OVERHEAD SIGN STRUCTURES
(SPAN)