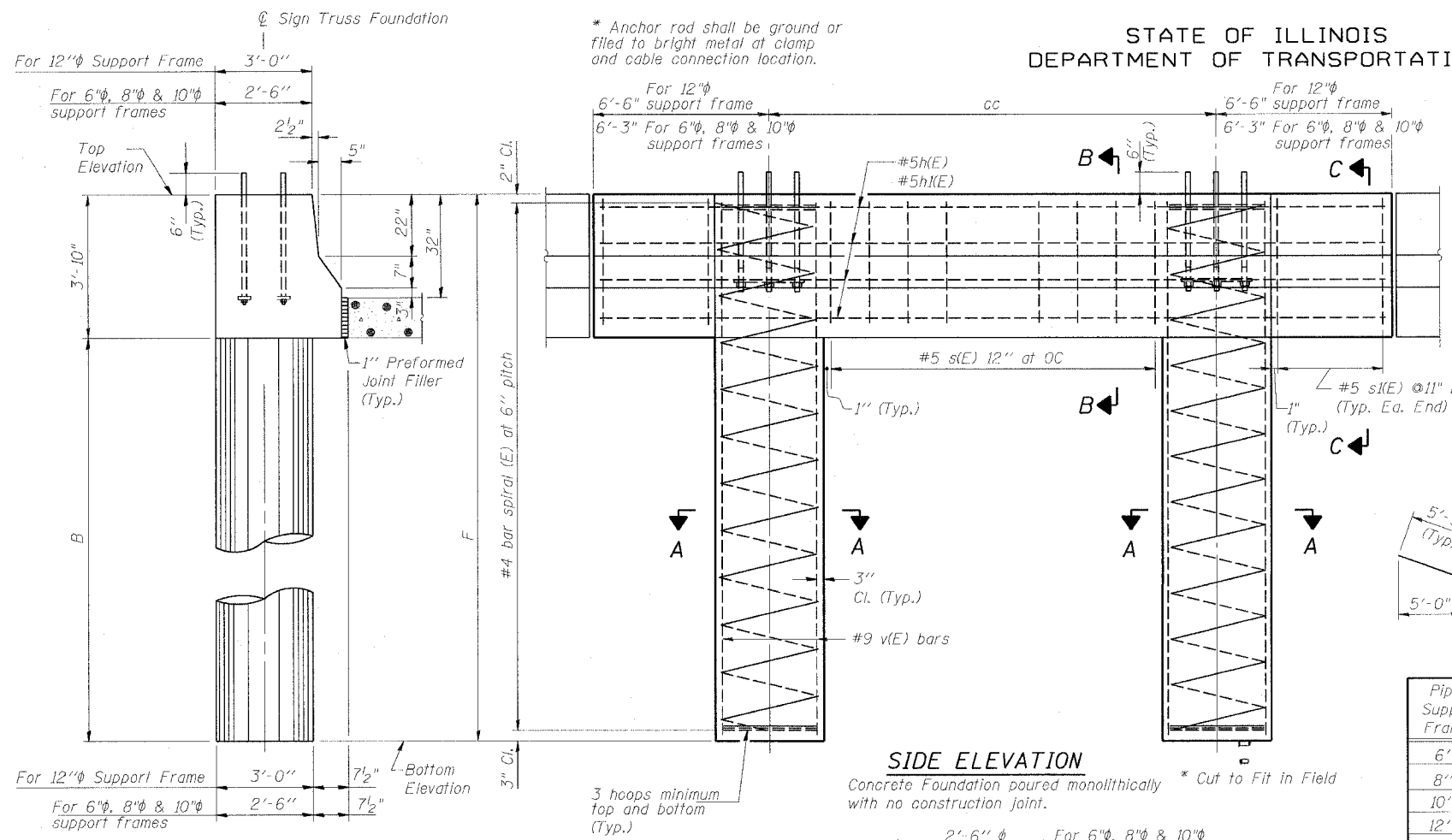
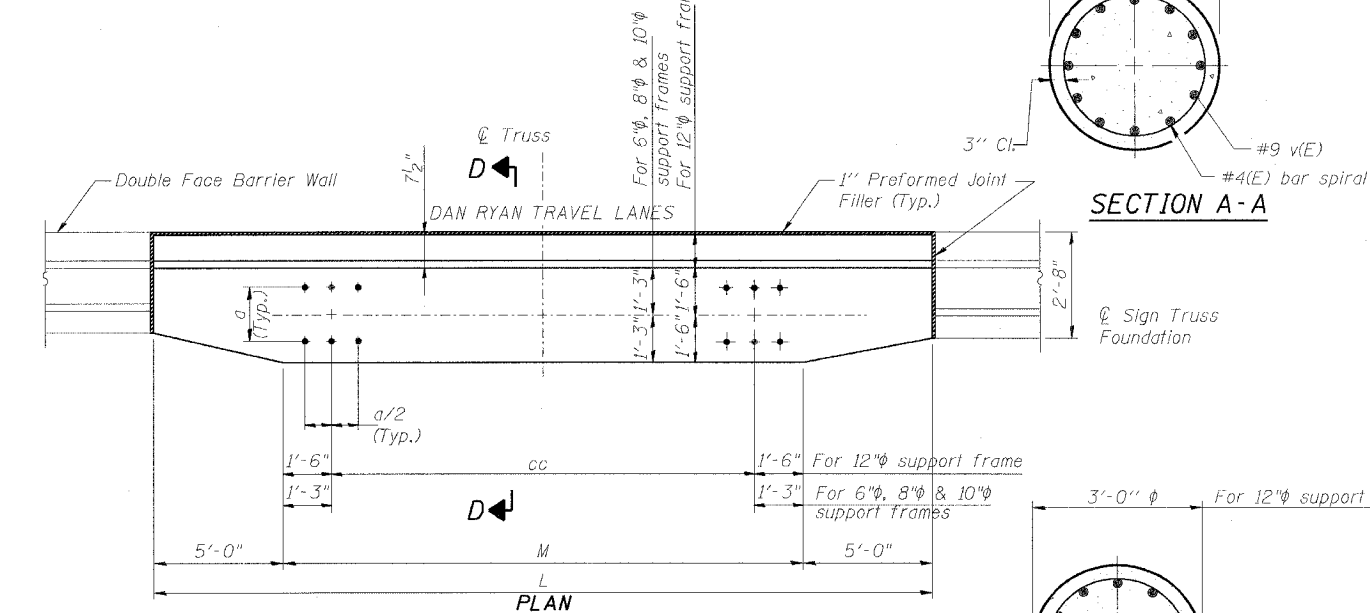


STATE OF ILLINOIS
DEPARTMENT OF TRANSPORTATION

ROUTE NO.	SECTION	COUNTY	TOTAL SHEETS	SHEET NO.	SHEET NO.
90/94	*	COOK	565	276	- SHEETS
* 62301 (2021-922 P12 ETC 2324.6-1P) R-10					



END VIEW D-D



DESIGNED	AC
CHECKED	AS
DRAWN	RV
CHECKED	PKC

EXAMINED	20
PASSED	ENGINEER OF STRUCTURAL SERVICES
	ENGINEER OF BRIDGES AND STRUCTURES

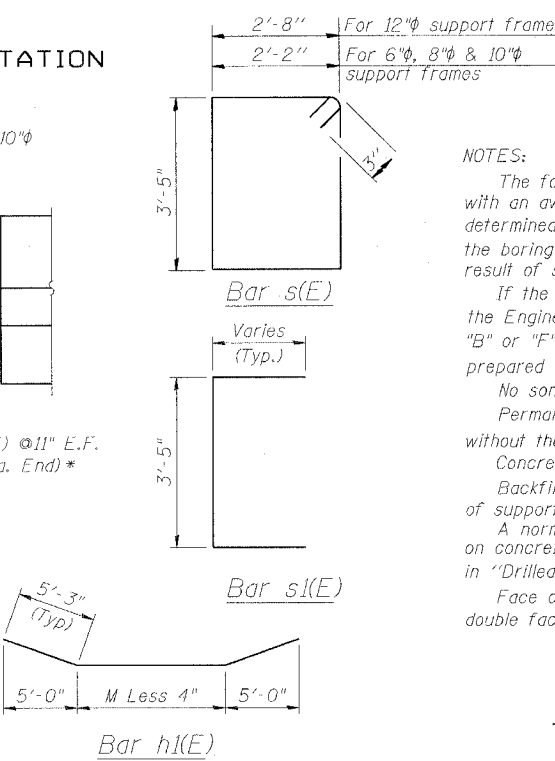
NUMBER	REVISION	DATE
1	MSA/AS	8/7/06

SIDE ELEVATION

Concrete Foundation poured monolithically with no construction joint. * Cut to Fit in Field

SECTION A-A

SECTION A-A



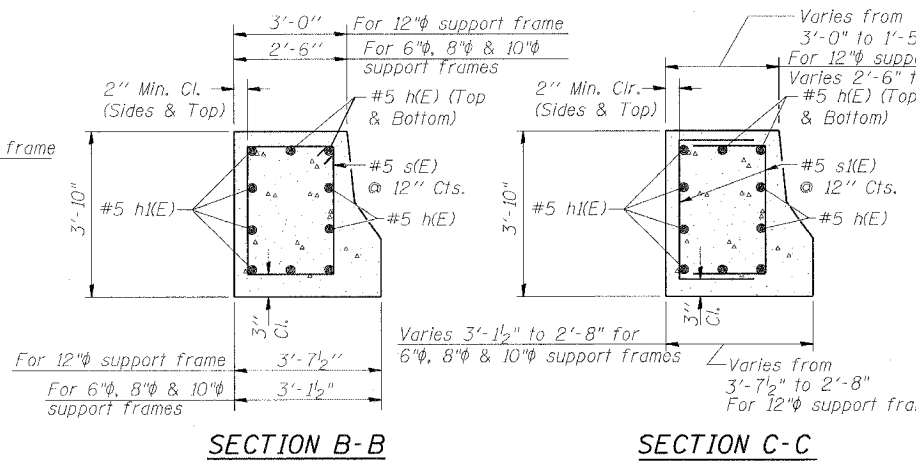
Pipe Support Frames	cc	M	a	a/2
6"φ	7'-0"	9'-6"	0'-11"	5 1/2"
8"φ	7'-6"	10'-0"	1'-1 1/2"	6 3/4"
10"φ	8'-3"	10'-9"	1'-3"	7 1/2"
12"φ	9'-0"	12'-0"	1'-6"	9"

BAR LIST - EACH FOUNDATION

Bar	Number	Size	Length	Shape
h(E)	6	#5	L less 0'-4"	—
h(E)	4	#5	M less 4" + 10'-6"	—
s(E)	Varies	#5	13'-8" or 12'-8"	□
s(E)	24	#5	Varies	⊥
v(E)	24	#9	F less 0'-5"	—
v(E)	16	#19	F less 0'-5"	—
#4(E) bar spiral				

LEFT FOUNDATION FROM CONTRACT 62300 TO BE USED

Pipe Support Frame	Structure Number	Station	Left Foundation				Right Foundation				Class SI Concrete (Cu. Yds.)
			Elevation Top	Elevation Bottom	B	F	Elevation Top	Elevation Bottom	B	F	
10"	IS0161094L056.60	4535+80	-	-	-	-	9.31	-12.02	17.5'	21.33'	15.0



SECTION B-B

SECTION C-C

OVERHEAD SIGN STRUCTURES
MEDIAN SUPPORT FOUNDATION DETAILS

ILLINOIS DEPARTMENT OF TRANSPORTATION
F.A.I. 94/90 (DAN RYAN EXPRESSWAY)
GARFIELD BLVD TO 31ST STREET (NB LOCAL LANES)
OVERHEAD SIGN STRUCTURES
(SPAN)

SGN-34

MODIFIED FROM OS4-MED

08/08/2006 01:45:09 PM P:\P\90460\civil\IB-CR18 & 19\SGN\cr18\IB\Signing\SS180342.dgn