

F.A.I.	SECTION	COUNTY	TOTAL SHEETS	SHEET NO.
94/90	*	COOK	565	380
STA.		TO STA.		
62301		*12021-922 PT2 ETC 2324.6-1P) R-10		

PILE LAYOUT

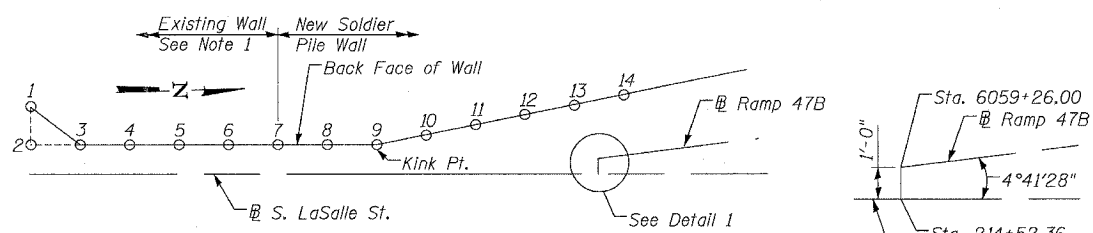
Pile	Offset (Ft.)	Top of Wall El.	Top of Pile Elevation	Bott. of Facing Elevation	Section	Pile Tip Elevation	Pile Length (Ft.)
P-1	88.47	16.26	15.26	6.32	W24x68	-12.35	27.61
P-2	88.80	16.16	15.16	6.52	W24x68	-12.35	27.51
P-3	89.13	16.07	15.07	6.71	W24x68	-12.35	27.41
P-4	89.46	15.97	14.97	6.91	W24x68	-12.35	27.31
P-5	89.74	15.90	14.90	7.48	W24x68	-11.17	26.07
P-6	89.95	15.88	14.88	7.65	W24x68	-11.17	26.05
P-7	90.16	15.86	14.86	7.83	W24x68	-11.17	26.03
P-8	90.37	15.84	14.84	8.01	W24x68	-11.17	26.01
P-9	90.30	15.84	14.84	8.48	W24x76	-11.10	25.94
P-10	89.77	15.85	14.85	8.60	W24x76	-11.10	25.95
P-11	89.24	15.87	14.87	8.72	W24x76	-11.10	25.97
P-12	88.71	15.88	14.88	8.85	W24x76	-11.10	25.99
P-13	88.22	15.89	14.89	9.06	W24x68	-10.16	25.04
P-14	87.56	15.89	14.89	9.06	W24x68	-10.16	25.04
P-15	86.90	15.88	14.88	9.05	W24x68	-10.16	25.04
P-16	86.23	15.88	14.88	9.04	W24x68	-10.16	25.04
P-17	85.73	15.89	14.89	9.02	W24x68	-10.21	25.11
P-18	85.06	15.94	14.94	9.01	W24x68	-10.21	25.15
P-19	84.39	15.98	14.98	9.00	W24x68	-10.21	25.19
P-20	83.72	16.02	15.02	8.99	W24x68	-10.21	25.23
P-21	83.21	16.05	15.05	8.97	W24x68	-10.27	25.32
P-22	82.54	16.09	15.09	8.96	W24x68	-10.27	25.36
P-23	81.87	16.13	15.13	8.95	W24x68	-10.27	25.40
P-24	81.20	16.17	15.17	8.94	W24x68	-10.27	25.44
P-25	80.69	16.20	15.20	8.91	W24x68	-10.23	25.43
P-26	80.02	16.25	15.25	8.90	W24x68	-10.23	25.48
P-27	79.35	16.30	15.30	8.89	W24x68	-10.23	25.53
P-28	78.68	16.35	15.35	8.88	W24x68	-10.23	25.58
P-29	-20.51	16.38	15.38	8.85	W24x68	-10.34	25.73
P-30	-20.51	16.43	15.43	8.84	W24x68	-10.34	25.77
P-31	-20.51	16.48	15.48	8.83	W24x68	-10.34	25.82
P-32	-20.51	16.53	15.53	8.82	W24x68	-10.34	25.87
P-33	-20.51	16.57	15.57	8.80	W24x68	-10.40	25.96
P-34	-20.51	16.61	15.61	8.79	W24x68	-10.40	26.01
P-35	-20.51	16.66	15.66	8.78	W24x68	-10.40	26.06
P-36	-20.51	16.71	15.71	8.77	W24x68	-10.40	26.11
P-37	-20.51	16.75	15.75	8.74	W24x68	-12.59	28.33
P-38	-20.51	16.79	15.79	8.73	W24x68	-12.59	28.37
P-39	-20.51	16.83	15.83	8.72	W24x68	-12.59	28.41
P-40	-20.36	16.87	15.87	8.70	W27x114	-16.35	32.22
P-41	-20.36	16.95	15.95	8.69	W27x114	-16.35	32.30
P-42	-20.51	16.99	15.99	8.67	W24x68	-12.66	28.65
P-43	-20.51	17.03	16.03	8.66	W24x68	-12.66	28.69
P-44	-20.51	17.07	16.07	8.65	W24x68	-12.66	28.73
P-45	-20.51	17.08	16.08	8.63	W24x68	-12.71	28.79
P-46	-20.51	17.06	16.06	8.62	W24x68	-12.71	28.77
P-47	-20.51	17.04	16.04	8.61	W24x68	-12.71	28.75
P-48	-20.51	17.02	16.02	8.60	W24x68	-12.71	28.73
P-49	-20.50	16.97	15.97	8.57	W24x76	-13.48	29.45
P-50	-20.50	16.91	15.91	8.56	W24x76	-13.48	29.39
P-51	-20.50	16.86	15.86	8.55	W24x76	-13.48	29.33
P-52	-20.50	16.80	15.80	8.54	W24x76	-13.48	29.28
P-53	-20.50	16.74	15.74	8.51	W24x76	-13.53	29.27
P-54	-20.50	16.63	15.63	8.50	W24x76	-13.53	29.16
P-55	-20.50	16.52	15.52	8.49	W24x76	-13.53	29.05
P-56	-20.50	16.41	15.41	8.48	W24x76	-13.53	28.94
P-57	-20.51	16.30	15.30	8.46	W24x68	-11.38	26.68
P-58	-20.51	16.11	15.11	8.45	W24x68	-11.38	26.49
P-59	-20.51	15.93	14.93	8.44	W24x68	-11.38	26.31
P-60	-20.51	15.74	14.74	8.43	W24x68	-11.38	26.12

PILE LAYOUT

Pile	Offset (Ft.)	Top of Wall El.	Top of Pile Elevation	Bott. of Facing Elevation	Section	Pile Tip Elevation	Pile Length (Ft.)
P-61	-20.51	15.59	14.59	8.41	W24x68	-11.40	25.99
P-62	-20.51	15.36	14.36	8.40	W24x68	-11.40	25.76
P-63	-20.51	15.13	14.13	8.40	W24x68	-11.40	25.53
P-64	-20.51	14.90	13.90	8.40	W24x68	-11.40	25.30
P-65	-20.51	14.75	13.75	8.41	W24x68	-11.40	25.15
P-66	-20.51	14.55	13.55	8.42	W24x68	-11.40	24.95
P-67	-20.51	14.35	13.35	8.43	W24x68	-11.40	24.74
P-68	-20.51	14.14	13.14	8.45	W24x68	-11.40	24.54
P-69	-20.51	14.00	13.00	8.62	W24x68	-10.86	23.86
P-70	-20.51	13.82	12.82	8.74	W24x68	-10.86	23.68
P-71	-20.51	13.64	12.64	8.87	W24x68	-10.86	23.50
P-72	-20.51	13.46	12.46	9.00	W24x68	-10.86	23.32
P-73	-20.51	13.34	12.34	9.13	W24x68	-10.11	22.45
P-74	-20.51	13.18	12.18	9.06	W24x68	-10.11	22.29
P-75	-20.51	13.03	12.03	8.98	W24x68	-10.11	22.14
P-76	-20.51	12.88	11.88	8.91	W24x68	-10.11	21.99
P-77	-20.51	12.77	11.77	8.67	W24x68	-9.42	21.19
P-78	-20.51	12.65	11.65	8.59	W24x68	-9.42	21.07
P-79	-20.51	12.52	11.52	8.51	W24x68	-9.42	20.94
P-80	-20.51	12.40	11.40	8.43	W24x68	-9.42	20.82
P-81	-20.51	12.28	11.28	8.21	W24x68	-8.98	20.26
P-82	-20.51	12.14	11.14	8.15	W24x68	-8.98	20.12
P-83	-20.51	12.02	11.02	8.08	W24x68	-8.98	19.99

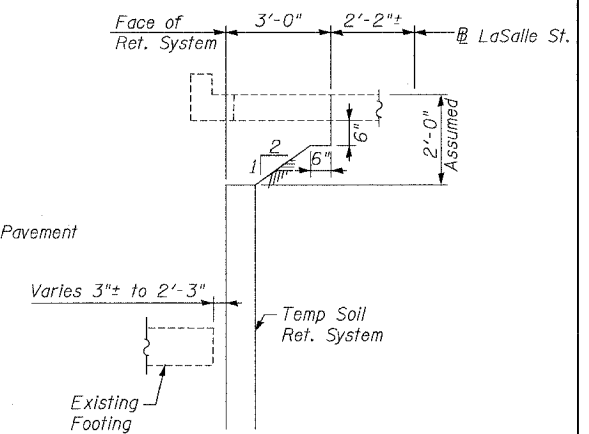
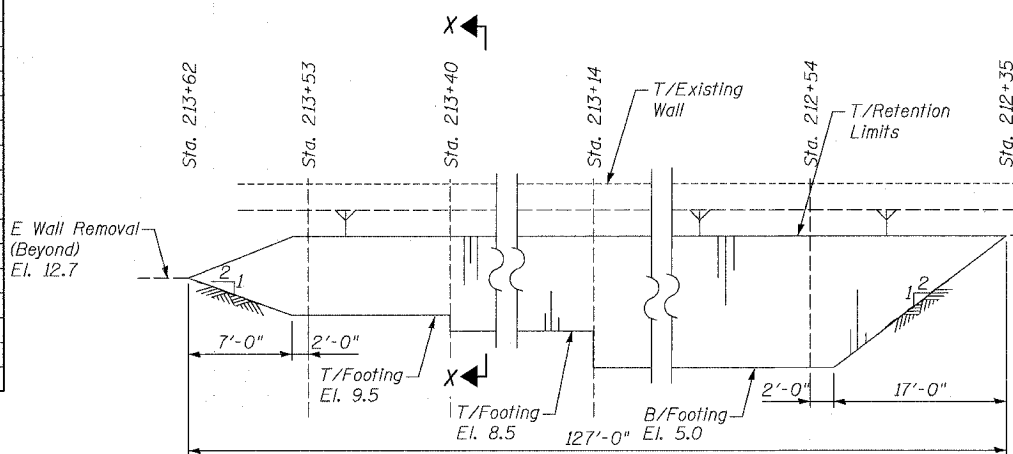
OFFSET TABLE

PT.	Station	Offset
1	211+27.35	17.12
2	211+29.26	10.51
3	211+37.31	10.00
4	211+65.75	10.18
5	211+95.23	10.33
6	212+24.71	10.48
7	212+54.39	10.58
8	212+80.55	10.63
9	213+06.61	10.68
10	213+36.55	13.14
11	213+66.46	15.59
12	213+96.35	18.05
13	214+26.25	20.50
14	214+56.15	22.95



NOTES

- All piles have drilled shaft dia = 3'-0".
- Utilize Back Face of existing wall as W.P. for top modification.



BILL OF MATERIAL

Item	Unit	Quantity
Furnishing Soldier Piles (W Sections)	Foot	2,150
Drilling and Setting Soldier Piles (In Soil)	Cu. Ft.	12,579

TEMPORARY SOIL RETENTION SYSTEM

A cantilevered sheet piling design does not appear feasible and additional members or other retention systems may be necessary. The Contractor shall submit a temporary soil retention system design including plan details and calculations for review and acceptance by the Engineer.

REVISIONS	
NAME	DATE
REVISED	6/15/06
REVISED	07/13/06
ADDENDUM 2	8/04/06

SHEET 8 OF 24

ILLINOIS DEPARTMENT OF TRANSPORTATION
F.A.I. 94/90 (DAN RYAN EXPRESSWAY)
GARFIELD BLVD TO 31ST STREET (NB LOCAL LANES)
COOK COUNTY
STA. 4529+75.90 TO STA. 4537+30.74
RETAINING WALL N-47N-R
PILE LAYOUT & TEMP. SOIL RET. SYSTEM
S.N. 016-977

SCALE: NTS
DATE: JUNE 9, 2006
DRAWN BY: MTR
CHECKED BY: BLU

BOWMAN, BARRETT & ASSOCIATES INC.
CONSULTING ENGINEERS
Chicago, Illinois
312.228.0100
www.bbainc.com