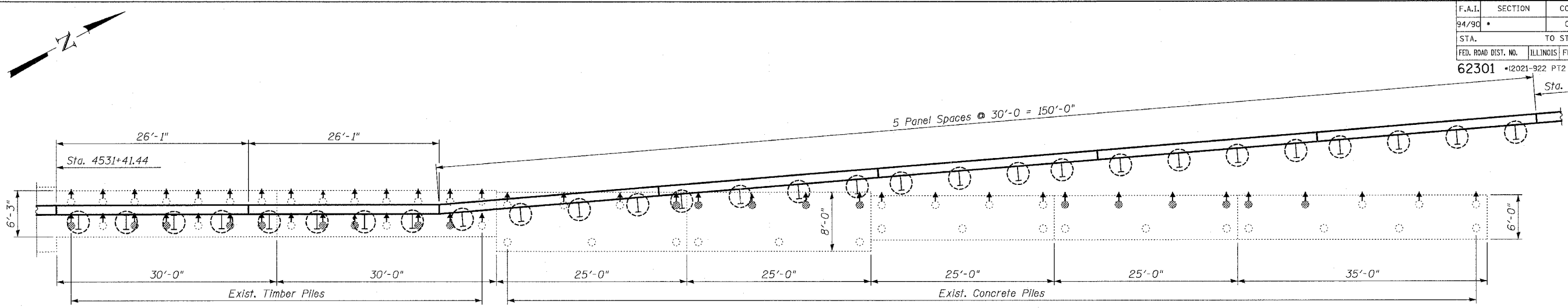
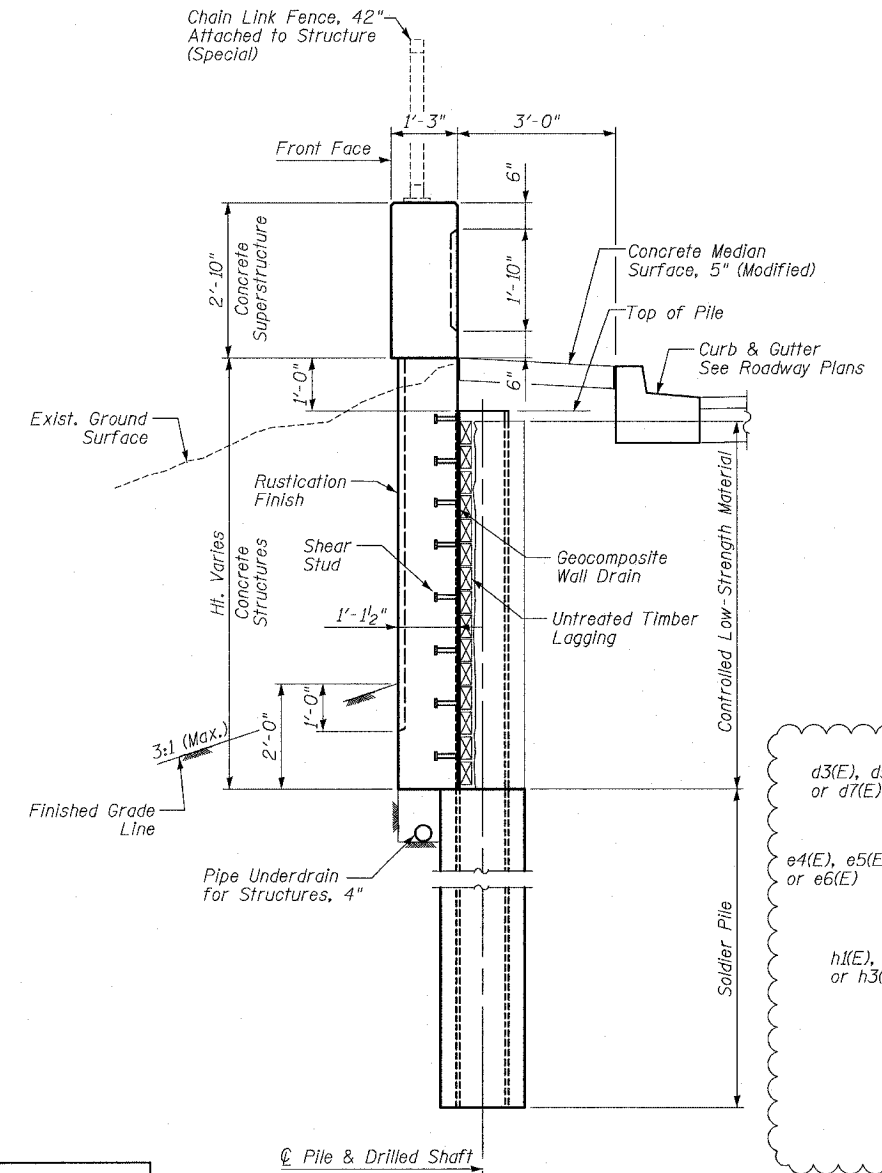


F.A.I.	SECTION	COUNTY	TOTAL SHEETS	SHEET NO.
94/90		COOK	565	385
STA.	TO STA.			
FED. ROAD DIST. NO.	ILLINOIS FED. AID PROJECT			
62301	*12021-922 PT2 ETC 2324.6-1P) R-10			
	Sta. 4533+20.93			

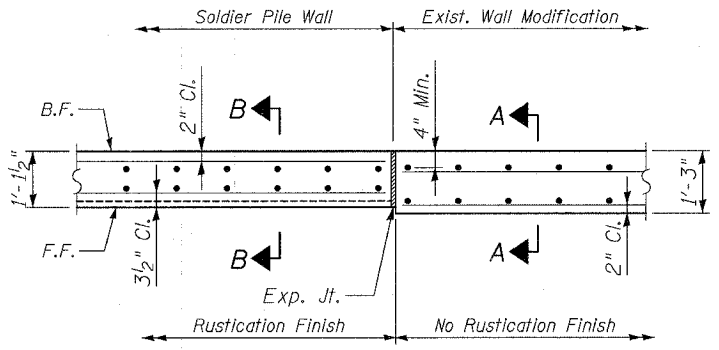


PILE EXTRACTION LAYOUT

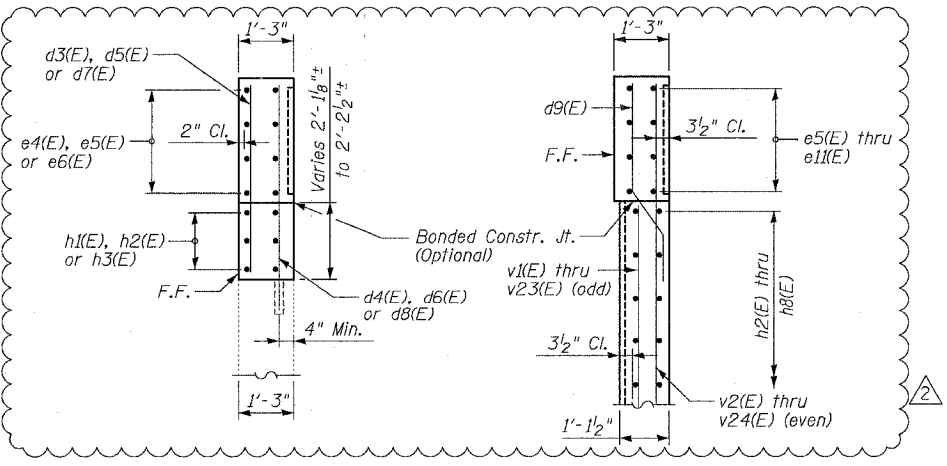
- LEGEND:**
- ⊗ - Existing Pile to be Extracted
 - - Existing Pile to Remain
 - ↑ - Indicates 3" in 12" Batter Pile
 - - Proposed Soldier Pile Encasement



TYP. SECTION THRU PROPOSED WALL
See Sheet 12 for Modifications to this Section

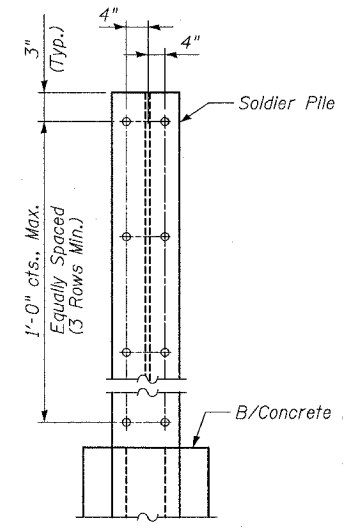


PLAN DETAIL

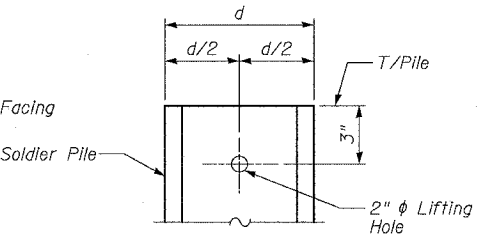


SECTION A-A

SECTION B-B



SHEAR STUD CONNECTOR DETAIL



LIFTING HOLE DETAIL

REVISIONS	
NAME	DATE
REVISOR	07/13/06
ADDENDUM 2	8/04/06

SHEET 13 OF 24

ILLINOIS DEPARTMENT OF TRANSPORTATION
F.A.I. 94/90 (DAN RYAN EXPRESSWAY)
GARFIELD BLVD TO 31ST STREET (NB LOCAL LANES)
COOK COUNTY
STA. 4529+75.90 TO STA. 4537+30.74
RETAINING WALL N-47N-R
TYPICAL SECTIONS & DETAILS
S.N. 016-W977

SCALE: NTS
DATE: JUNE 9, 2006

DRAWN BY: MTR
CHECKED BY: BLU

BOWMAN, BARRETT & ASSOCIATES INC.
CONSULTING ENGINEERS
Chicago, Illinois
312.228.0100
www.bbainc.com