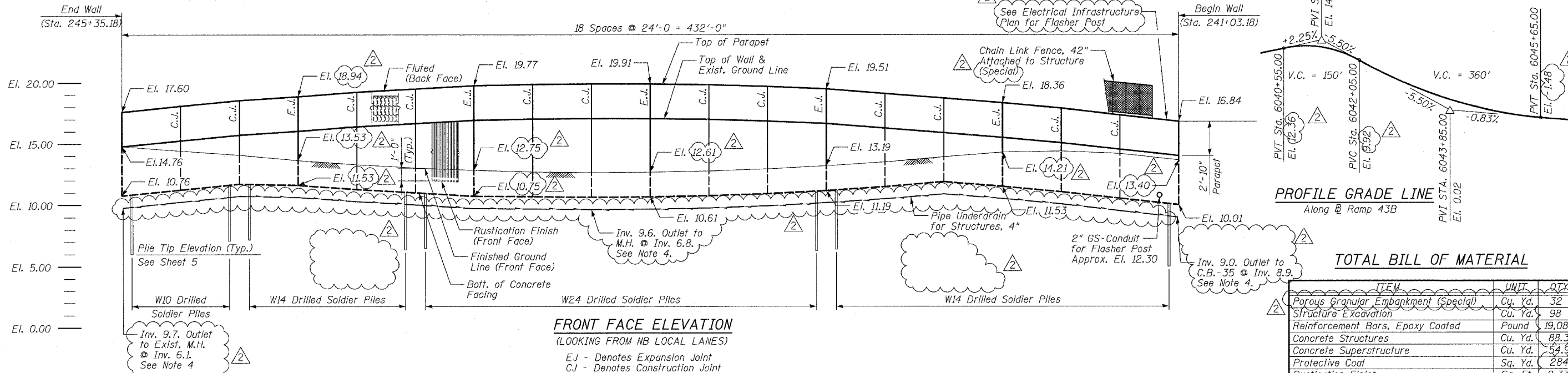
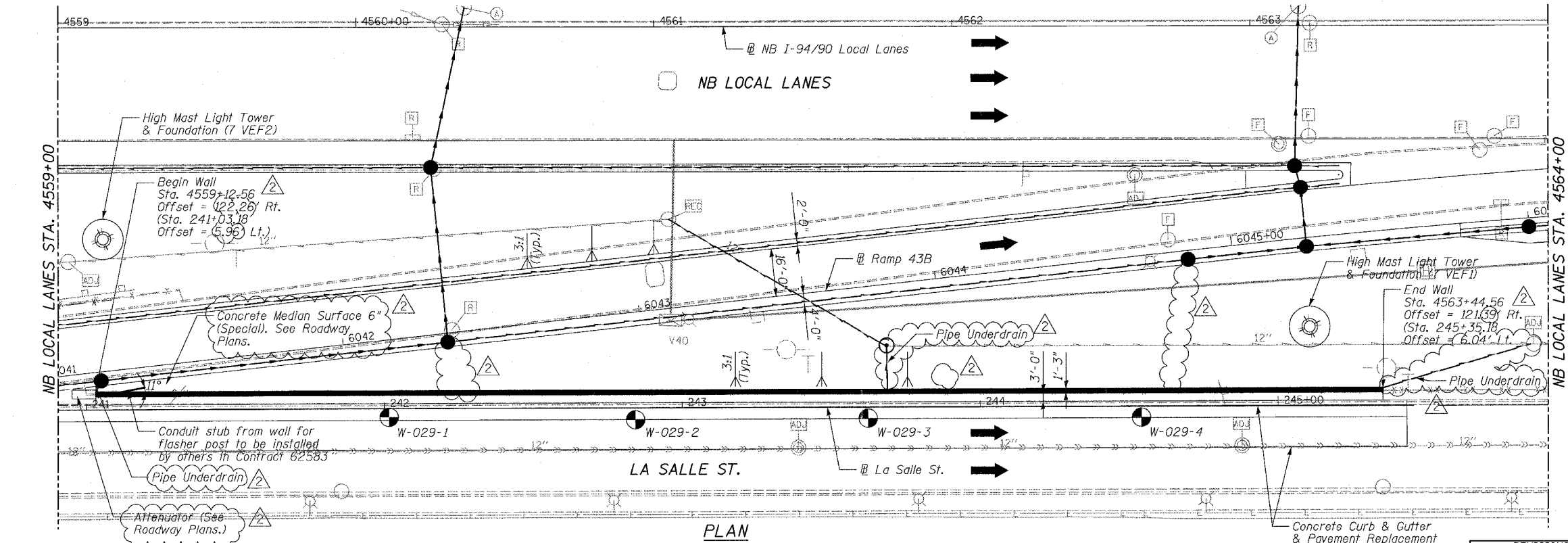


Benchmark: BM No. 3539
 "X" Cut on Easterly bolt of light pole
 base at the SE corner of 43rd St.
 and La Salle St.
 El. 13.10

All elevations are based on the Chicago City Datum (C.C.D.)



FRONT FACE ELEVATION
 (LOOKING FROM NB LOCAL LANES)
 EJ - Denotes Expansion Joint
 CJ - Denotes Construction Joint



PLAN

DESIGN SPECIFICATIONS
 2002 AASHTO

DESIGN STRESSES

FIELD UNITS
 $f'_c = 3,500$ psi
 $f_y = 60,000$ psi (Reinforcement)
 $f_y = 36,000$ psi (M270 Gr 36) Soldier Piles

- Notes:
- Offsets given to Front Face of Wall. Station and offsets in parentheses are along Frontage Road or ramp.
 - H.M.L.T., foundations and work pads by others. See Special Provisions for Contractor Cooperation.
 - Min. Facing in contact with soldier pile shall be 3'-0".

- Coordinate pipe underdrain outlet with Drainage Contractor. Outlets shall slope at 1% min. See Drainage Plans. Cost included with Pipe Underdrains for Structures, 4".
- Reference Top View of Detail for installing conduit sleeves in foundation in retaining wall on sheet SDB. One conduit with 24" radius elbow. Cost included with Concrete Superstructures.

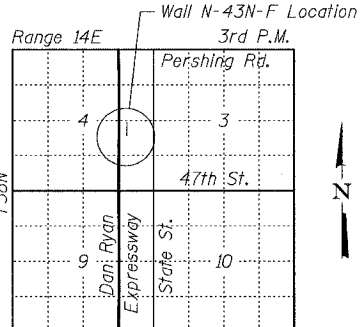
F.A.I.	SECTION	COUNTY	TOTAL SHEETS	SHEET NO.
94/90		COOK	565	397
STA.	TO STA.			
FED. ROAD DIST. NO.	ILLINOIS FED. AID PROJECT			
62301	*(2021-922 PT2 ETC 2324.6-1P) R-10			

TOTAL BILL OF MATERIAL

ITEM	UNIT	QTY
Porous Granular Embankment (Special)	Cu. Yd.	32
Structure Excavation	Cu. Yd.	98
Reinforcement Bars, Epoxy Coated	Pound	19,080
Concrete Structures	Cu. Yd.	88.3
Concrete Superstructure	Cu. Yd.	54.9
Protective Coat	Sq. Yd.	284
Rustication Finish	Sq. Ft.	2,371
Stud Shear Connector	Each	430
Untreated Timber Lagging	Sq. Ft.	1,776
Furnishing Soldier Piles (W Section)	Foot	2,315
Drilling and Setting Soldier Piles (In Soil)	Cu. Ft.	6,293
Geocomposite Wall Drain	Sq. Yd.	147
Pipe Underdrains for Structures, 4"	Foot	495
Chain Link Fence, 42" Attached to Structure (Special)	Foot	424

LEGEND

- Soil Boring Location
- High Mast Lighting Foundation and Tower (See Notes)
- Proposed Drainage Structure
- Proposed Underdrain
- Proposed Storm Sewer



LOCATION SKETCH
 SHEET 1 OF 9

REVISIONS	
NAME	DATE
REVISED	06/15/06
ADDENDUM 2	8/04/06

ILLINOIS DEPARTMENT OF TRANSPORTATION
 F.A.I. 94/90 (DAN RYAN EXPRESSWAY)
 GARFIELD BLVD TO 31ST STREET (NB LOCAL LANES)

RETAINING WALL N-43N-F
 GENERAL PLAN AND ELEVATION

SCALE: NTS
 DATE: JUNE 9, 2006
 DRAWN BY: LAM
 CHECKED BY: BLU

BOWMAN, BARRETT & ASSOCIATES INC.
 CONSULTING ENGINEERS
 Chicago, Illinois
 312.228.0100
 www.bbainc.com