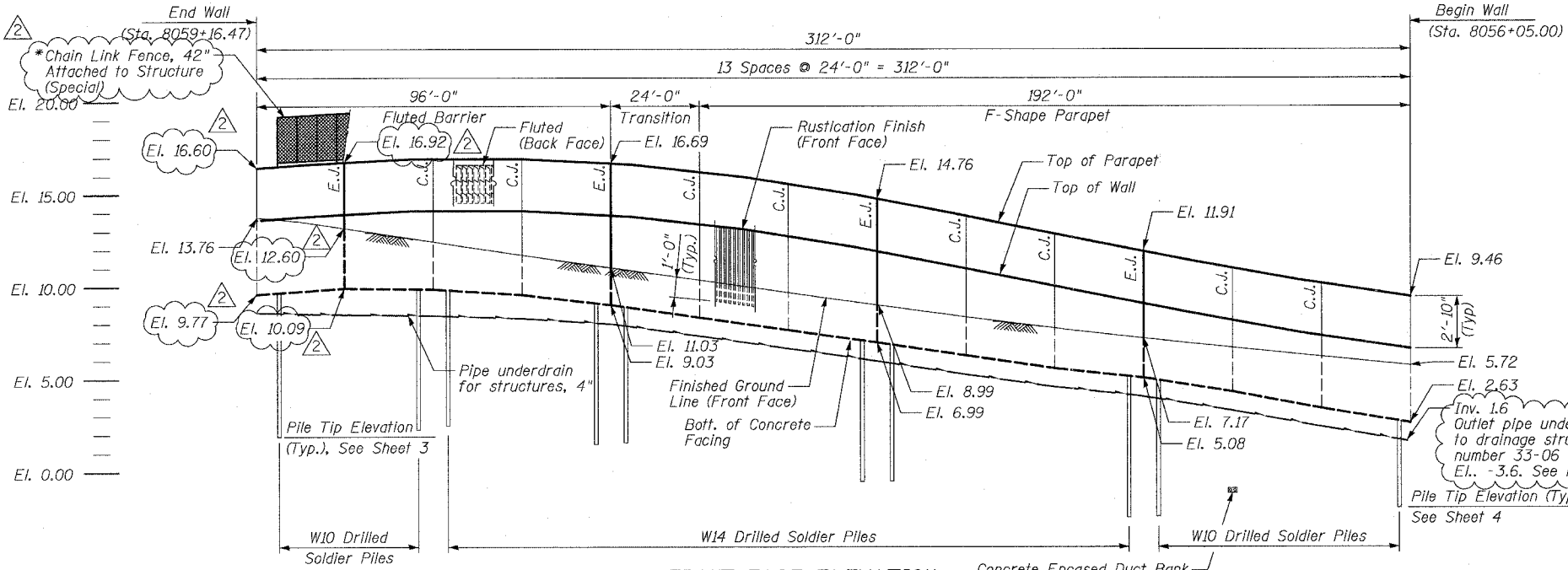
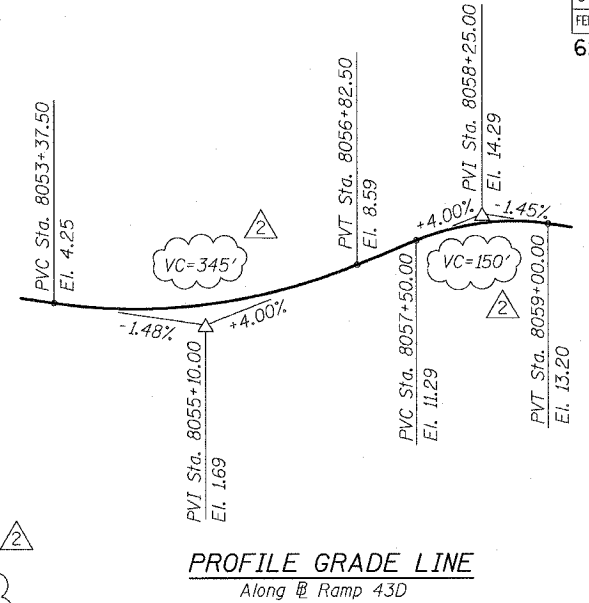


F.A.I.	SECTION	COUNTY	TOTAL SHEETS	SHEET NO.
94/90	*	COOK	565	406
STA.	TO STA.			
FED. ROAD DIST. NO.	ILLINOIS	FED. AID PROJECT		
62301	*I2021-922 PT2 ETC 2324.6-1P1 R-10			

Benchmark: BM No. 3539
 "X" Cut on Easterly bolt of light pole
 base at the SE corner of 43rd St.
 and La Salle St.
 El. 13.10
 All elevations are based on the Chicago City Datum (C.C.D.)



FRONT FACE ELEVATION
 (LOOKING FROM NB LOCAL LANES)
 E.J. - Denotes Expansion Joint
 C.J. - Denotes Construction Joint
 * - On Fluted Barrier only



PROFILE GRADE LINE
 Along Ramp 43D

TOTAL BILL OF MATERIAL

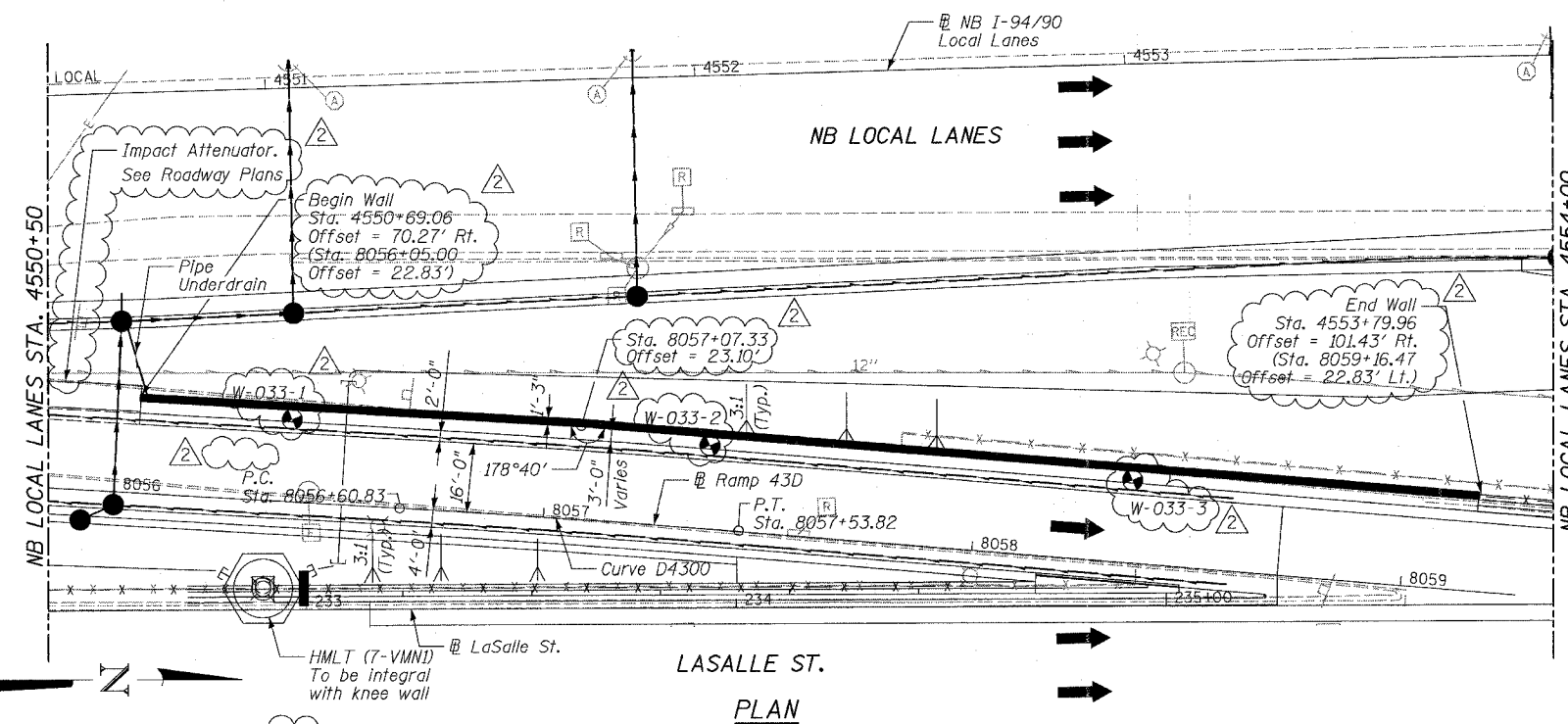
ITEM	UNIT	QTY.
Structure Excavation	Cu. Yd.	70
Reinforcement Bars, Epoxy Coated	Pound	13,280
Concrete Structures	Cu. Yd.	55.2
Concrete Superstructure	Cu. Yd.	31.7
Protective Coat	Sq. Yd.	172
Rustication Finish	Sq. Ft.	1136
Stud Shear Connector	Each	270
Untreated Timber Laggings	Sq. Ft.	1064
Furnishing Soldier Piles (W Section)	Foot	874
Drilling & Setting Soldier Piles (In Soil)	Cu. Ft.	2,452
Geocomposite Wall Drain	Sq. Yd.	89
Pipe Underdrains for Structures, 4"	Foot	335
Chain Link Fence, 42", Attached to Structure (Special)	Foot	95
Porous Granular Embankment (Special)	Cu. Yd.	102

DESIGN SPECIFICATIONS

2002 AASHTO
DESIGN STRESSES
FIELD UNITS
 $f'_c = 3,500$ psi
 $f_y = 60,000$ psi (Reinforcement)
 $f_y = 36,000$ psi (M270 Gr 36) Soldier Piles

PROP. CURVE D4300

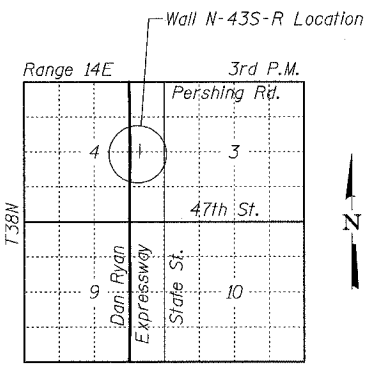
P.I. Sta. = 8057+07.33
 $\Delta = 1^\circ 19' 55''$ (RT)
 $D = 1^\circ 25' 57''$
 $R = 4,000.00'$
 $T = 46.49'$
 $L = 92.99'$



PLAN

LEGEND

- Soil Boring Location
- High Mast Lighting Foundation and Tower (See Notes)
- Proposed Drainage Structure
- Proposed Underdrain
- Proposed Storm Sewer



LOCATION SKETCH

SHEET 1 OF 9

ILLINOIS DEPARTMENT OF TRANSPORTATION
 F.A.I. 94/90 (DAN RYAN EXPRESSWAY)
 GARFIELD BLVD TO 31ST STREET (NB LOCAL LANES)

**RETAINING WALL N-43S-R
 GENERAL PLAN AND ELEVATION**

SCALE: NTS
 DATE: JUNE 9, 2006
 DRAWN BY: MTR
 CHECKED BY: BLU

REVISIONS	
NAME	DATE
REVISED	06/16/06
ADDENDUM 2	8/04/06

BOWMAN, BARRETT & ASSOCIATES INC.
 CONSULTING ENGINEERS
 Chicago, Illinois
 312.228.0100
 www.bbandainc.com

- Notes:
- Offsets given to Front Face of Wall. Station and offsets in parentheses are along Frontage Road or ramp.
 - Min. Facing in contact with soldier pile shall be 3'-0".
 - Coordinate pipe underdrain outlet with Drainage Contractor. Outlets shall slope at 1% min. See Drainage Plans. Cost included with Pipe Underdrains for Structures, 4".