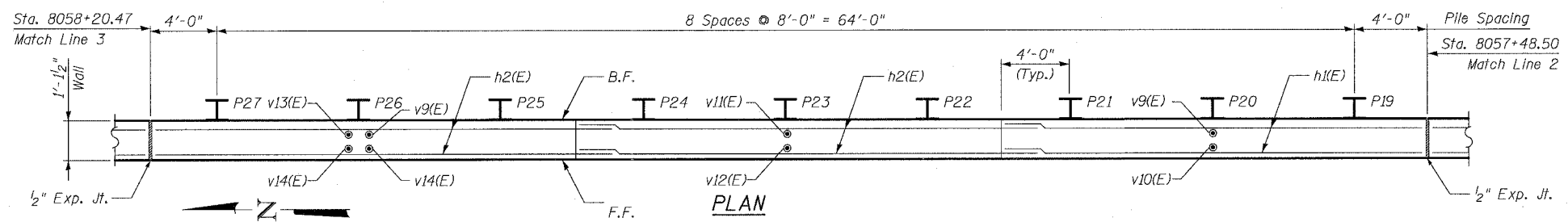
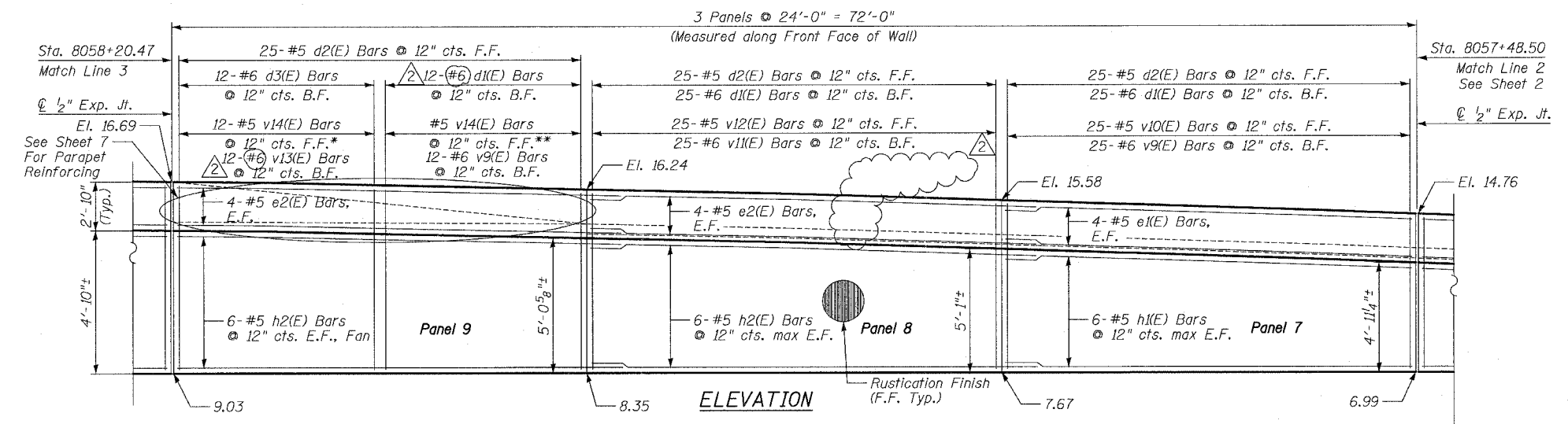


| | | | | |
|--------|-------------------------------------|--------|--------------|-----------|
| F.A.I. | SECTION | COUNTY | TOTAL SHEETS | SHEET NO. |
| 94/90 | * | COOK | 565 | 408 |
| STA. | TO STA. | | | |
| 62301 | * (2021-922 PT2 ETC 2324.6-1P) R-10 | | | |



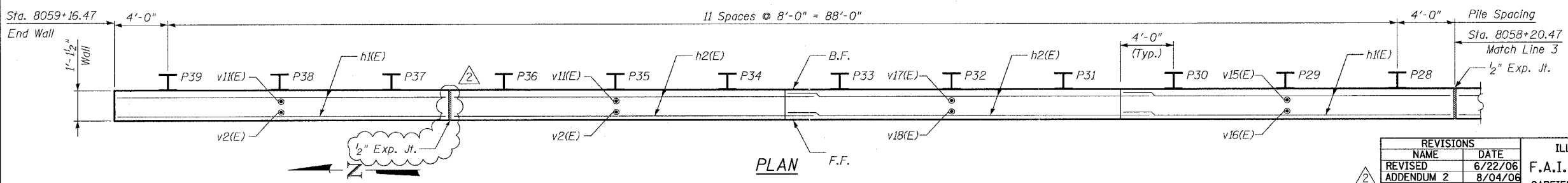
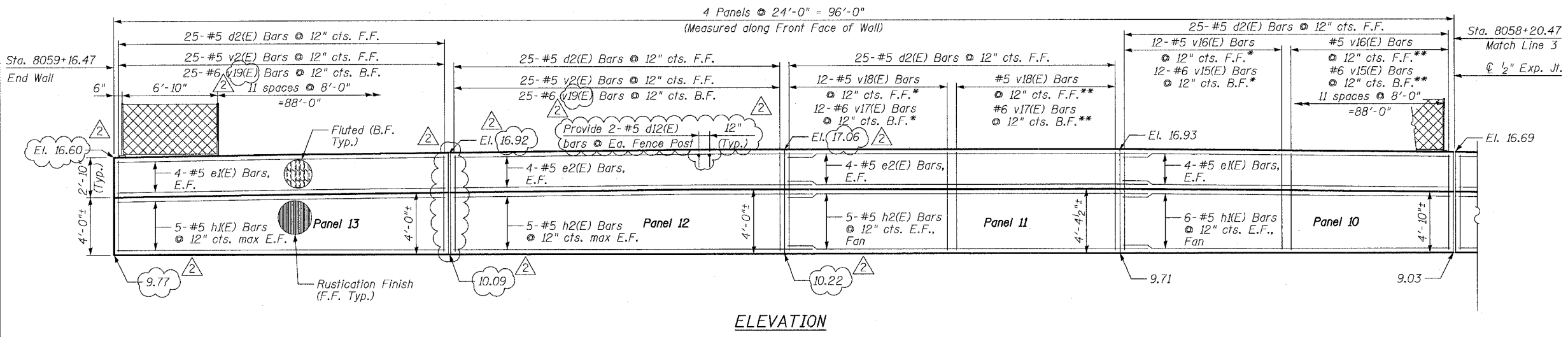
- Notes:
1. Stationing given is @ Ramp 43D.
 2. Facing in Plan Views is scaled 1:2 on an X:Y scale to show reinforcement.
 3. See details for reinforcing bar clearances.

* Order bars full length, cut as indicated in cutting diagram, then bend as shown in bar bend details if required.

** Remaining Bars from Cutting Diagram

F.F. - denotes Front Face
 B.F. - denotes Back Face
 E.F. - denotes Each Face

Min Bar Lap
 #5- 2'-2"
 #6- 2'-7"



SHEET 3 OF 9

ILLINOIS DEPARTMENT OF TRANSPORTATION
 F.A.I. 94/90 (DAN RYAN EXPRESSWAY)
 GARFIELD BLVD TO 31ST STREET (NB LOCAL LANES)
 RETAINING WALL N-43S-R
 WALL DETAILS 2

| REVISIONS | |
|------------|---------|
| NAME | DATE |
| REVISOR | 6/22/06 |
| ADDENDUM 2 | 8/04/06 |
| | |
| | |
| | |
| | |

SCALE: NTS
 DATE: JUNE 9, 2006
 DRAWN BY: LAM
 CHECKED BY: BLU

BOWMAN, BARRETT & ASSOCIATES INC.
 CONSULTING ENGINEERS
 Chicago, Illinois
 312.228.0100
 www.bbainc.com

10/25/2006 10:55:27 AM