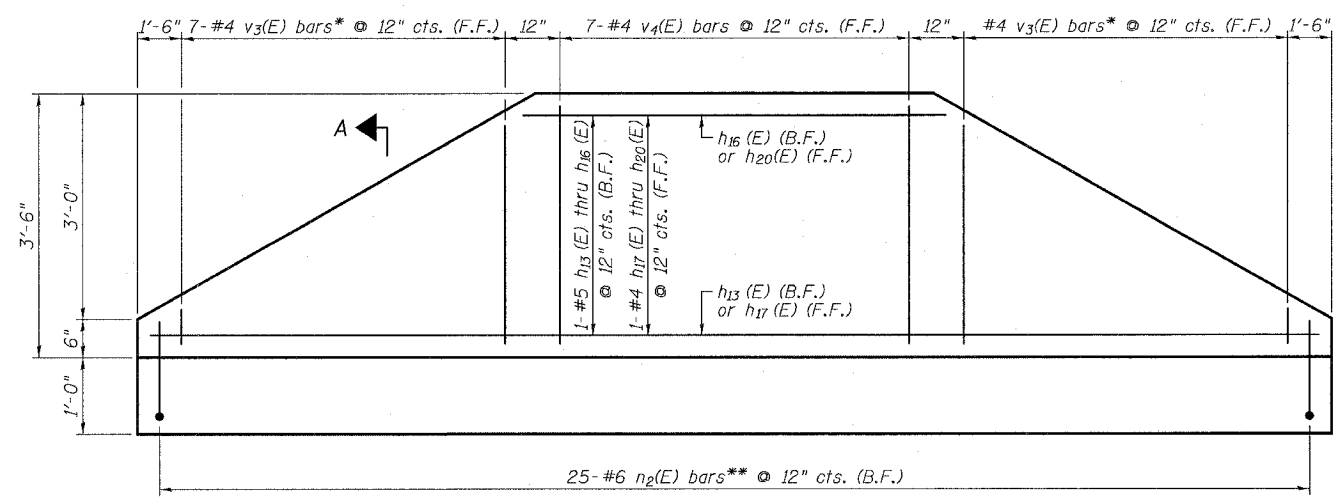
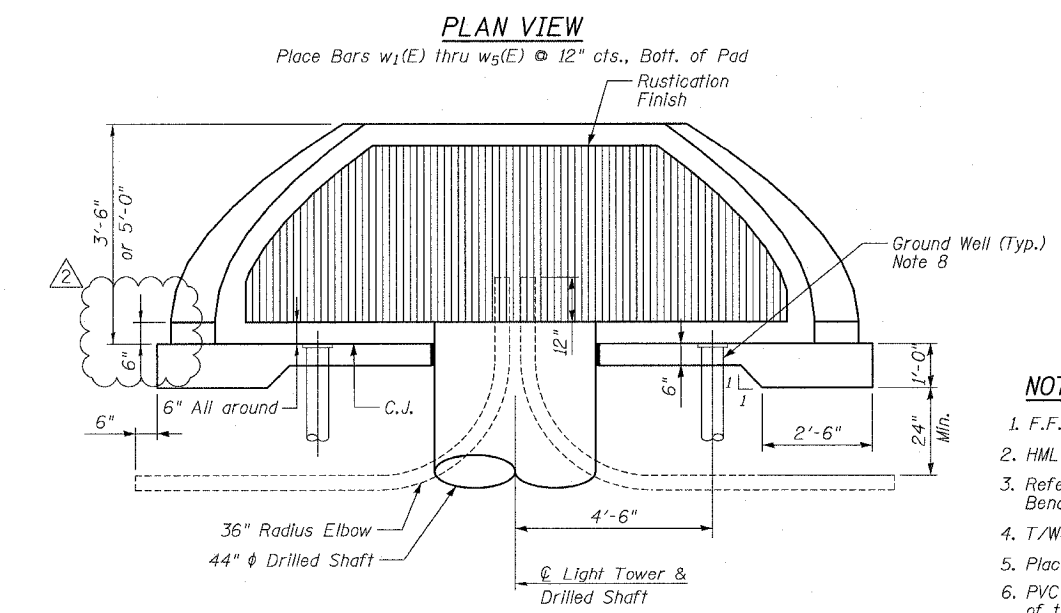
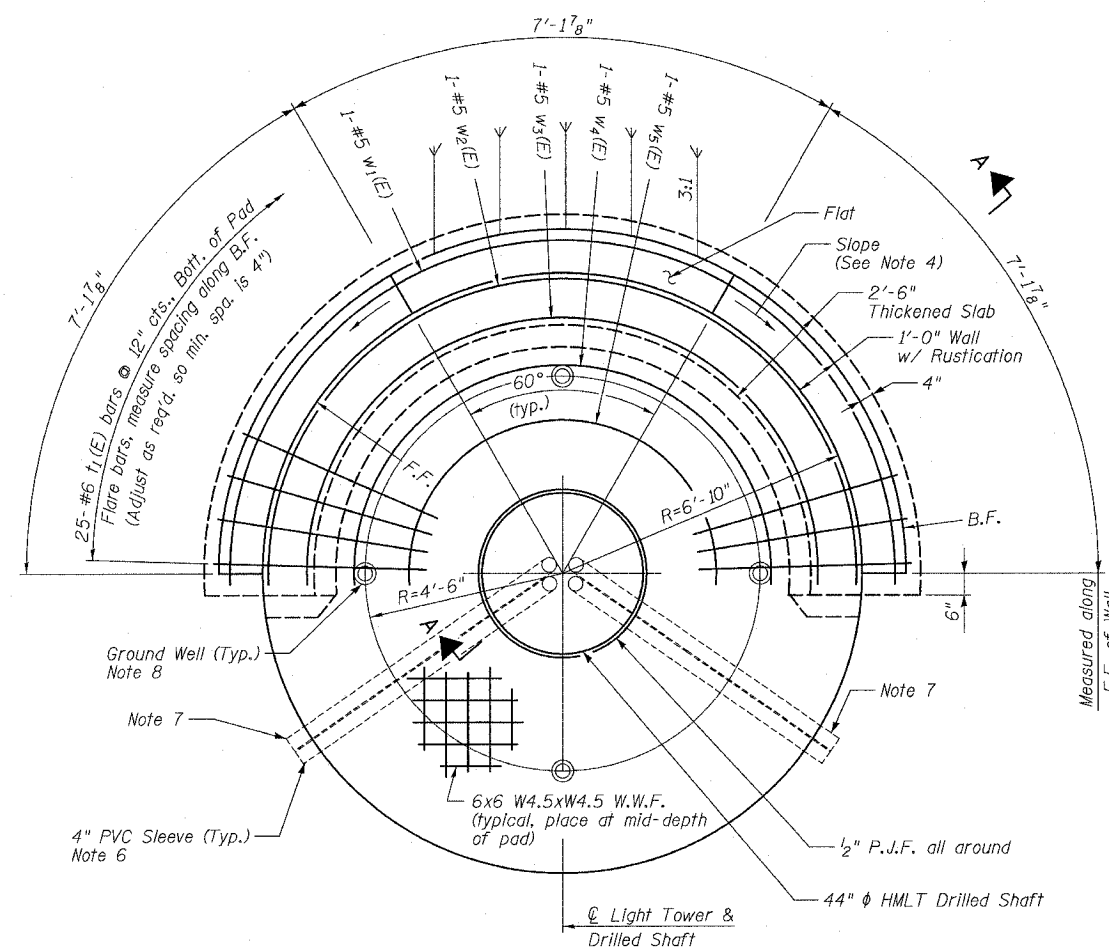


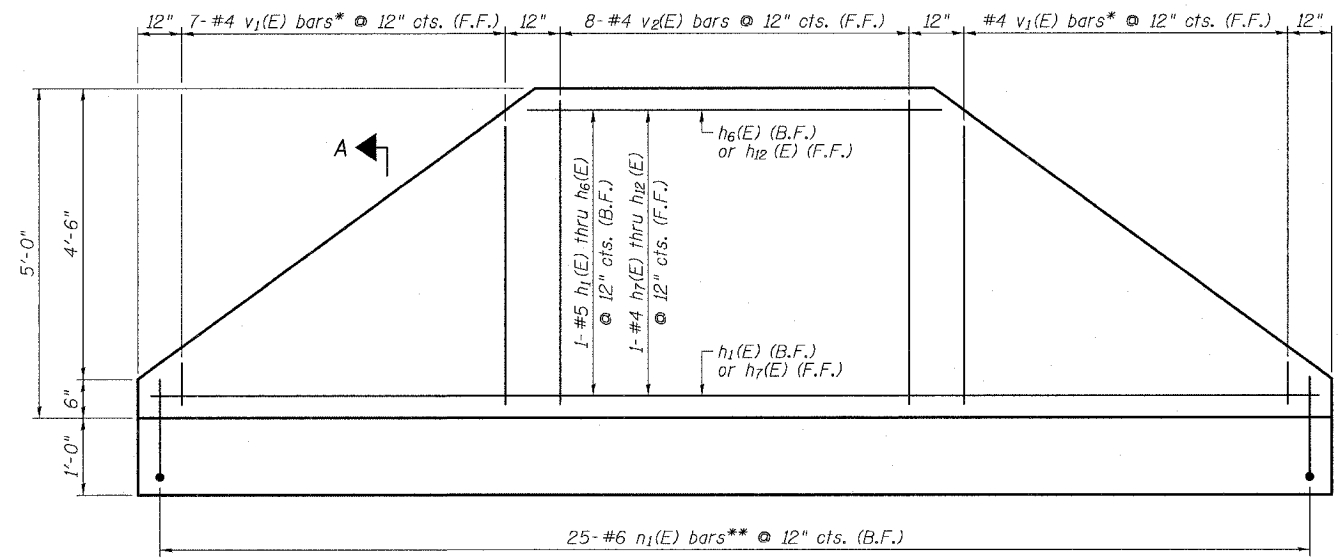
F.A.I.	SECTION	COUNTY	TOTAL SHEETS	SHEET NO.
94/90	*	COOK	565	420
STA.	TO STA.			
FED. ROAD DIST. NO.	ILLINOIS	FED. AID PROJECT		
62301	*(2021-922 PT2 ETC 2324.6-1P1 R-10			

N:\62301\94\90\RETAINING WALLS\SD6_ISS\HDET.dwg



* Cut to fit, use remainder of bars at opposite end of wall. See Cutting Diagram, Sheet SD7.
 ** Cut to fit where necessary, discard excess.

3'-6" RETAINING WALL ELEVATION (PROJECTED)
 (Looking at F.F.)



* Cut to fit, use remainder of bars at opposite end of wall. See Cutting Diagram, Sheet SD7.
 ** Cut to fit where necessary, discard excess.

5'-0" RETAINING WALL ELEVATION (PROJECTED)
 (Looking at F.F.)

- NOTES**
1. F.F. and B.F. denote Front Face and Back Face, respectively.
 2. HMLT denotes High Mast Light Tower.
 3. Refer to HMLT Service Pad & Retaining Wall Details 2 for Bar Bending Diagrams, Bill of Material, Bar Sections and Details.
 4. T/Wall slope is constant along the arc of any given radius.
 5. Place horizontal tails of n₁(E) & n₂(E) bars radially.
 6. PVC sleeves must be extended 6 inches beyond the edge of the concrete pad.
 7. PVC sleeve for CCTV camera power feed (future). Sleeve must be capped unless noted otherwise on the plans.
 8. Install ground wells 4'-6" as measured from centerline of the HMLT to centerline of the well. Adjust service pad reinforcement to miss wells. If existing ground wells present, adjust and incorporate into service pad as directed by the Engineer. Cost included with Light Tower Service Pad, 6" or Light Tower Service Pad, Special as appropriate.

SHEET SD6 OF SD11

REVISIONS	
NAME	DATE
ADDENDUM 2	8/04/06

ILLINOIS DEPARTMENT OF TRANSPORTATION
 F.A.I. 94/90 (DAN RYAN EXPRESSWAY)
 GARFIELD BLVD TO 31ST STREET (NB LOCAL LANES)
 HIGH MAST LIGHT TOWER SERVICE PAD
 & RETAINING WALL DETAILS 1

SCALE: NTS
 DATE: JUNE 9, 2006

DRAWN BY: MTR
 CHECKED BY: BLU

BOWMAN, BARRETT & ASSOCIATES INC.
 CONSULTING ENGINEERS
 Chicago, Illinois
 312.228.0100
 www.bbandainc.com

8/11/2006 12:58:18 PM