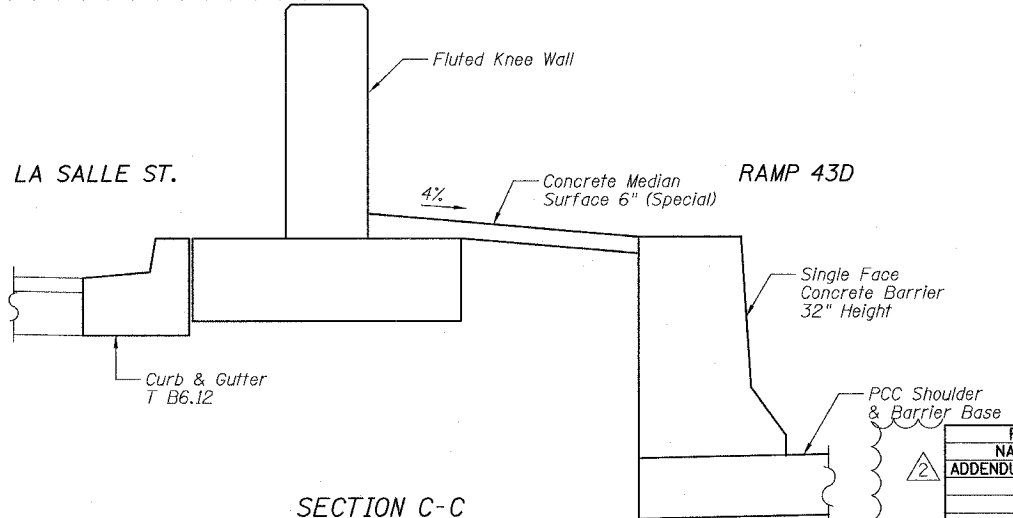
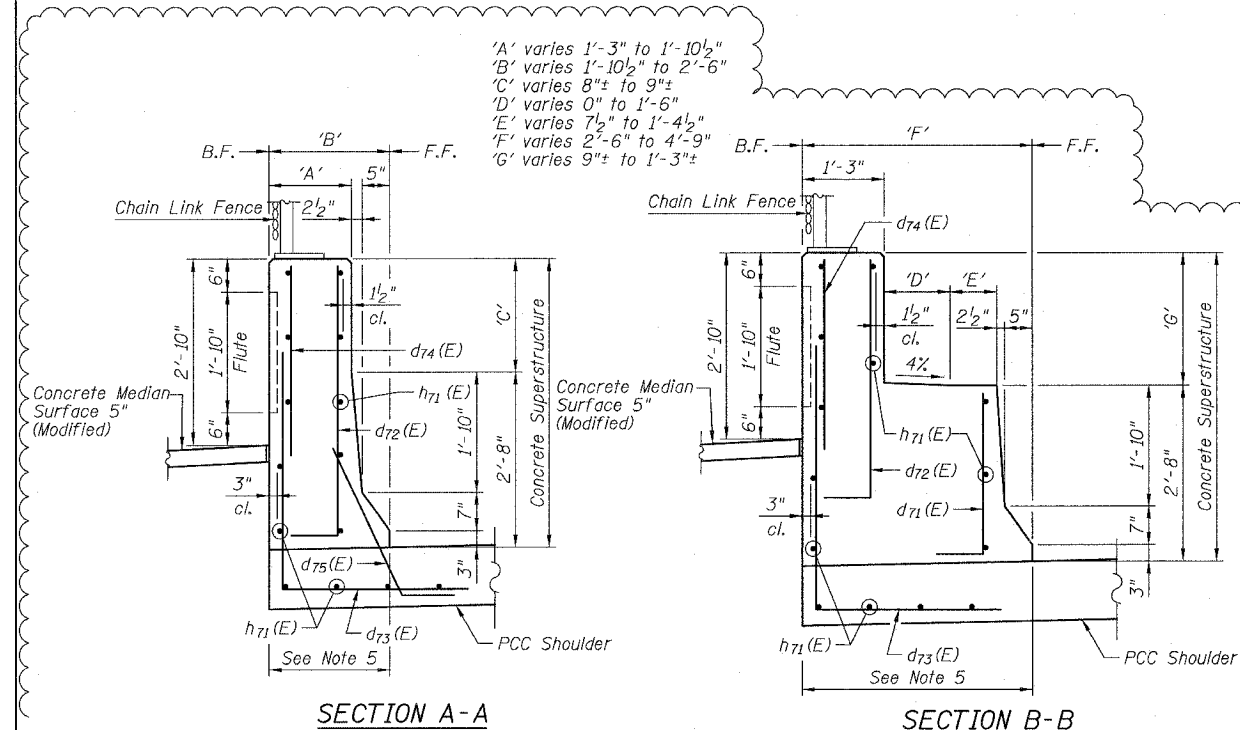
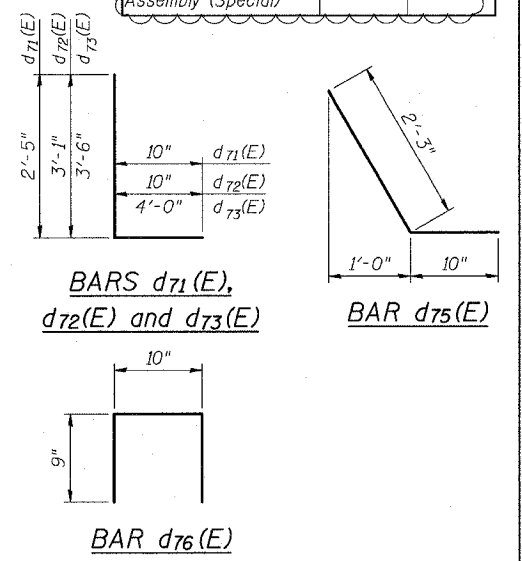
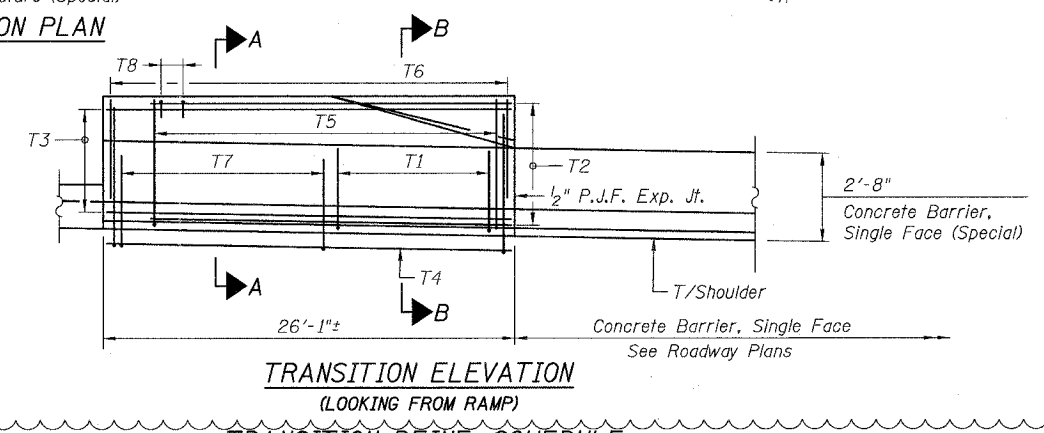
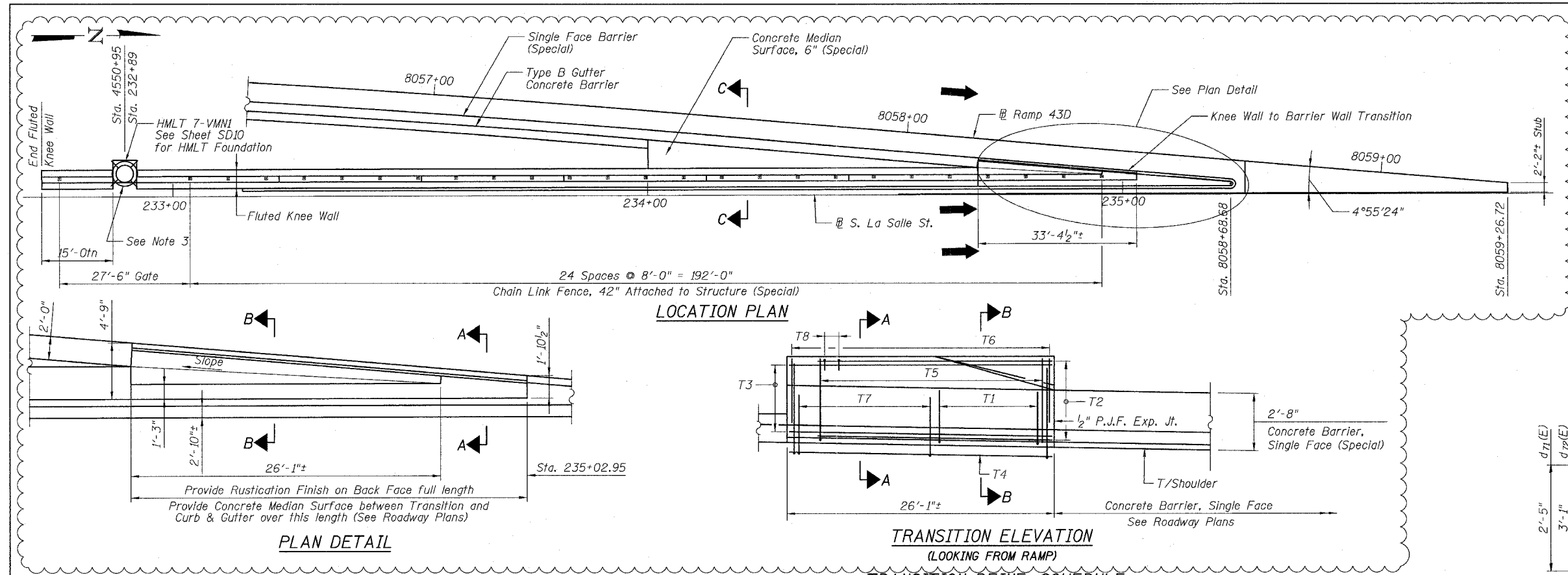


F.A.I.	SECTION	COUNTY	TOTAL SHEETS	SHEET NO.
94/90	*	COOK	565	425
STA.	TO STA.			
FED. ROAD DIST. NO.	ILLINOIS	FED. AID PROJECT		
62301	*(2021-922 PT2 ETC 2324.6-1P) R-10			

**BILL OF MATERIAL**

Bar	No.	Size	Length	Shape
d71(E)	27	#5	3'-3"	U
d72(E)	34	#5	3'-11"	U
d73(E)	34	#6	7'-6"	U
d74(E)	34	#6	2'-11"	U
d75(E)	8	#5	3'-4"	U
d76(E)	8	#5	2'-4"	U
d77(E)	14	#4	33'-0"	U
Concrete Superstructure		Cu. Yd.	10.8	
Reinforcement Bars, Epoxy Coated		Pound	1,120	
Protective Coat		Sq. Yd.	34	
Rustication Finish		Sq. Ft.	70	
Fluted Knee Wall		Foot	193	
Chain Link Fence, 42" Attached to Structure (Special)		Foot	192	
Chain Link Gate Assembly (Special)		Each	1	



- NOTES**
- F.F. and B.F. denote Front Face and Back Face of Transition, respectively.
  - See Roadway Plans for details of items not shown here.
  - Provide Concrete Median Surface 5" (Modified) between Fluted Knee Wall, curb and gutter and HMLT Foundation.
  - Knee Wall/Barrier Transition shall be paid as "Concrete Superstructure", "Reinforcement Bars, Epoxy Coated", "Rustication Finish" and "Protective Coat".
  - Portion of Ramp Shoulder under transition shall be paid for as Barrier Base. All reinforcement required for transition will be paid for as Reinforcement Bars, Epoxy Coated.

BOWMAN, BARRETT & ASSOCIATES INC.  
CONSULTING ENGINEERS  
Chicago, Illinois  
312.228.0100  
www.bbainc.com

**REVISIONS**

NAME	DATE
ADDENDUM 2	8/04/06

SHEET SD11 OF SD11  
ILLINOIS DEPARTMENT OF TRANSPORTATION  
F.A.I. 94/90 (DAN RYAN EXPRESSWAY)  
GARFIELD BLVD TO 31ST STREET (NB LOCAL LANES)  
KNEE WALL/BARRIER TRANSITION  
AT RAMP 43D  
SCALE: NTS  
DATE: JUNE 9, 2006  
DRAWN BY: KMW  
CHECKED BY: BLU

Adjust Concrete Median Surface 6" (Special) grades as required to meet field conditions and to ensure proper drainage. Separate concrete surfaces, as required with bond breaker as directed by the Engineer.