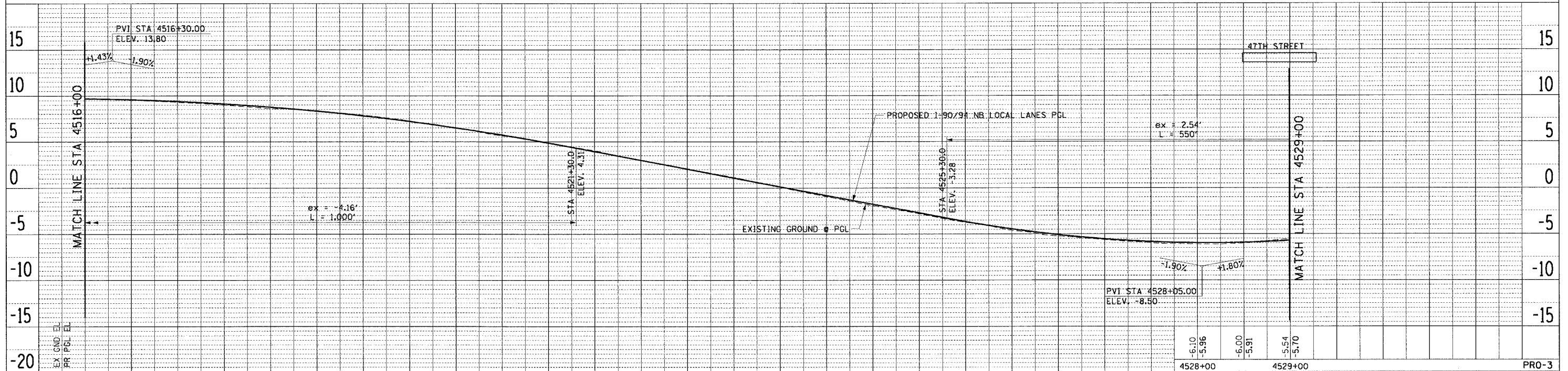
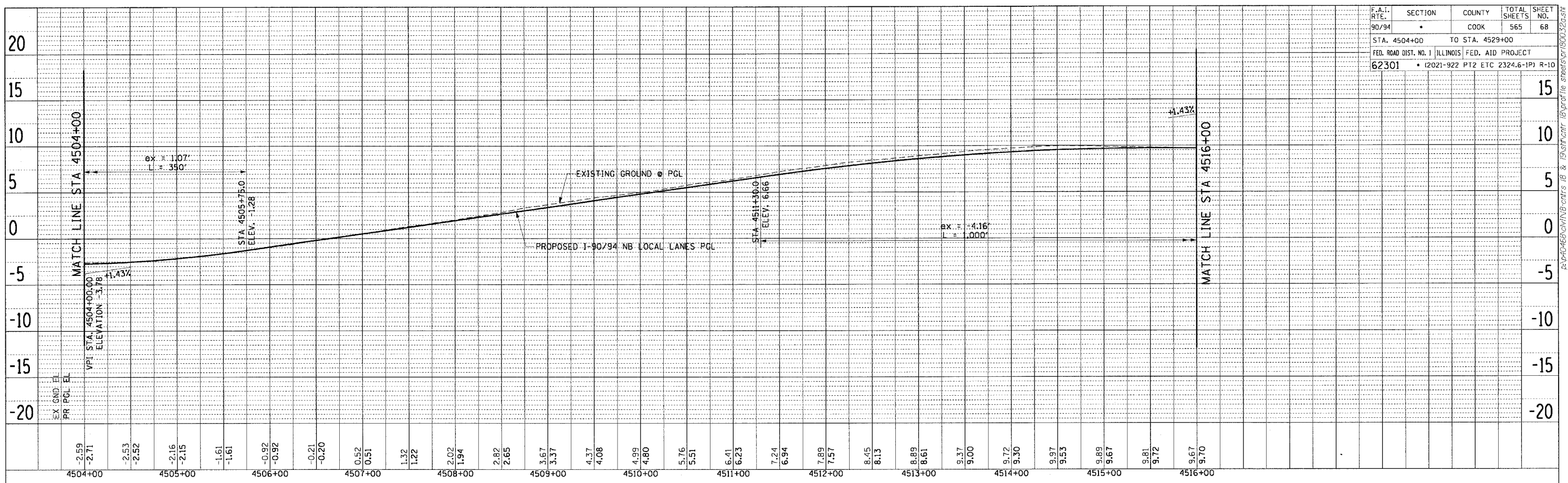


F.A.I. RTE.	SECTION	COUNTY	TOTAL SHEETS	SHEET NO.
90/94	*	COOK	565	68
STA. 4504+00		TO STA. 4529+00		
FED. ROAD DIST. NO. 1		ILLINOIS FED. AID PROJECT		
62301		(2021-922 PT2 ETC 2324.6-1P) R-10		

PLAN	DATE	BY
DATE		
BY		
DATE		
BY		
DATE		

PLAN	DATE	BY
DATE		
BY		
DATE		
BY		
DATE		



CTE AECOM

REVISIONS	
NAME	DATE

ILLINOIS DEPARTMENT OF TRANSPORTATION
F.A.I. 90/94 (DAN RYAN EXPRESSWAY)
GARFIELD BLVD TO 31ST STREET (NB LOCAL LANES)

PROPOSED PROFILES
NORTHBOUND LOCAL LANES

SCALE: H: 1"=50' V: 1"=5'
DATE: June 9, 2006
DRAWN BY: PHP
CHECKED BY: NJH

6/7/2006 14:22 PM