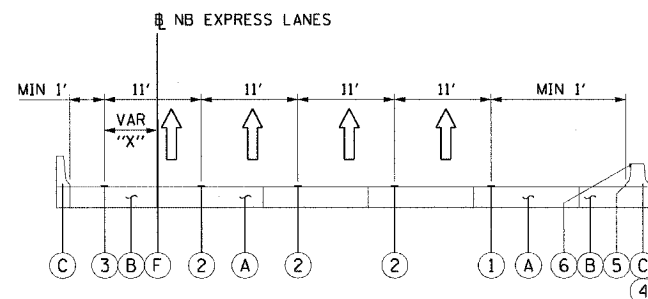
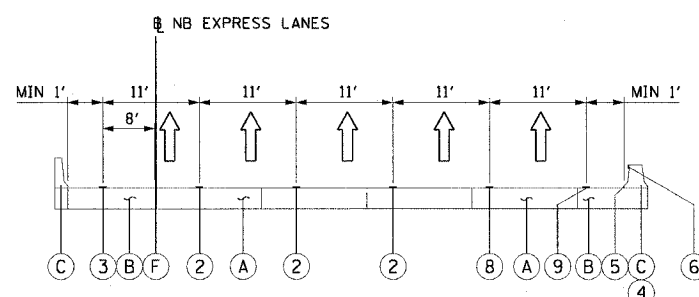


F.A.I. RTE.	SECTION	COUNTY	TOTAL SHEETS	SHEET NO.
90/94		COOK	565	81
STA.	TO STA.			
FED. ROAD DIST. NO. 1	ILLINOIS	FED. AID PROJECT		
62301	• (2021-922 PT2 ETC 2324.6-1P) R-10			

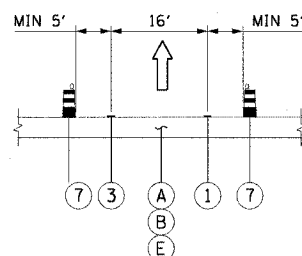


SECTION B-B STATION 2474+50.00 TO 2529+20.15

"X"	STATION RANGE
9'-4"	2474+51.44 TO 2476+00
4'	2476+00 TO 2484+00
4'-8"	2484+00 TO 2486+00
8'	2486+00 TO 2523+50
8'-5"	2523+50 TO 2525+00
5'	2525+00 TO 2529+20.15



SECTION D-D STATION 2492+81.62 TO 2499+04.16 (STAGE 1)  
 SECTION D-D STATION 2492+81.62 TO 2503+05.56 (STAGE 2)  
 SECTION D-D STATION 2496+65 TO 2503+05.56 (STAGE 3)



SECTION C-C  
 RAMP SECTIONS

55TH STREET ENTRANCE RAMP  
 47TH STREET EXIT RAMP

- ① PAVEMENT MARKING - LINE 4" (WHITE)
- ② PAVEMENT MARKING - LINE 5" (WHITE SKIP DASH)
- ③ PAVEMENT MARKING - LINE 4" (YELLOW)
- ④ RELOCATE TEMPORARY CONCRETE BARRIER
- ⑤ TEMPORARY PAVEMENT MARKING - LINE 6"
- ⑥ MONODIRECTIONAL PRISMATIC BARRIER REFLECTOR
- ⑦ DRUM OR BARRICADE TYPE II WITH STEADY BURN LIGHT
- ⑧ PAVEMENT MARKING - LINE 4" (WHITE SKIP DASH)
- ⑨ PAVEMENT MARKING - LINE 8" (WHITE)

- A PAVEMENT
- B SHOULDER
- C EXISTING BARRIER WALL
- D EXISTING TEMPORARY BARRIER WALL
- E TEMPORARY PAVEMENT
- F PAVEMENT-SHOULDER JOINT

NOTES:

1. TYPICAL SECTIONS NEED TO BE VERIFIED WITH THE TRAFFIC CONTROL PLANS WITH REGARDS TO TRAFFIC CONTROL CONDITIONS AND PAVEMENT MARKING SIZES.

REVISIONS		ILLINOIS DEPARTMENT OF TRANSPORTATION F.A.I. 90/94 (DAN RYAN EXPRESSWAY) GARFIELD BLVD TO 31ST STREET (NB LOCAL LANES)
NAME	DATE	
		SUGGESTED STAGES OF CONSTRUCTION AND TRAFFIC CONTROL TYPICAL SECTIONS

SCALE: NONE DRAWN BY: PHP  
 DATE: June 9, 2006 CHECKED BY: RMG

P:\p4688\ch\118\c\118.ctb 15:59 PM 6/7/2006